

1 **Mass incarceration as a driver of the tuberculosis epidemic in Latin America and projected**
2 **impacts of policy alternatives: A mathematical modeling study**

3
4 Yiran E Liu^{1,2}, Yasmine Mabene², Sergio Camelo³, Zulma Vanessa Rueda^{4,5}, Daniele Maria
5 Pelissari⁶, Fernanda Dockhorn Costa Johansen⁶, Moises A Huaman⁷, Tatiana Avalos-Cruz⁸,
6 Valentina A Alarcón⁸, Lawrence M Ladutke⁹, Ted Cohen¹⁰, Jeremy D Goldhaber-Fiebert^{11,12},
7 Julio Croda^{10,13,14}, Jason R Andrews²

8
9 ¹ Department of Epidemiology and Population Health, Stanford University, Stanford, California,
10 USA.

11 ² Division of Infectious Diseases and Geographic Medicine, Department of Medicine, Stanford
12 University, Stanford, California, USA.

13 ³ Institute for Computational and Mathematical Engineering, Stanford University, Stanford,
14 California, USA.

15 ⁴ Department of Medical Microbiology and Infectious Diseases, University of Manitoba,
16 Winnipeg, Canada.

17 ⁵ School of Medicine, Universidad Pontificia Bolivariana, Medellin, Colombia.

18 ⁶ National Tuberculosis Program, Ministry of Health, Brasília, Brazil.

19 ⁷ Division of Infectious Diseases, Department of Internal Medicine, University of Cincinnati
20 College of Medicine, Cincinnati, Ohio, USA.

21 ⁸ Dirección de Prevención y Control de la Tuberculosis, Ministerio de Salud, Lima, Perú.

22 ⁹ Amnesty International USA, New York, New York, USA.

23 ¹⁰ Department of Epidemiology of Microbial Diseases, School of Public Health, Yale University,
24 New Haven, Connecticut, USA.

25 ¹¹ Department of Health Policy, Stanford University, Stanford, California, USA.

26 ¹² Center for Health Policy, Freeman Spogli Institute, Stanford University, Stanford, California,
27 USA.

28 ¹³ Departamento de Clínica Médica, Universidade Federal de Mato Grosso do Sul, Campo
29 Grande, Brazil.

30 ¹⁴ Fiocruz Mato Grosso do Sul, Campo Grande, Brazil.

31
32 **Manuscript Word Count: 3750**

33 **Abstract Word Count: 250**

34 **Tables: 2**

35 **Figures: 4**

36 **References: 31**

37
38 **Correspondence:**

39 Yiran E Liu

40 Stanford University School of Medicine

41 Department of Epidemiology and Population Health

42 300 Pasteur Drive

43 Stanford, California 94305

44 Email: yiranliu@stanford.edu

45

46 **ABSTRACT (250 words)**

47

48 **Background**

49 Tuberculosis incidence is increasing in Latin America, where the incarcerated population has
50 nearly quadrupled since 1990. The full impact of incarceration on the tuberculosis epidemic,
51 accounting for effects beyond prisons, has never been quantified.

52

53 **Methods**

54 We calibrated dynamic compartmental transmission models to historical and contemporary data
55 on incarceration and tuberculosis in Argentina, Brazil, Colombia, El Salvador, Mexico, and Peru.
56 Together these countries comprise approximately 80% of the region's incarcerated population
57 and tuberculosis burden. Using historical counterfactual scenarios, we estimated the transmission
58 population attributable fraction (tPAF) for incarceration and the excess population-level burden
59 attributable to increasing incarceration prevalence since 1990. We additionally projected the
60 impact of various incarceration scenarios on future population tuberculosis incidence.

61

62 **Findings**

63 The rise in incarceration prevalence since 1990 has resulted in an estimated 30,241 (95% UI,
64 24,333 - 39,303) excess incident tuberculosis cases in 2019 across the six countries. The tPAF for
65 incarceration in 2019 was 23.5% (95% UI, 17.7-32.0), exceeding estimates for other key risk
66 factors like HIV, alcohol use disorders, and undernutrition. Compared to a base-case scenario
67 where current incarceration policies persist, decarceration interventions could reduce future
68 population tuberculosis incidence in all countries, notably by over 10% in Brazil, Colombia, El
69 Salvador, and Peru.

70

71 **Interpretation**

72 The historical rise in incarceration in Latin America has resulted in a large excess burden of
73 tuberculosis that has been under-recognized to-date. International health agencies, ministries of
74 justice, and national tuberculosis programs should collaborate to address this health crisis with
75 comprehensive strategies, including decarceration.

76

77 **Funding**

78 National Institutes of Health

79

80 **Research in context**

81

82 **Evidence before this study**

83 We searched PubMed for studies on tuberculosis in prisons in Latin America, using the search
84 terms (“tuberculosis”) AND (“prisons” OR “incarceration”) AND (“Latin America” OR
85 “Argentina” OR “Brazil” OR “Colombia” OR “El Salvador” OR “Mexico” OR “Peru”),
86 published in any language. Previous studies have identified a high risk of tuberculosis in prisons
87 in Latin America, finding that notifications in prisons are increasing and account for a growing
88 proportion of all cases in the region. Other national or sub-national studies have found elevated
89 tuberculosis risk among formerly incarcerated individuals and transmission chains spanning
90 prisons and communities. However, the full contribution of incarceration to the broader
91 tuberculosis epidemic in Latin America—accounting for historical incarceration trends, under-
92 detection in prisons, and “spillover” effects into communities—has never been quantified.
93 Furthermore, previous studies have evaluated biomedical interventions in prisons; the regional
94 impact of alternative incarceration policies on future population tuberculosis incidence is
95 unknown.

96

97 **Added value of this study**

98 Here we quantify the full contribution of incarceration to the tuberculosis epidemic in Latin
99 America. Our model captures the dynamic nature of incarceration, incorporating historical and
100 contemporary data sources to account for varying prison turnover rates and mechanisms
101 underlying historical incarceration growth. By modeling the population with incarceration
102 history, we estimate the true size of the ever-exposed population, which across the six countries
103 is nearly 14 times the size of the population within prison at any one time. We identify the
104 settings where excess cases occur and compare our results to crude estimates based on
105 notifications in prisons. We show, across six countries with diverse carceral contexts and
106 tuberculosis epidemiology, that incarceration is a leading driver on par with other major
107 tuberculosis risk factors, a role that has been under-recognized to date. Finally, we demonstrate
108 the potential impact of alternative incarceration policies in reducing future tuberculosis burden in
109 carceral settings and the general population.

110

111 **Implications of all the available evidence**

112 To date the true impact of incarceration on the tuberculosis epidemic across the region has been
113 underestimated due to a narrow focus on disease occurring during incarceration. In light of the
114 substantial excess tuberculosis burden attributable to incarceration, interventions targeting
115 incarceration can have outsized effects on the broader tuberculosis epidemic in Latin America—
116 much greater than previously appreciated. These interventions should include not only strategies
117 to reduce tuberculosis risk among currently and formerly incarcerated individuals, but also
118 efforts to end mass incarceration.

119 **INTRODUCTION**

120 Globally, 10.6 million people developed tuberculosis in 2022¹. While global tuberculosis
121 incidence has decreased by 8.7% since 2015, in Latin America, tuberculosis incidence increased
122 by 19% over the same period, highlighting the urgent need to address key tuberculosis drivers in
123 the region.

124
125 In Latin America, the incarcerated population has nearly quadrupled over the last thirty years².
126 Persons deprived of liberty (PDL), who may already face elevated risk of tuberculosis prior to
127 incarceration, are further exposed to prison conditions that foster transmission and disease
128 progression, including overcrowding, poor ventilation, malnourishment, and limited access to
129 health care³. Together these factors contribute to tuberculosis rates that, in South America, are 26
130 times higher among PDL than in the general population⁴.

131
132 Recognizing the crisis of tuberculosis in prisons, the Pan-American Health Organization (PAHO)
133 began requesting data from member states on case notifications occurring among PDL. Between
134 2014 and 2019, the percent of all notified tuberculosis cases in the region occurring among PDL
135 increased from 6.6% to 9.4%^{3,5}. While alarmingly high, this figure underestimates the
136 tuberculosis burden attributable to incarceration, for several reasons. First, the case detection
137 ratio is lower in prisons than in the general population⁵. Second, individuals who acquire
138 infection in prison often do not progress to tuberculosis disease until after release. Indeed,
139 previous studies showed that formerly incarcerated individuals had elevated rates of tuberculosis
140 for up to seven years following release from prison^{6,7}. As notifications databases do not record
141 information on incarceration history, these cases are not currently attributed to incarceration⁸.
142 Finally, infections acquired in prisons, including among people who work in or visit prisons, can
143 spread in the community. Accordingly, genomic epidemiologic studies have identified
144 tuberculosis transmission chains that span prisons and communities⁹⁻¹³. Therefore, existing
145 studies that focus on tuberculosis occurring in prisons overlook the role of incarceration as a
146 population-level tuberculosis driver.

147
148 Understanding the full contribution of incarceration to the worsening tuberculosis epidemic in
149 Latin America is critical to inform tuberculosis prevention strategies and resource allocation.
150 Furthermore, the impact of alternative incarceration policies on the tuberculosis epidemic
151 remains unknown, as previous studies have focused on biomedical interventions. In this study,
152 we use mathematical modeling to quantify the population-level burden of tuberculosis
153 attributable to incarceration in six countries: Argentina, Brazil, Colombia, El Salvador, Mexico,
154 and Peru. Specifically, we hypothesize that the rise in incarceration since 1990 has produced a
155 growing excess tuberculosis burden and hindered tuberculosis progress in the region. We
156 additionally simulate alternative incarceration policies and project their impact on future
157 population tuberculosis incidence.

158
159 **METHODS**

160 *Setting*

161 We selected countries in Latin America, defined as Mexico, Central America, and South America,
162 based on data availability and to represent regional heterogeneity in incarceration and
163 tuberculosis trends.

164

165 *Data sources*

166 We collected data on incarceration prevalence, prison entries or releases, and recidivism from
167 each country's penitentiary department or census agency via published reports and information
168 requests (**Table S1, Appendix**). We also referenced reports and articles published by researchers,
169 international agencies, and journalists. Population estimates and projections were obtained from
170 the World Population Prospects. Population-wide tuberculosis notifications and incidence
171 estimates were retrieved from the WHO Global Tuberculosis Report¹. Notifications and
172 incidence estimates for PDL were sourced from PAHO and a recent study⁵ (**Table S2**).

174 *Model development and calibration*

175 We developed a deterministic, meta-population compartmental model to simulate incarceration
176 and tuberculosis transmission (**Figure S1, Table S3, Appendix**). The model includes a simple
177 representation of tuberculosis natural history across five compartments: susceptible, early latent,
178 late latent, infectious, and recovered. These compartments are replicated across four population
179 strata, which individuals traverse via incarceration and release: never incarcerated, currently
180 incarcerated, recent history of incarceration, and distant history of incarceration. We distinguish
181 between recent and distant incarceration history to account for the elevated risk of recidivism,
182 tuberculosis, and mortality in the early period post-release^{6,7,14}. The model does not include HIV,
183 drug resistance, or age structure and excludes children aged 14 years and under who are assumed
184 to not be at risk of incarceration. We include low levels of mixing between incarcerated and non-
185 incarcerated individuals to represent interactions with prison staff and visitors.

186
187 We fit the model independently for each country to incarceration and tuberculosis data from
188 1990 to 2023. Yearly calibration targets included incarceration prevalence, prison entries
189 (admissions), and recidivism, as well as total and within-prison tuberculosis incidence and
190 notification rates (**Tables S1-S2**). We accounted for uncertainty by sampling from distributions
191 for calibration targets and for a subset of parameters that were fixed during calibration (**Tables**
192 **S3-S4**). For each sample of calibration targets and fixed parameters, we then ran optimization
193 algorithms to calibrate the remaining parameters, obtaining at least 1000 fitted parameter sets per
194 country.

195
196 For time-varying parameters, we let the model reach equilibrium with baseline values and then
197 applied rates of change starting in the year 1990. Changes in incarceration prevalence over time
198 were achieved through changes in prison entry and release rates; changes in tuberculosis
199 incidence and notification rates were achieved through changes in effective contact rates, disease
200 progression rates, and diagnosis rates (**Table S5**). We also accounted for COVID-19 pandemic-
201 related changes (**Table S6**).

203 *Excess burden estimates*

204 For each country, we quantified the excess population-level tuberculosis incidence attributable to
205 the rise in incarceration prevalence since 1990 by simulating a counterfactual scenario where
206 incarceration prevalence and dynamics remained constant at 1990 levels. To operationalize this,
207 for each set of fitted parameters, we re-ran the model from 1990, with time-dependent changes in
208 prison entry and release rates turned off. We also eliminated time-dependent changes in the
209 effective contact rate within prison, which we assumed to be linked to growing prison
210 populations. We then calculated the excess burden as the relative and absolute difference in

211 population tuberculosis incidence between the observed and counterfactual scenarios. We report
212 excess burden estimates in 2019 due to COVID-19-related uncertainty, but we include estimates
213 for 2022 in the Appendix. We also analyze where excess incident cases arose—i.e., where
214 individuals progressed or relapsed to infectious tuberculosis disease—and where cases were
215 diagnosed and notified.

216 217 *Sensitivity analyses and meta-modeling*

218 We performed sensitivity analyses to test two assumptions. First, in the main analysis, we
219 assumed that the effective contact rate in prison could change over time due to observed
220 increases in prison tuberculosis notification rates that could not be solely explained by
221 improvements in case detection. We performed a sensitivity analysis holding the effective
222 contact rate in prison constant over time. Second, in the main analysis, we assumed proportionate
223 mixing among population strata outside of prison. In a sensitivity analysis, we implemented
224 assortative mixing in the community based on incarceration history. Holding total contact rates
225 constant, we increase the relative amount of intragroup mixing among formerly incarcerated
226 individuals to three times that in the main analysis.

227
228 We additionally conducted linear regression meta-modeling using a multi-level model to identify
229 parameters associated with variation in excess burden estimates¹⁵. The Appendix includes
230 methodological details for sensitivity analyses and meta-modeling, as well as meta-modeling
231 results.

232 233 *Transmission population attributable fraction (tPAF)*

234 To estimate the tPAF for incarceration among individuals aged 15 and older, we simulated a
235 scenario where incarceration prevalence was gradually reduced to zero by 2019 (**Appendix**). For
236 each country, we calculated the tPAF for incident cases in 2019 as follows¹⁶:

$$237 \quad tPAF = \frac{Pop.TB\ incidence_{observed} - Pop.TB\ incidence_{incarceration\ eliminated}}{Pop.TB\ incidence_{observed}}$$

238
239 We compared our estimates of the tPAF for incarceration with WHO's country-specific estimates
240 of the fraction of all incident cases attributable to each of five major tuberculosis risk factors in
241 2019. We note that risk factors may be overlapping, and that WHO's estimates apply to varying
242 age groups: undernutrition, all ages; HIV, all ages; alcohol use disorders, age ≥ 15 ; smoking, age
243 ≥ 15 ; diabetes, age ≥ 18 . For diabetes, the PAF is reported as a fraction of all cases among
244 individuals age ≥ 15 , rather than a true PAF, and therefore may be an overestimate.

245 246 *Future policy scenarios*

247 We simulated various incarceration scenarios over a ten-year period and estimated their impacts
248 on future population tuberculosis incidence. Under the reference or "stable" scenario, prison
249 entry and release rates remain constant for ten years. Under the "continue trends" scenario, entry
250 and release rates undergo the same relative net change between 2024 and 2034 as they did over
251 the prior ten years. The remaining decarceration scenarios involve pairwise combinations of 0-
252 100% decreases in entry rates and increases in release rates, with the percent change target
253 achieved linearly by the end of the ten-year period. We computed the percent difference in

254 projected population tuberculosis incidence in 2034 under each scenario compared to that
255 expected under the stable scenario.

256
257 For El Salvador, where the prison population has nearly tripled since March 2022 under a
258 continued state of emergency¹⁷, we introduced additional parameters to model recent trends
259 (**Table S7**). We then simulated the following future scenarios: 1) continuation of current entry
260 and release rates under the state of emergency; 2) passive abatement through a gradual return to
261 pre-emergency entry and release rates; and 3-5) active cessation and reversion to pre-emergency
262 incarceration prevalence in ten, five, or two years, with continued decarceration thereafter.
263 Rather than comparing to a reference scenario, we computed the percent change in population
264 tuberculosis incidence in 2034 under each scenario compared to 2021. Methods for future
265 projections are detailed in the Appendix.

266 267 *Role of the funding source*

268 The funders had no role in study design, data collection, data analysis, data interpretation,
269 writing of the report, or decision to submit the paper for publication.

270 271 **RESULTS**

272 Argentina, Brazil, Colombia, El Salvador, Mexico, and Peru exhibited wide variability in the
273 population-wide and within-prison burden of tuberculosis between 1990 and 2019 (**Figure 1**).
274 Together, they represent 82.4% of the region's incarcerated population, 79.7% of total
275 tuberculosis notifications, and 80.1% of tuberculosis notifications in prisons in 2018.

276
277 Between 1990 and 2019, the prevalence of incarceration among the population aged 15 and older
278 more than doubled in all countries except Mexico, reaching 366 (range: 216 to 825) per 100,000
279 in 2019 across the six countries (**Table 1**). This historical rise was driven by an increase in prison
280 entry rates (Argentina and Brazil), an increase in average duration of incarceration (Peru), or
281 both (El Salvador, Colombia, Mexico) (**Table S8**). By 2019, the average duration of
282 incarceration ranged from 1.3 years (95% UI 0.9-2.1) in Brazil to 6.2 years (4.4-9.0) in El
283 Salvador (**Table 1**). Further, the percent of the prison population with prior incarceration history
284 ranged from 17% (95% UI 11-22) in El Salvador to 51% (39-59) in Brazil. Such differences in
285 incarceration dynamics contribute to the heterogeneity in community prevalence of incarceration
286 history among the population age 15 and older, which ranged from 1.6% (95% UI 1.0-2.3) in
287 Argentina to 7.6% (4.9-10.7) in Mexico (**Table 1**). Across all six countries in 2019, while 1.3
288 million people were incarcerated at any given time, we estimate that an additional 16.7 million
289 (95% UI 12.9-21.0 million) people were living with incarceration history.

290
291 Compared to a counterfactual scenario where incarceration prevalence remained constant since
292 1990, the observed rise in incarceration prevalence since 1990 resulted in an estimated 30,241
293 (95% UI, 24,333-39,303) excess incident cases in 2019 across the six countries (**Figure 2A-B**,
294 **Table 2**). The excess population tuberculosis incidence in 2019 varied widely across countries,
295 ranging from 5% or 1.1 (95% UI 0.6-1.9) cases per 100,000 person-years in Mexico to 133% or
296 32.0 (25.6-40.7) cases per 100,000 person-years in El Salvador (**Table 2**). Estimates for the year
297 2022 were comparable (**Table S9**). Sensitivity analyses eliminating temporal changes in within-
298 prison transmission rates, or assuming assortative mixing in the community by incarceration
299 history, did not substantively change our results (**Table S10**).

300
301 The burden of excess incident cases that arose (i.e., progressed to disease or relapsed) in prisons
302 in 2019 exceeded that of excess cases *diagnosed* within prisons by 37%, ranging from 11% in El
303 Salvador to 104% in Colombia (**Figure 2C**). Furthermore, a considerable fraction of the excess
304 burden in 2019 was comprised of incident cases arising among formerly incarcerated individuals,
305 particularly in countries with shorter average duration of incarceration (**Figure 2C**). For instance,
306 the percent of excess cases arising in the community among formerly incarcerated individuals
307 was 39% (95% UI 26-57) in Argentina, 34% (21-47) in Brazil, and 34% (22-47) Mexico. In all
308 countries, estimated tuberculosis incidence rates among individuals with recent or incarceration
309 history were much higher than population-wide incidence rates (**Figure S2, Table S12**).

310
311 Collectively across countries, incarceration was the leading determinant compared to other key
312 tuberculosis risk factors, accounting for an estimated 23.5% (95% UI, 17.7-32.0) of incident
313 cases in 2019 among the population aged 15 and older. The country-specific tPAF of
314 incarceration in 2019 reached 58.0% (95% UI, 51.6-63.5) in El Salvador, 31.8% (24.7-41.3) in
315 Brazil, 19.5% (13.9-20.0) in Peru, 18.9% (12.2-28.8) in Colombia, 7.7% (5.2-16.3) in Argentina,
316 and 6.4% (4.0-9.8) in Mexico (**Table 2**). Despite this variability, the country-specific tPAF for
317 incarceration was consistently greater than or commensurate with PAFs for other major risk
318 factors (**Figure 3**). Moreover, our median tPAF estimate was 1.3 to 5.3 times the percent of all
319 tuberculosis notifications occurring in prisons in 2019 (**Figure 3**).

320
321 We projected the impact of future incarceration policies, implemented from 2024 to 2034, on
322 population tuberculosis incidence in 2034. Future projections for El Salvador are described
323 further below. For all other countries, projected incarceration prevalence in 2034 under each
324 scenario is shown in **Figure 4A** and **Table S13**. If recent incarceration trends continue, projected
325 population tuberculosis incidence in 2034 would be slightly (<3%) higher in Peru, Argentina,
326 and Mexico, and slightly lower in Colombia and Brazil (**Figure 4B**). More active decarceration
327 interventions—for instance, a simultaneous 50% decrease in entry rates and 50% increase in
328 release rates—could reduce population tuberculosis incidence in 2034 by an estimated 21.0% (95%
329 UI 13.8-29.1) in Brazil, 10.8% (7.5-15.6) in Peru, 10.0% (5.8-15.8) in Colombia, 7.5% (4.6-12.8)
330 in Argentina, and 1.0% (0.3-3.0) in Mexico. Results for additional interventions are shown in
331 **Figure S3**.

332
333 In El Salvador, maintaining the current state of emergency is projected to increase population
334 tuberculosis incidence in 2034 by 126% (95% UI 71-193) compared to pre-emergency in 2021
335 (**Figure 4C**). A gradual, passive abatement of the state of emergency would still increase
336 population tuberculosis incidence in 2034 by a projected 43% (95% UI 18-74). In contrast,
337 prompt and active cessation of the state of emergency and reversion of incarceration prevalence
338 to approximate pre-emergency levels by 2034 could restore population tuberculosis incidence in
339 2034 to its approximate rate in 2021. More decisive actions to revert pre-emergency
340 incarceration prevalence in two or five years and continue further decarceration thereafter could
341 reduce population tuberculosis incidence in 2034 by as much as 29% (95% UI 21-37) compared
342 to 2021.

343
344 **DISCUSSION**

345 Across six Latin American countries, more than 30,000 incident cases in 2019 can be attributed
346 to the rise in incarceration since 1990. Collectively in these countries, incarceration accounts for
347 an estimated 23.5% (17.7-32.0) of incident cases in 2019 among individuals aged 15 and older, a
348 greater fraction than any other determinant. Against the backdrop of the region's alarming
349 increase in tuberculosis incidence over the last decade, we project that policies to reduce
350 incarceration prevalence may considerably reduce future population tuberculosis incidence.
351 Together, our results implicate incarceration as a leading population-level driver of the
352 tuberculosis epidemic in Latin America. In addition to improving prison conditions and
353 implementing biomedical interventions in prisons, criminal legal reforms and development of
354 non-carceral alternatives will be critical to re-ignite progress towards tuberculosis elimination.

355
356 Our findings reveal how the population-level impact of incarceration on tuberculosis has been
357 previously under-recognized by conventional approaches that rely on case notifications within
358 prisons^{3,18-21}. Such approaches overlook not only under-detection in prisons but also the highly
359 dynamic nature of incarceration. The constant flow of people who are newly incarcerated and
360 released yields a much larger population ever exposed to the high-risk carceral environment,
361 which we estimate across the six countries is nearly 14 times the size of the population in prison
362 at any given time. By using a dynamic model, we were able to account for this phenomenon and
363 its interplay with the variable latent period of tuberculosis, under-detection in prisons, and
364 onward transmission in the community. As a result, we obtained tPAF estimates that far exceeded
365 the percent of notified tuberculosis cases occurring in prisons, and that increased the rank of
366 incarceration relative to other major TB determinants. Policy guidance and future research
367 should recognize incarceration as a dynamic state whose role as a tuberculosis driver and social
368 determinant transcends effects observable within prisons.

369
370 We also demonstrate the potential impact of alternative incarceration policies on the tuberculosis
371 epidemic in the region. For instance, policies that restore incarceration prevalence to levels
372 previously observed since 1990 could reduce future population tuberculosis incidence by more
373 than 10% in Brazil, Peru, and Colombia, countries which encompass the vast majority of the
374 region's tuberculosis burden. In Brazil, an intervention that reverts incarceration prevalence to its
375 2000 level would reduce population TB incidence by a projected 21.0%—greater than the
376 country's net 15.7% reduction achieved between 2000 and 2015¹⁸. In El Salvador, which already
377 had an exorbitant tPAF for incarceration prior to 2022, the state of emergency is projected to
378 have catastrophic consequences for tuberculosis. We predict that swift, resolute termination of
379 the state of emergency could enable a return to pre-emergency incidence by 2034, and that
380 further decarceration can recover, at least in part, a decade of lost opportunity for tuberculosis
381 progress. Such measures have precedent in Kazakhstan, where KNCV and Penal Reform
382 International co-led comprehensive efforts to address tuberculosis in prisons, integrating
383 biomedical interventions with decriminalization reforms, implementation of alternatives to
384 incarceration, and improvements in prison conditions²². Following expansion of the program in
385 2000, incarceration prevalence decreased by 70% and with it, the rate of tuberculosis in prisons
386 by 90%²³. Therefore, decarceration interventions, especially if coupled with biomedical
387 interventions and efforts to improve prison conditions, have substantial potential to accelerate
388 progress towards 2035 End TB strategy targets.

389

390 Our estimates of the tuberculosis burden attributable to incarceration vary greatly across the six
391 countries included, correlating strongly with country-specific disparities in tuberculosis risk
392 between prisons and the general population. Between-country variation in where excess cases
393 occur can also be attributed to distinct carceral dynamics across countries. For instance, in
394 countries with a longer average duration of incarceration, like El Salvador and Peru, our model
395 predicts that the vast majority of excess incident cases occur within prisons⁵. Conversely, in
396 countries with a shorter average duration of incarceration, i.e., Brazil and Mexico, a greater
397 proportion of excess incident cases occur in the community after prison release. Therefore, it is
398 crucial to consider incarceration dynamics and changing carceral policies in identifying optimal
399 intervention strategies.

400
401 In response to this public health crisis, bold and decisive investments and actions are needed.
402 First, international health agencies and national tuberculosis programs must improve reporting of
403 incarceration as a structural determinant of tuberculosis. This includes collecting information on
404 incarceration history in case notifications databases and including current and past incarceration
405 as a key risk factor in WHO's Global Tuberculosis Report⁸. Given the stigma and discrimination
406 faced by individuals with incarceration history, guidance should be developed with stakeholders
407 to collect this information in a sensitive manner²⁴. Second, effective strategies to prevent, detect,
408 and treat tuberculosis in incarcerated and formerly incarcerated individuals must be identified,
409 incorporated in national guidelines, and implemented at scale^{25,26}. While existing research has
410 focused on prison-based interventions, future work should expand to include formerly
411 incarcerated individuals and their community contacts.

412
413 Lastly, and equally as important, governments must implement structural reforms to reduce the
414 prison population. Rising incarceration in the region has contributed to severe prison
415 overcrowding, which is correlated with tuberculosis incidence in prisons^{2,5}. While our study
416 focused on tuberculosis, incarceration exposure has been linked to other adverse health
417 outcomes^{14,27,28}. Therefore, decarceration strategies, especially in conjunction with efforts to
418 transform conditions of imprisonment, have the potential to both accelerate tuberculosis progress
419 and improve population health at large. Such strategies should be formulated with key
420 stakeholders but may include reforms to reduce pre-trial detention, decriminalize drug use and
421 mental illness, develop and scale restorative justice-based alternatives to imprisonment, and
422 invest in preventative social, health, and welfare services^{29,30}.

423
424 Our study has several limitations. First, deterministic compartmental models are unable to
425 capture the full range of complexity in real-world phenomena. The extent to which we were able
426 to incorporate complexity in our model was constrained by inadequate data to inform model
427 parameters and assumptions. For instance, our model did not account for age, gender,
428 socioeconomic status, HIV, heterogeneity in duration of incarceration, nor heterogeneity in
429 infectiousness. We also did not model MDR-TB, which is less common in prisons in the
430 Americas than in other regions³¹. Moreover, we had little to no data to inform mixing
431 assumptions or stratum-specific parameters for formerly incarcerated individuals. In these cases
432 of insufficient data, we used wide parameter uncertainty distributions and varied our assumptions
433 in sensitivity analyses, with our findings generally remaining robust. However, the dearth of
434 reliable, publicly accessible data on incarceration and tuberculosis must be urgently addressed.

435

436 Next, our future projections are subject to great uncertainty, including uncertainty around how
437 the COVID-19 pandemic has affected and will continue to affect tuberculosis and incarceration.
438 We were unable to model specific policies or reforms (i.e., decriminalization of drug use) due to
439 insufficient data. Our future simulations also do not include changes in any other dimension
440 aside from prison entry and release rates, such as improvements in prison conditions or scale-up
441 of biomedical interventions. Generally, our historical counterfactual and future policy
442 simulations are simplistic, modifying incarceration in isolation from what is inevitably an
443 intricate web of upstream and downstream social, economic, political, and institutional forces
444 that themselves also affect population health and tuberculosis. Nonetheless, our findings
445 underscore the substantial potential for criminal legal reforms to reduce tuberculosis burden in
446 Latin America, impacts which could be enhanced by additional prison- and community-based
447 interventions.

448
449 To date we have failed to appreciate the full extent to which rising incarceration has undermined
450 tuberculosis control in Latin America. Our estimates of the outsized tuberculosis burden
451 attributable to incarceration eclipse those of other determinants that currently receive far greater
452 attention. However, this exceptional excess burden must not be regarded as inevitable. Health
453 agencies, national tuberculosis programs, ministries of justice, and other key stakeholders should
454 undertake bold commitments and actions to elevate the prominence of incarceration in national
455 and international strategies for tuberculosis control and elimination, accounting for impacts
456 beyond prison walls. These strategies should take an integrated health and human rights
457 approach, combining biomedical interventions and improvements in prison conditions with
458 actions to enable decarceration. Such measures will be critical to advancing towards regional and
459 global tuberculosis elimination targets.

460 **Table 1. Incarceration- and tuberculosis-related characteristics by country.** All population-
 461 wide prevalence estimates are for the population aged 15 and older.

	Argentina	Brazil	Colombia	El Salvador	Mexico	Peru
Incarcerated population in 1990*	21,016	90,000	32,387	5,982	93,119	17,859
Incarcerated population in 2019	109,405	755,274	123,078	38,114	200,936	95,548
Prison occupancy (%)^	112	165	146	333	97	219
Prevalence of incarceration per 100,000 in 2019	321	452	316	825	216	399
Percent increase in prevalence of incarceration since 1990**	250 (242, 255)	401 (398, 404)	133 (124, 142)	372 (335, 405)	39 (37, 41)	198 (179, 208)
Incarceration growth driven by increasing entry rates and/or duration?	Entry rates	Entry rates	Both	Both	Both	Duration
Average duration of incarceration (years)#	2.6 (1.8, 3.7)	1.3 (0.9, 2.1)	3.1 (2.3, 4.9)	6.2 (4.4, 9.0)	2.0 (1.4, 3.1)	5.7 (4.2, 8.3)
Within-prison prevalence of incarceration history (%)#	29 (20, 36)	51 (39, 59)	20 (14, 26)	17 (11, 22)	23 (16, 29)	26 (18, 32)
Community prevalence of incarceration history (%)#	1.6 (1.0, 2.3)	3.4 (1.9, 5.4)	5.7 (3.3, 7.9)	3.4 (2.4, 4.6)	7.6 (4.9, 10.7)	4.4 (3.1, 5.5)
Population-level tuberculosis notifications in 2019	11,446	85,523	14,292	3,009	23,702	31,764
Population tuberculosis notification rate per 100,000 in 2019	25.7	40.5	28.7	47.9	19.0	97.6
Prison tuberculosis notification rate per 100,000 in 2019	214	1303	784	3484	144	2945
Percent of all tuberculosis notifications occurring in prisons in 2019	2.0	11.5	6.8	44.1	1.2	8.9

462 *Data are from 1992 for Argentina. ^Estimates from World Prison Brief in 2018. #Median and 95%
 463 uncertainty intervals from at least 1000 model fits per country.

464

465 **Table 2. Estimates of population tuberculosis incidence attributable to incarceration in**
 466 **2019.** All estimates are at the population-level among individuals aged 15 and older. Incidence
 467 rate ratios and excess burden estimates were obtained from comparing incident tuberculosis
 468 cases between the observed scenario of the historical rise in incarceration and the counterfactual
 469 scenario of no change in incarceration prevalence since 1990. The population attributable
 470 fraction was estimated using a scenario where incarceration prevalence was reduced to zero by
 471 2019. 95% uncertainty intervals are shown in parentheses.
 472

	Incidence rate ratio for observed vs. counterfactual	Excess cases per 100,000 person-years relative to counterfactual	Absolute excess cases relative to counterfactual	Population attributable fraction (%)
Argentina	1.05 (1.04, 1.13)	1.4 (0.9, 3.5)	469 (321, 1189)	7.7 (5.2, 16.3)
Brazil	1.36 (1.26, 1.51)	12.0 (9.0, 16.9)	20067 (15001, 28172)	31.8 (24.7, 41.3)
Colombia	1.22 (1.13, 1.39)	5.9 (3.5, 10.5)	2296 (1381, 4093)	18.9 (12.2, 28.8)
El Salvador	2.33 (2.04, 2.66)	32.5 (26.2, 41.6)	1502 (1211, 1921)	58.0 (51.6, 63.5)
Mexico	1.05 (1.03, 1.08)	1.1 (0.6, 1.9)	1015 (577, 1739)	6.4 (4.0, 9.8)
Peru	1.18 (1.11, 1.29)	18.6 (11.0, 31.4)	4451 (2623, 7515)	19.5 (13.9, 29)

473

474 **FIGURE LEGENDS**

475

476 **Figure 1. Geographic, demographic, and epidemiologic heterogeneity among included**
477 **countries.** Countries included in the analysis are highlighted in color; remaining countries in
478 Latin America are depicted in grey. Incarceration prevalence refers to the number of people per
479 100,000 population who are incarcerated at a given point in time. Tuberculosis (TB) notification
480 rates are per 100,000 person-years. Data on prison tuberculosis notifications are only available
481 starting in 2000. Latin America includes Mexico, Central America, and South America.

482

483 **Figure 2. Excess population tuberculosis incidence attributable to the rise in incarceration**
484 **prevalence since 1990.** A) Population tuberculosis incidence per 100,000 person-years under the
485 observed and counterfactual (no rise in incarceration since 1990) scenarios. Black points
486 represent population tuberculosis (TB) incidence estimates from the World Health Organization,
487 which are available beginning in 2000. Solid lines and shaded bands represent the median and 95%
488 UI respectively. B) Excess population-wide incident tuberculosis cases per 100,000 person-years.
489 C) Median estimates of excess cases, stratified by population subgroup in which they occurred,
490 and for incident cases occurring in prison, additionally stratified by whether the disease was
491 notified or undetected during incarceration. All model results are for the population age 15 and
492 older.

493

494 **Figure 3. Population attributable fraction for incarceration and other tuberculosis risk**
495 **factors.** Median estimates and uncertainty intervals for the percent of population-level incident
496 tuberculosis cases in 2019 that can be attributed to each risk factor. The “crude” population
497 attributable fraction for incarceration, representing the percent of all notified tuberculosis cases
498 occurring in prisons, is shaded in dark red. Risk factors are listed in descending order by PAF for
499 each country. Estimates correspond to different age groups: incarceration, age ≥ 15 ;
500 undernutrition, all ages; HIV, all ages; alcohol, age ≥ 15 ; smoking, age ≥ 15 ; diabetes, age ≥ 18
501 (see **Methods**).

502

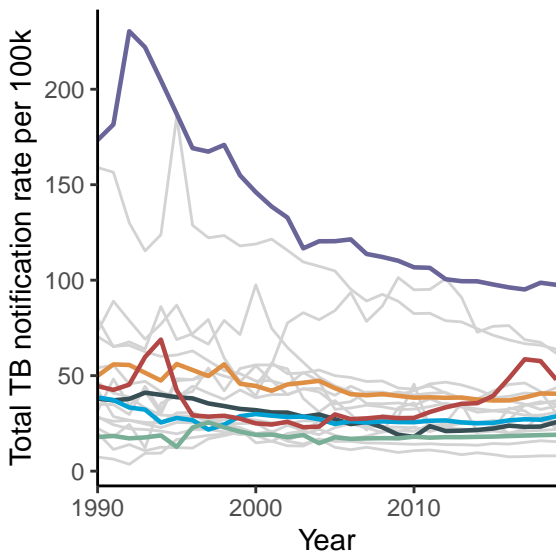
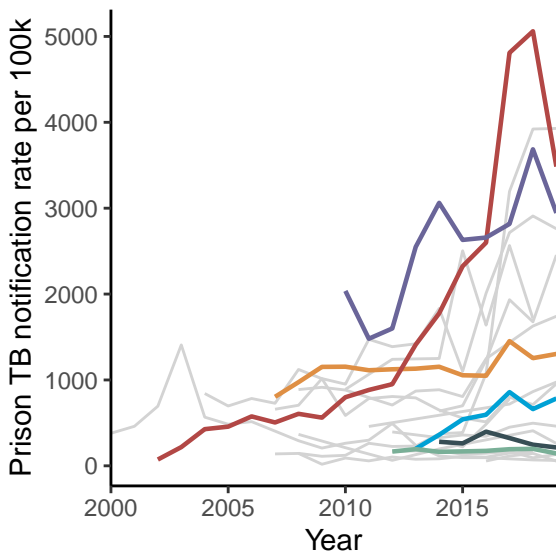
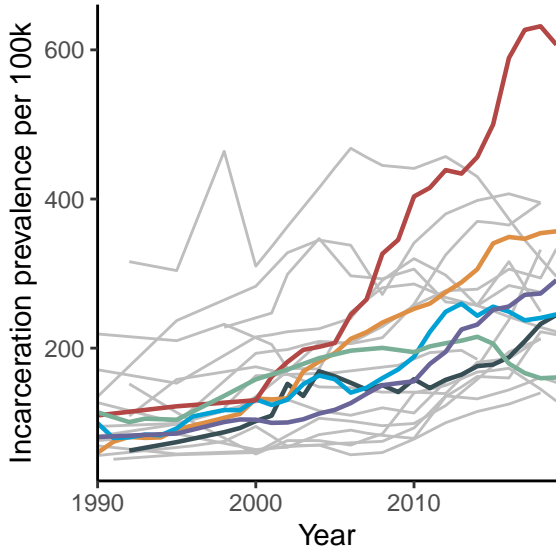
503 **Figure 4. Projected impacts of incarceration-related interventions on future population**
504 **tuberculosis incidence.** A) Median incarceration prevalence per 100,000 population aged 15 and
505 older under incarceration scenarios implemented between 2024 and 2034: stable entry and
506 release rates (reference scenario), continuation of trends from prior ten years, 25% or 50%
507 reduction in prison entry rates by 2034, 25% or 50% increase in release rates by 2034, or 25% or
508 50% change in both entry and release rates by 2034. The dashed horizontal line represents
509 incarceration prevalence in 1990. B) Percent difference in population tuberculosis incidence in
510 2034 under each incarceration scenario, relative to the reference scenario of stable entry and
511 release rates. Outliers are not shown. C) Left: Median incarceration prevalence under each
512 incarceration scenario in El Salvador: continuation of entry and release rates under the state of
513 emergency, passive abatement through gradual reversion of entry and release rates to pre-
514 emergency levels by 2034, active cessation and approximate restoration of pre-emergency
515 incarceration prevalence in ten years, or restoration of pre-emergency prevalence in five years or
516 two years with continued decarceration thereafter. The dashed horizontal line represents
517 incarceration prevalence in 1990. Right: Percent change in population TB incidence since 2021
518 under each scenario.

519

521 **REFERENCES**

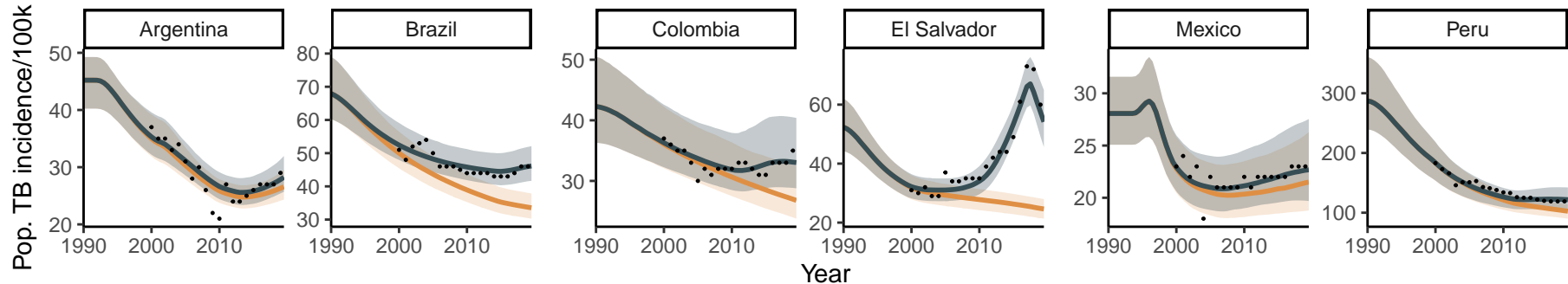
- 522 1. Global Tuberculosis Report 2023: World Health Organization, 2023.
- 523 2. (ICPR); IfCJPR. World Prison Brief.
- 524 3. Walter KS, Martinez L, Arakaki-Sanchez D, et al. The escalating tuberculosis crisis in
525 central and South American prisons. *The Lancet* 2021; **397**(10284): 1591-6.
- 526 4. Cords O, Martinez L, Warren JL, et al. Incidence and prevalence of tuberculosis in
527 incarcerated populations: a systematic review and meta-analysis. *The Lancet Public Health* 2021.
- 528 5. Martinez L, Warren JL, Harries AD, et al. Global, regional, and national estimates of
529 tuberculosis incidence and case detection among incarcerated individuals from 2000 to 2019: a
530 systematic analysis. *The Lancet Public Health* 2023; **8**(7): e511-e9.
- 531 6. Mabud TS, de Lourdes Delgado Alves M, Ko AI, et al. Evaluating strategies for control
532 of tuberculosis in prisons and prevention of spillover into communities: An observational and
533 modeling study from Brazil. *PLOS Medicine* 2019; **16**(1): e1002737.
- 534 7. Sequera G, Estigarribia-Sanabria G, Aguirre S, et al. Excess tuberculosis risk during and
535 following incarceration in Paraguay: a retrospective cohort study. *The Lancet Regional Health –*
536 *Americas*.
- 537 8. Guillermo S, Sarita A, Gladys E, et al. Incarceration and TB: the epidemic beyond prison
538 walls. *BMJ Global Health* 2024; **9**(2): e014722.
- 539 9. Walter KS, Pereira dos Santos PC, Gonçalves TO, et al. The role of prisons in
540 disseminating tuberculosis in Brazil: A genomic epidemiology study. *The Lancet Regional*
541 *Health – Americas* 2022; **9**.
- 542 10. Warren JL, Grandjean L, Moore DAJ, et al. Investigating spillover of multidrug-resistant
543 tuberculosis from a prison: a spatial and molecular epidemiological analysis. *BMC Medicine*
544 2018; **16**(1): 122.
- 545 11. Sanabria GE, Sequera G, Aguirre S, et al. Phylogeography and transmission of
546 *Mycobacterium tuberculosis* spanning prisons and surrounding communities in Paraguay. *Nature*
547 *Communications* 2023; **14**(1): 303.
- 548 12. Utpatel C, Zavaleta M, Rojas-Bolivar D, et al. Prison as a driver of recent transmissions
549 of multidrug-resistant tuberculosis in Callao, Peru: a cross-sectional study. *The Lancet Regional*
550 *Health – Americas*.
- 551 13. Trevisi L, Brooks MB, Becerra MC, et al. Who Transmits Tuberculosis to Whom: A
552 Cross-Sectional Analysis of a Cohort Study in Lima, Peru. *American Journal of Respiratory and*
553 *Critical Care Medicine* 2024.
- 554 14. Liu YE, Lemos EF, Gonçalves CCM, et al. All-cause and cause-specific mortality during
555 and following incarceration in Brazil: A retrospective cohort study. *PLOS Medicine* 2021; **18**(9):
556 e1003789.
- 557 15. Jalal H, Dowd B, Sainfort F, Kuntz KM. Linear regression metamodeling as a tool to
558 summarize and present simulation model results. *Med Decis Making* 2013; **33**(7): 880-90.
- 559 16. Mishra S, Baral SD. Rethinking the population attributable fraction for infectious
560 diseases. *The Lancet Infectious Diseases* 2020; **20**(2): 155-7.
- 561 17. Régimen de excepción. <https://www.asamblea.gob.sv/taxonomy/term/1922> (accessed
562 February 12 2024).
- 563 18. World Health Organization. WHO Consolidated Guidelines on Tuberculosis. Module 2:
564 Screening - Systematic Screening for Tuberculosis Disease, 2021.

- 565 19. World Health Organization. Tuberculosis in prisons. 2023.
566 [https://www.who.int/teams/global-tuberculosis-programme/tb-reports/global-tuberculosis-report-](https://www.who.int/teams/global-tuberculosis-programme/tb-reports/global-tuberculosis-report-2023/featured-topics/tb-in-prisons)
567 [2023/featured-topics/tb-in-prisons](https://www.who.int/teams/global-tuberculosis-programme/tb-reports/global-tuberculosis-report-2023/featured-topics/tb-in-prisons).
- 568 20. Pelissari DM, Diaz-Quijano FA. Impact of incarceration on tuberculosis incidence and its
569 interaction with income distribution inequality in Brazil. *Transactions of The Royal Society of*
570 *Tropical Medicine and Hygiene* 2020; **114**(1): 23-30.
- 571 21. Li Y, de Macedo Couto R, Pelissari DM, et al. Excess tuberculosis cases and deaths
572 following an economic recession in Brazil: an analysis of nationally representative disease
573 registry data. *The Lancet Global Health* 2022; **10**(10): e1463-e72.
- 574 22. Atabay T, Laticevski V, Vasil'eva TF. Human Rights and Health in Prisons: a review of
575 strategy and practice: Penal Reform International and Royal Netherlands Tuberculosis
576 Foundation (KNCV), 2006.
- 577 23. Pak S. Reforming the prison system: focusing on pre-trial detainees. Prison TB Alliance
578 Meeting. Asuncion, Paraguay; 2024.
- 579 24. Sue K. How to Talk with Patients about Incarceration and Health. *AMA J Ethics* 2017;
580 **19**(9): 885-93.
- 581 25. Charalambous S, Velen K, Rueda Z, et al. Scaling up evidence-based approaches to
582 tuberculosis screening in prisons. *The Lancet Public Health* 2023; **8**(4): e305-e10.
- 583 26. Narayan A, Salindri AD, Keshavjee S, et al. Prioritizing persons deprived of liberty in
584 global guidelines for tuberculosis preventive treatment. *PLOS Medicine* 2023; **20**(10): e1004288.
- 585 27. Silverman-Retana O, Servan-Mori E, Bertozzi SM, Orozco-Nuñez E, Bautista-Arredondo
586 S, Lopez-Ridaura R. Prison environment and non-communicable chronic disease modifiable risk
587 factors: length of incarceration trend analysis in Mexico City. *Journal of Epidemiology and*
588 *Community Health* 2018; **72**(4): 342-8.
- 589 28. Marmolejo L, Barberi D, Bergman M, Espinoza O, Fondevila G. Responding to COVID-
590 19 in Latin American Prisons: The Cases of Argentina, Chile, Colombia, and Mexico. *Victims &*
591 *Offenders* 2020; **15**(7-8): 1062-85.
- 592 29. United Nations. United Nations System Common Position on Incarceration. 2021.
- 593 30. Broach S, Petrone M, Ryan J, Sivaram A. Reservoirs of Injustice: How incarceration for
594 drug-related offenses fuels the spread of tuberculosis in Brazil: Yale Law School; Yale School of
595 Public Health; 2019.
- 596 31. Gygli SM, Loiseau C, Jugheli L, et al. Prisons as ecological drivers of fitness-
597 compensated multidrug-resistant Mycobacterium tuberculosis. *Nat Med* 2021; **27**(7): 1171-7.
598

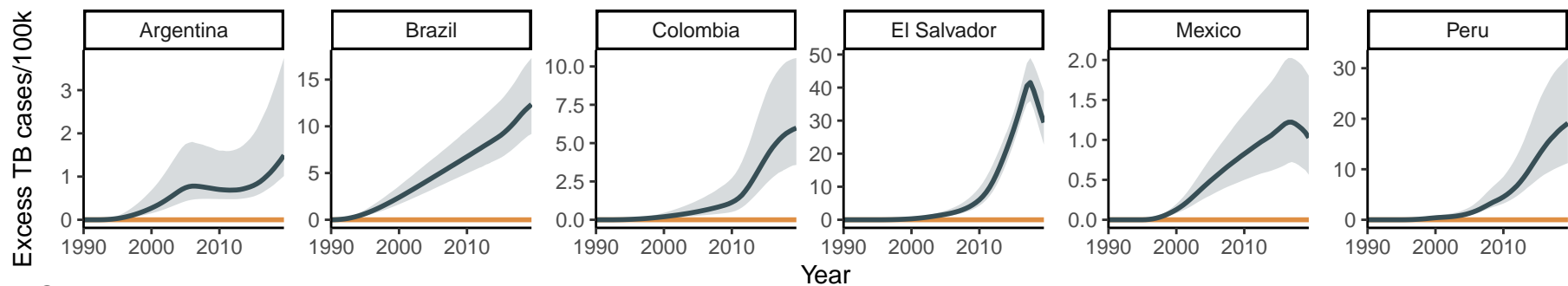


Incarceration Scenario ■ Observed ■ No Change Since 1990

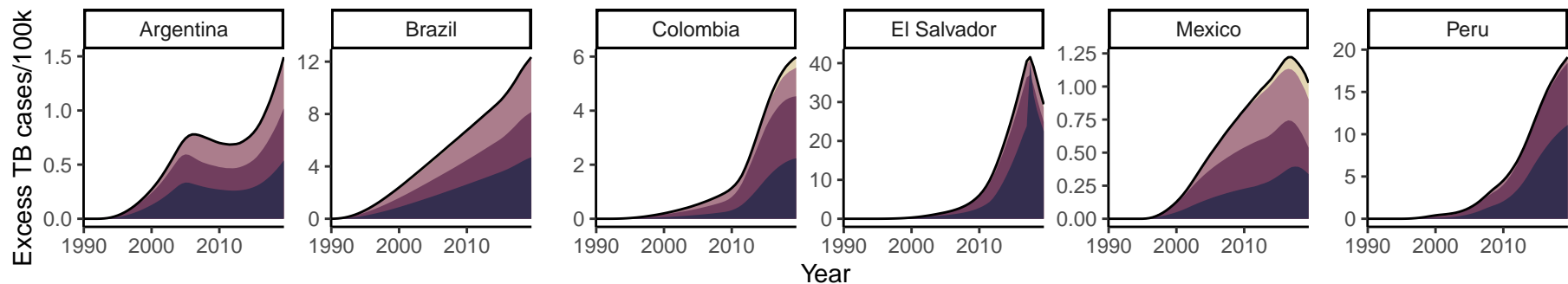
A



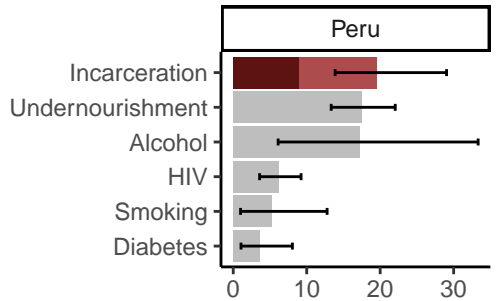
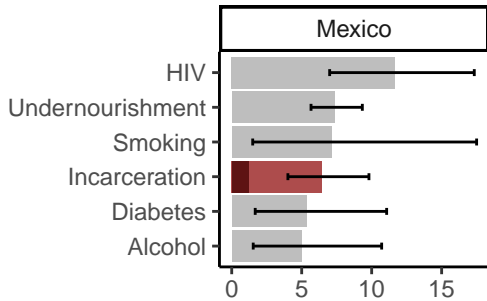
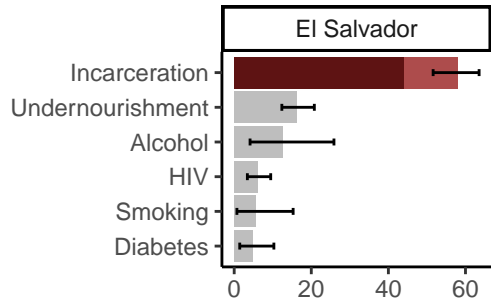
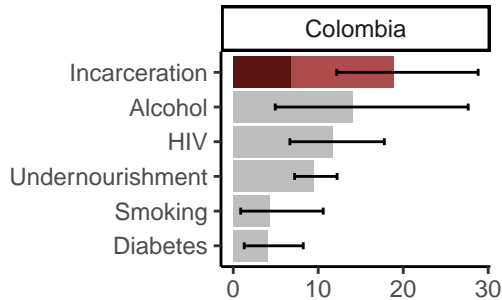
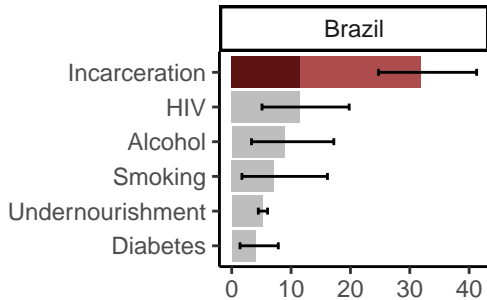
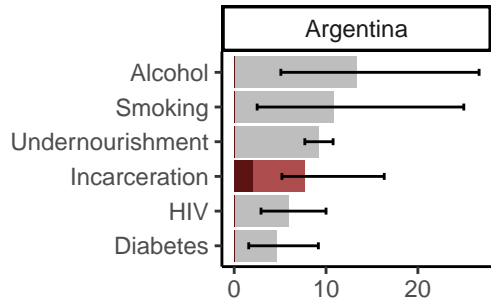
B



C



Status of Person with TB ■ In Prison (Notified) ■ In Prison (Undetected) ■ Previously Incarcerated ■ Never Incarcerated



Percent of incident cases

