

1 **Traumatic injury characteristics and patient demographics shape the human systemic**
2 **immune response to injury**

3
4 Parinaz Fathi^{1,2}, Maria Karkanitsa¹, Adam Rupert³, Aaron Lin^{1,2}, Jenna Darrah⁴, F. Dennis
5 Thomas⁴, Jeffrey Lai⁵, Kavita Babu⁵, Mark Neavyn⁵, Rosemary Kozar⁶, Christopher Griggs⁷,
6 Kyle W. Cunningham⁸, Carl I. Schulman⁹, Marie Crandall¹⁰, Irini Sereti¹¹, Emily Ricotta^{12,13},
7 Kaitlyn Sadtler^{1*}

8
9
10 ¹Section on Immunoengineering, Center for Biomedical Engineering and Technology
11 Acceleration, National Institute of Biomedical Imaging and Bioengineering (NIBIB), National
12 Institutes of Health (NIH), Bethesda, MD 20892

13 ²Unit for Nanoengineering and Microphysiologic Systems, NIBIB, NIH, Bethesda MD 20892

14 ³AIDS Monitoring Laboratory, Frederick National Laboratory for Cancer Research, Frederick MD

15 ⁴Dunlap and Associates, Inc., Cary, NC, 27511

16 ⁵Department of Emergency Medicine, University of Massachusetts Medical School, Worcester
17 MA 01655

18 ⁶Shock Trauma Center, University of Maryland School of Medicine, Baltimore MD 21201

19 ⁷Department of Emergency Medicine, Atrium Health's Carolinas Medical Center, Charlotte NC
20 28203

21 ⁸Division of Acute Care Surgery, Atrium Health's Carolinas Medical Center, Charlotte NC 28203

22 ⁹University of Miami Miller School of Medicine, Miami FL 33136

23 ¹⁰Department of Surgery, University of Florida College of Medicine, Jacksonville FL 33209

24 ¹¹Laboratory of Immunoregulation, Division of Intramural Research, National Institute of Allergy
25 and Infectious Diseases (NIAID), NIH

26 ¹²Epidemiology and Data Management Unit, Laboratory of Clinical Immunology and
27 Microbiology, NIAID, NIH, Bethesda, MD 20892

28 ¹³Preventative Medicine and Biostatistics, Uniformed Services University of the Health
29 Sciences, Bethesda MD 20814

30
31 *correspondence to: kaitlyn.sadtler@nih.gov

32

33 **This manuscript is a preprint that has not undergone peer review.**

34 **ABSTRACT**

35

36 Severe trauma can induce systemic inflammation but also immunosuppression, which makes
37 understanding the immune response of trauma patients critical for therapeutic development and
38 treatment approaches. By evaluating plasma of 50 healthy volunteers and 1000 trauma patients
39 across five trauma centers in the United States, we identified 6 novel changes in immune proteins
40 after traumatic injury and further new variations by sex, age, trauma type, comorbidities, as well
41 as a new biomarker predictor of patient survival. Blood was collected at the time of arrival at Level
42 1 trauma centers and patients were stratified based on trauma level, tissues injured, and injury
43 types. Trauma patients had significantly upregulated proteins associated with immune activation
44 (IL-23, MIP-5), immunosuppression (IL-10) and pleiotropic cytokines (IL-29, IL-6). A high ratio of
45 IL-29 to IL-10 was identified as a new predictor of survival with ROC area of 0.933. Using machine
46 learning, we identified three increased proteins (MIF, TRAIL, IL-29) and three decreased proteins
47 (IL-7, TPO, IL-8) that were the most important in distinguishing a trauma blood profile from those
48 of healthy controls. Biologic sex altered phenotype with IL-8 and MIF being lower in healthy
49 women, but higher in female trauma patients when compared to male counterparts. This work
50 identifies new responses to injury that may influence systemic immune dysfunction, serving as
51 targets for therapeutics and immediate clinical benefit in identifying at-risk patients.

52 INTRODUCTION

53

54 Traumatic injury leads to a cascade of immune activation to prevent infection and scavenge debris
55 from damaged tissues, followed by a refractory immunosuppressive response due to increases
56 in glucocorticoids and responses to the initial inflammatory activation.¹⁻⁴ This natural immune
57 suppression can increase susceptibility to downstream infections at the injury site as well as
58 opportunistic infections such as respiratory viruses and bacterial pneumonia. The large number
59 of variables – both intrinsic to proteins and cells of the immune response and extrinsic to the injury
60 itself – complicates inferences about factors affecting patient outcomes and efforts to develop
61 therapeutic agents to improve treatment. By assembling a large, diverse cohort of trauma
62 patients, we can elucidate the immune phenotypes associated with traumatic injury and their role
63 in and prediction of trauma recovery.

64

65 Recent technological advances have increased our understanding of the human immune
66 response to traumatic injury.⁵ In addition to glucocorticoid release, a significant increase in
67 interleukin-10 (IL-10) is associated with immunoregulation and immunosuppression. Increasing
68 severity of wounds is associated with increasing systemic (peripheral blood) concentrations of IL-
69 10.⁶ Other cytokines such as IL-4, IL-6, IL-8, and transforming growth factor-beta (TGF β) have
70 been implicated in systemic inflammatory response after trauma.⁷ Severe injury has been shown
71 to correlate with downregulation of IL-9, IL-21, IL-22, IL-23, and IL-17E/IL-25 in blunt trauma
72 patients, all of which are mediators of tissue repair.⁸

73

74 While tissue-based analyses often yield more insight into the immune function in response to
75 specific injury types, peripheral blood, despite being limited to providing systemic rather than local
76 information, is a more easily accessible analytic medium that can be collected longitudinally and
77 less invasively. An ability to infer outcomes or inform therapeutic decision making from peripheral
78 blood proteins can lead to potential diagnostic platforms for use in triage, allow more insight into
79 the basic mechanistic responses to injury, and provide investigative targets to explore for downline
80 therapeutic engineering.^{4,9} Here, we present a large, 1000 patient retrospective study on human
81 systemic immune response to trauma, evaluating 59 plasma proteins in comparison to healthy
82 controls, and stratified by demographics, mechanism of injury, body region, and tissues injured.
83 These plasma proteins were selected to include proteins associated with inflammation and
84 immunity whose levels were detectable with multiplexed assays based on preliminary analyses
85 of a small subset of samples. Furthermore, we utilize machine learning to classify proteins that

86 are important for differentiating a trauma-associated inflammatory profile and identify a novel
87 predictor of patient survival that can have immediate clinical impact. This work represents the
88 largest study of plasma proteins in trauma patients to date and provides insight that can be used
89 for patient diagnosis and prediction of patient outcomes, as well as a potential therapeutic
90 pathway for further research.

91

92 **RESULTS**

93

94 We analyzed 1000 plasma samples collected as a part of a study focused on drug prevalence
95 among trauma victims treated at selected Level 1 trauma centers¹⁰⁻¹² and 50 samples from
96 healthy individuals at the NIH. Trauma patient samples came from 5 centers located in Worcester
97 MA, Baltimore MD, Charlotte NC, Jacksonville FL, and Miami FL. Of the trauma samples, 997
98 had complete clinical and laboratory data (**Supplementary Figure 1**). The median age of trauma
99 patients was 39 years (**Figure 1a, Supplemental Table 1**). The majority of patients were male
100 (71.8%) and White/European American (55.1%). Black/African Americans represented 36.9%,
101 other races comprised 1.6%, and race was unknown for the remaining 6.2% of patients (**Figure**
102 **1b**). Many patients were seen in the emergency department and discharged (60.3%); 25% were
103 sent to the operating room (OR), 12.3% to the intensive care unit (ICU), and 2.5% ultimately died
104 from their injuries (**Fig. 1b**). Almost half (42%) of patients were admitted due to a motor vehicle
105 crash (MVC) followed by falls (21.1%) and gunshot/shotgun wounds (GSW, 11.2%). Injury types
106 included fractures (57.9%), lacerations (40.7%), abrasions (31.5%), and contusions (23.6%) with
107 many patients reporting more than one injury type (**Figure 1c**). Additionally, we categorized
108 injuries as “skin breaking” (avulsion, incision, laceration, open fracture, stab wound, puncture,
109 gunshot wound, amputation, abrasion, and burns) or “internal” (hematoma, ecchymosis,
110 contusion, seatbelt mark, swelling, fracture, deformity) to evaluate tissue-specific immune
111 responses (**Figure 1c**). Additional details are in **Supplemental Figure 1**.

112

113 *Significant immunosuppression and select protein upregulation in trauma patients*

114

115 After normalization and clustering of all proteins, the healthy controls clustered together in a
116 hierarchical dendrogram in comparison to trauma samples (**Figure 1d, Supplemental Figure 2**).
117 Tobit regression revealed that traumatic injury led to overall increased levels of 9 proteins (IL-10,
118 MIF, IL-29, TRAIL, IL-23, IL-16, IL-6, IL-1Ra, MIP-5) and decreased levels of 23 proteins
119 compared to healthy controls (MCP-4, IP-10, MDC, FLT3L, Eotaxin-3, CTACK, TARC, MCP-1,

120 Eotaxin, IL-3, TPO, MIP-1b, ENA-78, MIP-3b, I-309, IL-21, IL-12/IL-23p40, IL-17E/IL-25, MIP-1a,
121 VEGF-A, IL-7, IL-8, IL-2, **Figure 2a,b, Supplemental Figure 3a**). The greatest differences in
122 protein concentration between the total trauma population and healthy controls were a strong
123 upregulation of IL-10 (23.1% increase versus healthy control, 95% CI: 5.0 – 106.8) and a strong
124 downregulation of IL-2 (97.8% decrease, CI: 91.8 – 99.4). The smallest increase detectable was
125 a 1.46% increase in MIP-5/CCL15 (1.1 – 1.9) and the smallest decrease was a 29.1% decrease
126 in MCP-4/CCL13 (14.4 – 41.3).

127

128 Most cytokines and chemokines were detectable (**Figure 1d, Supplemental Figure 4**), although
129 several, including IL-10, IL-2, IL-5, IL-23, and IFN β , were below the assay limit of detection (LOD)
130 in >75% of either trauma or control samples. We therefore evaluated whether trauma influenced
131 the probability of a protein concentration being below the LOD. We found that 30 proteins were
132 significantly more likely to be below LOD in trauma samples (CTACK, ENA-78, IFN β , IFN γ , I-TAC,
133 IL-2, IL-3, IL-5, IL-7, IL-9, IL-13, IL-15, IL-17A/F, IL-17E/IL-25, IL-17F, IL-21, IL-22, IL-31, IL-33,
134 MCP-4, MIP-3a, IL-6, IL-27, IL-17B, MIP-1a, MIP-3b, SDF-1a, TNFa, TRAIL, VEGF-A) while 4
135 were significantly more likely to be below LOD in healthy controls (IL-4, IL-10, IL-23, IL-29), with
136 the largest differences of each being IL-2 (46.3% difference below LOD in trauma vs healthy,
137 $p < 0.001$) and IL-10 (32.7% difference in trauma vs healthy, $p < 0.001$) (**Figure 2c, Supplemental**
138 **Figure 4**). In terms of patient sex, the pattern of differences in protein concentration were similar
139 when controlling for sex in trauma patients versus healthy controls (**Supplemental Figure 5**);
140 however, two proteins had significantly different patterns in males and females. IL-8 and MIF were
141 higher in female trauma patients when compared to male but the opposite in healthy controls
142 (**Figure 2d**).

143

144 As patient age spanned 83 years, we evaluated protein levels as a function of age. When
145 controlling for age, trauma patients and healthy controls had a similar pattern of protein
146 concentrations (**Supplemental Figure 5**). In trauma patients, the concentrations of several
147 proteins, including YKL-40 (CHI3L1), IL-6, IL-8, IFN γ , and others, were positively correlated with
148 patient age (**Figure 2e**). Comparatively, few protein concentrations decreased with age (ENA-78
149 (CXCL5), TRAIL, IL-16, and Gro-a (CXCL1)). While heterogeneity in protein concentration and a
150 smaller sample of healthy controls prohibited a direct statistical comparison of the regression
151 coefficients between healthy controls and trauma patients, we did observe some age-related
152 patterns in proteins that were significantly different in trauma patients versus healthy controls
153 overall (**Figure 2f – j**). In proteins that were significantly higher in trauma patients versus controls,

154 increasing age had a greater impact on protein concentration (in either direction) (**Figure 2f**). In
155 proteins significantly decreased in trauma patients, the association with age appeared to be more
156 pronounced in healthy controls (**Figure 2g**). The effect of age appeared negligible when protein
157 concentration was equal in healthy controls and trauma patients, with both groups having similar
158 age trends (**Figure 2h**). Raw data for representative analytes is shown in **Figure 2i** and **2j**. Of the
159 proteins that exhibited significant changes as a result of traumatic injury, some variability was
160 observed with self-reported race (IL-12/IL-23p40 and ENA-78, **Supplemental Figure 6**).

161

162 *Trauma level, location, and tissue injured alter immune profile*

163

164 Each patient was categorized as level of trauma activation 1 – 4 per the admitting trauma center,
165 with 1 being the most severe (n = 177) and 4 being alert (n = 490) with a higher risk of death in
166 Level 1 patients compared to level 4 (**Supplementary Figure 7a-g**). Several proteins were
167 significantly associated with trauma level. Specifically, IL-1Ra and IL-16 were increased in severe
168 trauma compared to alert patients (**Figure 3a**) and TPO, IL-21, IL-22, IL-17F, IL-31, IL-33, IL-
169 17A/F, IL-17E/IL-25, and IL-23 were decreased in severe trauma (**Figure 3a**). While not correlated
170 with trauma level, an increase in IL-29 in patients who survived trauma was noted and when
171 compared to IL-10 as a ratio of concentrations, high risk patients could be identified with a low IL-
172 29:IL-10 ratio (**Figure 3b, Supplementary Figure 7h-k**). Analyzing these data using a receiver
173 operating characteristic curve (ROC) we found an area of 0.933 with a sensitivity of 100% (95%
174 CI: 70.09 - 100%) and specificity of 85% (81.3 – 88.76%) suggest a potential diagnostic tool that
175 can be used to identify patients that have sustained less severe trauma but are at risk for death
176 (**Figure 3c**).

177

178 In addition to these differences in trauma level, we saw alterations in immune profile dependent
179 upon the injury location (**Figure 3d,e**). Trauma location was classified as torso only, head/neck
180 only, peripheral only, a combination, all, or unknown (**Figure 3e**). When evaluating IL-29 (an IFN λ)
181 as a function of injury location, we found that patients that had sustained injuries in all locations
182 (torso, head/neck, peripheral) had lower concentration when compared to those that only
183 sustained injuries on the periphery (**Figure 3f**). As with patient survival, this pattern was inverted
184 with IL-10 (**Figure 3g**). There was no effect with IFN γ (which was also not significantly increased
185 in trauma patients) suggesting this is not a pan-interferon pattern (**Figure 3h**).

186

187 Variations could also be detected by mechanism of injury, whether or not it was an internal versus
188 penetrating wound (**Figure 3i**), as well as subset by hard (bone) and soft tissue injuries (**Figure**
189 **3j,k**). These subsets were selected to enable analysis of variables that are known to affect
190 preclinical models. As with other variables, IL-10 concentration depended upon tissue type, with
191 combination internal soft tissue and bone injuries trending higher than bone wounds alone (4.4%
192 higher than HC versus 2.5%, **Figure 3l**). This correlated with injury mechanisms that were more
193 likely to induce compound injuries such as MVCs (**Figure 3m,n**) wherein IL-10 trended higher
194 than injuries with just one factor (e.g. stab, 3.3% versus 2.0%, **Figure 3o**).

195

196 *Immune response to trauma is altered in the presence of active respiratory virus infection*

197

198 Given sampling occurred during the COVID-19 pandemic, a proportion of patients were tested for
199 COVID-19 upon admission to the hospital (66%). Control samples were not tested for SARS-CoV-
200 2 and were excluded from this analysis. Using the data from patients with test results, we
201 compared the immune profiles of trauma patients that tested positive and those that tested
202 negative for active SARS-CoV-2 infection (**Figure 3p**). A total of 25 people tested positive for
203 SARS-CoV-2 and were compared to 612 people who tested negative for SARS-CoV-2 infection.
204 Those without COVID testing or with undetermined results were excluded from this analysis.
205 SARS-CoV-2 positivity appears to be associated with a slight decrease in IL-10 and IL-6 (**Figure**
206 **3p**) which were both upregulated in trauma patients relative to healthy controls overall (**Figure**
207 **2b**). IL-4, a protein associated with type-2 immunity, trends higher in SARS-CoV-2+ patients, while
208 IL-13 trends lower in SARS-CoV-2+ patients. These changes were not statistically significant after
209 correction for multiple comparisons.

210

211 *Animal model correlates with human immunomodulation after traumatic injury*

212

213 As traumatic injuries cannot be randomized in human clinical studies, many researchers rely on
214 animal models to evaluate therapeutics for wound management and tissue reconstruction. To
215 assess similarities and differences between human trauma response and animal models we
216 evaluated RNAseq data following traumatic soft tissue injuries in three common model organisms:
217 mice, rats, and pigs. When mining bulk RNAseq data,¹³⁻¹⁶ we found that early responses to
218 volumetric muscle injury in rats led to increases in *Il10*, *Il16*, *Il6*, *Il23a*, and *Tnfsf10* (encoding
219 TRAIL) similar to human responses (**Figure 4a**).^{13,17} We also found a modest increase in *Mif* and
220 *Il17b*. These trends were maintained in a later timepoint of a porcine volumetric muscle loss (VML)

221 model,^{14,18} however further study of earlier timepoints with increased replicates is needed (**Figure**
222 **4b**). This was recapitulated to some degree in freeze-based muscle injuries in mice, including
223 upregulation of *Il10*, *Il1rn* (not seen in rat VML), *Il16*, *Il6*, but with minimal upregulation *Il23a* and
224 *Tnfsf10* (**Figure 4c**).^{15,19} In skin injuries of mice, a robust upregulation of *Il23a* was seen in multiple
225 injury locations including the abdomen, back/dorsum, and cheek at 3 days post-injury (**Figure**
226 **4d**).^{16,20}

227
228 Additionally, we performed VML surgeries on mice and evaluated peripheral blood at 24 hours
229 post-injury for immediate responses to trauma that are detectable in the plasma of mice (**Figure**
230 **4e-g**). Using a cytokine/chemokine blot to screen these responses, we found multiple proteins
231 that were modulated after injury (**Figure 4e**). Several were systemically altered including
232 chemokines CXCL13, CCL6, and CCL21 (**Figure 4f**). Compared to our human data, we found a
233 low signal to noise ratio (suggesting low concentrations), but trending increases in IL-10, IL-1ra
234 (encoded by *Il1rn*), IL-6, and IL23 (**Figure 4g**). Unfortunately, IL-29 is a pseudogene in mice and
235 rats and could not be evaluated mechanistically, highlighting a limitation in animal models for
236 studying trauma immunology.

237
238 *Protein profile classification using machine learning*

239
240 Through t-stochastic neighbor embedding (tSNE), an unsupervised clustering method, using only
241 the 59 protein concentrations, we identified an island of healthy controls that clustered separate
242 from trauma patients (**Figure 5a**). While some regions had increased enrichment for various
243 factors such as sex, age, outcome, and injury mechanism, only healthy controls could be easily
244 identified (**Figure 5b**). Interestingly, a small cluster appeared that had significantly higher levels
245 of YKL-40 than the rest of the trauma samples (mean log concentration 17.7 pg/mL vs 12.9 pg/mL,
246 $p < 0.001$) (**Figure 5a-b, lower left**), despite YKL-40 not being significantly associated with any
247 trauma characteristics aside from a fall injury (**Supplemental Figure 6**). This small cluster was
248 also older than the total trauma population (median 59 years vs 39 years) which we showed was
249 associated with increased YKL-40 in this population (**Figure 2e**) and has been reported in the
250 literature.²¹

251
252 Using random forest, six analytes with the highest relative importance (median permutation
253 importance > 10) for classifying samples as trauma vs control were MIF, TRAIL, and IL-29 (higher
254 in trauma) as well as TPO, IL-8, and IL-7 (lower in trauma) (**Figure 5c, Supplemental Figure 9,**

255 **7a)**. When predicting trauma designations, IL-1Ra, TARC, and Eotaxin-2 were those with the
256 greatest importance in distinguishing lesser (level 4) from life-threatening (level 1) trauma (**Figure**
257 **5d, Supplemental Figure 10b**).

258

259 *Pathway enrichment of systemically altered proteins in trauma patients*

260

261 Changes to the systemically circulating proteins in trauma patients leads to potential alterations
262 in several signaling cascades and downstream functions (**Figure 5e**). By importing increased
263 (**Figure 5g**) and decreased (**Figure 5h**) proteins into the STRING database, we observed several
264 interactions that could generate a network of different downstream effects. Using gene ontology
265 (GO) enrichment, we found upregulation of pathways associated with the negative regulation of
266 IL-1-mediated signaling pathway and negative regulation of chronic inflammatory response which
267 correlates with general inflammatory immunosuppression (**Figure 1i**). Positive regulation of Th2
268 cell cytokine production has been associated with wound healing and scar tissue deposition and
269 was also significantly enriched via GO. In decreased protein GO enrichment, we found negative
270 effects on the regulation of TH17 cell lineage commitment, eosinophil chemotaxis, and NK cell
271 chemotaxis (**Figure 5j**).

272

273 **DISCUSSION**

274

275 While there has been significant research into cytokines and chemokines peripherally and within
276 cerebral spinal fluid of traumatic brain injury,²²⁻²⁶ less research has been focused on the broad
277 array of other traumatic injuries that present to trauma centers. This observational cohort provided
278 an opportunity to study a large and diverse trauma population, allowing us to characterize how
279 the immune system responds to different trauma-related factors. Some of the proteins we
280 detected have been observed individually in different tissue damage models, but few have been
281 evaluated systemically. The findings present implications for systemic trauma conditions such as
282 multi-organ dysfunction syndrome (MODS).

283

284 A robust upregulation of IL-10 was observed in trauma patients as previously described.^{6,27} IL-10
285 is an immunoregulatory protein that dampens immune responses and inhibits over-activation of
286 immune cells and self-reactivity. We found that IL-10 concentration was dependent upon the
287 location of injury, types of tissues injured, and source of injury. Patients presenting with combined
288 head/neck and torso injuries, those with internal soft tissue and bone injuries, and those injured

289 during a MVC exhibited higher IL-10 levels. These polytrauma patients suggest that core trauma
290 (torso/head), even if not a skin-breaking or penetrating wound, are associated with higher IL-10
291 and immunosuppression.

292

293 *Identification of a new biomarker predictor for patient survival*

294

295 IL-29 has not been previously associated with traumatic injury and we have shown its robust
296 induction after traumatic injury and increase in patients that survived trauma when compared to
297 those that died. Furthermore, when combining IL-29 concentrations with IL-10 data we developed
298 a ratio that has 100% sensitivity and 85% specificity for patient death after trauma that activated
299 a lower emergency department alert (less severe). Utilization of this ratio could inform patient care
300 by providing a two-analyte panel to predict high risk patients. As IL-29 is an IFN λ that shares the
301 IL-10 receptor beta chain (IL-10RB) with IL-10, the potential opposing roles of IL-10 and IL-29 in
302 post-trauma immunosuppression can be explored to uncover mechanisms of immune response
303 to trauma and unveil new therapeutics. Though IL-22 also utilizes the IL-10RB receptor chain and
304 IFN γ is an interferon, neither had the same pattern as IL-29 or IL-10 suggesting a unique
305 mechanism. If IL-29 is not only a correlate but also a causative agent in patient survival, these
306 insights may yield a useful cytokine-based therapeutic for patients. Unfortunately IL-29 is a
307 pseudogene in organisms used for mechanistic immunology studies and the other IFN λ that is
308 present in mice (IL-28) has unique roles from IL-29. Further work utilizing *in vitro* models may
309 provide some insight into mechanisms, highlighting the need for clinical study to identify mediators
310 of human responses that are lost in preclinical animal modeling. IL-29 is a pleiotropic cytokine
311 that is a player in cancer (regression and persistence), autoimmunity (remission and
312 establishment), and infectious diseases such as COVID-19.²⁸⁻³⁰ This is the first identification of
313 IL-29 having a role in traumatic injury, and this analyte is often left out of standard evaluations
314 making data mining in existing datasets difficult to leverage.

315

316 When exploring the data further we found a number of cytokines that were altered in survivors
317 versus those that died (**Supplemental Figure 11a**) with significant increases in IL-6 and M-CSF
318 in those that died (**Supplemental Figure 11b,c**) and increases in IL-29 and also IL-21 in survivors
319 (**Supplemental Figure 11d,e**). The correlations between the most significant differences also
320 changed (**Supplemental Figure 11d,e**) and predictive ratios could be generated with IL-29 and
321 IL-6, IL-10, IL-8, and M-CSF (**Supplemental Figure 11h-k**) with IL-6 and IL-10 having the best
322 separation between survivors and those that died. Random Forest machine learning confirmed

323 that IL-29 was an important indicator of patient survival along with IL-17A/F, IL-21, IL-3, IL-23,
324 TNFa, Gro-a, and IL-22, with mortality being predicted with 7 other cytokines including IL-6 and
325 M-CSF (**Supplemental Figure 11I**).

326

327 *Novel reporting of trauma-downregulated proteins*

328

329 Several proteins downregulated in our trauma samples have not been previously reported in the
330 literature in the context of human response to trauma, including IL-17E/IL-25, ENA-78, I-309, and
331 IL-12/IL23p40. Proteins from the IL-17 family are typically associated with autoimmune responses
332 and fibrosis.³¹⁻³³ Here, we observed a previously unreported downregulation of IL-17E/IL-25 in
333 traumatic injury compared to healthy controls. The proportion of samples with undetectable IL-
334 17B was higher in trauma patients versus healthy controls. Patients who experienced either bone
335 wounds alone, or both bone wounds and penetrating soft tissue wounds exhibited a significant
336 decrease in IL-17E/IL-25. These findings suggest the involvement of bone injury in
337 downregulation of IL-17E/IL-25 and possible relationship between severe injuries and prevention
338 of autoimmune related cascades in the early stages of post-trauma responses.

339

340 ENA-78 (CXCL5), involved in neutrophil activation and chemotaxis, is upregulated in rat models
341 of hepatectomy³⁴ and ischemia reperfusion injury.³⁵ We observed a significant decrease in ENA-
342 78 concentration in trauma patients compared to healthy controls. However, those experiencing
343 only internal soft tissue wounds had ENA-78 levels consistent with healthy controls. This suggests
344 that internal soft tissue wounds may not induce robust neutrophil recruitment, possibly because
345 these wounds do not necessarily involve exposure to pathogens. While ENA-78 is involved in
346 neutrophil chemotaxis, I-309 (CCL1) mediates monocyte chemotaxis and was decreased in
347 trauma patients across all wound variables. Additionally, decreases in IL-12/IL-23p40 (promotes
348 macrophage and dendritic cell migration³⁶) were observed for all injury mechanisms, wound
349 types, and wound locations. The consistent downregulation of these cytokines across multiple
350 variables indicates a reduction of myeloid migration in the early hours after traumatic injury.

351

352 *Novel reporting of trauma-upregulated proteins*

353

354 Of the proteins we found to be upregulated in trauma, the levels of IL-29 and MIP-5 have not been
355 previously characterized for human trauma patients. IL-29 is known to have antiviral and antitumor
356 properties, and its role in the context of infections has been extensively studied. IL-29 levels have

357 been shown to be elevated in patients with periodontitis,³⁷ breast cancer patients with
358 periodontitis,³⁸ and those infected with HPV,³⁹ and to be decreased in patients with Type 2
359 Diabetes Mellitus (T2D) and patients with diabetic foot ulcers.⁴⁰ IL-29 was upregulated across all
360 variables, suggesting that IL-29 may be upregulated to prevent the co-occurrence of viral or other
361 infections after traumatic injuries. MIP-5, a T-cell and monocyte chemokine that has also been
362 found to be elevated in T2D patients, was also upregulated in trauma patients compared to the
363 control. However, the concentration of MIP-5 was dependent on injury mechanism, with a
364 significantly higher concentration in patients experiencing falls or GSW relative to healthy
365 samples, but not those experiencing MVC or stabbings. MIP-5 was also significantly higher in
366 patients who had combined internal and penetrating wounds, but not for those having either in
367 isolation. Thus, while IL-29 appears to be upregulated in trauma samples across multiple
368 variables, MIP-5 levels appear to depend on specific injury mechanisms. These trends do not
369 appear to be a result of trauma level, as neither MIP-5 nor IL-29 levels were significantly altered
370 in the most severe (level 1) compared to least severe (level 4) injuries.

371

372 *Sex and age-based alterations of immunity in trauma patients*

373

374 Due to the large size of our trauma cohort, we were able to evaluate the correlation of sex and
375 age with immune response to trauma. Patient sex had relatively little association with protein
376 levels with two exceptions: IL-8 and MIF. Female trauma patients had higher levels of these two
377 proteins than male trauma patients, while in healthy females compared to healthy males, these
378 protein concentrations were lower. Sex-specific effects on both IL-8 and MIF levels have been
379 previously reported.⁴¹⁻⁴⁵ Our observation that sex-specific IL-8 and MIF levels in trauma patients
380 exhibit an opposite trend from what is observed in healthy controls indicates that a disruption of
381 the immune system due to traumatic injury can also lead to a disruption of sex-specific immune
382 responses. This should be taken into account for the development of therapeutics that incorporate
383 knowledge of sex-specific immune responses.

384

385 Despite the large age range of the trauma patients, we observed significant correlations of age
386 with concentration of proteins including ones previously reported in the literature^{21,46-55} along with
387 several that were not significant in published data but reached significance in ours.^{46,56} Age-
388 related increases in CTACK, I-309, IL-22, IL-2ra, IL-8, IL-9, MCP-2, MIP-1a, MIP-3a, MIP-3b, and
389 MIP-5 have not previously been described. The majority of these proteins are involved in immune
390 cell chemotaxis with gene ontology analysis on proteins upregulated with age having 7 of 15 top

391 enriched pathways involved chemotaxis or cell migration (**Supplemental Figure 12**). ENA-78,
392 Gro-a, IL-16, and TRAIL decreased with age which has not been previously reported. TRAIL
393 induces cell death and can be produced by regulatory T cells that are known to decrease in
394 number with age. ENA-78 and Gro-a both have chemotactic activity for neutrophils, while IL-16
395 stimulates migration of eosinophils, monocytes, and CD4+ lymphocytes. These observations
396 align with previous reports of attenuated neutrophil and lymphocyte chemotaxis with age.⁵⁷⁻⁵⁹
397 These data further highlight immune complexity where a cascade of proteins that may have
398 overlapping functions can be differentially altered in response to factors such as age or traumatic
399 injury. Additional study is warranted to explore the immunological component to frailty commonly
400 observed following injuries sustained by geriatric patients.

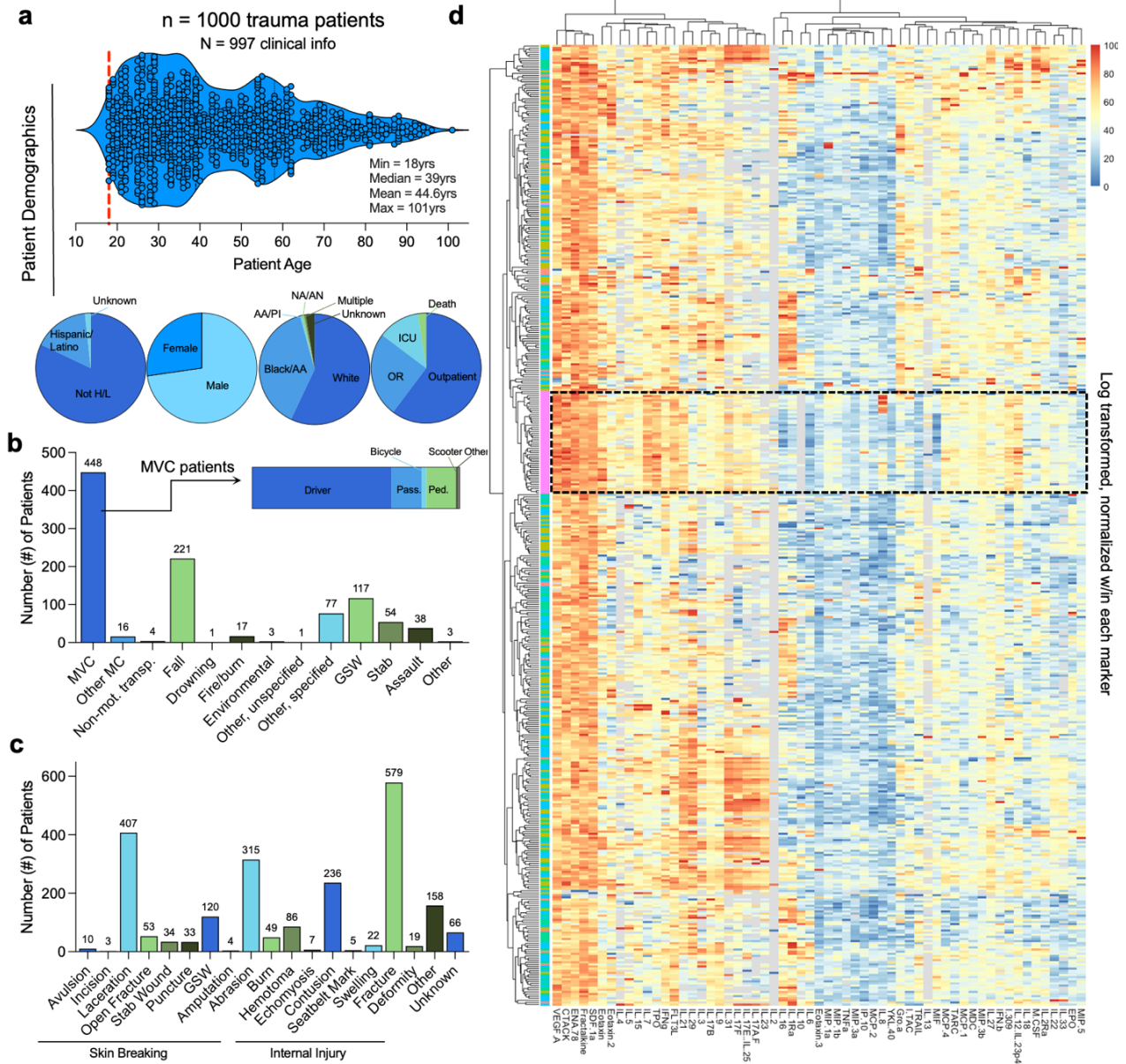
401
402 In addition to our primary findings, we also explored several differences of interest for continued
403 investigation. The co-incidence of viral infection in trauma patients was associated with variations
404 of their immune profile. Given the strong induction of proteins that are regulatory or can act in
405 regulatory manners (IL-10, IL-29, IL-6, IL-1Ra), the negative correlation of severe trauma with the
406 ability to fight off infections like pneumonia, and post-acute sequelae of both infections and
407 trauma, these data support future studies on the networked role of responses to pathogens and
408 traumatic injury. Prior studies revealed distinct patterns of inflammatory biomarkers that
409 distinguish blunt trauma patients with nosocomial infections from those without infections.⁶⁰ In
410 addition to infectious disease, a small subset of trauma patients in our cohort reported co-incident
411 cancer which was associated with higher IL-10 levels (**Supplemental Figure 13**). Increased IL-
412 10 has been associated with worse outcomes in both tumor clearance and trauma recovery,^{61,62}
413 highlighting the need for a deeper understanding of how traumatic injuries can differentially impact
414 specific patient populations.

415
416 Investigation into the human immune response to trauma yields insight for evaluating downline
417 patient outcomes, understanding the basic biologic principles of the human response to traumatic
418 injury, and identifying targets for therapeutics. In this study we were able to confirm several
419 findings in the literature on the effects of traumatic injury on protein levels, examine factors such
420 as trauma location and trauma level that affected these proteins, and identify new mediators of
421 the systemic human inflammatory response to injury.

422
423 While our cohort provides a broad look at various trauma factors, it is important to note some
424 limitations with these data. Convenience sampling of participants from trauma sites could

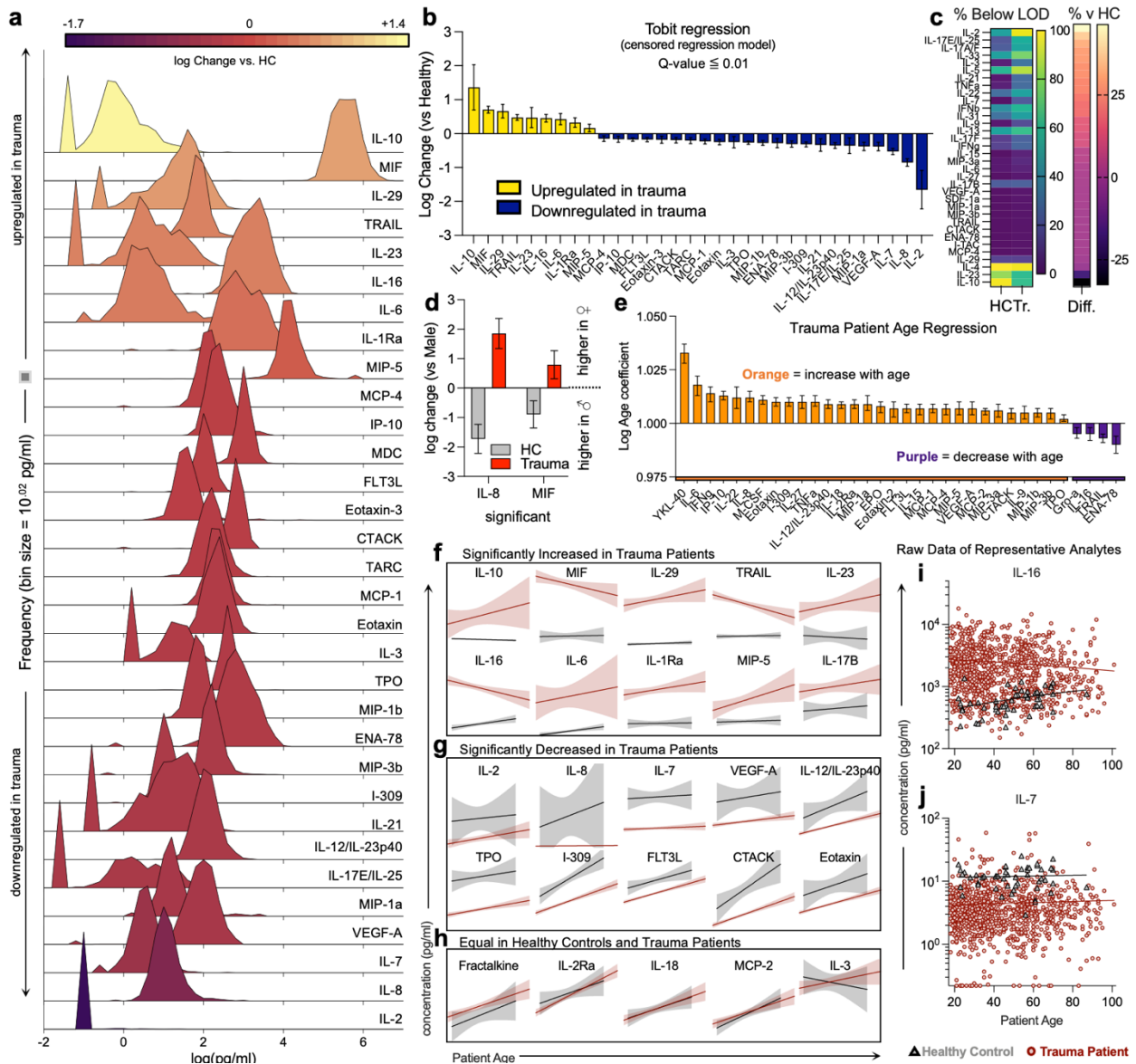
425 introduce unknown bias into our cohort for which we were unable to control, but it is not possible
426 to do a randomized clinical trial of traumatic injury. As we did not have complete injury severity
427 score (ISS) information, we compared trauma levels which are associated with severity but can
428 be subjective (as with other metrics). Despite this, there was a strong correlation between trauma
429 level and risk of death (Trauma Level 1 (0.09, 95 % CI: 0.06-0.016) versus Trauma Level 4 (0.02,
430 95 % CI: 0.01 – 0.05)). In addition to severity, as this study evaluates acute response to trauma,
431 a focused longitudinal study of timepoints hours, days, and weeks after traumatic injury would
432 provide an understanding of temporal immune dynamics. We were also limited in our ability to
433 independently assess lower incidence trauma (e.g. severe burns) and co-morbidities due to
434 smaller numbers. A deeper evaluation of the different immune responses in non-trauma controls
435 with varied comorbidities (e.g., cancer) and more specific trauma cohorts is needed to to
436 deconvolute the intricate interactions of trauma and human diseases. Despite these limitations,
437 we believe this is generally overcome with the large and diverse cohort.

438
439 This study has identified novel trauma-associated immune changes in humans that are altered
440 based on age, sex, trauma source, injury location, and trauma level. These differences can inform
441 future mechanistic studies and clinical evaluations based on the function of different proteins that
442 we have detected. While infectious diseases can take days to mount and potentially cause tissue
443 damage, traumatic injuries cause a large disruption in homeostasis in seconds. As such, our lab
444 and others have been interested in the prevention of damaging autoimmunity after acute tissue
445 damage caused by traumatic injury. In this study, alterations in TRAIL, IL-29, IL-23, IL-17, IL-1Ra,
446 IL-10, IL-6 and others involved in promoting or inhibiting autoimmune like conditions show a
447 strong connection between immunologic self-reactivity and response to traumatic injury that must
448 be investigated further. Identification of IL-29 as a biomarker for survival from traumatic injury can
449 directly affect clinical care and is a topic for future evaluation, albeit with limitations in mechanistic
450 studies due to the absence of this protein in mice. Potential for IL-29 to be adopted as a
451 therapeutic can also be investigated to determine if this is not only a correlate of survival but also
452 a potential route for intravenous administration in at-risk patients.



455

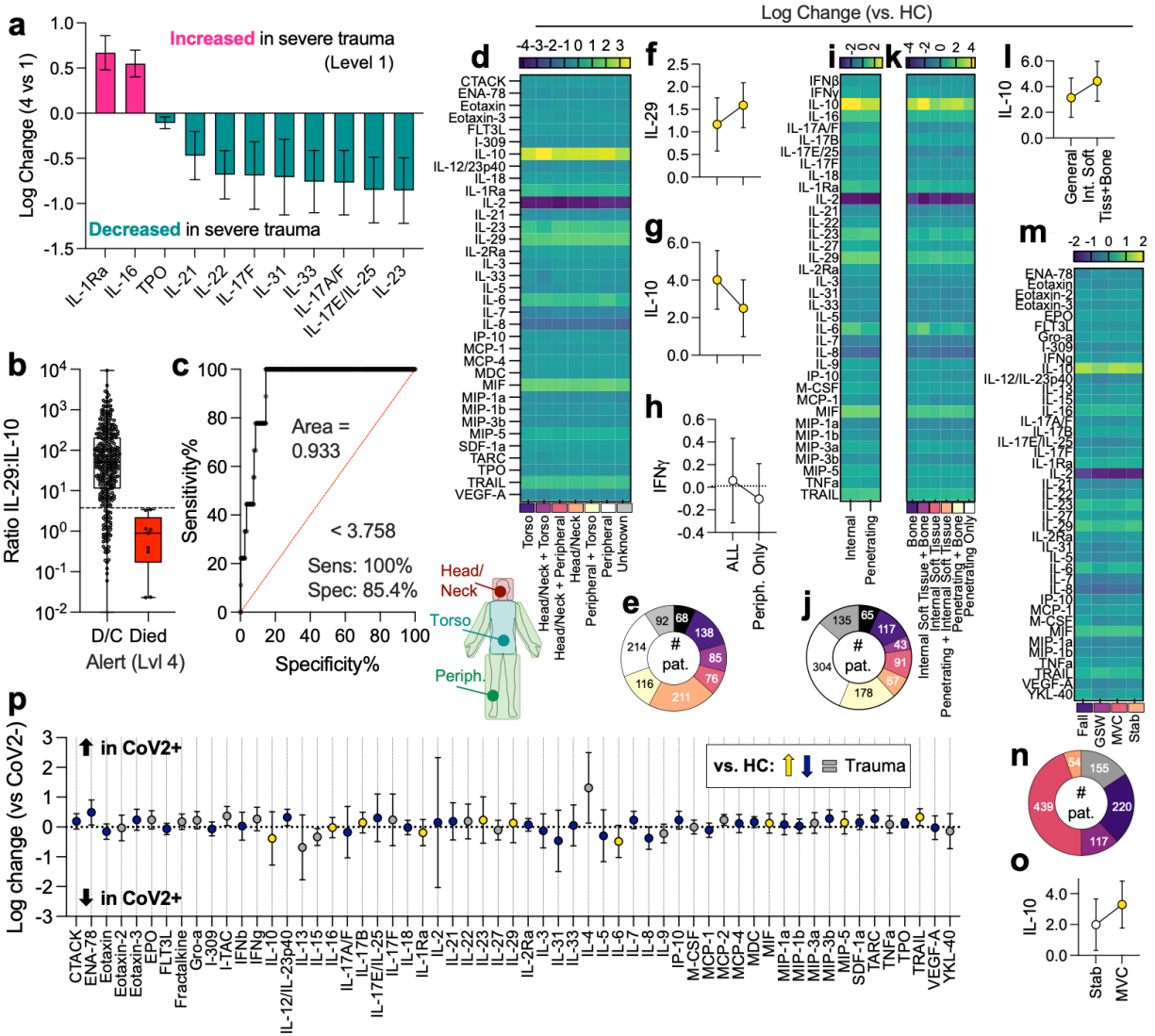
456 **Figure 1 | Patient demographics and overall plasma immune protein profiles.** (a) Top: Age distribution
 457 of trauma patients. Min = 18 yrs, Max = 101 yrs, Median = 36. Bottom: Demographics of patients and trauma
 458 outcome. Biologic sex, patient-reported race & ethnicity, trauma outcome. (b) Source of trauma. (c) Type
 459 of trauma. (d) Heatmap of protein profiling in N = 1000 trauma patients and N = 50 healthy controls (HC).
 460 HC are outlined in black dashed box; data are analyte concentration log transformed and normalized (0 to
 461 100) within marker.



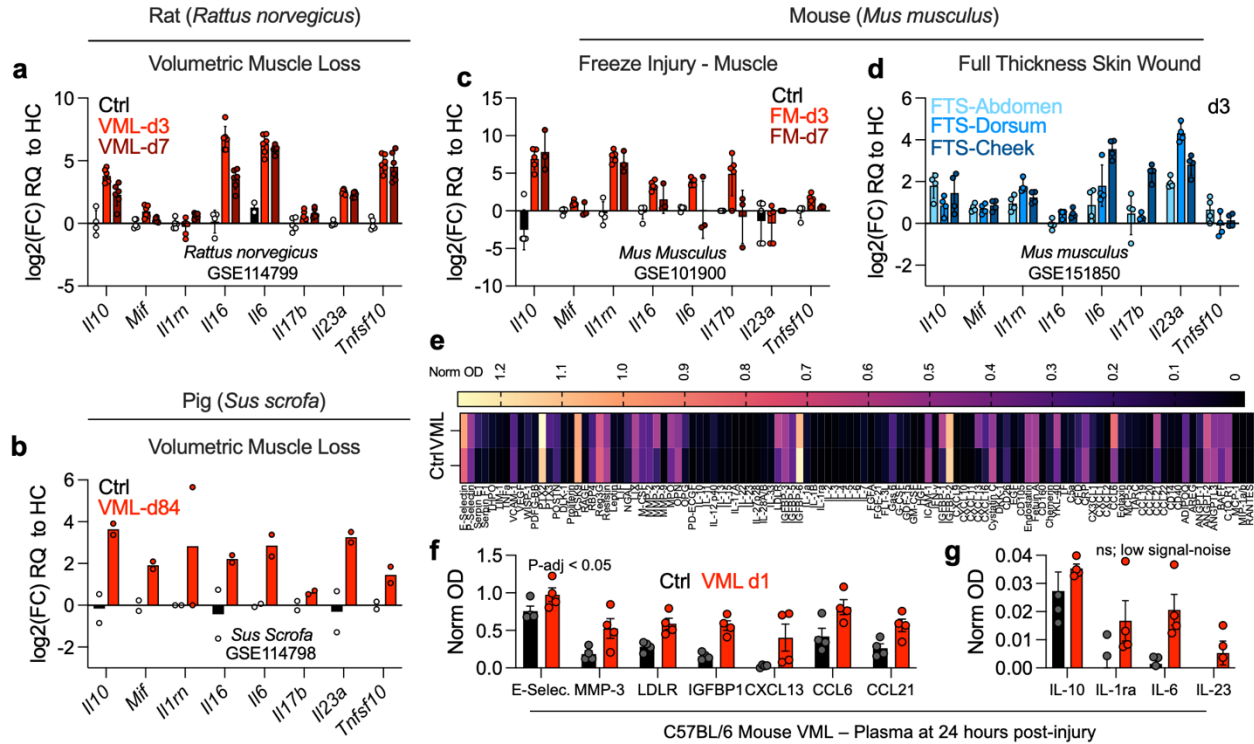
462

463 **Figure 2 | Differential immune responses in trauma patients are altered by age and sex of patient.**

464 (a) Distribution of significantly altered proteins in trauma patients compared to healthy controls. (b) Tobit
 465 regression of significantly altered proteins. Yellow = increased in trauma, Blue = decreased in trauma. Data
 466 are log fold change (versus healthy control, HC). (c) Proteins that are different in percent (%) below limit of
 467 detection (LOD) in trauma patients versus HC (left) and % difference between HC and Trauma (Tr). (d) Sex
 468 dimorphisms in trauma patients (grey = HC, red = trauma). (e) Age coefficients of proteins tested in trauma
 469 patients (orange = positive correlation with age, purple = negative correlation with age). (f-h) Examples of
 470 simple linear regression of age and protein concentration for markers significantly (Tobit) (f) increased, (g)
 471 decreased, (h) or equal in trauma patients compared to HC. Raw data of representative analytes that are
 472 (i) increased and (j) decreased in trauma patients compared to healthy control. (f – j) Red = trauma patient,
 473 black/grey = healthy control. Error bars = with 95% confidence intervals.



474
 475 **Figure 3 | Trauma level, location, and co-incidence of viral infections cause alterations in immune**
 476 **profiles and reveal IL-29 as a new predictor of patient survival.** (a) Protein differences in severe (1)
 477 vs less severe (4) traumas. (b) IL-29 to IL-10 ratio in survivors versus those that died from less severe
 478 trauma. (c) ROC of IL-29:IL10 ratio as a predictor of patient survival. (d) Log change of protein versus
 479 healthy control (HC) by injury location. Purple = decreased in trauma, Yellow = increased. (e) Incidence of
 480 injury locations. (f-h) Cytokine concentration in patients with injuries in all locations versus peripheral only
 481 for (f) IL-29, (g) IL-10, and (h) IFN γ . Data are log change \pm 95% CI. (i) Patients with internal vs penetrating
 482 injuries. (j) Incidence of injury types. (k) Log change by injury types. (l) IL-10 change compared to HC in all
 483 injuries vs patients with internal soft tissue injury + bone injury. (m) Protein profile by trauma source. (n)
 484 Incidence of trauma source. (o) IL-10 change vs HC in stab vs MVC patients. (p) Log change in SARS-
 485 CoV-2+ trauma patients vs SARS-CoV-2- patients. Yellow = increased in general trauma patients vs HC,
 486 Blue = decreased in general trauma patients compared to HC, grey = proteins not significantly different
 487 between trauma patients and HC. Data are log change \pm 95% CI.



488

489

490

491

492

493

494

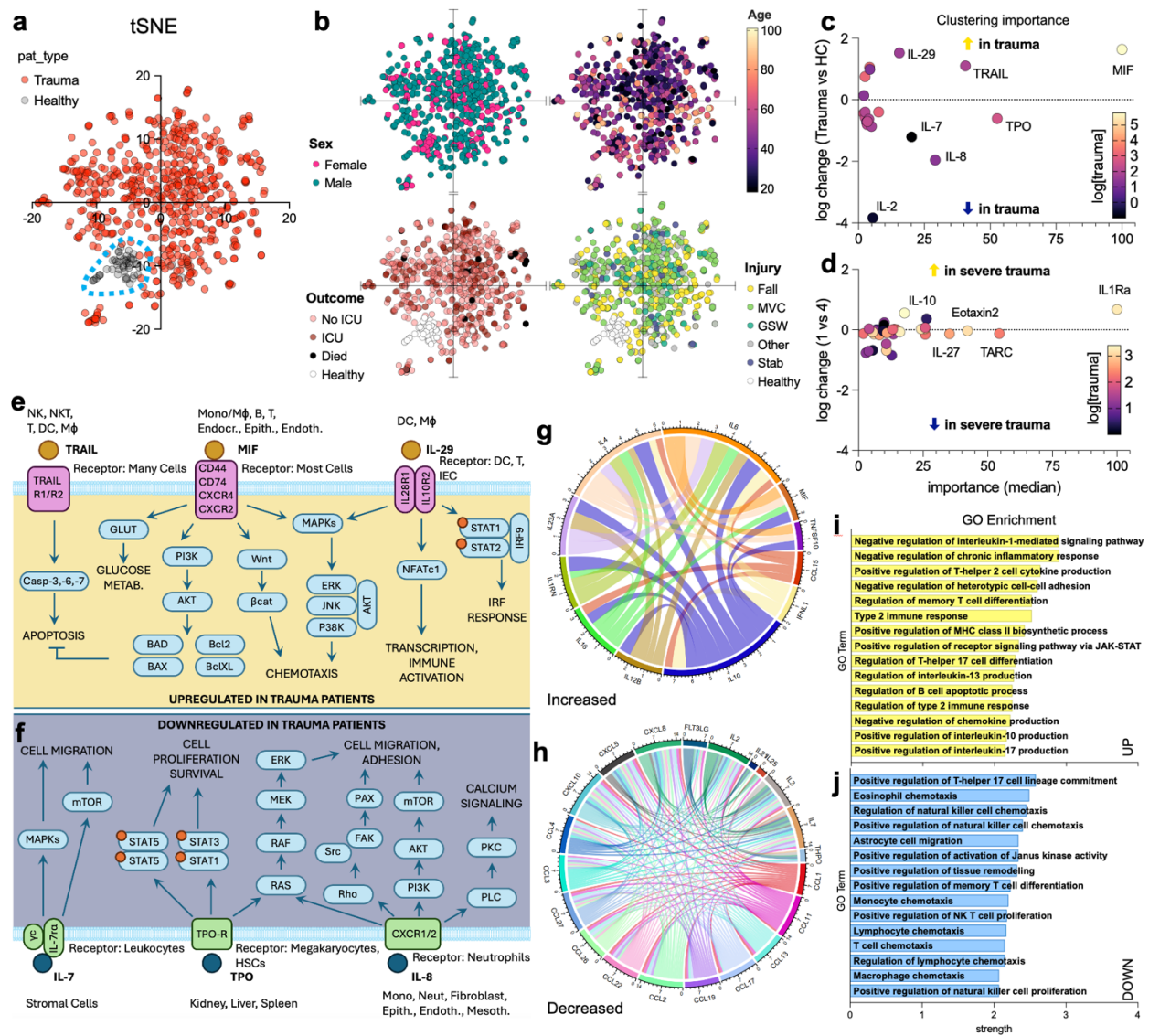
495

496

497

498

Figure 4 | Comparative animal models for trauma study with human injury response evaluation. (a-d) RNAseq data mining for human trauma upregulated markers in local tissue from (a) Rat volumetric muscle loss (VML), n = 4 - 6; GSE114799,¹⁷ (b) Pig volumetric muscle loss (VML) n = 2; GSE114798,¹⁸ (c) Mouse freeze injury of muscle (FM), n = 3 - 5; GSE101900,¹⁹ and (d) Mouse full thickness skin wound (FTS), n = 4; GSE151850.²⁰ Data are fold change over uninjured/sham controls ± SD. (e) Mean normalized optical density (OD) from mouse cytokine/chemokine profiling blot of plasma at 24 hours post VML, n = 4. (f) Values from (e) that are significantly different from control (p-adj < 0.05, ANOVA with Tukey post-hoc correction for multiple comparisons). (g) Values from (e) that were present in human dataset but had low signal to noise ratio (low concentration) in mouse blot. Data are mean ± SEM, n = 4.



499
 500 **Figure 5 | Machine learning identifies patterns of conserved responses to traumatic injury.** (a) t-
 501 Stochastic neighbor embedding of protein concentrations in trauma patients (red) versus healthy controls
 502 (black/grey). (b) Labeling of t-SNE diagrams by variables including sex (pink = female, teal = male), age
 503 (graded color scale, black = 18yrs, light yellow = 101 yrs), treatment outcome (white = healthy, light pink =
 504 outpatient/no ICU, red = intensive care unit (ICU), black = death), and mechanism of injury (yellow = fall,
 505 green = motor vehicle crash (MVC), blue green = gunshot wound (GSW), grey = other, blue = stab, white
 506 = healthy). (c-d) Median importance from machine learning clustering to distinguish (c) healthy control from
 507 trauma patients, and (d) severe (designation 1) versus alert (designation 4) trauma patients by blood profile.
 508 (e-f) Proteins (e) upregulated or (f) downregulated in trauma patients by machine learning and their
 509 signaling cascades from receptors. (g-h) STRING diagram of interactions of proteins (g) increased or (h)
 510 decreased in trauma patients (determined via Tobit regression). (i-j) STRING database gene ontology
 511 enrichment of pathways from (i) upregulated and (j) downregulated proteins

512 **ACKNOWLEDGMENTS**

513
514 We would like to thank the patients whose samples were used in this study- without their
515 contributions the research would not be possible. We would also like to thank Vanathi Sundaresan
516 for assistance in laboratory organization, Sabrina DeStefano for assistance in collecting mouse
517 blood samples, Andrea Lucia Alfonso for assistance in organizing human samples, and Dr. Daniel
518 Chertow for helpful discussions. This work was funded by the intramural research programs of
519 the National Institute of Biomedical Imaging and Bioengineering, and National Institute of Allergy
520 and Infectious Diseases, National Institutes of Health (NIH). Disclaimer: The contents of this
521 publication are the authors' sole responsibility and do not necessarily reflect the views, opinions,
522 or policies of the NIH, the Uniformed Services University of the Health Sciences, the Department
523 of Health and Human Services (HHS), or the Department of Defense. Mentioning trade names,
524 commercial products, or organizations does not imply endorsement by the U.S. Government. This
525 work was prepared by a military or civilian employee of the US Government as part of the
526 individual's official duties and therefore is in the public domain and does not possess copyright
527 protection (public domain information may be freely distributed and copied; however, as a cour-
528 tesy it is requested that the authors be given an appropriate acknowledgement).

529
530 **CONFLICT OF INTEREST**

531
532 The authors declare no conflict of interest.

533
534 **MATERIALS AND METHODS**

535
536 *Clinical study and sample collection*

537
538 Clinical study and sample collection proceeded as previously described⁷ (See Report No. DOT
539 HS 813 399). Briefly, samples were collected by convenience sampling in the time period of May
540 9th 2020 to January 26th 2021 during an ongoing National Highway Traffic Safety Administration
541 (NHTSA) study of drug prevalence among adult (age 18+) trauma victims who had severe enough
542 injuries for transport by EMS and had a trauma team activated/alerted at selected Level-1 trauma
543 centers. These specimens were collected from patients who were already having blood drawn as
544 part of medical treatment at the trauma centers and were made available for research purposes.
545 Serological analyses were conducted on excess plasma samples from the study when possible.

546 The study was conducted in accordance with Good Clinical Practice, the principles of the Belmont
547 Report, and HHS regulations enumerated under 45 CFR 46. Five of the sites had the
548 Chesapeake/Advarra Institutional Review Board as the central IRB (Advarra Protocol #
549 Pro00022129), and the Jacksonville, FL site had the University of Florida Institutional Review
550 Board as the IRB of record. De-identified samples and other data were included in the study
551 through IRB-approved waivers of consent and authorization. Medical records or other secondary
552 sources such as emergency medical services run reports and crash reports provided the
553 demographic information. De-identified samples were then sent on dry ice overnight to NIH and
554 stored at -80°C until processing. De-identified healthy volunteer blood samples were collected
555 under clinical protocol NCT0000128 and NIH IRB-approved protocol 99-CC-0168 at the National
556 Institute of Allergy and Infectious Diseases, National Institutes of Health, Bethesda MD.

557

558 *Patient and Injury Categorization*

559

560 Based on clinical data, patients were sorted into a variety of subcategories for further analysis.
561 Patients were sorted into one of five injury mechanisms: fall, gunshot/shotgun wound (GSW), motor
562 vehicle crash (MVC), stabbing, or other. Among all injuries, the injury location or locations were
563 also identified for each patient, with injuries categorized as occurring in the head/neck area, torso,
564 peripheral regions, a combination of two of these, or in unknown locations. Regardless of injury
565 mechanism or location, patient injuries were also sorted into the categories of internal (no broken
566 skin), or penetrating (breaking the skin). A more granular understanding of the effects of tissue
567 types on immune response was also obtained by sorting injuries based on tissue involvement,
568 where the major tissue types were categorized as bone, internal soft tissue, and penetrating
569 (breaking the skin), or a combination of two of these. Due to a lack of complete injury severity
570 scores for all patients, the injury severity was analyzed using clinically-assessed trauma levels 1-
571 4 as a proxy, where level 1 was the worst trauma level.

572

573 *Electrochemiluminescence detection of protein analytes*

574

575 Samples were processed and tested on a custom 59-plex MesoScale Diagnostics
576 electrochemiluminescence assay as per manufacturer's instructions. Protein concentrations were
577 calculated off of standard curves.

578

579 *Volumetric muscle loss model*

580
581 Six (6) week-old C57BL/6J female mice (Jackson Labs) were received and equilibrated in the
582 animal facility for 7 days prior to surgery. The day preceding surgery mice were anesthetized
583 under 4% isoflurane in oxygen and maintained under 2% isoflurane prior to removal of hair from
584 the legs using an electric razor followed by depilatory cream. Remaining depilatory cream was
585 removed with a gauze pad with 70% isoflurane and mice were returned to a clean cage until the
586 following day. The day of surgery mice were anesthetized under 4% isoflurane and maintained
587 under 2% isoflurane diluted in oxygen for the duration of the procedure (roughly 6 minutes).
588 Perioperatively, mice received 0.5 mg/ml Buprenorphine ER (ZooPharm) subcutaneously
589 followed by eye lubricant and surgical site was sterilized with three successive rounds of betadine
590 followed by 70% isopropanol. A 1 cm incision was made in the skin overlying the quadriceps
591 muscle (quad) followed by the underlying fascia. A 30 mg portion of muscle was resected from
592 the midbelly of the quad resulting in a 3mm x 3mm injury. Skin was closed using 3 – 4 wound
593 clips (7 mm, Roboz) and the procedure was repeated on the contralateral leg. Mice were kept
594 warm during the procedure through hand warmers separated by sterile drapes. After surgery,
595 animals received 100 ul warm surgical saline and were monitored under a heat lamp until
596 ambulatory and grooming. All animal research was supervised and approved by the NIH Clinical
597 Center ACUC under protocol NIBIB23-01.

598
599 *Mouse cytokine and chemokine protein array*

600
601 Peripheral blood was collected from the mouse peri-euthanasia through a submandibular bleed.
602 Serum (100 µl) was loaded onto a Proteome Profiler Mouse XL Cytokine and Chemokine Array
603 (R&D Systems) as per manufacturer's instructions. Briefly, assay membranes were incubated
604 with blocking buffer for one hour before addition of samples. Each sample was diluted to a final
605 volume of 1.5 mL prior to addition, and samples were incubated on the membranes overnight at
606 4 °C on a rocking platform. Membranes were washed with wash buffer on a rocking platform three
607 times (10 minutes each), and then incubated with the diluted detection antibody cocktail for 1 hour
608 at room temperature on a rocking platform. Membranes were then incubated with horse radish
609 peroxidase-conjugated streptavidin for 30 minutes at room temperature on a rocking platform
610 shaker, washed three times, and incubated with the Chemi Reagent Mix for 1 minute. Images
611 were acquired using a BioRAD Gel Imager, and quantification was conducted using ImageJ.

612
613 *STRING Analysis*

614
615 The lists of upregulated and downregulated proteins were searched for in STRING, a database
616 of known and predicted protein-protein interactions.⁶³ The combined score for interactions
617 between pairs of proteins was exported and used to generate the chord diagrams in R. Lists of
618 functional enrichments, in the form of Biological Processes (Gene Ontology), were exported and
619 the 15 pathways with the lowest false discovery rates (FDR) were selected for each list of proteins.
620 These were then sorted by strength.

621
622 *Data Analysis and Statistics*

623
624 Each analyte was subject to lower and upper limits of detection (LOD) of the assay, both for
625 healthy control and trauma samples. Values above the LOD were set to the analyte-specific assay
626 upper LOD + 10%. Values below the lower LOD were set to zero for data visualization and were
627 censored for regression analysis. All protein concentrations were log-transformed.

628
629 To assess the relationship between protein concentration and independent variables of interest,
630 we chose to use Tobit regression, which estimates linear relationships when the outcome is
631 censored from one direction, in this case, left censoring at the lower limit of detection. Using the
632 AER package in R,⁶⁴ we constructed individual Tobit models for each of the 59 proteins and the
633 following independent variables: patient type (trauma or healthy control), age (mean-centered),
634 sex, COVID-19 infection status, injury mechanism, trauma level, general and specific wound
635 types, and wound location. Age and sex models controlled for patient type; all others were
636 univariable. Exponentiated regression coefficients and 95% confidence intervals are reported as
637 percent change in protein concentration per unit increase in the independent variable. When
638 reporting whether an association between a protein and predictor was statistically significant, we
639 separately computed q-values for the probability that the association was positive or negative⁶⁵
640 and controlled the FDR at 0.01 for each of the comparisons.

641
642 Exploratory cluster analysis of normalized protein concentrations was conducted using Van der
643 Maaten's Barnes-Hut implementation of t-Distributed Stochastic Neighbor Embedding (t-SNE) in
644 R using the default settings in the Rtsne package.⁶⁶ Random Forest from the tidymodels⁶⁷ R
645 package was employed to determine the relative importance of features for classifying trauma vs
646 control. All continuous variables (age, protein concentrations) were normalized, patient sex was
647 one-hot encoded. For each variable in the model, we calculated permutation importance across

648 10 model iterations. Relative importance was determined by dividing each variable's permutation
649 importance score by the largest importance score of all variables for each of the 10 iterations,
650 then multiplying by 100. See the **Supplemental Materials** and Mayer et al for more information.⁶⁸
651 Tobit regression, cluster analysis, and random forest analyses were conducted using R version
652 4.2.x.⁶⁹

653
654 IL-29:IL-10 concentration ratio was generated as a ratio (pg/ml:pg/ml) of the two cytokines and
655 the resulting ratio was compared in level 4 trauma activation patients via receiver operating curve
656 (ROC) in GraphPad Prism v10.2.2 comparing those that were discharged to home (D/C, n = 343)
657 versus those that died (n = 9). Patients that were discharged to any other location were excluded
658 from analysis (rehab, correctional facility, hospice, left against medical advice). Any values that
659 were stated as below limit of detection were replaced with the concentration of the lowest point
660 on the standard curve or lowest detected sample, whichever was smaller. Exploratory analysis of
661 cancer data was conducted on GraphPad Prism with undetected values treated as previously
662 stated and comparisons made without corrections due to the exploratory nature of the evaluation.

663 664 **DATA AND CODE AVAILABILITY**

665
666 Data and abbreviated clinical information will be made available in supplement after peer review.
667 Not all detailed clinical information gathered during the study will be made available to prevent
668 de-identification of samples and participants. Some values may be changed to ensure privacy of
669 data while maintaining ability to complete any necessary meta-analyses.

670
671 Statistical comparisons with resulting estimates, p-values, and q-values, along with designation
672 of significance will be made available in supplement along with code used for these analyses (via
673 GitHub) after peer review.

674 675 **REFERENCES**

676
677 1. Munford, R. S. & Pugin, J. Normal Responses to Injury Prevent Systemic Inflammation and
678 Can Be Immunosuppressive. *Am J Respir Crit Care Med* **163**, 316–321 (2001).

- 679 2. Schwab, J. M., Zhang, Y., Kopp, M. A., Brommer, B. & Popovich, P. G. The paradox of
680 chronic neuroinflammation, systemic immune suppression, autoimmunity after traumatic
681 chronic spinal cord injury. *Experimental Neurology* **258**, 121–129 (2014).
- 682 3. Faist, E. *et al.* Prostaglandin E2 (PGE2)-dependent Suppression of Interleukin α (IL-2)
683 Production in Patients with Major Trauma. *The Journal of Trauma and Acute Care Surgery*
684 **27**, (1987).
- 685 4. Lord, J. M. *et al.* The systemic immune response to trauma: an overview of pathophysiology
686 and treatment. *The Lancet* **384**, 1455–1465 (2014).
- 687 5. Sousa, A. *et al.* Measurement of Cytokines and Adhesion Molecules in the First 72 Hours
688 after Severe Trauma: Association with Severity and Outcome. *Disease Markers* **2015**, 1–8
689 (2015).
- 690 6. Neidhardt, R. *et al.* Relationship of Interleukin-10 Plasma Levels to Severity of Injury and
691 Clinical Outcome in Injured Patients: *The Journal of Trauma: Injury, Infection, and Critical*
692 *Care* **42**, 863–871 (1997).
- 693 7. Volpin, G. *et al.* Cytokine Levels (IL-4, IL-6, IL-8 and TGF β) as Potential Biomarkers of
694 Systemic Inflammatory Response in Trauma Patients. *International Orthopaedics (SICOT)*
695 **38**, 1303–1309 (2014).
- 696 8. Cai, J. *et al.* Protective/reparative cytokines are suppressed at high injury severity in human
697 trauma. *Trauma Surg Acute Care Open* **6**, e000619 (2021).
- 698 9. Sadtler, K., Collins, J., Byrne, J. D. & Langer, R. Parallel evolution of polymer chemistry and
699 immunology: Integrating mechanistic biology with materials design. *Advanced Drug Delivery*
700 *Reviews* **156**, 65–79 (2020).
- 701 10. Ngo, T. B. *et al.* SARS-CoV-2 Seroprevalence and Drug Use in Trauma Patients from Six
702 Sites in the United States. Preprint at <https://doi.org/10.1101/2021.08.10.21261849> (2021).
- 703 11. Thomas, F. D. *et al.* *Drug and Alcohol Prevalence in Seriously and Fatally Injured Road*
704 *Users Before and During the COVID-19 Public Health Emergency.* (2020).

- 705 12. F. D. Thomas *et al.* *Alcohol and Drug Prevalence Among Seriously or Fatally Injured*
706 *Road Users.* (2022).
- 707 13. DO Ricke & C Aguilar. Multiscale analysis of a regenerative therapy for treatment of
708 volumetric muscle loss injury. *Gene Expression Omnibus* (2018).
- 709 14. PV.018_L_PT2 RNA-Seq. *Gene Expression Omnibus* (2018).
- 710 15. DO Ricke & C Aguilar. In vivo Monitoring of Transcriptional Dynamics After Lower-Limb
711 Muscle Injury Enables Quantitative Classification of Healing. *Gene Expression Omnibus*
712 (2017).
- 713 16. Tanya J Shaw. Mouse 1 Back Wound [M1BW]. *Gene Expression Omnibus* (2020).
- 714 17. Aguilar, C. A. *et al.* Multiscale analysis of a regenerative therapy for treatment of
715 volumetric muscle loss injury. *Cell Death Discovery* **4**, 33 (2018).
- 716 18. Greising, S. M. *et al.* Unwavering Pathobiology of Volumetric Muscle Loss Injury. *Sci*
717 *Rep* **7**, 13179 (2017).
- 718 19. Aguilar, C. A. *et al.* In vivo Monitoring of Transcriptional Dynamics After Lower-Limb
719 Muscle Injury Enables Quantitative Classification of Healing. *Sci Rep* **5**, 13885 (2015).
- 720 20. Usansky, I. *et al.* A developmental basis for the anatomical diversity of dermis in
721 homeostasis and wound repair. *The Journal of Pathology* **253**, 315–325 (2021).
- 722 21. Johansen, J. S. *et al.* High serum YKL-40 level in a cohort of octogenarians is
723 associated with increased risk of all-cause mortality. *Clinical and Experimental Immunology*
724 **151**, 260–266 (2008).
- 725 22. Crawford, A. M. *et al.* Concomitant chest trauma and traumatic brain injury, biomarkers
726 correlate with worse outcomes. *J Trauma Acute Care Surg* **87**, S146–S151 (2019).
- 727 23. Dyhrfort, P. *et al.* Monitoring of Protein Biomarkers of Inflammation in Human Traumatic
728 Brain Injury Using Microdialysis and Proximity Extension Assay Technology in Neurointensive
729 Care. *Journal of Neurotrauma* **36**, 2872–2885 (2019).

- 730 24. Mousessian, A. S. *et al.* CXCR7, CXCR4, and Their Ligand Expression Profile in
731 Traumatic Brain Injury. *World Neurosurgery* **147**, e16–e24 (2021).
- 732 25. Lok Ting Lau & Albert Cheung-Hoi Yu. Astrocytes Produce and Release Interleukin-1,
733 Interleukin-6, Tumor Necrosis Factor Alpha and Interferon-Gamma Following Traumatic and
734 Metabolic Injury. *Journal of Neurotrauma* **18**, (2004).
- 735 26. Meabon, J. S. *et al.* Chronic elevation of plasma vascular endothelial growth factor-A
736 (VEGF-A) is associated with a history of blast exposure. *Journal of the Neurological Sciences*
737 **417**, 117049 (2020).
- 738 27. Timmermans, K. *et al.* Plasma levels of danger-associated molecular patterns are
739 associated with immune suppression in trauma patients. *Intensive Care Med* **42**, 551–561
740 (2016).
- 741 28. Kelm, N. E. *et al.* The role of IL-29 in immunity and cancer. *Critical Reviews in*
742 *Oncology/Hematology* **106**, 91–98 (2016).
- 743 29. Wang, J., Huang, A., Xu, W. & Su, L. Insights into IL-29: Emerging role in inflammatory
744 autoimmune diseases. *J Cellular Molecular Medi* **23**, 7926–7932 (2019).
- 745 30. Fallah Vastani, Z. *et al.* Interleukin-29 profiles in COVID-19 patients: Survival is
746 associated with IL-29 levels. *Health Science Reports* **5**, e544 (2022).
- 747 31. Huangfu, L., Li, R., Huang, Y. & Wang, S. The IL-17 family in diseases: from bench to
748 bedside. *Sig Transduct Target Ther* **8**, 402 (2023).
- 749 32. Riedel, J.-H. *et al.* IL-17F Promotes Tissue Injury in Autoimmune Kidney Diseases.
750 *JASN* **27**, 3666–3677 (2016).
- 751 33. Majumder, S. & McGeachy, M. J. IL-17 in the Pathogenesis of Disease: Good Intentions
752 Gone Awry. *Annu. Rev. Immunol.* **39**, 537–556 (2021).
- 753 34. Colletti, L. M., Kunkel, S. L., Green, M., Burdick, M. & Strieter, R. M. HEPATIC
754 INFLAMMATION FOLLOWING 70% HEPATECTOMY MAY BE RELATED TO UP-
755 REGULATION OF EPITHELIAL NEUTROPHIL ACTIVATING PROTEIN-78. *Shock* **6**, (1996).

- 756 35. Colletti, L. M. *et al.* Chemokine expression during hepatic ischemia/reperfusion-induced
757 lung injury in the rat. The role of epithelial neutrophil activating protein. *J. Clin. Invest.* **95**,
758 134–141 (1995).
- 759 36. Cooper, A. M. & Khader, S. A. IL-12p40: an inherently agonistic cytokine. *Trends in*
760 *Immunology* **28**, 33–38 (2007).
- 761 37. Shivaprasad, B. M. & Pradeep, A. R. Effect of non-surgical periodontal therapy on
762 interleukin-29 levels in gingival crevicular fluid of chronic periodontitis and aggressive
763 periodontitis patients. *Disease Markers* **34**, (2013).
- 764 38. Salahuddin Jasim, S., Department of Basic Science in oral microbiology, College of
765 Dentistry, University of Baghdad, Baghdad, Iraq, Ibrahim Taha, Ğ., & Department of Basic
766 Science in oral microbiology, College of Dentistry, University of Baghdad, Baghdad, Iraq.
767 Role of type III Interferon (IL-29) on HSV-1 infection in breast cancer patients suffering from
768 periodontitis and receiving chemotherapy. *ijbd* **16**, 85–95 (2023).
- 769 39. Lotfi, W. *et al.* Serum level of Interleukin 29 in verruca vulgaris: Case control study.
770 *Fayoum University Medical Journal* **3**, 32–35 (2019).
- 771 40. Aya Refat, E. & Zainab Hussein, A.-H. IL-24 AND IL-29 IN T2DM WITH AND WITHOUT
772 DIABETIC FOOT ULCERS. *achi* **30**, 103–119 (2022).
- 773 41. Gilliver, S. C., Ruckshanthi, J. P. D., Hardman, M. J., Nakayama, T. & Ashcroft, G. S. Sex
774 Dimorphism in Wound Healing: The Roles of Sex Steroids and Macrophage Migration
775 Inhibitory Factor. *Endocrinology* **149**, 5747–5757 (2008).
- 776 42. Kruse, J. L. *et al.* Inflammation and depression treatment response to electroconvulsive
777 therapy: Sex-specific role of interleukin-8. *Brain, Behavior, and Immunity* **89**, 59–66 (2020).
- 778 43. Kruse, J. L. *et al.* Depression treatment response to ketamine: sex-specific role of
779 interleukin-8, but not other inflammatory markers. *Transl Psychiatry* **11**, 167 (2021).

- 780 44. Da Pozzo, E., Giacomelli, C., Cavallini, C. & Martini, C. Cytokine secretion
781 responsiveness of lymphomonocytes following cortisol cell exposure: Sex differences. *PLoS*
782 *ONE* **13**, e0200924 (2018).
- 783 45. Kim, D. H. J. *et al.* Neonatal immune signatures differ by sex regardless of
784 neurodevelopmental disorder status: Macrophage migration inhibitory factor (MIF) alone
785 reveals a sex by diagnosis interaction effect. *Brain, Behavior, and Immunity* **111**, 328–333
786 (2023).
- 787 46. Larsson, A. *et al.* The effects of age and gender on plasma levels of 63 cytokines.
788 *Journal of Immunological Methods* **425**, 58–61 (2015).
- 789 47. Zhou, L. *et al.* Age-specific changes in the molecular phenotype of patients with
790 moderate-to-severe atopic dermatitis. *Journal of Allergy and Clinical Immunology* **144**, 144–
791 156 (2019).
- 792 48. Decker, M.-L., Gotta, V., Wellmann, S. & Ritz, N. Cytokine profiling in healthy children
793 shows association of age with cytokine concentrations. *Sci Rep* **7**, 17842 (2017).
- 794 49. Rea, I. M., McNerlan, S. E. & Alexander, H. D. TOTAL SERUM IL-12 AND IL-12p40, BUT
795 NOT IL-12p70, ARE INCREASED IN THE SERUM OF OLDER SUBJECTS; RELATIONSHIP
796 TO CD3+AND NK SUBSETS. *Cytokine* **12**, 156–159 (2000).
- 797 50. Gangemi, S. *et al.* Age-Related Modifications in Circulating IL-15 Levels in Humans.
798 *Mediators of Inflammation* **2005**, 245–247 (2005).
- 799 51. Ciaramella, A. *et al.* Effect of age on surface molecules and cytokine expression in
800 human dendritic cells. *Cellular Immunology* **269**, 82–89 (2011).
- 801 52. Lamparello, A. J., Namas, R. A., Abdul-Malak, O., Vodovotz, Y. & Billiar, T. R. Young and
802 Aged Blunt Trauma Patients Display Major Differences in Circulating Inflammatory Mediator
803 Profiles after Severe Injury. *Journal of the American College of Surgeons* **228**, 148-160e7
804 (2019).

- 805 53. Mansfield, A. S. *et al.* Normal ageing is associated with an increase in Th2 cells, MCP-1
806 (CCL1) and RANTES (CCL5), with differences in sCD40L and PDGF-AA between sexes.
807 *Clinical and Experimental Immunology* **170**, 186–193 (2012).
- 808 54. Bruunsgaard, H., SKINHÉJ, P., Pedersen, A. N., Schroll, M. & Pedersen, B. K. Ageing,
809 tumour necrosis factor-alpha (TNF-a) and atherosclerosis. *Clinical and Experimental*
810 *Immunology* (2000).
- 811 55. Ishiguro, A. *et al.* Age-related changes in thrombopoietin in children: reference interval
812 for serum thrombopoietin levels. *Br J Haematol* **106**, 884–888 (1999).
- 813 56. Shin, M. S. *et al.* Maintenance of CMV-specific CD8+ T cell responses and the
814 relationship of IL-27 to IFN- γ levels with aging. *Cytokine* **61**, 485–490 (2013).
- 815 57. Niwa, Y., Kasama, T., Miyachi, Y. & Kanoh, T. NEUTROPHIL CHROMOTAXIS,
816 PHAGOCYTOSIS AND PARAMETERS OF REACTIVE OXYGEN SPECIES IN HUMAN
817 AGING: CROSS-SECTIONAL AND LONGITUDINAL STUDIES. **44**, (1989).
- 818 58. Wenisch, C., Patruta, S., Daxböck, F., Krause, R. & Hörl, W. Effect of age on human
819 neutrophil function. *Journal of Leukocyte Biology* **67**, 40–45 (2000).
- 820 59. Martínez De Toda, I., Maté, I., Vida, C., Cruces, J. & De La Fuente, M. Immune function
821 parameters as markers of biological age and predictors of longevity. *Aging* **8**, 3110–3119
822 (2016).
- 823 60. Namas, R. A. *et al.* Temporal Patterns of Circulating Inflammation Biomarker Networks
824 Differentiate Susceptibility to Nosocomial Infection Following Blunt Trauma in Humans.
825 *Annals of Surgery* **263**, 191–198 (2016).
- 826 61. Baucom, M. R. *et al.* Predictive Value of Early Inflammatory Markers in Trauma Patients
827 Based on Transfusion Status. *Journal of Surgical Research* **291**, 691–699 (2023).
- 828 62. Rallis, K. S. *et al.* IL-10 in cancer: an essential thermostatic regulator between
829 homeostatic immunity and inflammation – a comprehensive review. *Future Oncology* **18**,
830 3349–3365 (2022).

- 831 63. Szklarczyk, D. *et al.* The STRING database in 2023: protein–protein association
832 networks and functional enrichment analyses for any sequenced genome of interest. *Nucleic*
833 *Acids Research* **51**, D638–D646 (2023).
- 834 64. Kleiber, C. & Zeileis, A. *AER: Applied Econometrics with R.* (2024).
- 835 65. Storey, J. D. The positive false discovery rate: a Bayesian interpretation and the q-value.
836 *Ann. Statist.* **31**, (2003).
- 837 66. Krijthe, J. H. Rtsne: T-Distributed Stochastic Neighbor Embedding using a Barnes-Hut
838 Implementation. (2015).
- 839 67. Kuhn, M. & Wickham, H. *Tidymodels: a collection of packages for modeling and*
840 *machine learning using tidyverse principles.*
- 841 68. Mayer, L. M. *et al.* Machine Learning in Infectious Disease for Risk Factor Identification
842 and Hypothesis Generation: Proof of Concept Using Invasive Candidiasis. *Open Forum*
843 *Infectious Diseases* **9**, ofac401 (2022).
- 844 69. R Core Team. *The R Project for Statistical Computing.* (2022).
- 845 70. Edward, A. & Regan, R. F. The Effects of Hemorrhage and Trauma on Interleukin 2
846 Production. *Arch Surg* **120**, (1985).
- 847 71. Shimonkevitz, R., Northrop, J., Harris, L., Craun, M. & Bar-Or, D. Interleukin-16
848 Expression in the Peripheral Blood and CD8 T Lymphocytes After Traumatic Injury: *The*
849 *Journal of Trauma: Injury, Infection, and Critical Care* **58**, 252–258 (2005).
- 850 72. Reikeras, O., Borgen, P., Reseland, J. E. & Lyngstadaas, S. P. Changes in serum
851 cytokines in response to musculoskeletal surgical trauma. *BMC Res Notes* **7**, 128 (2014).
- 852 73. Ertel, W. *et al.* Release of Anti-inflammatory Mediators after Mechanical Trauma
853 Correlates with Severity of Injury and Clinical Outcome: *The Journal of Trauma: Injury,*
854 *Infection, and Critical Care* **39**, 879–887 (1995).

- 855 74. Nualláin, E. M. Ó., Puri, P., Mealy, K. & Reen, D. J. Induction of Interleukin-1 Receptor
856 Antagonist (IL-1ra) Following Surgery Is Associated with Major Trauma. *Clinical Immunology*
857 *and Immunopathology* **76**, (1995).
- 858 75. Xu, Y. X., Wichmann, M. W., Ayala, A., Cioffi, W. G. & Chaudry, I. H. Trauma–
859 Hemorrhage Induces Increased Thymic Apoptosis While Decreasing IL-3 Release and
860 Increasing GM-CSF. *Journal of Surgical Research* **68**, 24–30 (1997).
- 861 76. Joshi, P. C., Poole, G. V., Sachdev, V., Zhou, X. & Jones, Q. Trauma patients with
862 positive cultures have higher levels of circulating macrophage migration inhibitory factor
863 (MIF). *Res Commun Mol Pathol Pharmacol.* **107**, (2000).
- 864 77. Zhang, Y.-P. *et al.* Pathway-Based Association Analyses Identified TRAIL Pathway for
865 Osteoporotic Fractures. *PLoS ONE* **6**, e21835 (2011).
- 866 78. Bastian, D., Tamburstuen, M. V., Lyngstadaas, S. P. & Reikerås, O. Local and systemic
867 chemokine patterns in a human musculoskeletal trauma model. *Inflamm. Res.* **58**, 483–489
868 (2009).
- 869 79. Grad, S. *et al.* Strongly Enhanced Serum Levels of Vascular Endothelial Growth Factor
870 (VEGF) after Poly-trauma and Burn. *cclm* **36**, 379–383 (1998).
- 871 80. Tian, G., Lu, J., Guo, H., Liu, Q. & Wang, H. Protective effect of Flt3L on organ structure
872 during advanced multiorgan dysfunction syndrome in mice. *Molecular Medicine Reports* **11**,
873 4135–4141 (2015).
- 874 81. Zhou, C. *et al.* FLT3/FLT3L-mediated CD103⁺ dendritic cells alleviates hepatic ischemia-
875 reperfusion injury in mice via activation of treg cells. *Biomedicine & Pharmacotherapy* **118**,
876 109031 (2019).
- 877 82. Lokwani, R. *et al.* Pro-regenerative biomaterials recruit immunoregulatory dendritic cells
878 after traumatic injury. *Nat. Mater.* **23**, 147–157 (2024).

- 879 83. Bagaria, V. *et al.* Predicting Outcomes After Blunt Chest Trauma—Utility of Thoracic
880 Trauma Severity Score, Cytokines (IL-1 β , IL-6, IL-8, IL-10, and TNF- α), and Biomarkers (vWF
881 and CC-16). *Indian J Surg* **83**, 113–119 (2021).
- 882 84. Hobisch-Hagen, P. *et al.* Low platelet count and elevated serum thrombopoietin after
883 severe trauma. *European J of Haematology* **64**, 157–163 (2000).
- 884 85. Eric I. Choe *et al.* Thrombocytosis After Major Lower Extremity Trauma: Mechanism and
885 Possible Role in Free Flap Failure. *Ann Plast Surg* **36**, 489–494.
- 886 86. Schofield, H. *et al.* Immature platelet dynamics are associated with clinical outcomes
887 after major trauma. *Journal of Thrombosis and Haemostasis* S1538783623008656 (2023)
888 doi:10.1016/j.jtha.2023.12.002.
- 889

SUPPLEMENTAL MATERIALS

890

891

892 **Traumatic injury characteristics and patient demographics shape the human systemic**
893 **immune response to injury**

894

895 Parinaz Fathi^{1,2}, Maria Karkanitsa¹, Adam Rupert³, Aaron Lin^{1,2}, Jenna Darrah⁴, F. Dennis
896 Thomas⁴, Jeffrey Lai⁵, Kavita Babu⁵, Mark Neavyn⁵, Rosemary Kozar⁶, Christopher Griggs⁷,
897 Kyle W. Cunningham⁸, Carl I. Schulman⁹, Marie Crandall¹⁰, Irini Sereti¹¹, Emily Ricotta^{12,13},
898 Kaitlyn Sadtler^{1*}

899

900 *correspondence to: kaitlyn.sadtler@nih.gov

901

902

903 **CONTENTS:**

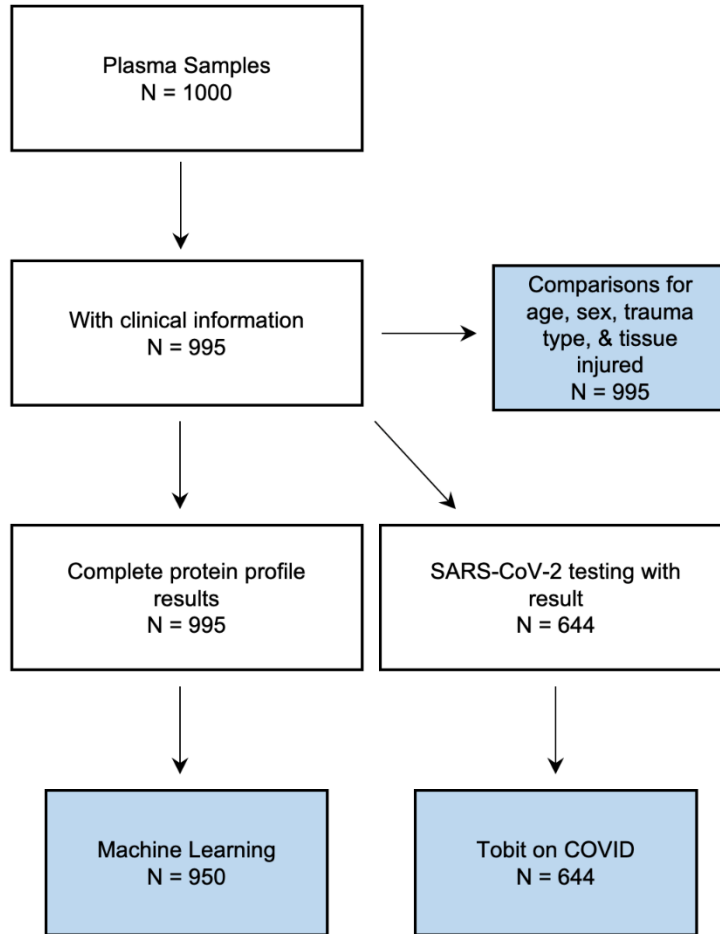
904

905 Supplemental Figures 1 – 13

906 Supplemental Tables 1 – 4

907 Supplemental Methods

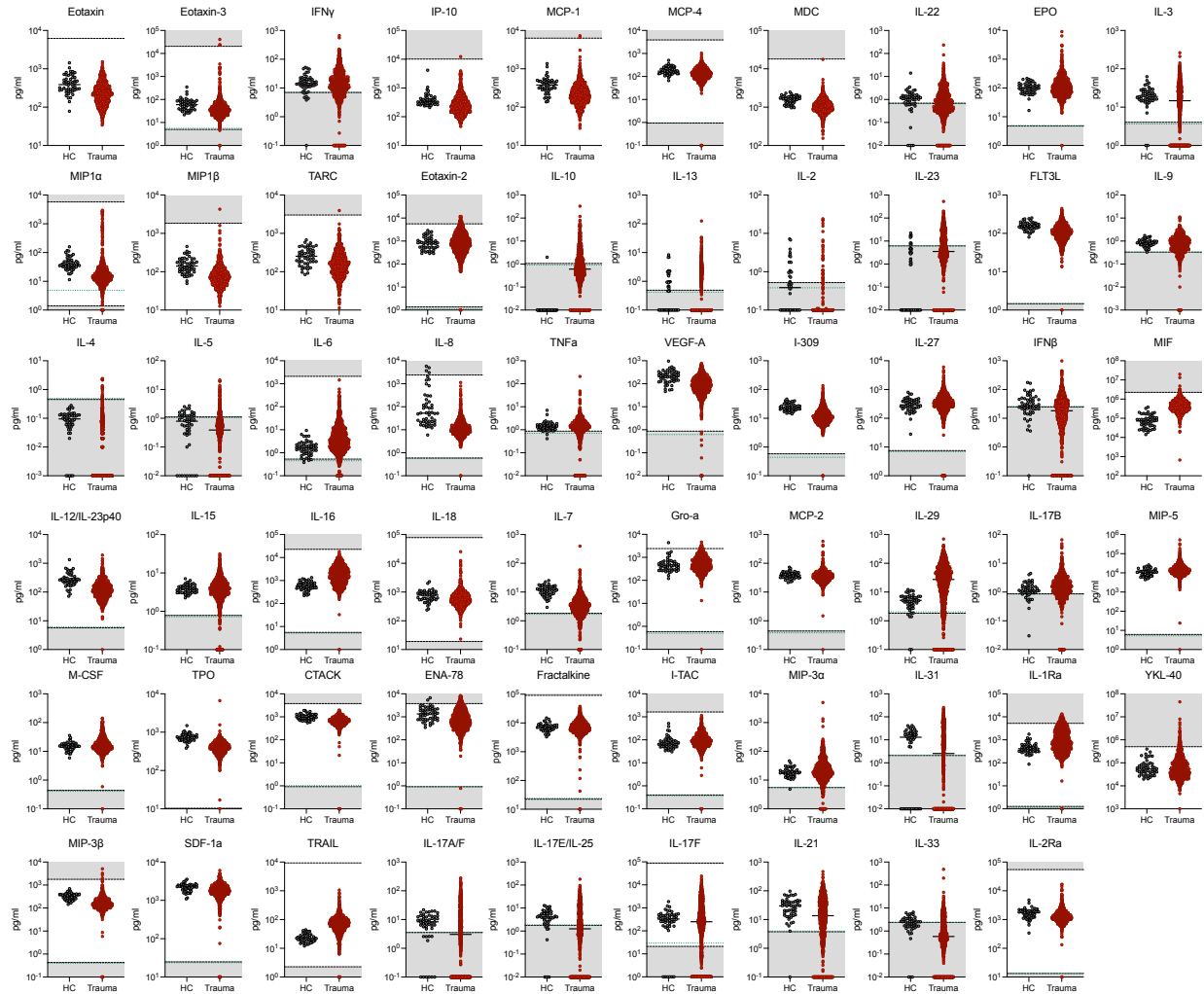
908 Supplemental Discussion



909

910 **Supplemental Figure 1 | Sample and data analysis workflow.** White boxes = sample input. Blue boxes

911 = analyses.



912

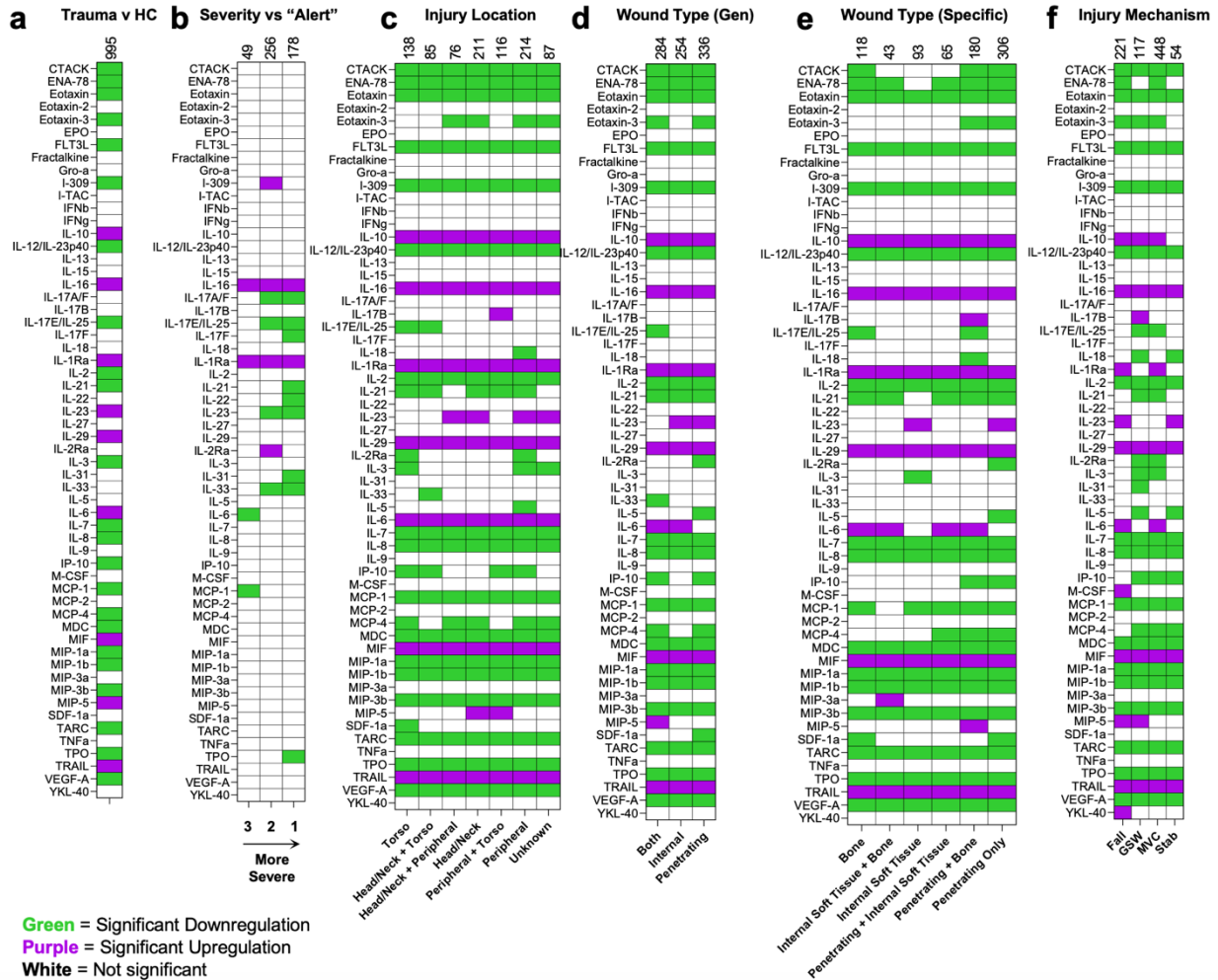
913

914 **Supplemental Figure 2 | Raw data display for all analytes measured in full cohort. Grey = Healthy**

915 **controls (HC); Red Points = Trauma Patients. Green line = threshold for healthy control samples, Black**

916 **line = threshold for trauma samples. Grey shaded areas = above or below highest known standard curve**

917 **value.**



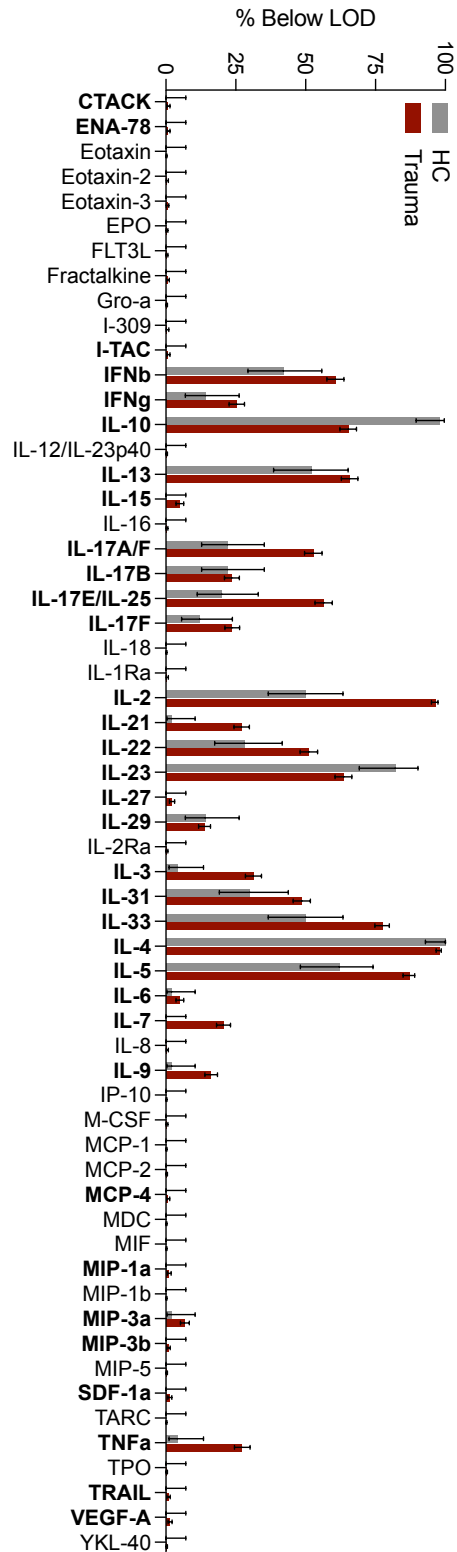
918

919

920

921

Supplemental Figure 3 | Binary Heatmaps of Significant Tobit Estimates. Heatmaps of statistically significant Tobit estimates for (a) Trauma versus healthy controls, (b) Different trauma levels compared to trauma level 1, (c) Injury location, (d) general wound type, (e) Specific wound type, and (f) injury mechanism.

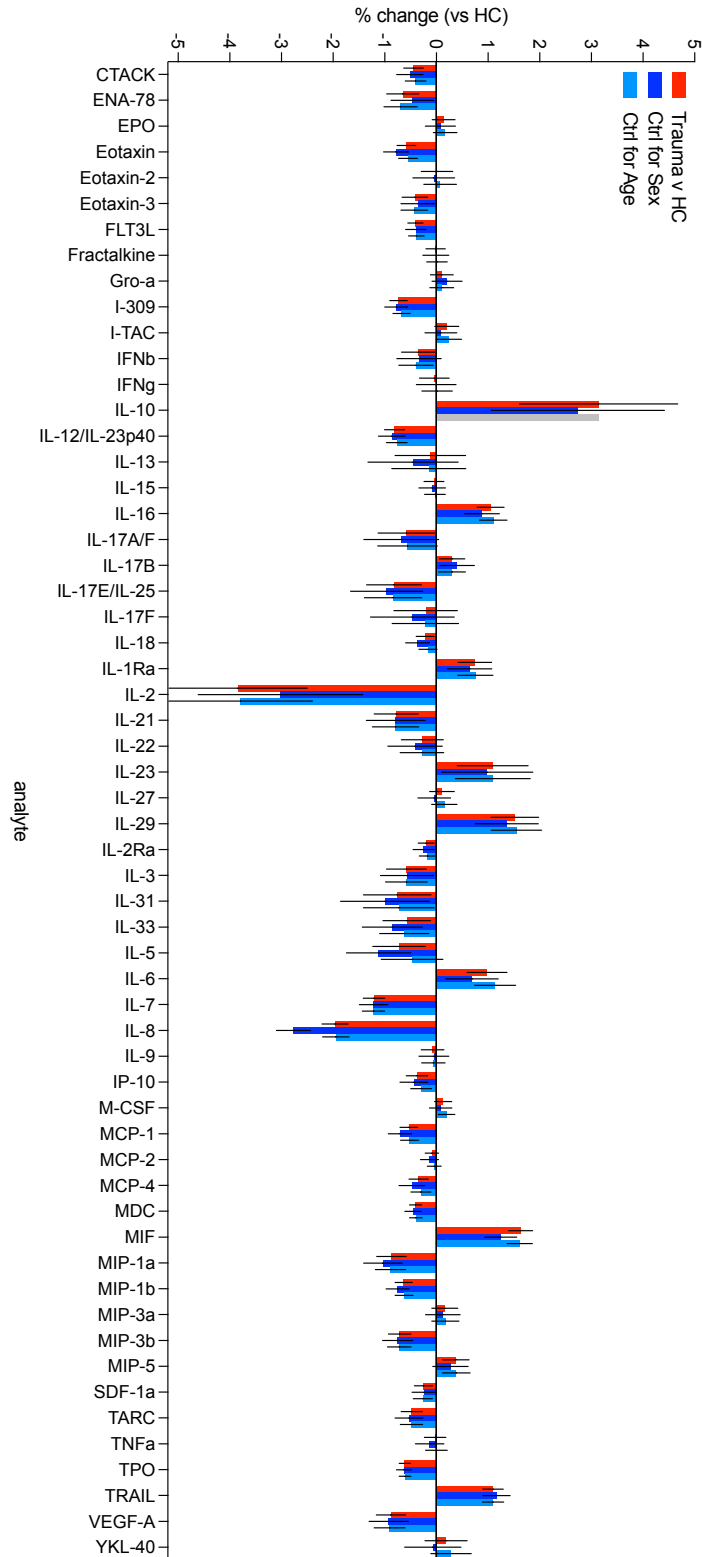


922

923 **Supplemental Figure 4 | Proportion below limit of detection.** Proportion of samples that were below the

924 limit of detection (LOD) for the assay. Grey = Healthy controls, Red = trauma patients. Data are % below

925 LOD \pm 95% confidence intervals (Wilson).

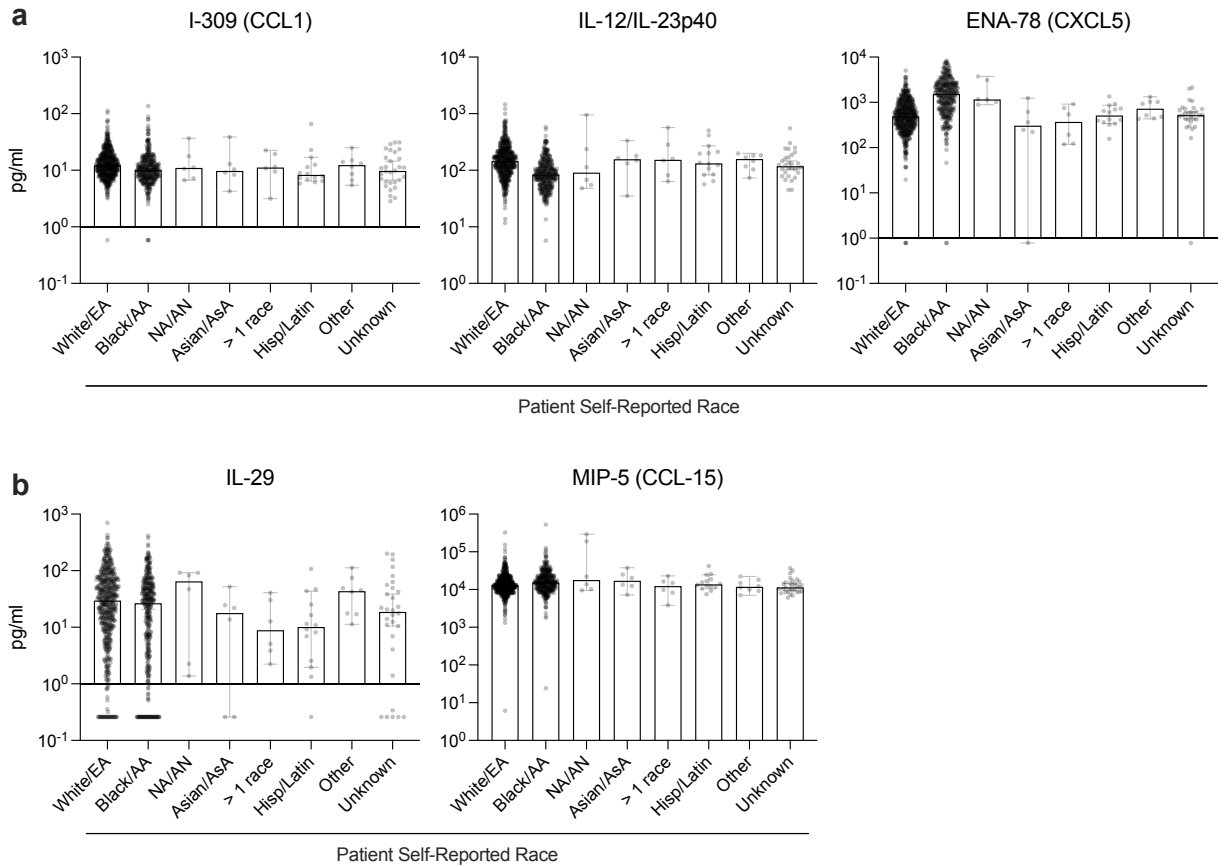


926

927 **Supplemental Figure 5 | Estimates of change from healthy volunteers when controlled for sex and**

928 **age.** Tobit estimates for trauma vs healthy controls (HC) with overall (red), controlled for sex (blue), and

929 controlled for age (light blue). Data are log change \pm 95% confidence intervals.



930

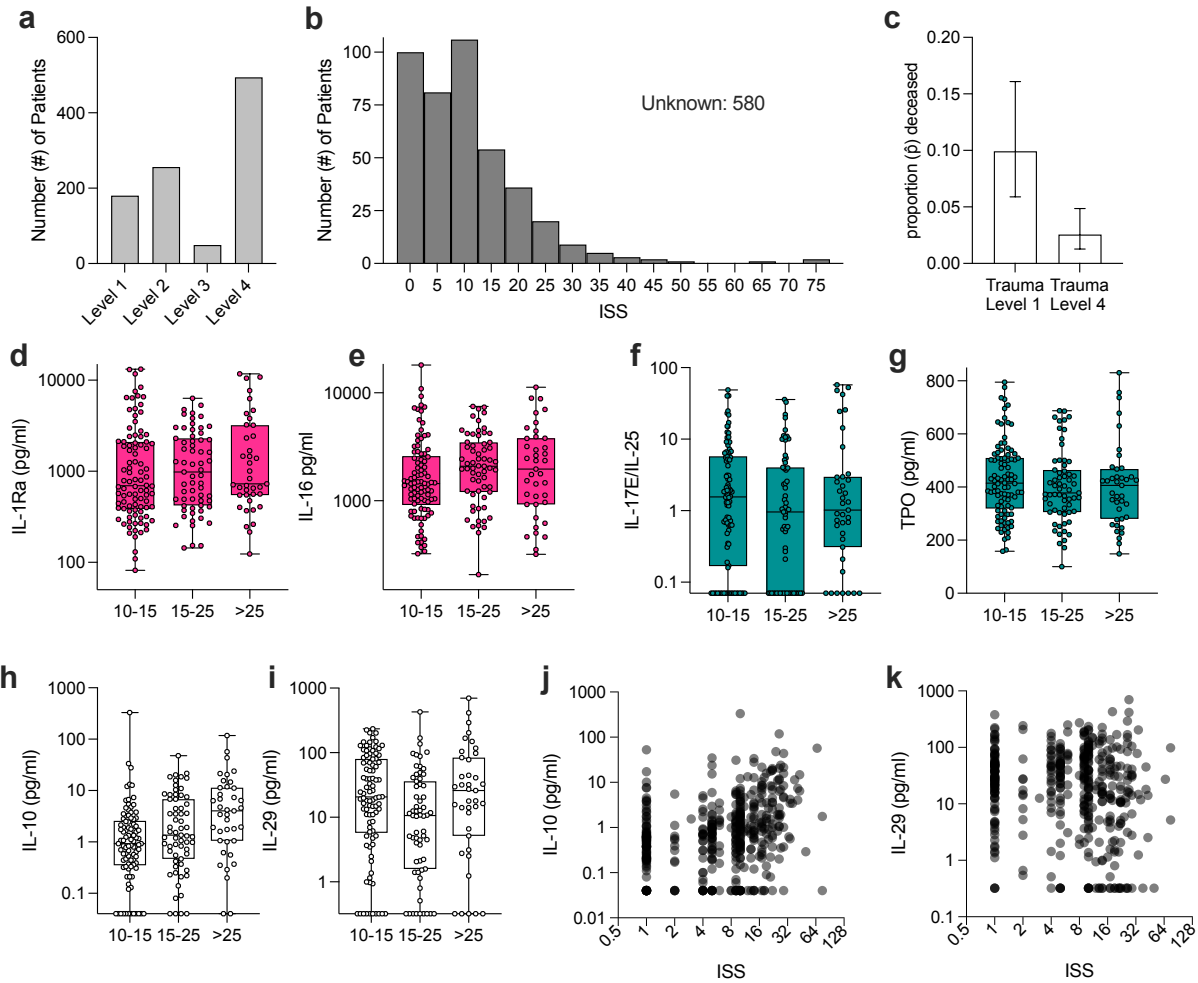
931 **Supplemental Figure 6 | Effect of self-reported age on concentration of cytokines and chemokines**

932 **in the blood of trauma patients.** (a) Novel downregulated proteins as a function of self-reported race. (b)

933 Novel upregulated proteins as a function of self-reported race. EA = European American, AA = African

934 American, NA/AN = Native American/Alaska Native, AsA = Asian American. Data are mean \pm standard

935 deviation.



936

937

Supplemental Figure 7 | Trauma level correlates with risk of death and protein concentration patterns are conserved with those that have an injury severity score (ISS).

938

(a) Number of patients categorized into different trauma levels (Level 1 = most severe trauma center activation, Level 4 = least severe trauma center activation).

939

(b) Distribution of ISS including those listed with ISS (including those with one injury).

940

(c) Probability of death when admitted under trauma activation level 1 versus trauma activation level 4.

941

(d – g) Distribution of cytokine/chemokine concentration of upregulated (d, e) IL-1Ra and IL-16 respectively, and downregulated (f, g) IL-17E/IL-25 and TPO respectively, proteins as determined by Level 1 versus Level 4 concentration.

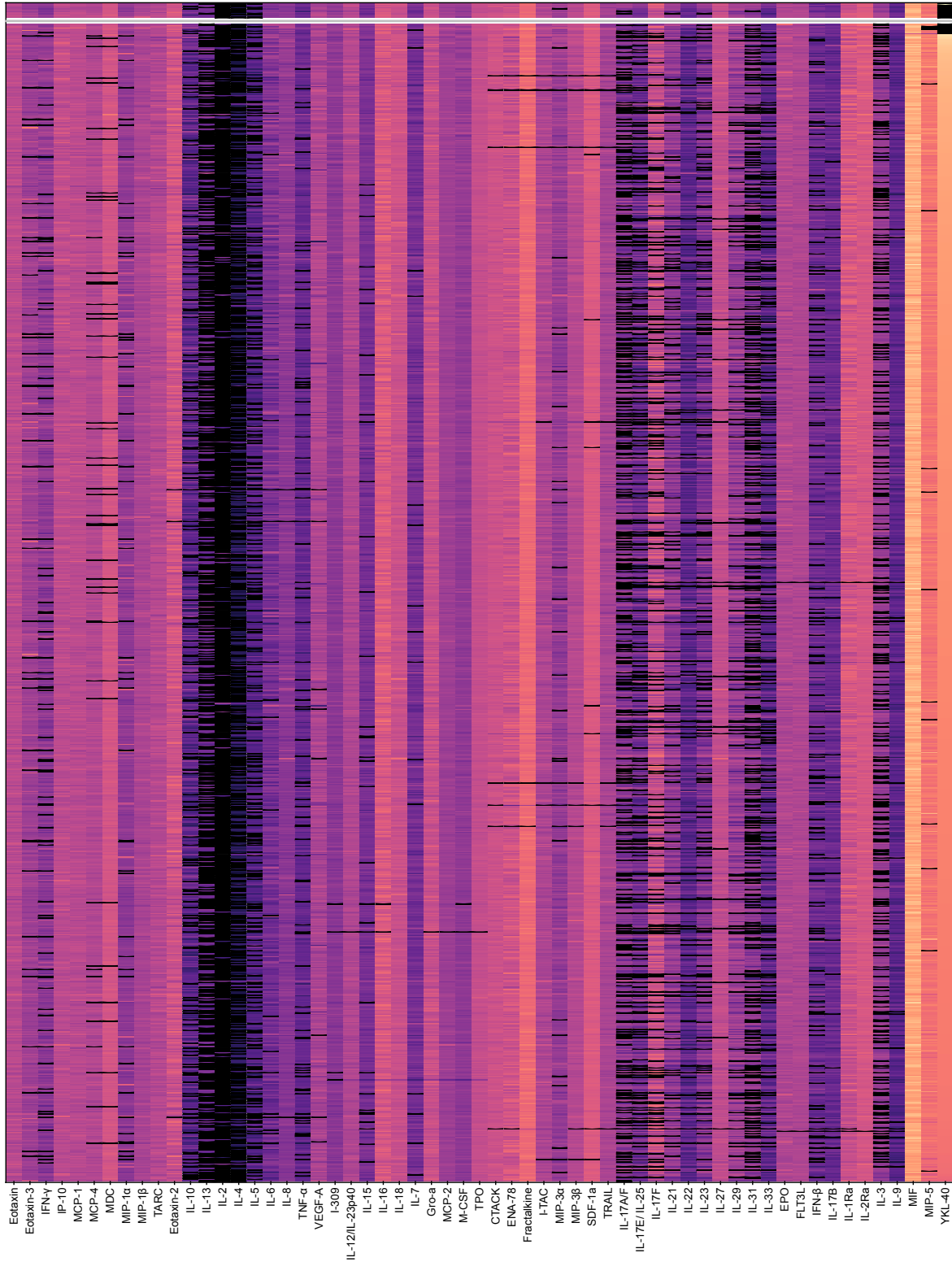
942

(h, i) Concentration of (h) IL-10 and (i) IL-29 by ISS level and (j-k) Correlation of (j) IL-10 and (k) IL-29 concentrations as a function of ISS.

943

944

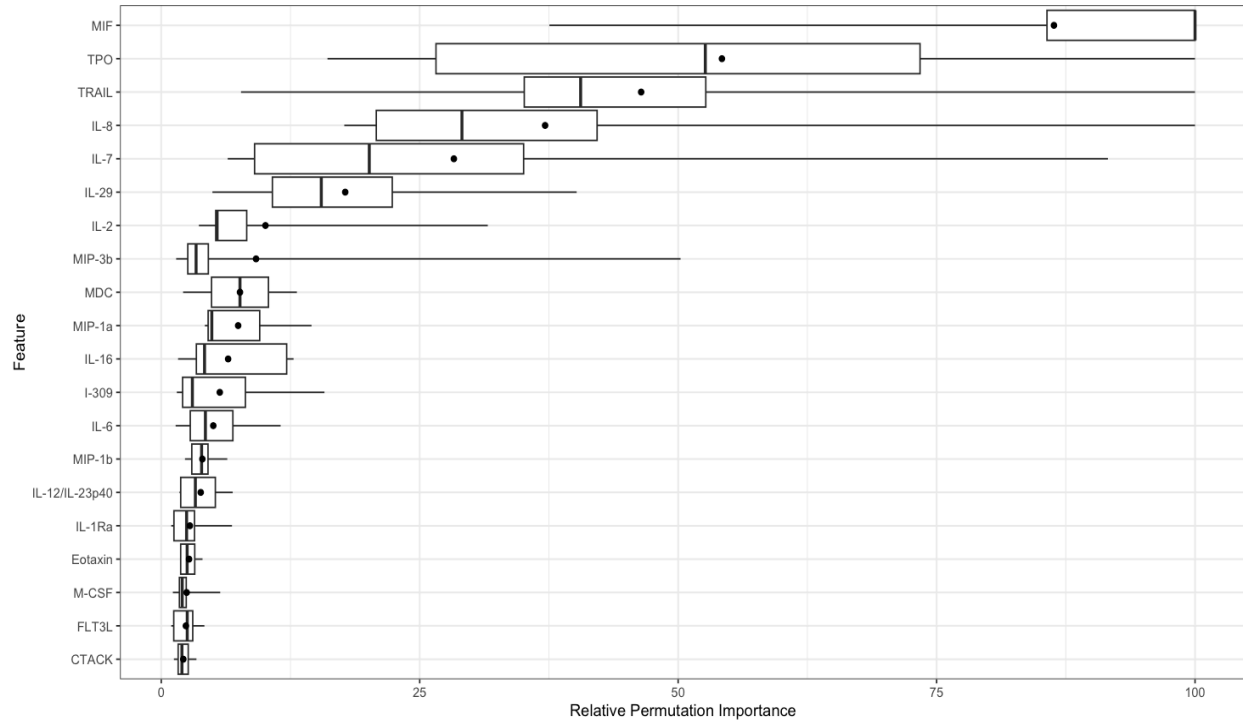
945



946

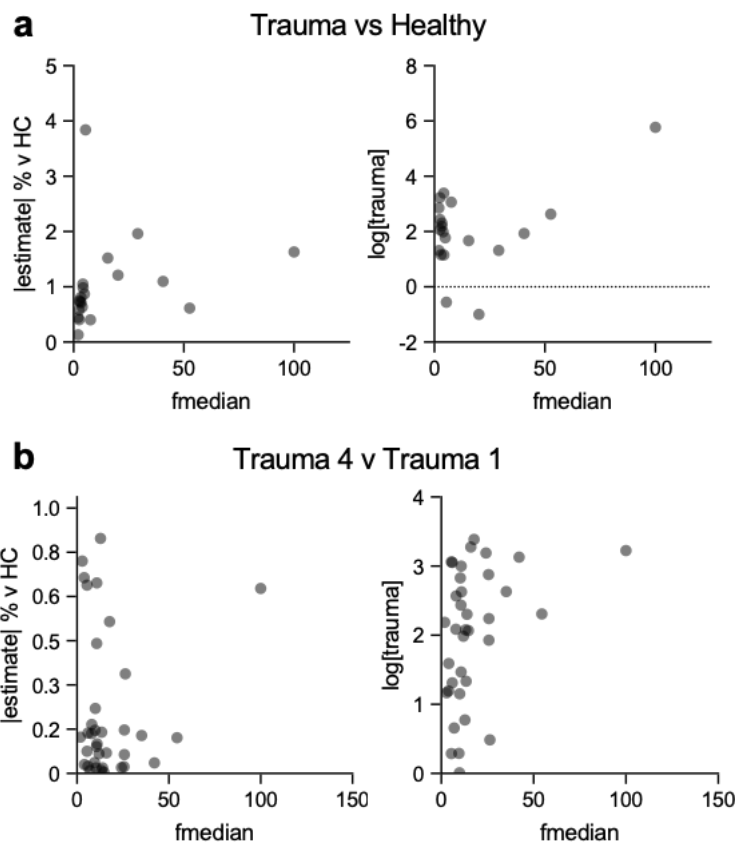
947 **Supplemental Figure 8 | Phenotypes of sub-cluster of patients with variable cytokine/chemokine**

948 **levels.** Log-normalized concentration (pg/ml), black = above or below limit of detection (LOD).

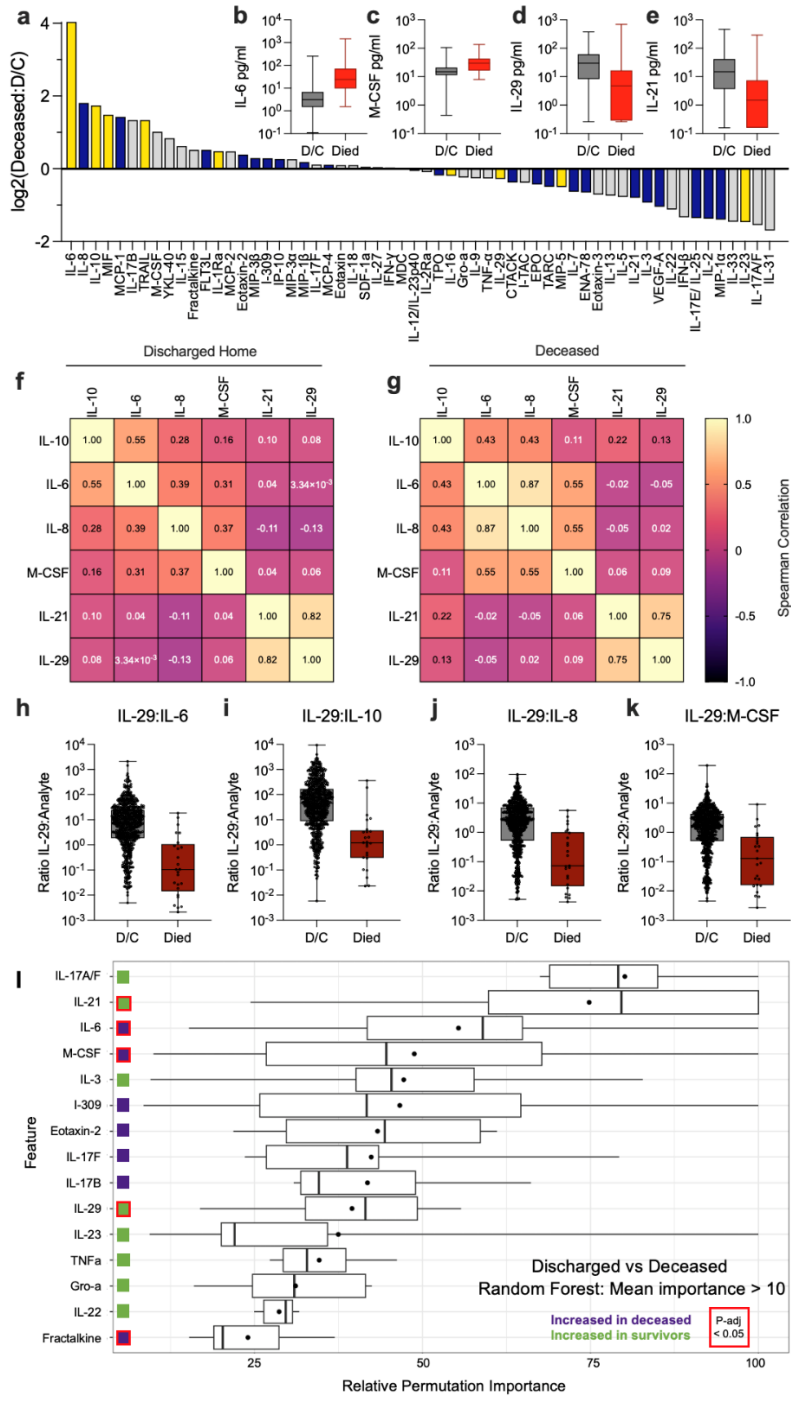


949

950 **Supplemental Figure 9 | Relative permutation importance of different proteins on identification of**
 951 **trauma versus healthy control via machine learning.** Boxplots are the protein's minimum, first quartile,
 952 median, mean (black dot), third quartile, and maximum relative importance values across 10 model
 953 iterations. Importance is ordered by average relative importance across all iterations.

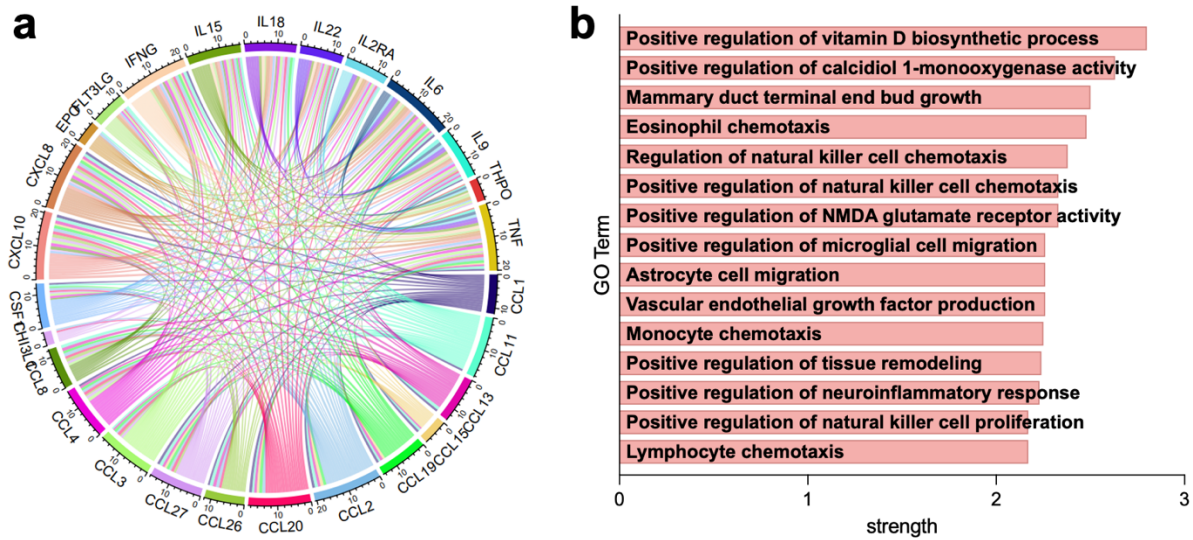


954
 955 **Supplemental Figure 10 | Association of median relative importance with absolute percent change**
 956 **and analyte concentration.** (a) Median relative importance (f_{median}) of proteins across 10 model
 957 iterations versus its absolute percent change of concentration in trauma patients versus healthy controls
 958 (left) and concentration of analyte (right) in comparison between healthy controls and trauma. (b) Median
 959 relative importance (f_{median}) of proteins across 10 model iterations versus its absolute percent change of
 960 concentration from trauma level 1 to trauma level 4 (left) and concentration of analyte (right) in comparison
 961 between trauma level.



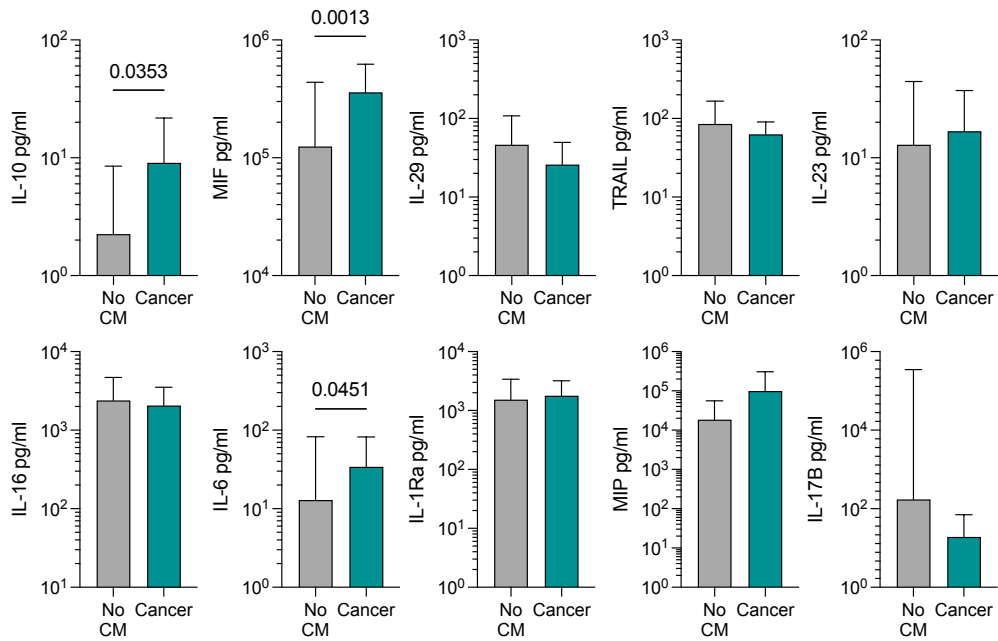
962
963
964
965
966
967
968
969

Supplemental Figure 11 | Correlative proteins with patient survival. (a) Log₂ fold change of cytokine concentration in those that died over those that were discharged home (D/C). (b – e) Cytokines altered in moribund patients. (f – g) Spearman correlations between significantly different cytokines in D/C vs deceased. (h – k) Ratios of IL-29 with other cytokines predictive of mortality. (l) Random Forest machine learning permutation importance. Green squares = increased in survivors (D/C), Purple squares = increased in deceased, red outline = p < 0.05 when comparing concentrations via Mann Whitney with post-hoc correction for multiple comparisons. Data are mean (dot) and median (line) ± IQR.



970

971 **Supplemental Figure 12 | STRING analysis of proteins upregulated with age.** (a) Chord diagram
 972 generated based on STRING analysis of interactions among proteins upregulated with age. (b) STRING
 973 database gene ontology enrichment of biological processes from proteins upregulated with age (top 15 in
 974 strength of enrichment, FDR < 0. 05).



975

976 **Supplemental Figure 13 | Exploratory analyses of trauma patients with no comorbidities versus**

977 **those with reported cancer incidence. Grey = no comorbidities (CM), Teal = cancer patients (cancer).**

978 Data are mean ± standard deviation, p = student's T test (without correction for multiple comparisons).

	Count	%
Location		
Worcester	154	15.45
Charlotte	219	21.97
Baltimore	208	20.86
Jacksonville	223	22.37
Miami	193	19.36
Sex		
Male	725	72.50
Female	272	27.20
Unknown	3	0.30
Race		
White or EA	552	55.20
Black or AA	375	37.50
Asian or AsA	6	0.60
Native American/Alaska Native	6	0.60
Other	28	2.80
Unknown	33	3.30
Ethnicity		
Hispanic/Latino	162	16.20
Not H/L	818	81.80
Unknown	20	2.00
Age		
18 - 39	499	50.51
40 - 70	373	37.75
> 70	113	11.44
Unknown	3	0.30
Mechanism of Injury		
MVC	448	37.87
Fall	221	18.68
GSW	117	9.89
Assault	221	18.68
Stab	54	4.56
Fire/burn	17	1.44
Nature/environment	3	0.25
Non-Motorized Transport	4	0.34
Drowning	1	0.08
Other Motorized Transport	16	1.35
Other, specified	77	6.51
Other, unspecified	1	0.08
Unknown	3	0.25
Tested for COVID?		
Yes	652	65.20
No	332	33.20
Unknown/NA	16	1.60

979

980 **Supplemental Table 1 | Demographics and basic trauma information for patients.** Sex = biologic sex.

981 Race = Self-reported race (EA = European American, AA = African American, AsA = Asian American).

982 Ethnicity = Self-reported ethnicity (H/L = Hispanic/Latino). MVC = motor vehicle crash, GSW = gunshot

983 wound or shotgun wound.

984
985
986
987
988
989

Supplemental Table 2 | Literature review of cytokines analyzed and their reported trends in trauma and associated conditions. Review on both GoogleScholar and PubMed search engines using key words “trauma”. “injury”, “wound”, “traumatic injury”, with or without “human”. Publications are only listed that are indexed in PubMed.

Analyte	Aliases	Reported in humans systemically?	Trauma/Surgery/ Sepsis/TBI/Model Organism?	Reported Trend	This Study	References (PMID)	Notes
CTACK	CCL27	No	In vitro	None reported	DOWN	-	No literature on traumatic injury, only cell culture
ENA-78	CXCL5	No	Surgery	Increased (local tissue)	DOWN	8961388	Hepatectomy
Eotaxin	CCL11	Yes	Surgery	Decreased with trauma	DOWN	24602333	Muscle surgical trauma
Eotaxin-3	CCL26	No	Trauma	Increased (local tissue)	DOWN	29764285	Subdural hematoma fluids
FL13L		No	TBI	Increased (local tissue)	DOWN	31017044, 25672780	TBI, Protective in MODS
I-309	CCL1	No	TBI	Increased (local tissue)	DOWN	23788036	Neural tissue, mouse
I-TAC	CXCL11	No	TBI	Increased (local tissue)	DOWN	33189916	TBI
IFN β		No	Trauma	Increased (local tissue)	DOWN	27438769	Skin tissue
IFN γ		No	Trauma	Increased (isolated cells)	DOWN	20100328	T cells isolated from trauma patients
IL-10		Yes	Trauma	Increased with trauma	UP	19317866, 11030163, 18092384, 10580806	Multiple trauma types & severities
IL-12/IL-23p-40		No		None reported	DOWN		No literature on traumatic injury
IL-13		Yes	TBI	No change (plasma)	DOWN	11089904	TBI
IL-15		Yes	Sepsis	Decreased (plasma)	DOWN	36915009	Sepsis in blunt trauma patients
IL-16		Yes	Trauma	Increased (plasma)	UP	15706184	General trauma patients
IL-17AF		No	OA (Mouse)	Increased (local tissue)	DOWN	32955487	PTOA, mouse model
IL-17B		No		None reported	DOWN	-	No literature on traumatic injury, only autoimmune
IL-17E/IL-25	IL25	No		None reported	DOWN	-	No literature on traumatic injury, only autoimmune
IL-17F		No	OA (Mouse)	Increased (local tissue)	DOWN	32955487	PTOA, mouse model
IL-18		Yes	Trauma	Increased (plasma, PBMCs)	UP	7474003, 7606873	Surgical and traumatic injury
IL-2		Yes	Trauma	Decreased (plasma)	DOWN	3877497, 2956432	Traumatic injury
IL-21		Yes	Trauma	Decreased (plasma)	DOWN	33748428	Down in severe trauma
IL-22		Yes	Trauma	Decreased (plasma)	UP	33748428	Down in severe trauma
IL-23		Yes	Trauma	Decreased (plasma)	UP	33748428	Down in severe trauma
IL-27		Yes	Sepsis	Increased (local tissue, serum)	DOWN	23842867, 31507598	BAL of lung injury, serum of sepsis patients
IL-29	IFNL1	No		None reported	UP	-	No literature on traumatic injury, only autoimmune
IL-3		Yes	Trauma	Decreased (plasma)	DOWN	9126191	Trauma hemorrhage
IL-31		No		None reported	DOWN	-	No literature on traumatic injury, only ich
IL-33		Yes	Trauma	Increased (plasma)	DOWN	33771088	Early in critically injured patients
IL-4		Yes	Trauma	Decreased (serum)	DOWN	24402554	Orthopedic trauma
IL-5		No		None reported	DOWN	-	No literature on traumatic injury
IL-6		Yes	Trauma	Increased (serum)	UP	24402554	Orthopedic trauma
IL-7		Yes	Trauma	Decreased (serum)	DOWN	31246919	Chest wound + TBI versus TBI alone
IL-8	CXCL8	Yes	Trauma	Increased (serum)	DOWN	24402554, 32837068	Increased in orthopedic trauma, decreased in thoracic trauma
IL-9		Yes	Trauma	Conflicting data (serum)	DOWN	33748428	Decreased in severe blunt trauma patients
IP-10	CXCL10	Yes	Trauma	Increased (plasma)	DOWN	19717036	Increased in multi organ failure patients versus other trauma patients
MCP-1	CCL2	Yes	Trauma	Increased (plasma)	DOWN	37562231	Greater in nonsurvivors of trauma
MCP-4	CCL13	Yes	TBI	Increased (serum)	DOWN	29685283	Brain injury (concussed)
MDC	CCL22	No	OA (Rat)	Increased (serum)	DOWN	30623804	Rat model of OA
MIF		Yes	Trauma	Increased (serum)	UP	20499270	Higher in post-trauma MODS
MIP-1a	CCL3	No	Surgery	Increased (local tissue)	DOWN	26543677, 21371163	Increased in wound fluid of surgical wounds
MIP-1b	CCL4	No	Surgery	Increased (local tissue)	DOWN	26543677, 21371163	Increased in wound fluid of surgical wounds
MIP-3a	CCL20, LARC	No		None reported	DOWN	-	No literature on traumatic injury
MIP-3b	CCL19, ELC	No		None reported	DOWN	-	No literature on traumatic injury, only autoimmune
MIP-5	CCL15	No		None reported	UP	-	No literature on traumatic injury
SDF-1a		No	Trauma	Increased (local tissue)	DOWN	28272352	Produced at the site of injury
TARC		Yes	Trauma	Increased (plasma)	DOWN	37120600	Trauma hemorrhagic shock
TNFA		Yes	Trauma	No change (plasma)	DOWN	8230332	General trauma patients
TPO	THPO, MGDF	Yes	Sepsis	Increased (serum)	DOWN	10997881	Sepsis
TRAIL	CD253, TNFSF10	No	Trauma	Increased (local tissue)	UP	21760914	Gene expression, local tissue of elderly bone fractures
VEGF-A	VEGF	Yes	Trauma	Increased (serum)	DOWN	9711425	Polytrauma and burns

990
991
992
993
994

Analyte	Aliases	Reported Trend with Age	This Study	References (PMID)	Notes
CTACK	CCL27	None reported	UP	-	
ENA-78	CXCL5	None reported	DOWN	-	
EPO		Increase with age	UP	25915923	
Eotaxin	CCL11	Increase with age	UP	26080062	
Eotaxin-3	CCL26	Decrease with age	UP	30685456	Dermatitis patients
FLT3L		Increase with age	UP	26080062	
Gro-a	CXCL1	None reported	DOWN	-	
I-309	CCL1	None reported	UP	-	
IFNg		Increase with age	UP		In children
IL-12/IL-23p40		Increase with age	UP	10671301	Evaluated total IL-12
IL-15		Increase with age	UP	16192677	
IL-16		None reported	DOWN	-	
IL-18		Increase with age	UP	21571262	Secreted from dendritic cells (not total)
IL-22		None reported	UP	-	
IL-27		Trended increase	UP		
IL-2Ra	CD25	None reported	UP		
IL-6		Debated	UP	1453878, 11213271	Some reports of increase, some decrease with age
IL-8	CXCL8	None reported	UP	-	
IL-9		None reported	UP	-	
IP-10	CXCL10	Increase with age	UP	26080062	Trauma Patients
M-CSF	CSF1	Trended increase	UP	26080062	
MCP-1	CCL2	Increase with age	UP	23039889	Study incorrectly calls MCP-1 as CCL1, cited here under MCP-1
MCP-2	CCL8	None reported	UP	-	
MCP-4	CCL13	Increase with age	UP	26080062	
MIP-1a	CCL3	None reported	UP	-	
MIP-1b	CCL4	Decrease with age	UP	30448299	Trauma Patients
MIP-3a	CCL20, LARC	None reported	UP	-	
MIP-3b	CCL19, ELC	None reported	UP	-	
MIP-5	CCL15	None reported	UP	-	
TNFa		Increase with age	UP	10931139	
TPO	THPO, MGDF	None reported	UP	-	
TRAIL	CD253, TNFSF10	None reported	DOWN	-	
VEGF-A	VEGF	Increase with age	UP	26080062	
YKL-40	CHI3L1	Increase with age	UP	18070151	

Supplemental Table 3 | Literature review of cytokines analyzed and their reported trends with age in human subjects. Review on both GoogleScholar and PubMed search engines using key words “age”, “increase”, “decrease”, “correlate with age”, and “human” or “patient”. Publications are only listed that are indexed in PubMed.

998 **SUPPLEMENTAL METHODS**

999

1000 *Random Forest Model Tuning*

1001

1002 Data was split 70/30 into training/test datasets, maintaining the ratio of trauma:healthy patients in
1003 each set. Hyperparameters were tuned with tidymodels grid search (n=20) to determine the
1004 appropriate number of variables to randomly sample at splitting (mtry) and minimum amount of
1005 data needed to split (min_n). Tuning was done with 10 trees using 5-fold cross validation to select
1006 the model with the highest AUC-ROC as the best model. This model was trained on the training
1007 set, then applied to test data. It was then validated on both training and test data separately with
1008 the same tuned mtry and min_n parameters and 200 trees. Predictions, model metrics, and
1009 variable permutation importance values from these final models were collected.

1010

1011 *Random Forest Variable Importance*

1012

1013 Permutation importance calculates the influence of each variable on model prediction based on
1014 how much a change in the variable's values affects the model's predictive error.⁴³ To derive
1015 summary statistics of variable importance values and to minimize the chance of a variable
1016 erroneously showing up as important, the model training and validation steps were repeated on
1017 the dataset 10 times from different seeds and the permutation importance for each variable was
1018 ranked for each iteration. The raw variable importance values were then converted to relative
1019 importance by dividing each variable importance score by the largest importance score of the
1020 variables for each of the 10 iterations and multiplied by 100.⁵⁴ Variables whose permutation
1021 importance ranked in the top 10 in at least 5 of the iterations were plotted, along with their
1022 minimum, first quartile, median, mean, third quartile, and maximum importance values.

1023

1024 **SUPPLEMENTARY DISCUSSION**

1025

1026 *Confirmation of literature findings:*

1027

1028 Our observation of decreased IL-2 levels, with many below the LOD, in trauma patients versus
1029 control samples is consistent with reports of reduced IL-2 production (associated with T cell
1030 activation) in response to traumatic injury.^{3,70} In agreement with the literature, trauma patients also
1031 exhibited increased levels of several other interleukins, including IL-16,^{71,72} IL-1Ra,^{73,74} and IL-6,⁷

1032 as well as a decrease in IL-21⁸ and IL-3.⁷⁵ We observed several other patterns consistent with
1033 previous literature. These include MIF (upregulated⁷⁶), TRAIL (upregulated and previously
1034 reported to be increased in elderly osteoporotic fractures⁷⁷), and Eotaxin (downregulated, and
1035 previously reported to be downregulated in musculoskeletal surgical trauma^{72,78}).

1036

1037 *Downregulated proteins that are contrary to literature findings:*

1038

1039 We also observed some trends that differ from those reported in the literature. The downregulation
1040 of VEGF-A, which is involved in angiogenesis, in trauma samples compared to healthy samples
1041 is especially interesting due to the involvement of angiogenesis in tissue repair. Although previous
1042 studies have demonstrated increased serum VEGF levels on day of arrival for both trauma and
1043 burn patients,⁷⁹ we observed a lower level of VEGF-A in trauma samples, regardless of injury
1044 mechanism, general wound type, specific wound type, wound location, or trauma level. This
1045 suggests a potential decrease in angiogenesis in the immediate aftermath of injury, possibly as a
1046 mechanism to control blood loss.

1047

1048 Of the other proteins for which we found trends that are contrary to what was previously published
1049 in the literature, evaluation of many of these proteins in human patients had primarily been limited
1050 to TBI. Increased levels of FLT3L, which activates FLT3 to stimulate proliferation of hematopoietic
1051 cells, have been reported in a study of the cerebral fluid of 10 patients that had experienced
1052 severe TBI.²³ In mice, FLT3L has been shown to exhibit protective effects in ischemia-reperfusion
1053 injury, volumetric muscle loss, and multi-organ dysfunction syndrome.⁸⁰⁻⁸² We observed
1054 significant decreases in FLT3L levels in trauma, as well as for each injury mechanism, general
1055 wound type, specific wound type, and wound location, versus healthy controls. This was also true
1056 for patients who had head/neck wounds, although it cannot be assumed that those patients would
1057 have TBI. Thus, the type of injury (ex. TBI vs. Non-TBI) likely played a role in the differences in
1058 our observation compared to the previous reports. In a study of brain tissue samples from 12
1059 patients with severe TBI, I-TAC, which is chemotactic for IL-activated T-cells, was found to be
1060 upregulated. Although we observed an upregulation of I-TAC in trauma patients compared to
1061 healthy controls, this difference was not statistically significant. Nevertheless, other factors such
1062 as the use of systemic fluids (i.e. blood) versus localized fluids or tissues should also be taken
1063 into consideration, as it is possible that local elevation of proteins would not be reflected in
1064 systemically-sampled fluid.

1065

1066 Levels of IL-7, which is involved in stimulation of lymphoid progenitors, have previously been
1067 reported to be elevated with increasing injury severity for trauma patients,⁸ although we observed
1068 a significantly lower level of IL-7 for trauma patients versus controls, and no significant difference
1069 between IL-7 levels in the most severe (level 1) cases compared to less severe (levels 2, 3, or 4)
1070 cases. However, this is likely a result of our inclusion of non-ICU patients, while the Cai et al.
1071 study included only trauma patients who were admitted to the ICU and survived to discharge.
1072 Another study found that TBI patients with chest injury had lower mean IL-7 levels than TBI
1073 patients without chest injury.²² Although we observed a significant decrease in IL-7 levels across
1074 all wound types, wound locations, and injury mechanisms, these findings altogether suggest the
1075 importance of injury characteristics on IL-7 levels. This is further supported by conflicting reports
1076 on the levels of a number of other cytokines, which is likely a result of differences in patient
1077 characteristics. For example, IL-8 levels were shown to be higher in patients with orthopedic
1078 injuries compared to healthy controls,⁷ while serum IL-8 levels were shown to be higher in healthy
1079 controls compared to chest trauma patients.⁸³ Meanwhile, we observed lower IL-8 levels for
1080 trauma patients across all injury mechanisms, wound types, and wound locations, compared to
1081 healthy controls. TPO also has conflicting reports in the literature, with one study finding that
1082 patients with multiple trauma have elevated serum TPO in the days following injury,⁸⁴ while
1083 another study found that TPO levels were not measurable for patients with major lower extremity
1084 trauma.⁸⁵ Lower TPO levels have also been associated with nonsurvival in patients that have
1085 experienced major trauma.⁸⁶ We observed significantly lower TPO in trauma patients compared
1086 to healthy controls, regardless of injury mechanism, wound type, and wound location. However,
1087 patients with the most severe injuries exhibited higher TPO levels than patients with the least
1088 severe injuries, which appears to support prior findings of elevated TPO after severe injury.

1089
1090 A statistically significant decrease in concentration of IL-17E/IL-25 was observed for injury
1091 mechanisms of GSW and MVC but was not statistically significant for the other injury
1092 mechanisms. Additionally, the wound type played a role in the concentration of IL-17E/IL-25.
1093 Patients who experienced only internal wounds or only penetrating wounds did not exhibit a
1094 significant decrease in this protein, but those who experienced both wound types did. We
1095 observed that reduced IL-17E/IL-25 concentration was statistically significant for patients who
1096 experienced central wounds or combined head/neck and central wounds, but not for patients who
1097 experienced combined head/neck and peripheral wounds, head/neck wounds only, combined
1098 peripheral and central wounds, or peripheral wounds only.

1099

1100 *Novel reporting of proteins with changes in levels below the LOD:*

1101

1102 The concentration of several proteins (IL-31, IL-5, MIP-3a) previously unreported in this setting
1103 were not significantly associated with trauma; however, there were significant differences in our
1104 assay's ability to detect a signal. Each of these proteins were significantly less likely to be detected
1105 in trauma samples compared to healthy controls. This suggests an exceptional potential reduction
1106 in the concentrations of these proteins. IL-31 is linked both to Th2 immunity associated with wound
1107 healing and to dermatitis. IL-5 is also associated with type-2 immunity and eosinophil
1108 inflammation. MIP-3a has been associated with autoimmunity in mouse models, and also
1109 downregulated with IL-10 which correlates with trauma that induces IL-10. Type-2 immune
1110 proteins have important impact on wound closure and collagen deposition, which are critical in
1111 long-term recovery of injuries. Disruption of these pathways presents another mechanism by
1112 which severe trauma limits healing ability by decreasing the induction of collagen stimulating
1113 immune responses to close wounds and strength those closures. Induction of these responses
1114 locally may provide a therapeutic window to assist in wound healing that may be compromised in
1115 patients sustaining severe trauma.

1116

1117 *Upregulated proteins that are contrary to literature findings:*

1118

1119 While levels of both IL-22 and IL-23 have been reported to decrease in severe trauma,⁸ we did
1120 not observe a significant change in IL-22 levels between trauma and healthy control patients.
1121 However, we found a significant increase in IL-23 concentration of trauma samples compared to
1122 healthy controls, which held true for patients injured through falls or stabbings, but not those who
1123 were injured in MVC or GSW. IL-23 levels are significantly higher in more severe (level 1) injuries,
1124 compared to less severe (level 3, level 4) injuries, and IL-22 levels were also significantly higher
1125 in level 1 versus level 4 injuries. Increased IL-23 levels were observed for patients who
1126 experienced only internal soft tissue wounds, or only penetrating soft tissue wounds, but not for
1127 patients with bone involvement. The observed differences between trends of IL-22 and IL-23
1128 levels in our study compared to the previous report may be attributed to differences in patient
1129 cohorts, as the Cai et al. cohorts were comprised of only patients admitted to the ICU and who
1130 survived to discharge.