

1 Late diagnosis of Marfan syndrome is associated with 2 unplanned aortic surgery and cardiovascular death

3 Brief title: Late diagnosis of Marfan syndrome

4

5 Jason Claus, MD^a; Lauritz Schoof, MD^a; Thomas S. Mir, MD^{a,g}; Anna Lena Kammal, MD^b;

6 Gerhard Schön, MSc^c; Kerstin Kutsche, PhD^d; Christian-Alexander Behrendt, MD^{e,g}; Klaus

7 Kallenbach, MD^f; Tilo Kölbel, MD^a; Christian Kubisch, MD^{d,g}; Till Joscha Demal, MD^{a,h},

8 Johannes Petersen, MD^{a,h}; Jens Brickwedel, MD^a; Michael Hübler, MD^a; Christian Detter,

9 MD^a; Paulus Kirchhof, MD^{a,hi}; Eike Sebastian Debus, MD^{a,g}; Meike Rybczynski, MD^{*a,g};

10 Yskert von Kodolitsch, MD, MBA^{†*a,g}

11 From the ^aUniversity Heart and Vascular Center Hamburg, ^bDepartment of Legal Medicine,

12 ^cInstitute of Medical Biometry and Epidemiology, and ^dInstitute of Medical Genetics, all at

13 the University Medical Center Eppendorf, Hamburg, ^eAsklepios Clinic Wandsbek, Asklepios

14 Medical School, all in Hamburg, Germany, and ^ffrom Centre Hospitalier de Luxembourg,

15 VASCERN HTAD Affiliated Partner Centre, Luxembourg ^gVASCERN HTAD Affiliated

16 Partner Centre, Hamburg, ^hGerman Center for Cardiovascular Research (DZHK), Partner Site

17 Hamburg/&Kiel/Lübeck, Hamburg, Germany, ⁱInstitute of Cardiovascular Sciences,

18 University of Birmingham, UK

19 *Contributed equally

20

21 [†]Address for Correspondence: Yskert von Kodolitsch MD, MBA; University Medical Center

22 Hamburg-Eppendorf; Martinistr. 52, 20246 Hamburg; Germany, Tel. +4940 7410 57328;

23 Fax+4940 7410 54840; E-mail: kodolitsch@uke.de

24 **Abstract**

25 Background. Marfan syndrome (MFS) guidelines recommend optimal pharmacological
26 therapy (OPT) and replacement of the ascending aorta (RAA) at 5.0cm diameters to prevent
27 acute type A aortic dissection (ATAAD) and death. The effect of early MFS diagnosis and
28 initiation of therapy on outcomes is not known.

29 Objective. To evaluate the effect of age at MFS diagnosis and therapy initiation on delayed
30 RAA and death.

31 Methods. This retrospective observational cohort study with long-term follow-up included
32 consecutive patients with MFS, pathogenic *FBNI* variant, and regular visits to a European
33 Reference Network Center. We considered MFS diagnosis at age ≥ 21 years late, and OPT
34 initiation at age < 21 years early. Outcomes were delayed RAA with aneurysm diameter
35 > 5.0 cm or ATAAD, and death from all causes. We used landmark design starting at age 21
36 years to determine associations with outcomes.

37 Results. The study group consisted of 288 patients (45.1% male), including 169 patients with
38 late MFS diagnosis (58.7%) and 63 with early OPT (21.9%). During mean follow-up of
39 25 ± 14.7 years, 78 patients had delayed RAA, with 42 operations for ATAAD and 36 for
40 aneurysms ≥ 5.0 cm. There were 33 deaths, including 11 deaths late after ATAAD. All deaths
41 were cardiovascular. Late diagnosis, but not early OPT, showed univariate association with
42 delayed RAA ($P < 0.001$) and death ($P = 0.025$). Multivariate Cox regression analysis confirmed
43 late diagnosis as predictor of delayed RAA (hazard ratio (HR)=8.01; 95% confidence interval
44 (95%CI) 2.52-25.45; $P < 0.001$) and death (HR=4.68; 95%CI 1.17-18.80; $P = 0.029$).

45 Conclusions. Late diagnosis of Marfan syndrome is associated with delayed surgery and
46 death.

47 **Introduction**

48 Marfan syndrome (MFS) is a pleiotropic autosomal dominant disease that is caused by
49 pathogenic variants in the gene encoding fibrillin-1 (*FBNI*). Due to the weakening of
50 cardiovascular tissue, patients develop aortic aneurysms with the risk of rupture, acute type A
51 aortic dissection (ATAAD) and death. Guidelines recommend optimal pharmacological
52 therapy (OPT) with beta-blockers or angiotensin receptor blockers, or their combination, to
53 slow aortic root dilatation, and elective replacement of the ascending aortic (RAA) at 5.0cm
54 diameters to prevent ATAAD and death ¹. Timely diagnosis of MFS, early initiation of OPT,
55 and planned replacement of an enlarged aorta may be able to prevent aortic aneurysms with
56 risk of rupture, reduce the need for unplanned operations, and thereby prolong life ².
57 However, evidence regarding the timing of MFS diagnosis and early OPT initiation on
58 outcomes is limited. To evaluate the impact of late MFS diagnosis and early OPT initiation on
59 delayed RAA and premature death, we conducted a retrospective observational cohort study
60 with long-term follow-up using landmark design. All-cause mortality served as the secondary
61 outcome. We analyzed consecutive patients with MFS and regular visits to the German hub of
62 the European Reference Network on Rare Multisystemic Vascular Diseases, Germany
63 (VASCERN-GE).

64 **Methods**

65 **Patients, diagnostic assessment, and follow-up**

66 Consecutive patients with MFS seen at the Hamburg VASCERN-GE tertiary care center
67 between January 2008 to December 2021 were enrolled in the program. All patients
68 participated at least 3 months, with regular visits of at least 12 months' intervals at the center.
69 Patients were included if they had MFS with positive Ghent criteria including the presence of
70 a likely pathogenic or pathogenic *FBNI* variant ³. We excluded patients with rarer forms of

71 MFS, including so-called “neonatal MFS” and patients with MFS and pathogenic variants in
72 other disease genes such as *TGFBR2*⁴, because their natural disease course may differ from
73 that of patients with typical MFS secondary to *FBNI* variants⁵. Recent population-based
74 studies from Denmark found a median age of 19 years at MFS diagnosis with only 5% risk
75 for aortic events at age <21 years⁶. Therefore, we considered MFS diagnosis late at ages ≥21
76 years, and OPT early with age <21 years. The primary outcome was delayed RAA, which we
77 defined as RAA for aneurysms with diameters >5.0cm or for ATAAD. All study patients gave
78 informed consent. This study was approved by the Ethics Committee of the Hamburg Medical
79 Association in Hamburg, Germany, under registration number 2012-10518-BO-ff. The
80 analysis adheres to the STROBE reporting criteria ([Table S1](#) in the Supplemental Appendix)
81 ⁷.

82

83 To establish the first clinical diagnosis of MFS, we accepted MFS diagnoses from other
84 institutions, and we noted the patient age at diagnosis according to medical records or, in the
85 case of previously undiagnosed MFS, after we established the MFS diagnosis at our center.
86 We confirmed the diagnosis of MFS in all patients according to the revised Ghent criteria⁴: In
87 the absence of a positive family history of MFS, MFS was present with aortic root dilatation
88 in combination with ectopia lentis or a pathogenic *FBNI* variant or with a systemic Ghent
89 score ≥7 points or with the combination of ectopia lentis with a pathogenic *FBNI* variant
90 known to cause aortic dilatation. In the presence of a positive family history, MFS was
91 present if ectopia lentis or a systemic Ghent score ≥7 points or aortic root dilatation was
92 detected⁴. A total of 321 patients met MFS criteria based on clinical criteria alone, and 20
93 patients met MFS criteria only in combination with clinical criteria and a likely pathogenic or
94 pathogenic *FBNI* variant. Diagnostic confirmation of MFS required the presence of a likely
95 pathogenic or pathogenic *FBNI* variant in all 321 patients. For genetic testing of *FBNI*, DNA
96 was isolated from leukocytes by standard procedures. Until 2016, Sanger sequencing of the

97 coding region and exon-intron boundaries identified the *FBNI* pathogenic variant. Since
98 2016, targeted next-generation sequencing panels replaced Sanger sequencing⁸. We classified
99 *FBNI* variants (mRNA reference sequence: NM_000138.5) as pathogenic or likely
100 pathogenic (class IV-V) according to established standards³.

101 **Outcomes**

102 We assessed the duration from landmark age 21 years to most recent contact as the time of
103 follow-up, and the duration from the age at first to the most recent visit at VASCERN-GE as
104 time of care. Guidelines required at least annual appointments, where we adjusted intervals to
105 3 months or 6 months¹. Patients who failed to attend appointments received reminder calls
106 and letters. Failure to attend regular appointments for ≥ 2 years was considered lost to follow-
107 up, with documentation of clinical events and reasons for absence. To prevent ATAAD,
108 guidelines recommend RAA for MFS at aortic diameters of 5.0cm¹. We considered timely
109 RAA at diameters ≤ 5.0 cm, and delayed RAA with one of the following criteria: First, RAA
110 for aneurysms with diameters > 5.0 cm, because these diameters increase the risk of ATAAD
111 requiring urgent RAA¹. Second, RAA for ATAAD requiring emergent RAA¹. ATAAD was
112 present in the case of overt dissection or intramural hematoma involving the ascending
113 portion of the aorta with matching symptoms¹. Finally, we considered all-cause mortality as
114 death from any cause. Delayed RAA served as primary study outcome, and all-cause
115 mortality as secondary outcome. Regardless of the center where surgery was performed,
116 surgical techniques of RAA comprised isolated replacement of the supra-coronary part of the
117 ascending aorta with an aortic tube graft⁹, and complete replacement including the aortic root
118 with a composite valve graft according to Bentall with biological or mechanical valve
119 prostheses, or with aortic-valve-sparing procedures according to David or to Yacoub¹.

120 **Capture and completeness of events, certainty of evidence**

121 To estimate the certainty of evidence, we presented data from all patients with MFS who were
122 excluded because their age was <21 years, or who were lost to follow-up. To evaluate
123 outcome bias, we examined all autopsies at the Institute of Forensic Medicine, University
124 Medical Center, between January 2008 and December 2021 for fatal ATAAD with a pre-
125 mortem diagnosis of MFS. To determine whether our cohort approximates the true number of
126 MFS in the general population, we used the prevalence of MFS in the Danish population as a
127 reference standard, the total number of 4,958,621 inhabitants in the Hamburg metropolitan
128 region, and all 280 patients with MFS at VASCERN-GE in this region, including 217 study
129 patients, 39 patients aged <21 years, 6 with neonatal MFS, 12 with negative and 6 without
130 *FBNI* gene testing^{10, 11}. Finally, to validate the all-cause mortality of MFS, we used
131 previously established routines to assess mortality of MFS and degenerative aortic disease
132 from health insurance claims of 6.5 million insured patients of the health insurance company
133 DAK-Gesundheit between 1/2008 and 12/2017¹². For Kaplan-Meier curve analysis, we used
134 ICD codes Q87.4 to identify 198 patients with MFS and ICD codes I70.0, I71, I74.0, or I74.1
135 to identify 46,533 patients with degenerative aortic disease. We performed a brief scoping
136 review to qualify the nature of the evidence in the literature on the prognostic impact of time
137 of diagnosis of MFS on aortic events and mortality, using the PRISMA extension for scoping
138 review criteria (PRISMA-ScR; [Table S2](#))¹³. In our study limitations, we applied GRADE
139 criteria for prognostic factors research to rate the certainty of evidence that a late diagnosis of
140 MFS actually affects outcomes¹⁴.

141 **Power calculation**

142 To estimate study imprecision, we determined the minimum sample size of the study using a
143 web-based calculator (<https://riskcalc.org>), setting the 2-sided significance level at 0.05, the
144 study power (1-beta) at 0.8, the sampling ratio at 1.0, the probability of delayed RAA

145 (primary endpoint) in the unexposed and exposed groups at 0.4 and 0.6, respectively, and the
146 failure rate set at 20%.

147 **Statistical analysis**

148 We used age at MFS diagnosis to distinguish two study groups according to early MFS
149 diagnosis with age <21 years and late MFS diagnosis with age ≥21 years. We evaluated the
150 following risk variables: Male sex, as this is associated with an increased risk of aortic events
151 ⁶; systemic Ghent score ≥7 points, as this indicates a more severe MFS phenotype ⁴; early
152 OPT with OPT initiation before the age of 21 years, as OPT before that age is considered
153 most effective in slowing aortic growth rates ²; RAA before the age of 21 years, as RAA
154 before that age is uncommon and indicates a more severe phenotype of MFS ¹¹; sporadic
155 occurrence of MFS with the presence of a *de novo* *FBNI* variant in an affected patient, as
156 severe phenotypes are more likely with sporadic occurrence than with familial occurrence ²;
157 genetic testing of index patients for disease-causing *FBNI* variants, as severe phenotypes are
158 more likely in index patients than in relatives with cascade gene testing ¹⁵; residence in the
159 Hamburg metropolitan area according to the geographic definitions of the 2011 census, as
160 patients from this area more representative of the general German population than patients
161 who traveled from other parts of Germany ¹⁰. Continuous data are presented as means ±
162 standard deviations (SD), and categorical data are presented as counts and percentages, with
163 the Kruskal-Wallis test or Fisher's generalized exact method for comparisons. We used the
164 Kaplan-Mayer method for bivariate analysis of time to event to represent the effects of
165 exposure variables on outcomes, using log-rank to test for significant differences. We
166 performed multivariate Cox regression analysis including all study covariates to determine
167 whether late MFS diagnosis was an independent predictor of outcomes. There were no
168 missing data in this study, all p-values were two-sided, and a p-value <0.05 was considered
169 significant. Statistical software R version 4.3.2 was used for all statistical tests and plots.

170 **Results**

171 **Population**

172 A total of 365 patients fulfilling the Ghent criteria of MFS were potentially eligible for study
173 inclusion. Of these, 6 patients were excluded because they had neonatal MFS, 12, because the
174 *FBNI* gene testing was negative, and 6, because *FBNI* gene testing was not available. Of the
175 remaining 341 patients, we excluded 53 patients because they did not reach landmark age 21
176 years. As a result, the final study group consisted of 288 patients, which exceeded the
177 minimum total sample size of 268 patients required to avoid study imprecision. A screening
178 of 279 autopsies with death by ATAAD in 162 men and 117 women at a mean age of 64 ± 15
179 years did not identify patients with pre-mortem diagnosis of MFS ([Figure S1](#)). The 53 patients
180 who were excluded from the study because they had not reached the landmark age of 21 years
181 had lower mean age at diagnosis, as expected, lower mean age at first contact with
182 VASCERN-GE, lower systemic score points, and lower frequency of genetic testing in the
183 index patients than the study patients, and only two of them required RAA, and none
184 experienced ATAAD or death ([Table S3](#)). Among the 26 patients who discontinued follow-
185 up, the study variables were similar to all other study patients, and we identified specific
186 reasons for discontinuation in 17 of them (65.4%; [Table S4](#)). Study groups

187

188 With a mean age of 28.5 ± 15.9 years at MFS diagnosis (1-80 years), the study cohort included
189 169 patients with late (58.7%) and 119 patients with early MFS diagnosis (41.3%; [Figure 1](#)).
190 The distribution of male sex, sporadic occurrence of MFS, and residence inside metropolitan
191 area was comparable between both diagnosis groups. However, patients with late MFS
192 diagnosis were older at first contact with VASCERN-GE, systemic Ghent score ≥ 7 points,
193 OPT initiation and RAA before the age of 21 years, and relatives of index patients were less

194 common, and genetic testing of index patients was more common than with early MFS
195 diagnosis ([Table 1](#)).

196 **Outcomes**

197 Follow-up time from the age 21 years to most recent contact with VASCERN-GE was longer
198 (30.4 ± 12.2 versus 17.4 ± 14.6 years; $P<0.001$), time of care at VASCERN-GE was shorter
199 (10.1 ± 5.6 versus 12 ± 5.5 years; $P=0.010$), but the number of transthoracic echocardiography
200 examinations per year, and loss to follow-up was comparable in patients with late and early
201 MFS diagnosis. Patients were more likely to experience primary ($P<0.001$) and secondary
202 outcomes with late vs early MFS diagnosis ($P<0.001$). Patients underwent a total of 164 RAA
203 procedures (56.9%). There were 23 RAA before the age of 21 years, but these were less
204 frequent with late vs early MFS diagnosis ($P<0.001$; [Table 2](#)). There were 141 RAA at or
205 after age 21 years. Of these, timely RAA only showed a trend towards differences ($P=0.082$),
206 but delayed RAA for aneurysms $>5.0\text{cm}$ or for ATAAD was more common with late vs early
207 MFS diagnosis ($P<0.001$). All 42 RAA for ATAAD and all 11 RAA with isolated supra-
208 coronary replacement were performed with late MFS diagnosis ([Table 3](#)).

209 **Primary outcome**

210 Kaplan-Meier curve analysis showed a higher risk for delayed RAA with late versus early
211 MFS diagnosis. At the age of 50 years, only 9% with early vs 44% with late MFS diagnosis
212 underwent delayed RAA (log-rank $P<0.001$; [Figure 2](#)). Delayed RAA for ATAAD was
213 performed only with late MFS diagnosis. Multivariate analysis identified late MFS diagnosis
214 as an independent predictor of the primary outcome (hazard ratio [HR] 7.39; 95% CI 2.68 to
215 20.37; $P<0.001$) and confirmed male sex as an additional predictor (HR 1.72; 95% CI 1.09 to
216 2.71; $P=0.020$; [Figure 3](#)).

217 **Secondary outcome**

218 Kaplan-Meier curve analysis revealed higher risk for death with late versus early MFS
219 diagnosis (log-rank $P < 0.025$; [Figure 4](#)). Multivariate analysis revealed late MFS diagnosis as
220 an independent predictor of death (HR 4.68; 95% CI 1.17 to 18.80; $P = 0.029$), and RAA
221 before the age of 21 years as an additional predictor (HR 14.58; 95% CI 3.80 to 55.85;
222 $P < 0.001$; [Figure 5](#)). Kaplan-Meier curve analysis illustrates the higher risk of death with RAA
223 before the age of 21 years (log-rank $P < 0.001$; [Figure S2](#)).

224 **Sub-analyses**

225 First, we analyzed the primary outcome separately for RAA for aneurysms > 5.0 cm and for
226 ATAAD. Kaplan-Meier curve analysis revealed higher risk with late versus early MFS
227 diagnosis for both, delayed RAA for aneurysms > 5.0 cm (log-rank $P = 0.040$; [Figure S3](#)), and
228 for delayed RAA for ATAAD ($P < 0.001$; [Figure S4](#)). Multivariate Cox regression analysis
229 confirmed a marginal association of late MFS diagnosis with delayed RAA for aneurysms
230 > 5.0 cm (HR 2.71; 95% CI 0.94 to 7.81; $P = 0.065$; [Figure S5](#)). Cox regression analysis was not
231 performed for delayed RAA for ATAAD, because there were no events with early MFS
232 diagnosis.

233

234 Second, we analyzed MFS diagnosis by the time before or after RAA and by the time before
235 death. Diagnosis was established before RAA in all 44 RAA with early MFS diagnosis,
236 whereas in the late MFS diagnosis group, MFS was diagnosed after RAA in all 5 RAA before
237 the age of 21 years, in 2 of 44 timely RAA at diameters ≤ 5.0 cm (2.9%), in 6 of 32 delayed
238 RAA for aneurysms > 5.0 cm (18.8%), and in 33 of 42 delayed RAA for ATAAD (78.6%;
239 $P < 0.001$; [Table 3](#); [Figure S6, upper panel](#)). The 113 survivors with early MFS diagnosis had a
240 significantly longer life with MFS diagnosis (23 ± 15.5 years) than 149 survivors (11.4 ± 15.5

241 years) and 24 decedents with late MFS diagnosis (10 ± 6.4 years; $P<0.001$; [Figure S6, lower](#)
242 [panel](#)).

243

244 Third, we analyzed causes of death. All deaths were cardiovascular, with the immediate cause
245 of death being sudden unexplained death in 17 patients, heart failure or aortic disease in 7
246 patients each, and sepsis after cardiovascular surgery in 2 patients. Analysis of deaths by
247 initial cardiovascular procedure showed that 13.9% of delayed RAA for aneurysms >5.0 cm,
248 17.3% of RAA before age 21 years, and 26.2% of delayed RAA for ATAAD ultimately
249 resulted in death. Before their final death, approximately 50% of these patients required at
250 least one additional cardiovascular procedure ([Table S5](#)).

251

252 Finally, for validation of outcomes we compared the current study cohort of 341 patients with
253 MFS with data from German health insurance claims. The overall mortality was comparable
254 to that of MFS and it was significantly lower than that of degenerative aortic disease ([Figure](#)
255 [S7](#)).

256 **Discussion**

257 To our knowledge, this is the first study to examine the effects of a late MFS diagnosis on
258 long-term outcomes. Our main finding is that a late diagnosis of MFS is associated with
259 higher rates of urgent and emergent aortic operations, and higher cardiovascular mortality.
260 Our findings reinforce recommendations for early detection of MFS. The study cohort and
261 outcomes were representative of MFS in the general population (2). Late diagnosis of MFS,
262 defined as at age ≥ 21 years based on aortic risk and the median age of MFS diagnosis in a
263 national cohort, was common in our study cohort (41.3%) (3). A late MFS diagnosis related to
264 genetic testing in index patients rather than in family members, and to milder MFS
265 phenotypes (4). Late diagnosis carried an 8.01-fold risk of delayed RAA (5) and a 2.8-fold

266 risk of death (6). These results underscore the importance of research and interventions to
267 reduce late MFS diagnosis (6). The subjects (1-6) are discussed below by number.

268 **1. Scoping review**

269 The scoping review of Medline extracted 119 records with statements on the prognostic
270 impact of the time of diagnosis of MFS ([Figure S8](#)). In 113 of these reports, the prognostic
271 significance of the time of diagnosis was emphasized, however without direct evidence. Only
272 6 studies measured the time of diagnosis ^{6, 11, 16-19}: One study used questionnaires to examine
273 the time between the first symptoms and the final diagnosis in 430 patients ¹⁶. Another
274 retrospective study of 66 adults with MFS compared outcomes of 27 patients with a diagnosis
275 before and 39 with a diagnosis after the onset of adulthood ¹⁷. In a study of administrative
276 data from 389 patients with MFS, the delay in diagnosis was measured in days from the first
277 symptoms to the final diagnosis ¹⁸. Finally, three Danish studies with administrative data
278 reported age at initial diagnosis ¹¹, time of diagnosis in relation to aortic events ⁶, and
279 pregnancy ([Table S6](#)) ¹⁹. EURORDIS, not listed in Medline, measured diagnostic delays
280 using questionnaire responses of 682 families with MFS ²⁰. Therefore, this scoping review
281 documents consensus on the prognostic importance of time at diagnosis, but sparse data,
282 heterogeneous methods and varying definitions were inappropriate for time-to-event analyses.

283 **2. Representativeness of the cohort and outcomes**

284 The proportion of patients with MFS in the study cohort to the total number of inhabitants in
285 the Hamburg metropolitan area equalled 5.7 patients per 100,000 inhabitants, which was close
286 to the prevalence of 6.5 individuals with MFS per 100,000 in the Danish population ¹¹.
287 Comparison of the current study cohort of 341 patients with MFS with data from German
288 health insurance claims revealed an overall mortality comparable to that of MFS and
289 significantly lower than that of degenerative aortic disease ([Figure S7](#)).

290 **3. Commonness of late diagnosis**

291 In this study, the median age of 20 years at diagnosis was high, but comparable to 19 years
292 median age in the Danish study ¹¹. Similarly, the time between first consultation to diagnosis
293 was 2.8 years in the French study ¹⁶, 2.0 years in 50% of patients in EURORDIS ²⁰, and a
294 median of 641 days in the German study ¹⁸. Therefore, the widespread prevalence of late MFS
295 diagnosis is a well-documented problem.

296 **4. Causes of late diagnosis**

297 Genetic cascade testing can diagnose MFS young family members of index patients with
298 MFS despite their own mild phenotype. However, cascade testing was performed less
299 frequently in late (11.8%) than in early MFS diagnosis (31.1%; $P < 0.001$). Moreover, severe
300 MFS phenotypes, as indicated by systemic Ghent score ≥ 7 points, RAA before the age of 21
301 years, and younger age at timely RAA (≤ 5.0 cm), were more common in early vs late MFS
302 diagnosis. Therefore, less cascade testing and milder phenotypes related to late MFS
303 diagnosis.

304 **5. Causes and consequences of delayed RAA**

305 With a hazard ratio > 4.25 , the independent effect of late MFS diagnosis on the risk of delayed
306 RAA was huge in this study ¹⁴. The risk of a late MFS diagnosis was confirmed by separate
307 analysis of delayed RAA for aneurysm > 5.0 cm and for ATAAD. The quality of expert care
308 was comparable in early and late MFS diagnosis, as suggested by similar frequency of
309 echocardiography, timely RAA, and number of losses to follow-up. However, expert care
310 started earlier, lasted longer, and lead to OPT before age 21 years only with early diagnosis.
311 Similarly, late MFS diagnosis resulted in delayed RAA, since only with late MFS diagnosis
312 MFS was diagnosed after RAA, with the highest frequency in delayed RAA for ATAAD

313 (81%). Finally, guidelines discourage supra-coronary RAA in MFS ¹. However, this study
314 documents 11 supra-coronary RAA procedures with late vs none with MFS diagnosis.

315 **6. Causes of death**

316 With a hazard ratio >4.25, the independent effect of late MFS diagnosis on the risk of death
317 was also huge ¹⁴. The majority of deaths occurred after delayed RAA (16/33). In addition, in
318 all 4 patients with surgery of the descending aorta or mitral valve surgery as initial
319 cardiovascular procedure with lethal outcome later on, MFS diagnosis was also delayed until
320 after surgery. This study identified RAA before the age 21 years as another independent
321 predictor of death in MFS, probably because of severe MFS phenotype. Both, in delayed
322 RAA and RAA before the age of 21 years subsequent cardiovascular surgeries were frequent
323 and contributed to ultimate death ([Table S5](#)).

324 **7. Future interventions**

325 Our data suggest that early diagnosis leads to timely operation with good outcomes in MFS.
326 Our analysis could be the foundation of a controlled trial testing population-based screening
327 for MFS, using genetic analysis, established scores such as the Sheikhzadeh Score ²¹ and the
328 Kid-Short Marfan Score ²², or imaging of the aortic diameter to improve outcomes in this
329 condition. Medical education programs for frontline caregivers and public campaigns to raise
330 awareness of rare diseases, dissemination of screening tools, databases and decision support
331 systems, improved coordination of diagnostic processes, strengthening of patient advocacy
332 organizations ²⁰, and wider use of genetic testing may be appropriate to enable timely
333 diagnosis of MFS in more patients.

334 **Study limitations**

335 Strengths of the study are the relatively large sample size, the verification of MFS and its
336 genetic cause at a single reference center, the representativeness of the cohort for MFS in the

337 population, the long follow-up period and careful capture of outcomes. A comprehensive
338 analysis of deaths due to ATAAD in our region confirms that we did not miss any patients
339 who died of MFS-related aortic aneurysm. Weaknesses include the combination of
340 prospective and retrospective data collection and the single reference-center patient
341 recruitment. We aimed to mitigate these weaknesses by adding analyses from National
342 Insurance data suggesting that our data set captures a representative sample of patients with
343 MFS. We applied the GRADE steps to assess the certainty of evidence and calculated a
344 GRADE score of 4 ([Table S7](#), [Table S8](#)). Prospective external validation of our findings is
345 desirable, e.g. in other large referral centers²². This analysis is largely limited to patients of
346 European ancestry. Outcomes in other ethnicities may differ. The analysis is also limited to
347 *FBNI*-positive MFS. Results in other hereditary thoracic aortic diseases may differ.

348 **Conclusions**

349 This study demonstrates that a late diagnosis of MFS is associated with a higher rate of
350 delayed aortic surgery, defined as RAA for aortic aneurysms >5.0cm or RAA for ATAAD,
351 and death. Time of diagnosis of MFS should be considered as a criterion for quality of care.
352 Medical education programs, public awareness campaigns, screening tools, rare disease
353 databases, decision support systems, better coordination of diagnostic procedures,
354 strengthening of patient organizations, and wider use of genetic testing may be appropriate
355 measures to reduce the age at diagnosis of MFS.

Tables

Table 1. Study groups

Variables	All patients (n = 288)	Diagnosis of Marfan syndrome according to age		P*
		Early (<21 years; n = 119)	Late (≥21 years; n = 169)	
Age at diagnosis of Marfan syndrome (years)	28.5 ± 15.9	13.5 ± 5.3	39.2 ± 11.7	<.001
Age at first contact with VASCERN-GE (years)	35.2 ± 15.1	26.5 ± 15.1	41.4 ± 11.8	<.001
Male sex	130 (45.1)	49 (41.2)	81 (47.9)	.280
Systemic Ghent score ≥7 points	214 (74.3)	96 (80.7)	118 (69.8)	.041
OPT before the age of 21 years	63 (21.9)	62 (52.1)†	1 (0.6)‡	<.001
• Duration of OPT until age of 21 years (years)	5.4 ± 4	5.5 ± 4	0.2	.079
RAA before the age of 21 years	23 (8)	19 (16)	4 (2.4)§	<.001
RAA before the age of 21 years: surgical techniques				.122
• Supra-coronary replacement	1		1	
• Composite grafting (Bentall)	6	5	1	
• Aortic valve-sparing technique (David)	16	14	2	
Sporadic occurrence of Marfan syndrome	122 (42.4)	50 (42)	72 (42.6)	1.000
Genetic testing of index patients	231 (80.2)	82 (68.9)	149 (88.2)	<.001
• Relative of an index patient	50 (17.4)	34 (28.6)	16 (9.5)	<.001
Residence inside metropolitan area	217 (75.3)	88 (73.9)	129 (76.3)	.678

RAA; replacement of the ascending aorta; n = number of patients, OPT, optimal pharmaceutical treatment; VASCERN-GE, European Reference

Network on Rare Multisystemic Vascular Diseases, Germany.

*Kruskal-Wallis test or Fisher's generalized exact test

†Administration of beta-adrenergic blockers in 31 patients, angiotensin receptor blockers in 23 patients, and a combination of both in 8 patients.

‡Administration of beta-adrenergic blockers in one patient.

§One patient with type A acute ascending aortic dissection with a composite grafting (Bentall) at an age < 21 years (16-20 years of age).

Table 2. Outcomes

Variables	All patients (n = 288)	Diagnosis of Marfan syndrome according to age		P*
		Early (<21 years; n = 119)	Late (≥21 years; n = 169)	
Age at most recent contact (years)	46.2 ± 14.7	38.5 ± 14.7	51.6 ± 12.2	<.001
Time from age 21 years to most recent contact (years)	25.2 ± 14.7	17.5 ± 14.7	30.6 ± 12.2	<.001
Time of care at VASCERN-GE (years)	10.9 ± 5.6	12 ± 5.5	10.1 ± 5.6	.010
Lost to follow-up	26 (9)	7 (5.9)	19 (11.2)	.086
Number of TTE examinations per year	1.3 ± 0.7	1.2 ± 0.7	1.3 ± 0.7	.323
Delayed RAA (primary outcome)	78 (27.1)	4 (3.4)	74 (43.8)	<.001
Age at primary outcome (years)	38.7 ± 10	34.6 ± 10.2	39 ± 10	.549
Diagnosis of Marfan syndrome after surgery	38 (48.7)	0	38 (48.6)	.116
Time from primary outcome to diagnosis (years)	4.8 ± 6.3		4.8 ± 6.3	
Death from all causes (secondary outcome)	33 (11.5)	3 (2.6)	30 (17.8)	<.001
Age at death (years)	57.7 ± 16.9	42.9 ± 31.8	59.2 ± 14.8	.379
Time with diagnosis of Marfan syndrome before death (- years)	-11.2 ± 10.7	-26.6 ± 28.5	-9.7 ± 6.6	<.001

n, number of patients; RAA, replacement of the ascending aorta, TTE, transthoracic echocardiography; VASCERN-GE, European Reference Network on Rare Multisystemic Vascular Diseases, Germany.

*Kruskal-Wallis test or Fisher's generalized exact test

Table 3. Repair of the ascending aorta at or after the age of 21 years

Variables	All patients (n = 288)	Diagnosis of Marfan syndrome according to age		P*
		Early (<21 years; n = 119)	Late (≥21 years; n = 169)	
Timely RAA for diameters ≤ 5.0 cm	63 (21.9)	21 (17.6)	42 (24.9)	.151
Age at surgery (years)	37.6 ± 12.6	32.9 ± 10.8	40 ± 12.8	.004
Preoperative diameter of the ascending aorta (cm)	4.8 ± 0.3	4.8 ± 0.3	4.7 ± 0.2	.492
Diagnosis of MFS after surgery/all RAA ≤ 5.0 cm	2/63	0/21	2/42	.548
Delayed RAA for aneurysm >5.0 cm	36 (12.5)	4 (3.4)	32 (18.9)	<.001
Age at surgery (years)	40 ± 10	34.6 ± 10.2	40.7 ± 9.9	.344
Preoperative diameter of the ascending aorta (cm)	6.0 ± 0.8	6.8 ± 0.7	5.9 ± 0.8	.015
Diagnosis of MFS after surgery/all RAA for aneurysm >5.0 cm	6/36 (16.7)	0/4	6/32 (18.8)	1.000
Delayed RAA for ATAAD	42 (14.6)	0	42 (24.9)	<.001
Age at surgery (years)	37.7 ± 10		37.7 ± 10	
Diagnosis of MFS after surgery/all ATAAD repairs	34/42		34/42	
All RAA procedures at or after the age of 21 years	141 (49)	25 (21)	116 (68.6)	<.001
Age at surgery (years)	3.8 ± 1.1	26.7 ± 11.2	38.5 ± 11.8	<.001
Diagnosis of MFS after surgery/all RAA procedures	42/141 (29.8)	0/25	42/116 (26.2)	<.001
Surgical techniques all RAA procedures				.056
• Supra-coronary replacement	10	0	10	
• Composite grafting (Bentall)	41	4	37	
• Aortic-valve-sparing technique (David)	90	21	69	

RAA, replacement of the ascending aorta; ATAAD, acute type A aortic dissection, n = number of patients

*Kruskal-Wallis test or Fisher's generalized exact test

Figures

Figure 1. Diagnosis of Marfan syndrome according to age

Number of patients with Marfan syndrome by age at diagnosis during the study period 2008 to 2021. Dashed lines indicate the age when 10, 25, 50 and 75 % of patients are diagnosed.

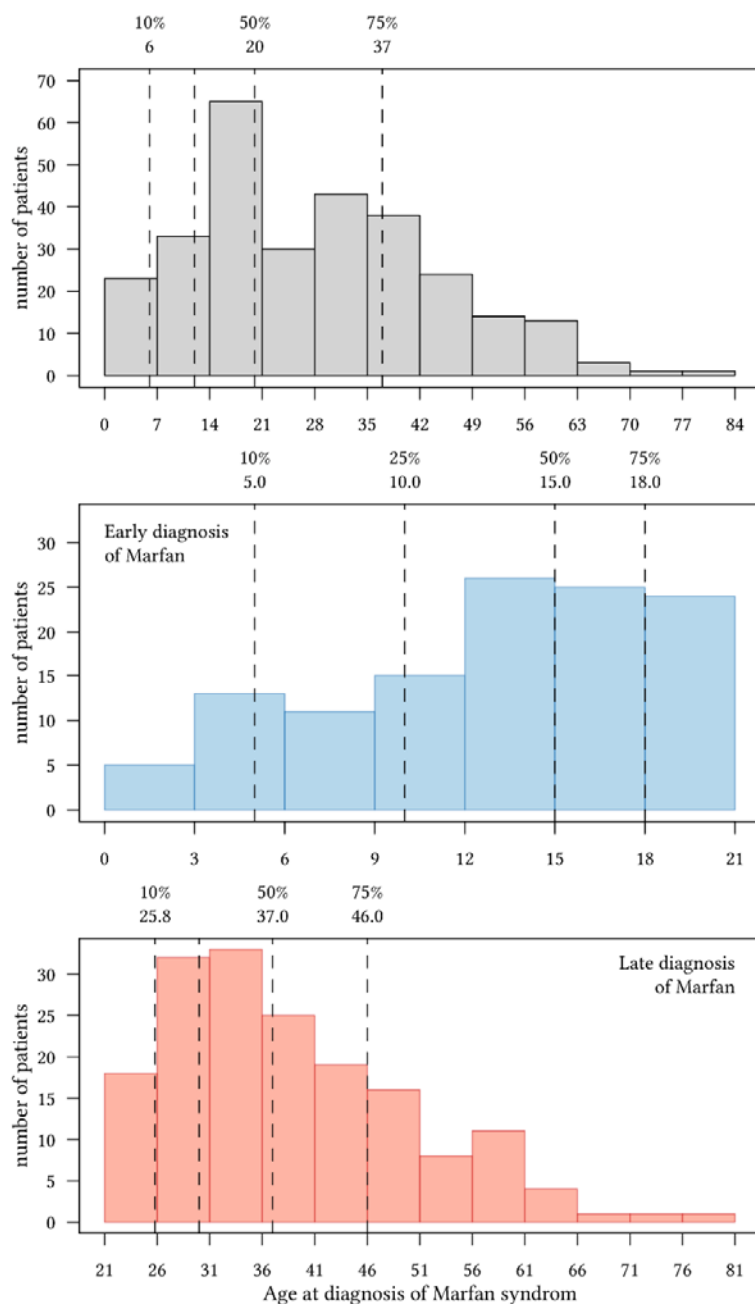


Figure 2. Kaplan-Meier estimates of primary outcome

The time-to event analysis from landmark age 21 years to primary outcome, defined as delayed replacement of the ascending aorta (RAA) for diameters >5.0cm or for acute type A aortic dissection. Comparisons were made for early (age <21 years) versus late diagnosis of Marfan syndrome (age ≥21 years).

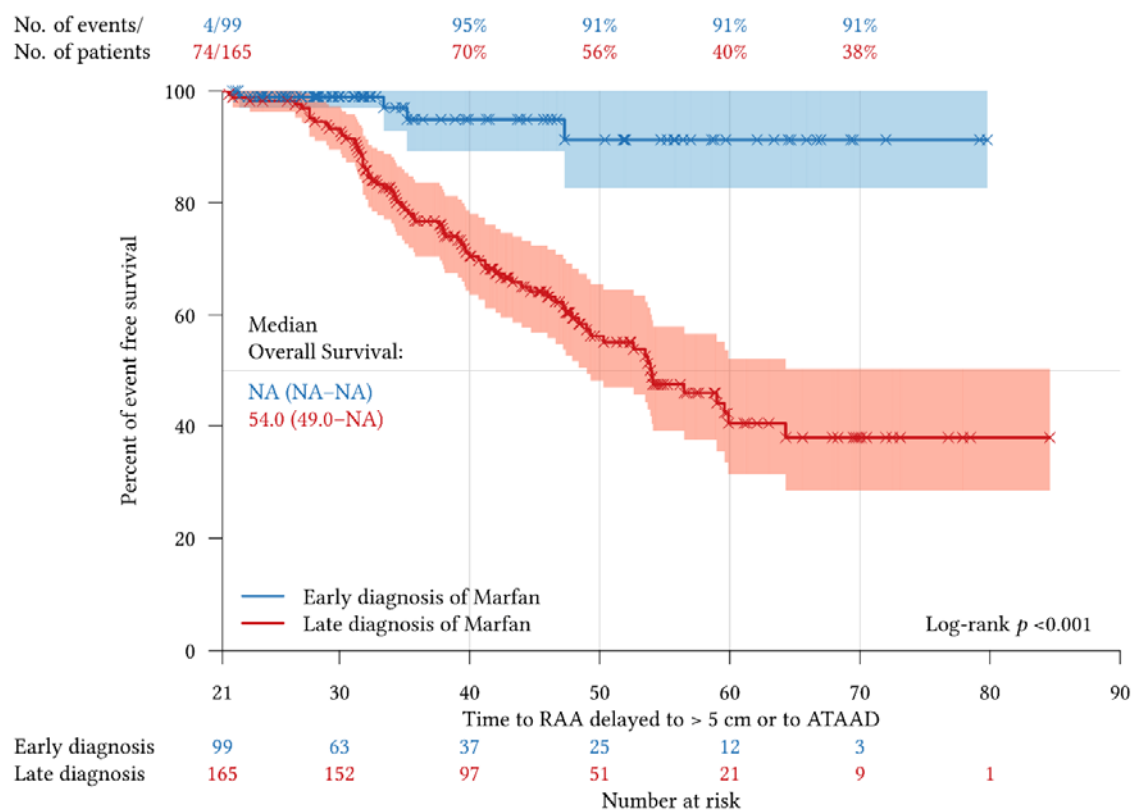


Figure 3. Forest plot of multivariate Cox regression analysis of primary outcome

The primary outcome was delayed replacement of the ascending aorta (RAA) for aortic diameters $>5.0\text{cm}$ or for acute type A aortic dissection (ATAAD). Multivariate Cox regression analysis examined the independent association of late diagnosis of Marfan syndrome and late optimal pharmacological therapy (OPT), both defined by age ≥ 21 years, with primary outcomes after adjustment for 5 other study variables with known risk of aortic events. The grey vertical line represents the hazard ratio for the overall study population.

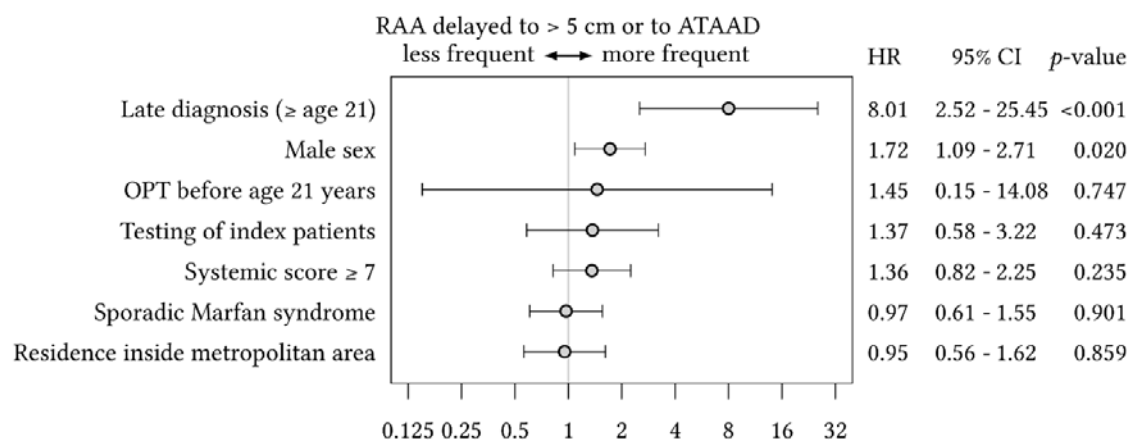


Figure 4. Kaplan-Meier estimates of secondary outcome

The time-to event analysis from landmark age 21 years to secondary outcome, defined as all-cause mortality. Comparisons were made for early (age <21 years) versus late diagnosis of Marfan syndrome (age ≥21 years).

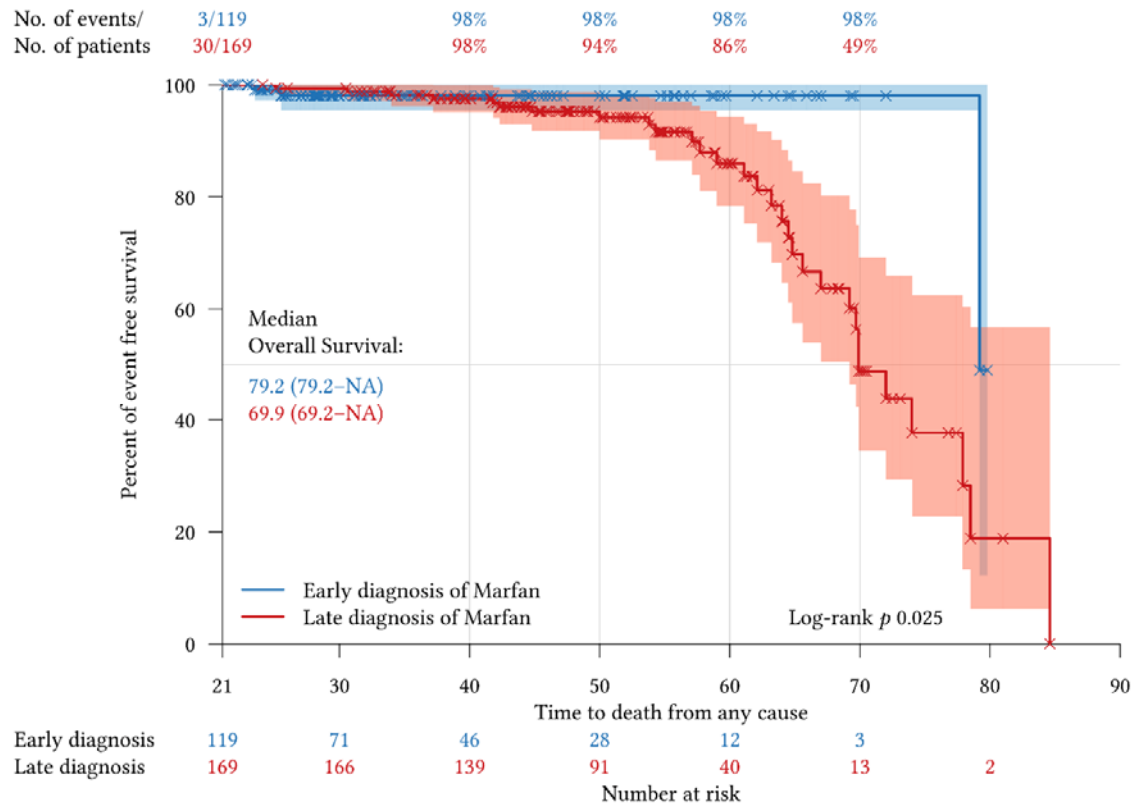
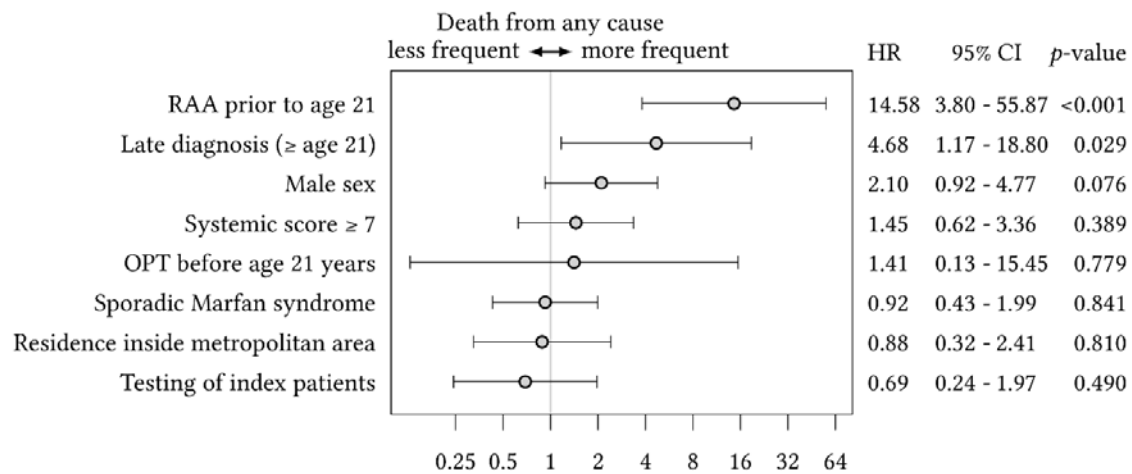


Figure 5. Forest plot of multivariate Cox regression analysis of secondary outcome

The secondary outcome was all-cause mortality. Multivariate Cox regression analysis examined the independent association of late diagnosis of Marfan syndrome and late optimal pharmacological therapy (OPT) initiation, both defined by age ≥ 21 years, with secondary outcomes after adjustment for 5 other study variables with known risk of aortic events. The grey vertical line represents the hazard ratio for the overall study population, ARR identifies replacement of the ascending aorta.



References

1. Erbel R, Aboyans V, Boileau C, Bossone E, Bartolomeo RD, Eggebrecht H, Evangelista A, Falk V, Frank H, Gaemperli O, Grabenwöger M, Haverich A, Iung B, Manolis AJ, Meijboom F, Nienaber CA, Roffi M, Rousseau H, Sechtem U, Sirnes PA, Allmen RSv, Vrints CJM, Zamorano JL, Achenbach S, Baumgartner H, Bax JJ, Bueno H, Dean V, Deaton C, Erol Ç, Fagard R, Ferrari R, Hasdai D, Hoes A, Kirchhof P, Knuuti J, Kolh P, Lancellotti P, Linhart A, Nihoyannopoulos P, Piepoli MF, Ponikowski P, Sirnes PA, Tamargo JL, Tendera M, Torbicki A, Wijns W, Windecker S, Nihoyannopoulos P, Tendera M, Czerny M, Deanfield J, Mario CD, Pepi M, Taboada MJS, Sambeek MRv, Vlachopoulos C, Zamorano JL, Grimm M, Musayev O, Pasquet A, Kušljugić Z, Cikes M, Georghiou GP, Stasek J, Molgaard H, Kōvask S, Kytö V, Jondeau G, Bakhtashvili Z, von Kodolitsch Y, Tsioufis C, Temesvári A, Rubinshtein R, Antonini-Canterin F, Lunegova O, Stradins P, Chammas E, Jonkaitiene R, Cassar A, Bjørnstad K, Widenka K, Sousa Uva M, Lighezan D, Perunicic J, Madaric J, Vilacosta I, Bäck M, Mahdhaoui A, Demirbag R and Kravchenko I. 2014 ESC Guidelines on the diagnosis and treatment of aortic diseases. *Eur Heart J*. 2014;35:2873-2926.
2. Roman MJ and De Backer J. Hereditary thoracic aortic disease: How to save lives. *J Thorac Cardiovasc Surg*. 2021.
3. Richards S, Aziz N, Bale S, Bick D, Das S, Gastier-Foster J, Grody WW, Hegde M, Lyon E, Spector E, Voelkerding K and Rehm HL. Standards and guidelines for the interpretation of sequence variants: a joint consensus recommendation of the American College of Medical Genetics and Genomics and the Association for Molecular Pathology. *Genetics in medicine : official journal of the American College of Medical Genetics*. 2015;17:405-24.
4. Loeys BL, Dietz HC, Braverman AC, Callewaert BL, De Backer J, Devereux RB, Hilhorst-Hofstee Y, Jondeau G, Faivre L, Milewicz DM, Pyeritz RE, Sponseller PD,

Wordsworth P and De Paepe AM. The revised Ghent nosology for the Marfan syndrome. *J Med Genet.* 2010;47:476-85.

5. Hennekam RC. Severe infantile Marfan syndrome versus neonatal Marfan syndrome. *Am J Med Genet A.* 2005;139:1.

6. Groth KA, Stochholm K, Hove H, Kyhl K, Gregersen PA, Vejlsturp N, Østergaard JR, Gravholt CH and Andersen NH. Aortic events in a nationwide Marfan syndrome cohort. *Clinical Research in Cardiology.* 2017;106:105-112.

7. von Elm E, Altman DG, Egger M, Pocock SJ, Gøtzsche PC, Vandenbroucke JP and for the SI. The Strengthening the Reporting of Observational Studies in Epidemiology (STROBE) Statement: Guidelines for Reporting Observational Studies. *PLoS Med.* 2007;4:e296.

8. Nayak SS, Schneeberger PE, Patil SJ, Arun KM, Suresh PV, Kiran VS, Siddaiah S, Maiya S, Venkatachalagupta SK, Kausthubham N, Kortüm F, Rau I, Wey-Fabrizius A, Van Den Heuvel L, Meester J, Van Laer L, Shukla A, Loeyls B, Girisha KM and Kutsche K. Clinically relevant variants in a large cohort of Indian patients with Marfan syndrome and related disorders identified by next-generation sequencing. *Sci Rep.* 2021;11:764.

9. Schoenhoff FS, Jungi S, Czerny M, Roost E, Reineke D, Matyas G, Steinmann B, Schmidli J, Kadner A and Carrel T. Acute aortic dissection determines the fate of initially untreated aortic segments in Marfan syndrome. *Circulation.* 2013;127:1569-75.

10. Statistikamt Nord, Fortschreibung auf Grundlage des Zensus 2011. 2019.

11. Groth KA, Hove H, Kyhl K, Folkestad L, Gaustadnes M, Vejlsturp N, Stochholm K, Østergaard JR, Andersen NH and Gravholt CH. Prevalence, incidence, and age at diagnosis in Marfan Syndrome. *Orphanet journal of rare diseases.* 2015;10:153.

12. Behrendt C-A, Kreutzburg T, Kuchenbecker J, Panuccio G, Dankhoff M, Spanos K, Kouvelos G, Debus S, Peters F and Kölbel T. Female Sex and Outcomes after Endovascular

Aneurysm Repair for Abdominal Aortic Aneurysm: A Propensity Score Matched Cohort Analysis. *Journal of Clinical Medicine*. 2021;10:162.

13. Tricco AC, Lillie E, Zarin W, O'Brien KK, Colquhoun H, Levac D, Moher D, Peters MDJ, Horsley T, Weeks L, Hempel S, Akl EA, Chang C, McGowan J, Stewart L, Hartling L, Aldcroft A, Wilson MG, Garritty C, Lewin S, Godfrey CM, Macdonald MT, Langlois EV, Soares-Weiser K, Moriarty J, Clifford T, Tunçalp Ö and Straus SE. PRISMA Extension for Scoping Reviews (PRISMA-ScR): Checklist and Explanation. *Annals of internal medicine*. 2018;169:467-473.

14. Huguet A, Hayden JA, Stinson J, McGrath PJ, Chambers CT, Tougas ME and Wozney L. Judging the quality of evidence in reviews of prognostic factor research: adapting the GRADE framework. *Systematic Reviews*. 2013;2:71.

15. Verhagen JMA, Kempers M, Cozijnsen L, Bouma BJ, Duijnhouwer AL, Post JG, Hilhorst-Hofstee Y, Bekkers SCAM, Kerstjens-Frederikse WS, van Brakel TJ, Lambermon E, Wessels MW, Loeys BL, Roos-Hesselink JW and van de Laar IMBH. Expert consensus recommendations on the cardiogenetic care for patients with thoracic aortic disease and their first-degree relatives. *International Journal of Cardiology*. 2018;258:243-248.

16. Hirtzlin I, Kiyela-Loubaki F and Jondeau G. [Medical histories of patients with Marfan's syndrome]. *Arch Mal Coeur Vaiss*. 2004;97:855-60.

17. Willis L, Roosevelt GE and Yetman AT. Comparison of clinical characteristics and frequency of adverse outcomes in patients with Marfan syndrome diagnosed in adulthood versus childhood. *Pediatr Cardiol*. 2009;30:289-92.

18. Roll K. The influence of regional health care structures on delay in diagnosis of rare diseases: The case of Marfan Syndrome. *Health policy (Amsterdam, Netherlands)*. 2012;105:119-127.

19. Groth KA, Nielsen BB, Sheyanth IN, Gravholt CH, Andersen NH and Stochholm K. Maternal health and pregnancy outcome in diagnosed and undiagnosed Marfan syndrome: A registry-based study. *Am J Med Genet A*. 2021;185:1414-1420.
20. Madelin R. EURORDIS. The voice of 12,000 patients. . 2009.
21. Sheikhzadeh S, Kusch ML, Rybczynski M, Kade C, Keyser B, Bernhardt AM, Hillebrand M, Mir TS, Fuisting B, Robinson PN, Berger J, Lorenzen V, Schmidtke J, Blankenberg S and von Kodolitsch Y. A simple clinical model to estimate the probability of Marfan syndrome. *QJM*. 2012;105:527-535.
22. Mueller GC, Stark V, Steiner K, Weil J, von Kodolitsch Y and Mir TS. The Kid-Short Marfan Score (Kid-SMS) - an easy executable risk score for suspected paediatric patients with Marfan syndrome. *Acta Paediatr*. 2013;102:e84-9.