

Metabolic reprogramming induced by periodic dietary restriction of animal products has beneficial effects on human health

Konstantinos Rouskas^{1,2*}, Ozvan Bocher^{3*}, Panagiotis Mantas¹, Anargyros Skoulakis¹, Alexandros Simistiras¹, Christina Emmanouil¹, Y.C. Park³, Alexandros Dimopoulos¹, Stavros Glentis¹, Gabi Kastenmüller^{4,5}, Eleftheria Zeggini^{3,6}, Antigone S. Dimas^{1,3**}.

¹ Institute for Bioinnovation, Biomedical Sciences Research Center 'Alexander Fleming', Fleming 34, 16672, Vari, Greece

² Institute of Applied Biosciences, Centre for Research & Technology Hellas, Thessaloniki, Greece

³ Institute of Translational Genomics, Helmholtz Zentrum München – German Research Center for Environmental Health, Neuherberg, Germany

⁴ Institute of Computational Biology, Helmholtz Zentrum München – German Research Center for Environmental Health, Neuherberg, Germany

⁵ German Center for Diabetes Research (DZD), Neuherberg, Germany

⁶ Technical University of Munich (TUM) and Klinikum Rechts der Isar, TUM School of Medicine and Health, Munich, Germany

* equal contribution

** corresponding author dimas@fleming.gr

Abstract

Dietary interventions constitute powerful approaches for disease prevention and treatment. However, the molecular mechanisms through which diet affects health remain underexplored in humans. Here, we compare plasma metabolomic and proteomic profiles between dietary states for a unique group of individuals who alternate between omnivory and animal product restriction (APR) for religious reasons. We find that short-term APR is associated with extensive metabolic reprogramming not detected in a control group of continuously omnivorous individuals. We identify reductions in the levels of branched-chain amino acids and of most lipid classes, driving a metabolic profile associated with decreased risk for all-cause mortality. We show that 23% of APR-associated proteins are drug targets, and highlight eight proteins displaying the greatest magnitude of change upon APR (FGF21, FOLR2, SUMF2, HAVCR1, PLA2G1B, OXT, HPGDS, SPP1). We find that APR-associated reprogramming improves metabolic health and emphasise high-value targets for pharmacological intervention.

Keywords

Dietary interventions, animal product restriction, metabolic health, all-cause mortality, metabolomics, proteomics, lipids, branched-chain amino acids, FGF21.

Main

Dietary intake shapes the growth of organisms, enables organ development and maintenance, has an impact on immune system function and ultimately influences health and lifespan^{1, 2, 3}. Extensive work in model organisms has shown that dietary interventions, including caloric restriction or restriction of particular nutrients, have prominent effects on health and lifespan through cellular pathways including DNA and histone methylation, DNA repair, protein synthesis, autophagy, antioxidant capacity, cell senescence, and ribosomal biogenesis^{1, 3}. In humans, targeted dietary interventions constitute a largely untapped resource for the prevention and management of chronic conditions and disease, but to reap their benefits it is crucial to understand the molecular mechanisms underlying effects on health. A study investigating sustained, moderate caloric restriction in humans demonstrated reductions in body fat, markers of inflammation and cardiometabolic risk factors, and improved mental health and cognition⁴. Furthermore, phospholipase PLA2G7 was identified as a likely mediator of the beneficial effects of caloric restriction in adipose tissue⁵. Extending this work, a recent study on prolonged, complete caloric restriction demonstrated the existence of a highly conserved, multi-organ response, enriched for extracellular matrix protein expression differences, and reported extensive non-metabolic adaptations to caloric restriction with positive, but also adverse effects on health⁶.

Studies exploring the effects of specific dietary patterns are also emerging, with plant-based diets in particular, having attracted a lot of interest^{7, 8}. Vegetarian and vegan individuals typically present with lower BMI, serum LDL cholesterol and blood pressure, compared to regular meat-eaters, but also with lower bone mineral density⁷. A recent study investigating effects of a two-week course of vegan versus ketogenic diets reported a striking shift in host immunity, with effects on the innate and adaptive immune systems respectively⁹. Effects were also reported on amino acid metabolism with a higher abundance of branched-chain amino acids (BCAAs) detected in the plasma of individuals consuming a ketogenic diet.

In the present study, we address the molecular impact of a dietary pattern followed by a unique group of Greek individuals who alternate between omnivory and animal product restriction (APR) for religious reasons. We compared plasma metabolomic and proteomic profiles between dietary states, and to profiles obtained in parallel from a group of continuously omnivorous individuals. We demonstrate extensive metabolic reprogramming

upon APR, including a prominent shift in the levels of over half of the 249 metabolites quantified, leading to a profile that has been associated with a reduced risk for all-cause mortality. We also highlight extensive changes in plasma proteomic profiles, with 62 out of the 264 proteins whose abundance was linked to APR, being targets for phase 1-4 drugs. We find that APR-associated changes have overall beneficial effects on human health and highlight high-value candidates for pharmacological intervention.

Results

Population sample description and study design. Following screening of over 1,000 candidate participants, we recruited 411 apparently healthy individuals from Thessaloniki, Greece for the FastBio (Religious Fasting Biology) study (**Fig. 1a, Text S1**). Participants belonged to one of two dietary groups: individuals who had undergone periodic APR for religious reasons, for at least ten years, and individuals who were continuously omnivorous. Periodically restricted (PR) individuals (N=200, ages 20-76 years) voluntarily alternate between APR and omnivory following the dietary regimen of the Greek Orthodox Church (**Text S2**). This involves APR through abstinence from meat, fish, dairy products and eggs (but not molluscs and shellfish) for 180-200 days annually, in a highly consistent manner. Restriction is practiced during four extended periods throughout the year, as well as on Wednesdays and Fridays of each week (**Fig. 1b**). Non-restricted (NR) individuals (N=211, ages 19-74 years) were continuously omnivorous and did not practice any type of dietary restriction. Participants were profiled at two timepoints: T1 in autumn, covering a period of omnivory for both dietary groups, and T2 in early spring, covering a three-to-four-week period of APR for PR individuals, during Lent (**Fig. 1b**). Typically, individuals practicing APR during this period, undergo restriction of protein (as a proportion of total energy) which is not accompanied by a decrease in total energy intake^{10,11}.

APR is associated with a prominent shift in metabolomic profiles. We sought to investigate how APR affects plasma metabolite levels through quantification of 249 metabolites. Following QC (**Fig. S1, Fig. S2**) we report results for 248 metabolites from 777 samples (193 PR at T1 and 190 PR at T2; 202 NR at T1 and 192 NR at T2). We find a prominent shift in metabolite profiles for the PR group with over half (N=168) of quantified metabolites detected at altered levels (differentially abundant metabolites (DAMs)) upon

restriction (**Fig. 2, Table 1**). In the NR group, a single DAM (pyruvate) was identified (**Fig. 2, Table 1**).

Most APR-associated changes (134 out of 168) involved decreased metabolite levels with reductions in multiple lipid classes including cholesterol, cholesterol esters, free cholesterol, phospholipids, lipids, ApoA1 and ApoB, sphingomyelins, and in the ratio of saturated to total fatty acids (SFA %). Lower levels of LDL-related lipids, and their major constituent ApoB, are associated with decreased risk of cardiovascular events¹², while decreased levels of HDL-related lipids, and their major constituent ApoA1, show associations in the opposite direction^{13, 14}. However, reductions in levels of HDL-related lipids were of lower magnitude than those reported for LDL-related lipids, as were ApoB level reductions compared to ApoA1. This may reflect the overall lower intake of animal fat upon APR and is in concordance with a recent study comparing omnivorous to vegan diets in twins¹⁵. Lipid composition was also modified upon APR with recorded changes in lipid proportions, especially for cholesterol and triglycerides from VLDL particles, the latter indicating an increased rate of triglyceride removal from the blood to the liver.

Eight out of the nine amino acids quantified were detected at different levels following APR, with a ~7% decrease recorded for absolute concentrations of total BCAAs, driven by decreases in valine (9%) and leucine (5%), but not isoleucine. Decreased levels were also detected for phenylalanine and tyrosine, whereas alanine, glutamine, glycine and histidine were found at higher levels upon restriction. BCAAs make up ~20% of amino acids in meat, fish, eggs and nuts¹⁶ and elevated levels in humans have been linked to poor health outcomes including obesity, type 2 diabetes and cardiovascular disease^{17, 18, 19}. BCAA restriction on the other hand has been linked to mildly reduced insulin resistance²⁰ and to increased levels of potent metabolic regulator FGF21 in some²¹, but not all studies²². Effects of APR were not observed for glucose levels in the present study. Protein restriction has been linked to decreased fasting blood glucose levels in overweight or obese males²³ and to decreased fasting plasma insulin levels in lean males²⁴. Absence of effects in our study may stem from the fact that FastBio comprises participants from both sexes who span the range of BMI. We also did not observe changes for triglyceride levels, but we report a striking pattern of increased proportions of triglycerides among lipids within lipoproteins.

Given the proximity of APR to a vegan diet, we compared our findings to those from a cross-sectional study investigating metabolite profiles in four dietary groups including vegans and meat-eaters²⁵. We replicated 82% of associations reported for the comparison of vegans to meat-eaters (**Extended Data Fig. 1**) and uncovered 58 previously unreported associations. These newly described metabolite changes include small VLDL, medium LDL, and large HDL classes, with decreases in cholesterol-associated levels upon APR. In addition, we describe significant differences in the levels of 27 metabolites not analysed in the above study, including total BCAAs, pyruvate and LDL- and medium HDL-related lipids (**Extended Data Fig. 1**).

APR-induced metabolomic changes are associated with reduced risk for all-cause mortality and beneficial effects against complex diseases. To investigate the impact of altered metabolite profiles on health, we applied a 14-metabolite score shown to reflect risk for all-cause mortality in a cross-sectional study, with lower scores associated with a lower mortality risk²⁶. Nine of the 14 the metabolites examined were DAMs in the PR group (VLDL size, PUFA by MUFA ratio, histidine, leucine, valine, phenylalanine, acetoacetate, XXL_VLDL_L, S_HDL_L) and upon APR, the mortality score decreased for PR (mean score 0.11 at T1 vs -0.91 at T2, $p = 0.011$), but not NR individuals (mean score 0.079 at T1 vs 0.70 at T2, $p = 0.431$) (**Extended Data Fig. 2**). We also investigated the impact of APR on metabolic health by comparing the differences observed between timepoints in the PR group, to associations described between metabolite levels and complex traits in the UK Biobank²⁷. Focusing on “diseases of the circulatory system” and “endocrine, nutritional and metabolic diseases” the associations described upon APR were compatible with a beneficial metabolite profile against cardiovascular outcomes, including acute myocardial infarction and chronic ischemic heart disease, and against diabetes, obesity, and dyslipidemia (**Extended Data Fig. 3a**). The differences in metabolite profiles between these diseases and APR are mostly driven by lipid-related classes, ketone bodies and fatty acid percentages, and overall, APR-related metabolite profiles cluster separately from associations with complex diseases (**Extended Data Fig. 3b**).

APR is associated with changes in the levels of multiple plasma proteins. We next sought to investigate how APR affects plasma protein levels. We quantified levels for 1,472 proteins and following QC (**Fig. S1, Fig. S2**), we report results for 1,464 proteins from 793

individuals (199 PR at T1 and 191 PR at T2; 208 NR at T1 and 195 NR at T2). We detected 410 and 201 proteins whose levels change from T1 to T2 (differentially abundant proteins (DAPs)) in the PR and NR groups, respectively (**Fig. 3, Table 1**). Protein level changes unique to each group were almost five-fold higher in PR compared to NR individuals, with increased levels of liver-derived pro-longevity hormone FGF21 being the most prominent change recorded, and was unique to the PR group. In addition to PR-unique changes, we found that 146 proteins changed levels in both groups, with the same direction of effect (shared DAPs), some of which likely capture seasonal effects. Top shared DAP, MNDA, a transcriptional regulator in cells of the granulocyte-monocyte lineage, displayed decreased levels at T2 in both groups. We²⁸ and others²⁹ have shown that neutrophils, which account for 40-70% of total white blood cells, display strong seasonal effects, with their numbers decreasing during spring. DAPs unique to the NR group were of lower effect sizes and significance and may also represent seasonal changes that are suppressed in PR individuals through APR. For example, top NR-unique DAP PPP1R9B is a substrate for GSK3 β , a crucial circadian clock regulator³⁰ while PCSK9, a target for LDL-lowering drugs, displays diurnal variation, with levels of daylight duration likely driving seasonal effects³¹.

Our most prominent APR-associated finding, FGF21 is a potent metabolic regulator, with key roles in regulation of energy homeostasis, lipid and glucose metabolism, and insulin sensitivity^{1, 32}. In humans and mice, FGF21 has been shown to be induced by dietary protein restriction, but not energy restriction³³. Its effects are mediated through direct action on adipose tissue, and through signalling to the brain, facilitating adaptive behavioural changes in feeding in mice³⁴. Transgenic expression or treatment with recombinant FGF21 in mice has been found to promote glucose tolerance, insulin sensitivity, and resistance to diet-induced obesity³⁵. Currently FGF21 is in clinical trials for conditions including type 2 diabetes, insulin resistance, obesity, and non-alcoholic steatohepatitis (**Table S1**). Although potent beneficial effects on lipid profiles have been reported, the end points of glycemic control have not been met³⁶ and the impact of FGF21 on glucose homeostasis in humans is not yet clear^{36, 37}. This highlights the complexity of FGF21 signalling, and the possible existence of FGF21 inactivation enzymes³² that block the action of FGF21. Fibroblast activation protein (FAP), is an enzyme that cleaves and inactivates FGF21 and is currently also being tested as a target in cancer treatment³⁸. We find that FAP levels decreased following APR, suggesting that the short half-life of FGF21 (0.5–1.5 hours) may be extended

through this dietary behaviour. To date, incomplete understanding of FGF21 biology in humans compromises the development of FGF21-based treatments.

Identifying proteins potentially involved in FGF21 signalling. To address the gap in our knowledge on how FGF21 mediates its effects in humans, we sought to map effects of FGF21 on other DAPs with the hypothesis that this approach could reveal proteins potentially linked to FGF21 signalling. We conducted differential abundance analysis on the 409 PR-identified DAPs (excluding FGF21) and additionally adjusted on FGF21 levels. No changes in DAPs were detected in the NR group, but in the PR group, 53 proteins were no longer significant, suggesting associations of FGF21 with their expression (**Table S2**). Evidence for links to FGF21 exists for some of these proteins (e.g. FGF23, EGFR and CCL2) (**Fig. S3**), but for the majority, their connection to FGF21 remains unknown. Such proteins with suggestive links to FGF21 include CCL11, a chemokine linked to the biogenesis of beige adipocytes, antioxidant enzyme SOD1, and extracellular matrix remodelling proteins MMP7 and MMP13.

Identifying proteins with the greatest magnitude of APR-associated changes and correlating with metabolite level changes. Due to pre-enrichment for specific biological functions of assayed proteins, we were underpowered to uncover over-represented pathways for detected DAPs (**Text S3**). To focus on proteins most affected by APR, we conducted a heterogeneity analysis aimed at identifying proteins where the effect size of changes from T1 to T2 was significantly different between the two dietary groups. Following correction for 1,432 independent tests (considering correlations amongst 1,464 tested proteins), we highlight eight proteins: FGF21, FOLR2, SUMF2, HAVCR1, PLA2G1B, OXT, HPGDS, and SPP1. Of these, all were PR-unique DAPs, with the exception of shared DAP SPP1, which however displayed a greater magnitude of change in PR individuals (**Fig. 4, Table 2**). Using a more permissive 5% FDR correction, we report 15 additional proteins (**Table S3**) and note that 14 out of these 23 proteins are currently in phase 1-4 clinical trials (**Table S1**). To explore potential links between APR-associated changes in metabolite and protein levels, we tested correlations between levels of the eight most heterogeneous proteins described above and all metabolites (**Text S4**). We report partially overlapping correlations for FGF21, SUMF2, HAVCR1 and OXT with 208 metabolites (**Table 2, Extended Data Fig. 4**). These include various lipid classes and amino acids, of which 150 were DAMs in the PR group.

Proteins with the greatest magnitude of APR-associated changes have mostly immunometabolic functions. In addition to FGF21, increased levels upon APR were recorded for FOLR2, SUMF2 and OXT. FOLR2 imports folate to the interior of cells and together with vitamin B12, a micronutrient found exclusively in animal products, is an essential compound of the folate and methionine cycles³⁹. Folate receptors are upregulated under conditions of folate deficiency⁴⁰. Deficiency of vitamin D can also mimic effects of folate deficiency resulting in high homocysteine levels, typically observed in individuals consuming plant-based diets⁷. APR-associated increased FOLR2 levels may therefore be a consequence of decreased vitamin B12 intake and higher levels of FOLR2 and FOLR1 (also an APR-associated DAP in the present study) were reported in a study comparing permanent vegans to meat-eaters⁸. Understanding the mechanisms of folate regulation is of pharmacological interest given that inhibition of folate metabolism blocks cellular proliferation and potentially contributes to cardiovascular health³⁹, with FOLR1, but not FOLR2 currently being investigated in clinical trials.

SUMF2 is an inhibitor of the enhancing effects of SUMF1 on sulfatases⁴¹. APR may therefore have inhibitory effects on sulfatase activity through increased levels of SUMF2, a protein that has not been investigated in clinical trials to date. Causal associations between SUMF2 and LDL cholesterol, total cholesterol, triglyceride levels and HDL cholesterol have been reported in a study exploring relationships between cardiometabolic traits and serum proteins⁴². In the present study we report correlation of SUMF2 with metabolites including VLDL, LDL and HDL particles and percentages, and with TG by PG ratio (**Table 2**).

OXT is a hypothalamic hormone known for its roles in parturition, lactation, social bonding, but also acts as a sensor of nutrient status⁴³. In humans, decreased circulating OXT levels have been recorded in individuals with obesity or diabetes, with OXT administration being explored as a treatment for obesity-related comorbidities⁴⁴ (**Table S1**). Linking effects of OXT and FGF21, a study in mice has suggested that OXT transcription in the brain is induced directly by FGF21, suppressing simple sugar preference and regulating food choice⁴⁵, although this observation has been challenged⁴⁶. Similarly to FGF21³⁴, OXT shapes macronutrient preference and affects weight control through a shift in metabolism from carbohydrate to fat utilization⁴³.

Decreased levels upon APR were detected for HAVCR1, PLA2G1B and HPGDS. HAVCR1 has roles in regulation of immune cell activity and renal regeneration⁴⁷, is abnormally expressed in a range of tumour types, and is upregulated during renal injury⁴⁷. It is currently in multiple clinical trials for indications linked to renal function (**Table S1**). In rat primary renal tubular epithelial cells, administration of the saturated fatty acid (SFA) palmitate was linked to upregulation of HAVCR1, but also of SPP1⁴⁸. Decreased HAVCR1 levels are consistent with the prominent reduction of SFA% detected upon APR, reflecting the lower intake of saturated fats, also typically observed for individuals consuming vegan diets²⁵. Lower levels of this protein were also found in non-meat-eating individuals in a cross-sectional study that compared non-meat-eaters to individuals who consume meat⁸.

PLA2G1B is a secreted phospholipase A2 produced by pancreatic acinar cells, that hydrolyses phosphoglycerides to glycerophospholipids and arachidonic acid⁴⁹. *Pla2g1b* knock-out mice display reduced phospholipid digestion and concurrent attenuation of diet-induced obesity, insulin resistance, and atherosclerosis, while pancreatic acinar cell-specific overexpression of *Pla2g1b* has been linked to increased phospholipid digestion and to exacerbation of diet-induced obesity and insulin resistance⁴⁹. PLA2G1B is currently being investigated in clinical trials for a range of cardiometabolic conditions (**Table S1**). Notably, downregulation of PLA2G7, also a member of the phospholipase A2 family, in human adipose tissue was found to drive caloric restriction-associated transcriptional reprogramming linked to mitochondrial bioenergetics, anti-inflammatory responses and longevity⁵. Adding to the idea that PLA2 protein family members influence pathways regulating longevity, genetic variants in *pla2g10* in rockfish, a clade including species that can live up to 205 years, have been associated to lifespan⁵⁰.

HPGDS is an enzyme that catalyses the conversion of PGH2 to PGD2, a prostaglandin acting as an early-phase mediator of inflammation⁵¹. PGD2 augments disease activity, such as asthma, through its ability to enhance the proinflammatory actions of macrophages and of resulting neutrophil activation⁵². Given its role in the development of inflammatory processes underlying allergic diseases, decreased levels of this protein may contribute to a tempering effect of APR on inflammation. HPGDS is currently being investigated in a clinical trial for pulmonary health (**Table S1**).

Finally, SPP1 (OPN) was detected at increased levels in both dietary groups from T1 to T2, but the magnitude of change was greater for PR individuals. SPP1 has functions in bone calcification, cell survival, proliferation and migration, and immune function and its expression is driven by factors including low levels of calcium, pro-inflammatory cytokines, and angiotensin II^{53,54}. Hypocalcemia in particular, stimulates the production of calcitriol, the hormonal metabolite of vitamin D, which induces SPP1 by binding to a vitamin D response element⁵³. Given the impact of sunlight on vitamin D, the differences in SPP1 levels observed in both dietary groups, may be linked to seasonal effects. Furthermore, individuals practicing APR, typically have lower calcium intake¹¹, as do vegans, who display consistently lower levels vitamin D⁷. This may underlie the greater magnitude of change in SPP1 levels in the PR group. Currently, SPP1 is in clinical trials, mostly for indications linked to cancer (**Table S1**).

PR-unique DAPs as drug targets. Interactions between drugs and their targets affect drug action and we sought to explore how many of the 264 APR-linked DAPs are targets for known drugs. For phase 1-4 drugs, 62 DAPs (23%) are targets for at least one drug, of which 28 (11%) are targets for at least one phase 4, approved drug (**Fig. 5**). Over half of DAPs are targets for multiple drugs. One example is EGFR, which is targeted by 56 phase 1-4 drugs, of which 20 are approved for the treatment of various cancer types. Another example is MME, targeted by four phase 1-4 drugs, of which two approved drugs are used to treat hypertension and diarrhea respectively, while two others are currently in phase 2 clinical trials for the treatment of hypertension (**Fig. 5, Extended Data Fig. 5, Table S4**). Overall, indications for approved drugs targeting the above DAPs include cancer, immune system and inflammatory, visual system, and cardiovascular diseases (**Fig. 5, Table S4**).

APR exacerbates differences in metabolite and protein levels between dietary groups.

Although less powerful than comparisons of individuals between timepoints, we also examined differences of metabolite and protein levels between dietary groups for each timepoint. At T1, when both groups were on an omnivorous diet, no differences in metabolites levels were detected (**Extended Data Fig. 6, Table 1**). At T2, following restriction for the PR group, we report 102 DAMs between dietary groups. Of these, 97 (95%) were also detected in the PR group from T1 to T2, supporting the idea that these

metabolite changes are directly linked to APR. These findings translate into a similar mortality score between PR and NR groups at T1 (mean score 0.11 in PR vs 0.079 in NR, $p=0.951$ (**Extended Data Fig. 2**), but at T2 we report significantly lower values for PR individuals (mean score -0.91 in PR vs 0.70 in NR, $p=0.007$). These results support the idea that APR is associated with a metabolic profile that is related to a decrease in the risk of all-cause mortality, but also highlight that recorded changes are most likely transient. When comparing the association patterns from T2 with complex diseases, the trends were similar to the association profiles comparing the two timepoints in PR individuals (**Extended Data Fig. 3**).

Similarly, we examined differences in protein levels between dietary groups and report 18 and 60 DAPs at T1 and T2 respectively (**Extended Data Fig. 7**). Of these, 10 were detected at both timepoints likely reflecting long-term differences between dietary groups. ALPP, found in relatively low concentrations in plasma, was the most significant DAP, detected at lower levels in the PR group at both timepoints. Plasma levels of this enzyme are thought to derive from neutrophils, which were found to be consistently lower in the PR group²⁸, along with lower levels of pro-inflammatory cytokine IL15. Unique DAPs at T2 were over six times as many compared to T1 (50 vs 8 DAPs), reflecting acute effects of APR, with FGF21 being the most significant finding. Of the 50 DAPs unique to T2, 31 (62%) were DAPs unique to PR individuals from T1 to T2 supporting the idea of effects linked to APR.

Discussion

In the present study we demonstrate extensive metabolic reprogramming linked to short-term APR in humans. The molecular changes described appear to be the consequence of abstinence from meat, fish, dairy products and eggs, in a dietary pattern resulting in overall lower intake of protein, but not of energy^{10, 11}. Recorded changes appear to be largely transient, but are associated with metabolite profiles linked to positive effects on health. For this reason, we hypothesize that the proteins highlighted through our work may be high-value candidates to evaluate for potential therapeutic effects. Indeed, over half of the 23 proteins with the strongest associations to APR are currently in clinical trials for specific indications including cardiovascular disease, type 2 diabetes and cancer (**Table S1**). Finally, we report that APR is associated with changes in levels of multiple drug targets, and we suggest that these proteins are high-value candidates for pharmacological intervention in human disease.

We demonstrate APR-associated reductions in multiple lipid classes and in BCAAs valine and leucine. BCAAs are strong agonists of mTORC1, which integrates nutrient and hormonal cues to regulate cellular processes linked to growth and proliferation, and ultimately healthspan and longevity^{1, 2}. In addition to BCAAs, decreased levels of methionine also reduce mTORC1 signalling, and lead to increased levels of FGF21¹. Animal products are rich in methionine, and vegetarian and vegan individuals typically display lower plasma levels of this amino acid compared to individuals who regularly consume meat^{8, 37, 55}. In humans, a four-to-six-week course of protein or methionine restriction has been shown to lead to increased plasma levels of FGF21 and to improved metabolic profiles^{23, 33}. Although methionine was not quantified in the present study, it is likely that increased FGF21 levels observed upon APR may be driven in part by reduced intake of methionine.

Despite the multiple beneficial effects of FGF21 on metabolic health, increased levels of this hormone may exert detrimental effects on bone homeostasis³⁶. Increased OXT levels may also have negative effects on health, due to anabolic effects on bone and muscle⁴³. Similarly, increased levels of SPP1, and changes in the levels of FGF23, PTH1R and PTHrP (also APR-associated DAPs with roles in bone development and function, and calcium homeostasis⁵⁶), also likely affect bone health. Taken together these changes may contribute to the poorer bone health documented for individuals following plant-based diets⁷. These observations highlight some of the challenges linked to the development of pharmacotherapies and emphasize the need for a better understanding of the molecular pathways affected by dietary interventions. Our work puts forth 53 proteins (**Table S2**) to explore for their involvement in FGF21 signalling and can help prioritise candidates in the effort to develop FGF21-based pharmacotherapies. Obtaining a better understanding of the biology of FGF21 and OXT in humans is also crucial given their roles in regulation of dietary preference. Impaired signalling through these hormones underlies dietary choices that exacerbate obesity and linked diseases⁴⁵ and elucidating the mechanisms governing feeding regulation will contribute to the development of interventions promoting healthy diet choice. In addition to affecting appetite regulating hormones, APR was also associated with changes in levels of plasma proteins that are drug targets (**Fig. 5, Extended Data Fig. 5, Table S4**). Altering the levels of proteins targeted by drugs may have an impact on the kinetics of drug-target binding⁵⁷ thus affecting the balance between a drug's therapeutic benefit and its toxicity. For

drugs that are in the earlier phases of development, knowledge of dietary effects on drug target concentration may help inform study design, leading to clearer results and better use of resources.

In addition to APR-associated protein level changes, we also report DAPs detected in the NR group between timepoints and suggest that some of these may represent seasonal changes in protein levels that were suppressed by APR in PR individuals. Seasonal effects remain understudied in humans although a range of phenotypes including cardiovascular disease, allergies, autoimmune conditions, and psychiatric disorders display seasonal trends⁵⁸. Understanding the molecular mechanisms linking seasonality to these phenotypes will have important implications for the assessment of population-wide health risk but also for healthcare.

We acknowledge a number of limitations of our study. First, this work is limited by the absence of dietary intake data for study participants. However, given the very specific guidelines outlined by the Greek Orthodox Church, the APR dietary pattern is highly consistent between different groups of practicing individuals. Indeed, for overlapping measurements, our findings are in line with those from two studies that recorded dietary intake and measured multiple traits in APR-practicing individuals during the same restriction period (Lent)^{10, 11}. Secondly, profiling was not performed immediately prior to initiation of APR. However, given that the dietary patterns preceding both T1 and T2 are very similar²⁸, we expect that measurements prior to initiation of APR at T2 would have been very similar to measurements at T1. Thirdly, although we have adjusted for a range of parameters to the best of our ability, given existing differences between PR and NR groups, some residual effects may remain for comparisons between dietary groups. Finally, molecular levels assessed were in plasma samples, thus representing the biology of multiple tissues and not enabling us to ascertain tissue-specific mechanisms.

Our study has documented extensive metabolic reprogramming linked to short-term abstinence from meat, fish, dairy products and eggs, which is likely driven by restriction of protein and more specifically of specific amino acids. Understanding additional factors and pathways driven by APR, such as changes in the gut microbiome, in immune cell type composition and changes in gene transcription will enable better mapping of APR-linked

effects and a more thorough understanding of how this dietary pattern affects health, but also how it can inform the development of pharmaceuticals to mimic dietary interventions with beneficial effects on health. Furthermore, longitudinal studies in APR-practicing individuals will enable us to ascertain long-term effects on health and to evaluate the potential of APR-like targeted dietary interventions and food-as-medicine approaches for the prevention and treatment of disease.

Methods

FastBio population sample. The FastBio study was advertised during Autumn 2017 to the local communities of Thessaloniki, Greece through various means, including the press, radio, social media, and word of mouth. Candidate participants expressed their interest via telephone, email or via the project's website (www.fastbio.gr). Following screening of over 1,000 candidates from the greater area of Thessaloniki through two interviews, 411 apparently healthy unrelated individuals, who met FastBio selection criteria (**Text S1**) were included in the study. Participants belonged to one of two groups, specified by their diet: 200 individuals who followed a temporally structured dietary pattern of animal product restriction (APR) (periodically restricted, PR group) and 211 continuously omnivorous individuals who follow the diet of the general population and were not under any kind of special diet (non-restricted group, NR group).

PR individuals constitute a unique study group given their consistent adherence to a specific dietary pattern that involves alternating between omnivory and abstinence from meat, fish, dairy products and eggs (but not shellfish and molluscs) for 180-200 days annually (for detailed restriction pattern see **Text S2, Fig. 1b**). The PR diet is practiced for religious reasons as specified by the Greek Orthodox Church and is typically part of the culture of the family PR individuals are born into. It is initiated during childhood and is temporally structured with a specific periodicity involving four extended periods of restriction throughout the year, as well as restriction on Wednesdays and Fridays of each week. During periods of restriction, PR individuals also typically consume less alcohol. When not practicing restriction, PR individuals follow an omnivorous type of diet similar to the general population. Only PR individuals who had followed this dietary pattern for at least ten years were included in the FastBio study.

The FastBio population sample is described in ref²⁸, briefly, compared to NR individuals, PR were on average older (PR: 51.5 ± 13.5 , NR: 45.0 ± 13.1), had higher BMI (PR: 28.4 ± 4.6 , NR: 26.2 ± 4.4) and blood pressure (SBP PR: 127 ± 19.0 , NR: 121 ± 19.7 ; DBP PR: 80 ± 10.8 , NR: 78 ± 11.8) and were less likely to smoke (smokers PR: 6.5%, NR: 33.2%). Both groups consisted of slightly more female participants (PR: 54%, NR: 55%). Levels of physical activity were similar between groups and timepoints. The vast majority of participants were apparently healthy (according to self-reports) although a minority had underlying chronic conditions, including diabetes, arterial hypertension and hypothyroidism, for which treatment was being received. Very few participants were taking dietary supplements.

Collection of data, of biological material and measurement of traits. All FastBio participants were invited to two scheduled appointments at the Interbalkan Hospital of Thessaloniki. The first appointment took place in October-November 2017 (Timepoint 1 (T1)) and covered a period during which PR individuals has been on an omnivorous diet for 8-9 weeks (excluding Wednesdays and Fridays). The second appointment (Timepoint 2 (T2)) took place in March 2018 and was during Lent, covering a period where PR individuals had abstained from meat, fish, dairy products and eggs for at least three and a maximum of four weeks. A recall rate of 95% was achieved at T2, with 192 (out of 200) PR participants and 198 (out of 211) NR participants attending both appointments. For both timepoints, all appointments were scheduled between 7:30-9:30 am to minimize circadian effects, and were completed during a two-week window to minimize effects of seasonality for the specific sampling window. All participants gave their written informed consent and the study was approved by the local ethics committee (BSRC Alexander Fleming Bioethics Committee Approval 17/02/2017). For each participant, following overnight fasting, blood was drawn into EDTA-coated tubes and centrifuged to obtain plasma within 10-15 minutes of collection. Plasma was stored at -80°C . Aliquots were taken forward to generate metabolomics and proteomics data as described below.

Metabolomic profiling. For each sample, a volume of 100 μL was used for metabolomics analysis. Blood metabolite profiling of 249 metabolites was obtained using high-throughput NMR spectroscopy (Nightingale Health Plc, biomarker quantification library 2020). The panel is mostly composed of lipids and includes 168 absolute metabolite levels and 81 derived measures (ratios and percentages). Among the 801 samples, two could not be quantified, one due to a lack of material and one due to a technical error. Raw data

corresponding to absolute concentrations or ratios of metabolites for the 799 remaining individuals were used for further analysis.

Proteomic profiling. For each sample, a volume of 40 μ L was used for proteomics analysis. Plasma protein levels were measured on the Olink Explore 1536 platform (Olink Proteomics AB, Uppsala, Sweden) using the Neurology, Oncology, Cardiometabolic and Inflammation 384-plex panels (panel lot number B04414, B04412, B04413, B04411, respectively). Olink Explore is a protein biomarker platform that utilizes Proximity Extension Assay (PEA) technology with next-generation sequencing readout. Data generated from Olink are pre-processed and quality controlled using Olink data analysis software. Protein levels are reported in normalized protein expression values (NPX), which is a relative quantification unit in \log_2 scale with 1 NPX increase corresponding to doubled protein concentration.

Metabolite and protein quality control. All quality control (QC) steps are summarized in **Fig. S1**. QC procedures and statistical analyses were performed in R (version 4.1.3). Three individuals were removed from the analysis because they were first degree relatives with other participants. The success rate of metabolites and of samples were used to filter the data. The success rate was defined as the proportion of samples for which the metabolites had non-missing values. A threshold of 85% was applied for metabolites, resulting in the selection of 248 protein assays, and a threshold of 75% was applied for samples, resulting in the selection of 797 samples. The thresholds were based on the distribution of the QC metrics in the sample. The only metabolite removed was 3-Hydroxybutyrate (success rate 37%). Values below LOD were kept. Metabolite levels were \log_2 -transformed prior to statistical analysis. We used a similar approach for proteins measured by the Olink Assay with the same threshold. This resulted in the selection of 1,464 protein assays and 793 samples. For quality assurance requirements, the panel includes three proteins that are quantified four times each (i.e. some proteins contain multiple IDs), the 1,464 protein assays correspond to 1,455 actual proteins. For simplicity, the term ‘proteins’ will refer to the Olink assays from now on. From the remaining data, all the values which have failed either Olink Assay QC or Olink Sample QC were set as missing while values below limit of detection (LOD) were kept in the downstream analyses. NPX values being already in the \log_2 scale, no further transformation of the data was applied prior to statistical analysis.

Principal Component Analysis (PCA) was used to check for sample outliers. Missing data were imputed by the mean prior to the PCA. The PCA on metabolite levels revealed 14 outliers (**Fig. S2a**) as samples with more than three standard deviations from the mean in the two first components (indicated by the red dashed lines). These samples were excluded from further analyses. On the PCA based on protein levels, a homogeneous group with no extreme outliers was observed (**Fig. S2b**). To maximize sample sizes and statistical power, no individual was removed on the basis of this PCA. The final dataset consisted of 777 and 793 samples for the metabolomics and proteomics statistical analyses respectively.

Statistical analysis. Differential abundance analysis for metabolite and protein levels was performed using the limma package (version 3.50.3)⁵⁹. We used limma to record: A) changes in measured traits for each dietary group between timepoints (positive effects correspond to an increase at T2 compared to T1), and B) differences of measured traits between dietary groups for each timepoint (positive effects correspond to higher levels in PR compared to NR). To take into account the within-individual comparisons in the paired analyses, a linear mixed model was used where dietary groups and timepoints were treated as fixed effects and subject IDs were treated as random effects. All analyses were adjusted on sex, age squared, BMI and medication use (including medication for hypertension, thyroid, diabetes, osteoporosis and antiplatelets). Each medication variable was binary reporting whether individuals were taking this medication or not. It is to note that only a few participants are on medications (ranging from 7 individuals for the antiplatelets medication to 53 for the hypertension medication out of the 411 samples at T1). For the proteomics analysis, the mean value of the protein levels for each sample was included as an additional covariate. Limma was run separately on metabolite and protein levels and p-values were adjusted for multiple testing using the false discovery rate (FDR). Metabolites and proteins with an adjusted p-value lower than 5% were considered as differentially abundant metabolites (DAMs) and proteins (DAPs).

Mortality score. To assess the effect of the metabolites on health, we used a mortality score developed by Deelen et al²⁶ combining levels of 14 selected metabolites from the Nightingale panel (XXL-VLDL-L, S-HDL-L, VLDL size, PUFA by FA ratio, glycine, lactate, histidine, isoleucine, leucine, valine, phenylalanine, acetoacetate, albumin and glycoprotein acetyls). Lower values of the score have been shown to be associated with a decreasing hazard ratio of

overall mortality in a cross-sectional study, making it a surrogate for overall health of individuals. Following \log_2 -transformation and scaling, the metabolic score was calculated for FastBio participants at both timepoints in both dietary groups. The scores were then regressed on the same covariates as in the differential expression analysis (age squared, sex, BMI, hypertension medication, diabetes medication, osteoporosis medication, cholesterol medication and antiplatelets medication) and compared between the groups using linear models.

Comparisons of DAMs to UKBB metabolite associations with complex diseases. To investigate the potential impact of metabolite changes linked to APR on metabolic health, we compared the pattern of metabolite associations observed in FastBio to the ones described by Julkunen et al²⁷ with multiple complex traits from the UK Biobank cohort (summary statistics downloaded from <https://biomarker-atlas.nightingale.cloud/>). We focused on ICD10 codes starting with ‘I-’ and ‘E-’, which correspond respectively to “diseases of the circulatory system” and to “endocrine, nutritional and metabolic diseases”, totalling 62 diseases. The t-statistics were computed from the estimates and standard errors, available in the downloaded file. We then performed PCA using the `prcomp` function in R on the computed t-statistics, also including the FastBio comparisons with the PR group (T2 vs T1) and at T2 (PR vs NR). We did not include the t-statistics of the comparisons within the NR group (T2 v T2) and at T1 (PR vs NR) as we detected only one and zero significant metabolites respectively. Additionally, we represented metabolite associations with each of the complex traits and in FastBio comparisons using a heatmap. For each metabolite class, we selected the most significant metabolite (as depicted in **Fig. 2**).

Identifying proteins linked to FGF21 signalling - FGF21 sensitivity analysis. We investigated potential effects of FGF21 on detected DAPs between timepoints as a sensitivity analysis. For this, we repeated the differential protein expression analysis as described above, but restricted to proteins designated as differentially abundant (409 DAPs, excluding FGF21 in the PR group; 210 DAPs in the NR group) in the primary analysis, and adjusted additionally for FGF21 levels. If a previously identified DAP was no longer significant ($FDR > 0.05$) after adjusting for FGF21 levels, we hypothesized that the two signals were not independent. We also conducted this sensitivity analysis between dietary groups (18 DAPs tested at T1; 59 DAPs tested at T2 after excluding FGF21). STRING DB (v 12.0) was

queried to visualize interactions between FGF21 with proteins that did not retain their significance.

Protein level heterogeneity analysis. To uncover proteins displaying the greatest magnitude of APR-associated change, we performed a heterogeneity analysis on the betas obtained from the limma association models. For this purpose, the Cochran's statistics was used as follows:

$$Q_{stat_{T_2vsT_1}} = \frac{\log FC_{PR} * w_{PR} + \log FC_{NR} * w_{NR}}{w_{PR} + w_{NR}}$$

Where $\log FC_{PR}$ corresponds to the log-fold change of the differential analysis between timepoints in the PR group (and in the NR group respectively), and w_{PR} corresponds to the weight given to the analysis in the PR group which depends on the standard error se_{PR} as:

$$w_{PR} = \frac{1}{se_{PR}^2}$$

w_{NR} is defined similarly for the NR group.

This statistic follows a chi-square distribution with one degree of freedom. To assess the statistical significance of the test, we used a Bonferroni-corrected significance threshold. We computed the effective number of proteins based on their correlation pattern using the procedure described by Li and Ji⁶⁰, giving a total of 1,432 independent tests. We then divided the classical 5% threshold by this value, resulting in a significance threshold of 3.5e-5.

DAPs as drug targets. We queried Open Targets⁶¹ (March 8th 2024) to investigate whether PR-unique DAPs are drug targets. For each DAP that was a target for phase 1-4 drugs, we retrieved information on phase and status of the clinical trial/study, on the approval status of associated drugs, and on indications for these drugs. Clinical trials with “Terminated”, “Withdrawn” or “Unknown” status were excluded. We retained phase 4, approved drugs that were not withdrawn to explore the diseases covered by drugs targeting PR-unique DAPs. Indications treated by these drugs were grouped into broader Experimental Factor Ontology (EFO) disease categories. Diseases categorized under the EFO terms ‘other disease’ or ‘other trait’ were further grouped, where possible, using the ancestral diseases as retrieved from Ontology Lookup Service (OLS) using the ‘rols’ R package⁶².

DAPs in clinical trials. We queried <https://clinicaltrials.gov/> (Oct 30th 2023) for the top 23 most heterogenous DAPs (FDR-corrected results from the heterogeneity analysis) inputting

the protein name in the intervention/treatment field and reporting all clinical trials on record (phases 1-4).

Data availability

Proteomics and metabolomics data have been deposited in ref⁶³.

References

1. Green, C.L., Lamming, D.W. & Fontana, L. Molecular mechanisms of dietary restriction promoting health and longevity. *Nat Rev Mol Cell Biol* **23**, 56-73 (2022).
2. Lee, M.B., Hill, C.M., Bitto, A. & Kaeberlein, M. Antiaging diets: Separating fact from fiction. *Science* **374**, 953-961 (2021).
3. Longo, V.D. & Anderson, R.M. Nutrition, longevity and disease: From molecular mechanisms to interventions. *Cell* **185**, 1455-1470 (2022).
4. Dorling, J.L. *et al.* Effects of caloric restriction on human physiological, psychological, and behavioral outcomes: highlights from CALERIE phase 2. *Nutr Rev* **79**, 98-113 (2021).
5. Spadaro, O. *et al.* Caloric restriction in humans reveals immunometabolic regulators of health span. *Science* **375**, 671-677 (2022).
6. Pietzner, M. *et al.* Systemic proteome adaptations to 7-day complete caloric restriction in humans. *Nat Metab* (2024).
7. Key, T.J., Papier, K. & Tong, T.Y.N. Plant-based diets and long-term health: findings from the EPIC-Oxford study. *P Nutr Soc* **81**, 190-198 (2022).
8. Tong T.Y.N, S.-B.K., Papier K., Atkins J.R., Parsaeian M., Key T.J., Travis R.C. The plasma proteome of plant-based diets: analyses of 1463 proteins in 50,000 people. Preprint at <https://www.medrxiv.org/content/10.1101/2023.08.14.23294084v1.full> (2023).
9. Link, V.M. *et al.* Differential peripheral immune signatures elicited by vegan versus ketogenic diets in humans. *Nat Med* (2024).
10. Georgakouli, K. *et al.* The Effects of Greek Orthodox Christian Fasting during Holy Week on Body Composition and Cardiometabolic Parameters in Overweight Adults. *Diseases-Basel* **10** (2022).
11. Sarri, K.O., Linardakis, M.K., Bervanaki, F.N., Tzanakis, N.E. & Kafatos, A.G. Greek Orthodox fasting rituals: a hidden characteristic of the Mediterranean diet of Crete. *Brit J Nutr* **92**, 277-284 (2004).

12. Sniderman, A.D. *et al.* Apolipoprotein B Particles and Cardiovascular Disease A Narrative Review. *Jama Cardiol* **4**, 1287-1295 (2019).
13. Cochran, B.J., Ong, K.L., Manandhar, B. & Rye, K.A. APOA1: a Protein with Multiple Therapeutic Functions. *Curr Atheroscler Rep* **23** (2021).
14. Cooney, M.T. *et al.* HDL cholesterol protects against cardiovascular disease in both genders, at all ages and at all levels of risk. *Atherosclerosis* **206**, 611-616 (2009).
15. Landry, M.J. *et al.* Cardiometabolic Effects of Omnivorous vs Vegan Diets in Identical Twins: A Randomized Clinical Trial. *Jama Netw Open* **6**, e2344457 (2023).
16. Trautman, M.E., Richardson, N.E. & Lamming, D.W. Protein restriction and branched-chain amino acid restriction promote geroprotective shifts in metabolism. *Aging Cell* **21**, e13626 (2022).
17. Felig, P., Marliss, E. & Cahill, G.F. Plasma Amino Acid Levels and Insulin Secretion in Obesity. *New Engl J Med* **281**, 811-816 (1969).
18. McGarrah, R.W. & White, P.J. Branched-chain amino acids in cardiovascular disease. *Nat Rev Cardiol* **20**, 77-89 (2023).
19. White, P.J. *et al.* Insulin action, type 2 diabetes, and branched-chain amino acids: A two-way street. *Mol Metab* **52** (2021).
20. Ramzan, I. *et al.* A Novel Dietary Intervention Reduces Circulatory Branched-Chain Amino Acids by 50%: A Pilot Study of Relevance for Obesity and Diabetes. *Nutrients* **13** (2021).
21. Karusheva, Y. *et al.* Short-term dietary reduction of branched-chain amino acids reduces meal-induced insulin secretion and modifies microbiome composition in type 2 diabetes: a randomized controlled crossover trial. *Am J Clin Nutr* **110**, 1098-1107 (2019).
22. Fontana, L. *et al.* Effects of 2-year calorie restriction on circulating levels of IGF-1, IGF-binding proteins and cortisol in nonobese men and women: a randomized clinical trial. *Aging Cell* **15**, 22-27 (2016).
23. Fontana, L. *et al.* Decreased Consumption of Branched-Chain Amino Acids Improves Metabolic Health. *Cell Rep* **16**, 520-530 (2016).
24. Maida, A. *et al.* A liver stress-endocrine nexus promotes metabolic integrity during dietary protein dilution. *J Clin Invest* **126**, 3263-3278 (2016).
25. Schmidt, J.A. *et al.* NMR Metabolite Profiles in Male Meat-Eaters, Fish-Eaters, Vegetarians and Vegans, and Comparison with MS Metabolite Profiles. *Metabolites* **11** (2021).
26. Deelen, J. *et al.* A metabolic profile of all-cause mortality risk identified in an observational study of 44,168 individuals. *Nat Commun* **10** (2019).

27. Julkunen, H. *et al.* Atlas of plasma NMR biomarkers for health and disease in 118,461 individuals from the UK Biobank. *Nat Commun* **14**, 604 (2023).
28. Loizidou E. M., S.A., Barbounakis P., Glentis S., Dimopoulos A., Anezaki M., Rouskas P., Kontoyiannis I., Demiris N., Scarmeas N., Yannakoulia M., Rouskas K., Dimas A.S. Effects of short-term restriction of animal products on blood biomarkers and cardiovascular disease risk. Preprint at <https://www.medrxiv.org/content/10.1101/2023.05.17.23290094v5> (2024).
29. Wyse, C., O'Malley, G., Coogan, A.N., McConkey, S. & Smith, D.J. Seasonal and daytime variation in multiple immune parameters in humans: Evidence from 329,261 participants of the UK Biobank cohort. *Iscience* **24** (2021).
30. Kaasik, K. *et al.* Glucose Sensor-GlcNAcylation Coordinates with Phosphorylation to Regulate Circadian Clock. *Cell Metab* **17**, 291-302 (2013).
31. Persson, L. *et al.* Circulating Proprotein Convertase Subtilisin Kexin Type 9 Has a Diurnal Rhythm Synchronous With Cholesterol Synthesis and Is Reduced by Fasting in Humans. *Arterioscl Throm Vas* **30**, 2666-U2612 (2010).
32. Flippo, K.H. & Potthoff, M.J. Metabolic Messengers: FGF21. *Nat Metab* **3**, 309-317 (2021).
33. Laeger, T. *et al.* FGF21 is an endocrine signal of protein restriction. *Journal of Clinical Investigation* **124**, 3913-3922 (2014).
34. Hill, C.M. *et al.* FGF21 Signals Protein Status to the Brain and Adaptively Regulates Food Choice and Metabolism. *Cell Rep* **27**, 2934-2947 (2019).
35. Kharitonenkoy, A. *et al.* FGF-21 as a novel metabolic regulator. *Journal of Clinical Investigation* **115**, 1627-1635 (2005).
36. Geng, L.L., Lam, K.S.L. & Xu, A.M. The therapeutic potential of FGF21 in metabolic diseases: from bench to clinic. *Nat Rev Endocrinol* **16**, 654-667 (2020).
37. Castaño-Martinez, T. *et al.* Methionine restriction prevents onset of type 2 diabetes in NZO mice. *Faseb J* **33**, 7092-7102 (2019).
38. Pure, E. & Blomberg, R. Pro-tumorigenic roles of fibroblast activation protein in cancer: back to the basics. *Oncogene* **37**, 4343-4357 (2018).
39. Ducker, G.S. & Rabinowitz, J.D. One-Carbon Metabolism in Health and Disease. *Cell Metab* **25**, 27-42 (2017).
40. Antony, A.C. *et al.* Translational upregulation of folate receptors is mediated by homocysteine via RNA-heterogeneous nuclear ribonucleoprotein E1 interactions. *Journal of Clinical Investigation* **113**, 285-301 (2004).

41. Zito, E. *et al.* Sulphatase activities are regulated by the interaction of sulphatase-modifying factor 1 with SUMF2. *Embo Rep* **6**, 655-660 (2005).
42. Png, G. *et al.* Identifying causal serum protein-cardiometabolic trait relationships using whole genome sequencing. *Hum Mol Genet* **32**, 1266-1275 (2023).
43. McCormack, S.E., Blevins, J.E. & Lawson, E.A. Metabolic Effects of Oxytocin. *Endocr Rev* **41**, 121-145 (2020).
44. McCormack, S.E. *et al.* A Pilot Randomized Clinical Trial of Intranasal Oxytocin to Promote Weight Loss in Individuals With Hypothalamic Obesity. *J Endocr Soc* **7**, bvad037 (2023).
45. Matsui, S. *et al.* Neuronal SIRT1 regulates macronutrient-based diet selection through FGF21 and oxytocin signalling in mice. *Nat Commun* **9** (2018).
46. Jensen-Cody, S.O. *et al.* FGF21 Signals to Glutamatergic Neurons in the Ventromedial Hypothalamus to Suppress Carbohydrate Intake. *Cell Metab* **32**, 273-286 e276 (2020).
47. Liu, S. *et al.* A Comprehensive Analysis of HAVCR1 as a Prognostic and Diagnostic Marker for Pan-Cancer. *Front Genet* **13** (2022).
48. Zhao, X.Y. *et al.* Kidney Injury Molecule-1 Is Upregulated in Renal Lipotoxicity and Mediates Palmitate-Induced Tubular Cell Injury and Inflammatory Response. *Int J Mol Sci* **20** (2019).
49. Murakami, M., Sato, H. & Taketomi, Y. Modulation of immunity by the secreted phospholipase A family. *Immunol Rev* **317**, 42-70 (2023).
50. Treaster, S. *et al.* Convergent genomics of longevity in rockfishes highlights the genetics of human life span variation. *Sci Adv* **9** (2023).
51. Kanaoka, Y. *et al.* Cloning and crystal structure of hematopoietic prostaglandin D synthase. *Cell* **90**, 1085-1095 (1997).
52. Jandl, K. *et al.* Activated prostaglandin D2 receptors on macrophages enhance neutrophil recruitment into the lung. *J Allergy Clin Immun* **137**, 833-843 (2016).
53. Haussler, M.R. *et al.* Molecular Mechanisms of Vitamin D Action. *Calcified Tissue Int* **92**, 77-98 (2013).
54. Zhao, H.L. *et al.* The role of osteopontin in the progression of solid organ tumour. *Cell Death Dis* **9** (2018).
55. Schmidt, J.A. *et al.* Plasma concentrations and intakes of amino acids in male meat-eaters, fish-eaters, vegetarians and vegans: a cross-sectional analysis in the EPIC-Oxford cohort. *Eur J Clin Nutr* **70**, 306-312 (2016).

56. Portales-Castillo, I. & Simic, P. PTH, FGF-23, Klotho and Vitamin D as regulators of calcium and phosphorus: Genetics, epigenetics and beyond. *Front Endocrinol* **13** (2022).
57. AP, I.J. & Guo, D. Drug-Target Association Kinetics in Drug Discovery. *Trends Biochem Sci* **44**, 861-871 (2019).
58. Sailani, M.R. *et al.* Deep longitudinal multiomics profiling reveals two biological seasonal patterns in California. *Nat Commun* **11**, 4933 (2020).
59. Ritchie, M.E. *et al.* limma powers differential expression analyses for RNA-sequencing and microarray studies. *Nucleic Acids Res* **43**, e47 (2015).
60. Li, J. & Ji, L. Adjusting multiple testing in multilocus analyses using the eigenvalues of a correlation matrix. *Heredity (Edinb)* **95**, 221-227 (2005).
61. Ochoa, D. *et al.* The next-generation Open Targets Platform: reimaged, redesigned, rebuilt. *Nucleic Acids Res* **51**, D1353-D1359 (2023).
62. Gallo, L. rols: An R interface to the Ontology Lookup Service. (2024).
63. Metabolic reprogramming induced by periodic dietary restriction of animal products has beneficial effects on human health. Zenodo <https://zenodo.org/records/10985423> (2024).

Acknowledgements

The authors are grateful to the FastBio study participants and to the InterBalkan Hospital Staff. We would also like to thank Dr Dimitrios Rouskas, Dr Pavlos Rouskas and Dr Loukas Kipouros for their invaluable help with sample collection. We acknowledge the technical support of Core Facility Metabolomics and Proteomics at Helmholtz Munich and thank Dr Stefanie Hauck and Dr Agnese Petrera for help with proteomics assays. We would also like to thank Professor Iannis Talianidis for his very helpful comments and input throughout the course of this project.

Funding

This work was funded by an ERC grant to Dr Antigone Dimas (FastBio – 716998). Dr Ozvan Bocher has received funding from the European Union’s Horizon 2020 research and innovation programme under Grant Agreement No 101017802 (OPTOMICS).

Author contributions

Conceptualization: KR, OB and ASD. Methodology: KR, OB, PM, A. Skoulakis and ASD. Formal analysis: OB, PM, A. Skoulakis, A. Simistiras, CE and YCP. Investigation: KR, AD, SG and ASD. Data curation/software: OB, PM, A. Skoulakis, A. Simistiras, CE and YCP. Visualization: OB, PM, A. Skoulakis, A. Simistiras and CE. Supervision: EZ and ASD. Writing-Original draft: OB and ASD. Writing-review and editing: KR, OB, PM, A. Skoulakis, A. Simistiras, CE, YCP, AD, SG, GK, EZ and ASD. Project administration: ASD. Funding acquisition: ASD.

Ethics declarations

The authors declare no competing interests.

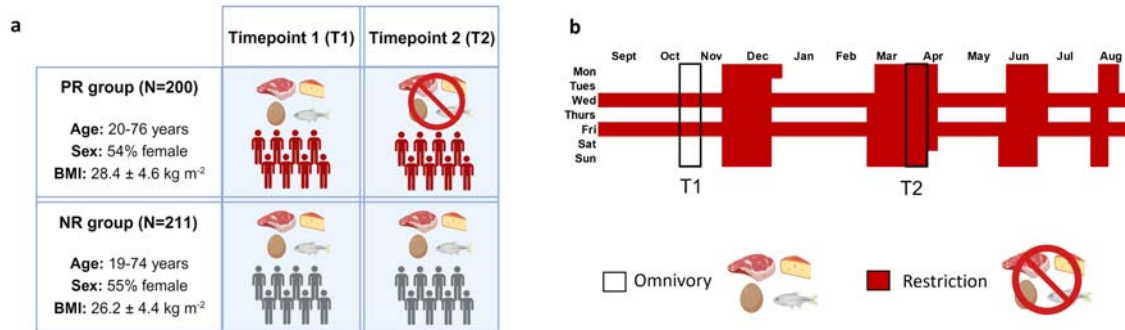


Fig. 1. Study design and periods of animal product restriction (APR). **a**, Schematic of study design. Periodically restricted (PR) individuals alternate between omnivory and APR for religious reasons. These two dietary states were profiled at timepoint 1 (T1) and timepoint 2 (T2) respectively. Non-restricted (NR) individuals are continuously omnivorous and were also profiled at T1 and T2. Created with BioRender.com. **b**, PR individuals practice APR for 180-200 days annually. Restriction is practiced during four extended periods throughout the year and on Wednesdays and Fridays of each week.

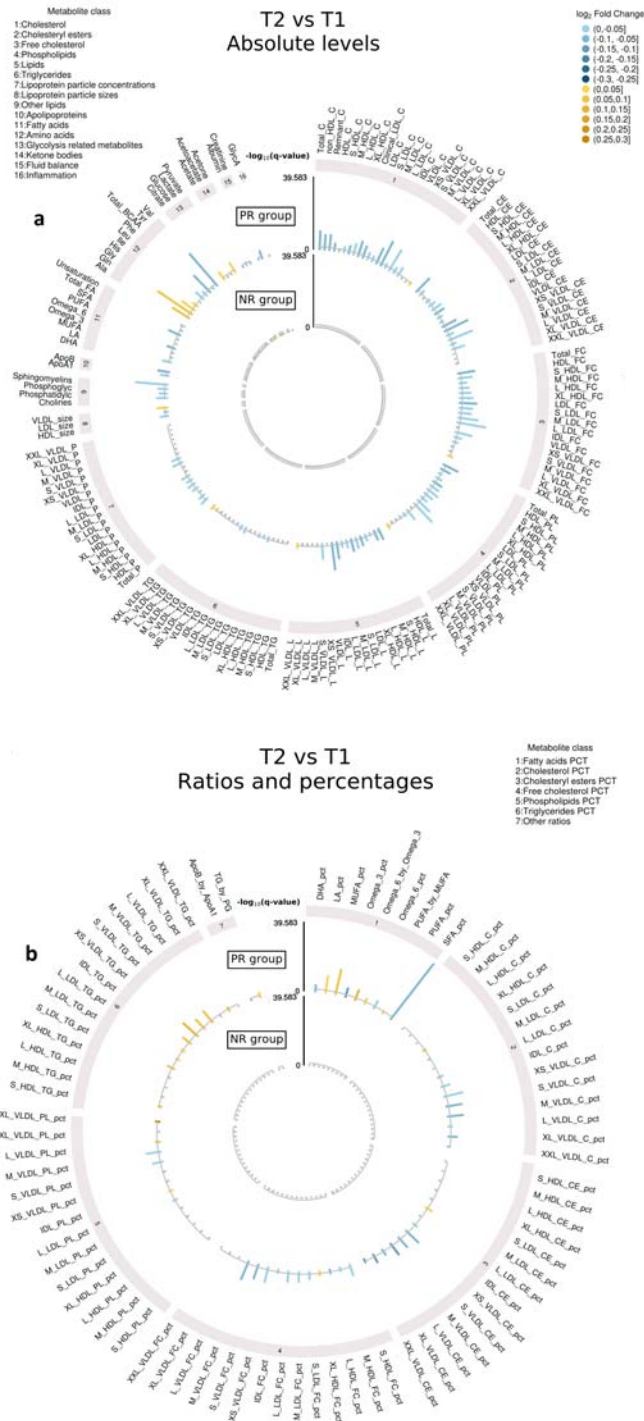


Fig. 2. Differentially abundant metabolites (DAMs) detected from T1 to T2 for each dietary group. Changes in metabolite profiles are shown in the outer circle for PR individuals and in the inner circle for NR individuals (absolute values in panel **a**, ratios and percentages in panel **b**). The $-\log_{10}$ of the FDR-adjusted p-value (q-value) is represented in the y-axis. Yellow bars represent an increase in metabolite levels from T1 to T2 whereas blue bars represent a decrease. Metabolites shown in grey are not significant.

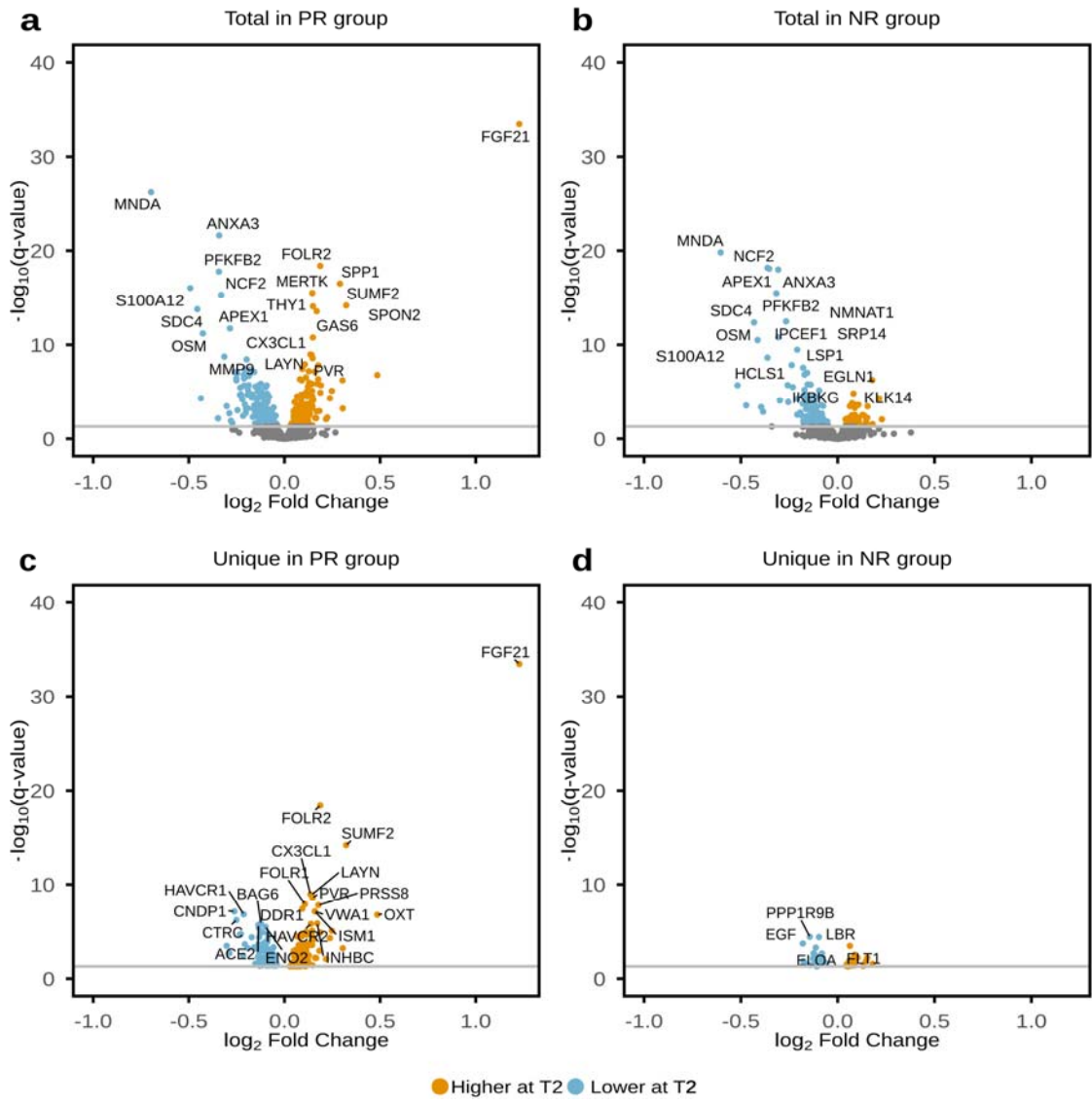


Fig. 3. Differentially abundant proteins (DAPs) detected from T1 to T2 for each dietary group. Total DAPs detected in the PR group (a) and in the NR group (b). Unique DAPs detected in the PR group (c) and in the NR group (d). Proteins with increased levels at T2 are shown in yellow whereas proteins with decreased levels are shown in blue. Proteins shown in grey are not significant.

Proteins with the greatest magnitude of change linked to APR

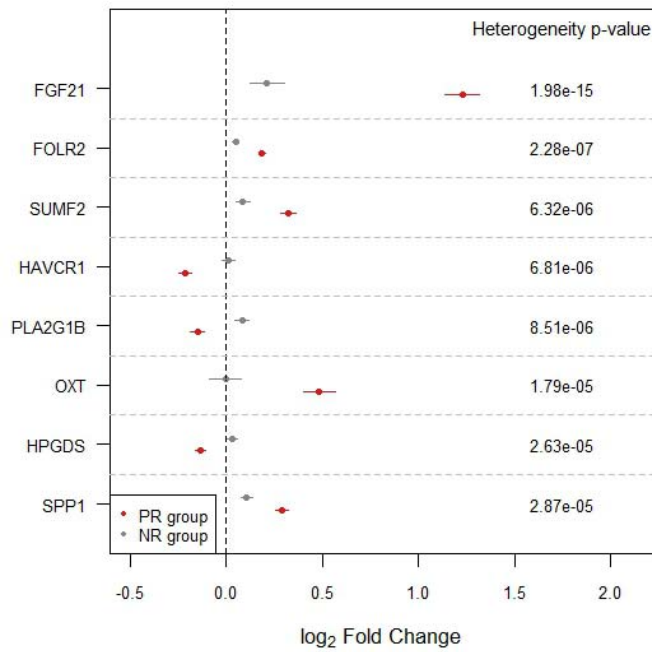


Fig. 4. Proteins with the greatest magnitude of change linked to APR. Eight proteins showing the greatest effect size changes from T1 to T2 and between dietary groups were identified through heterogeneity analysis using the Cochran's statistics (associated p-value indicated in 'Heterogeneity p-value'). Associations between levels of each protein and timepoints are shown in red for the PR group and in grey for the NR group.

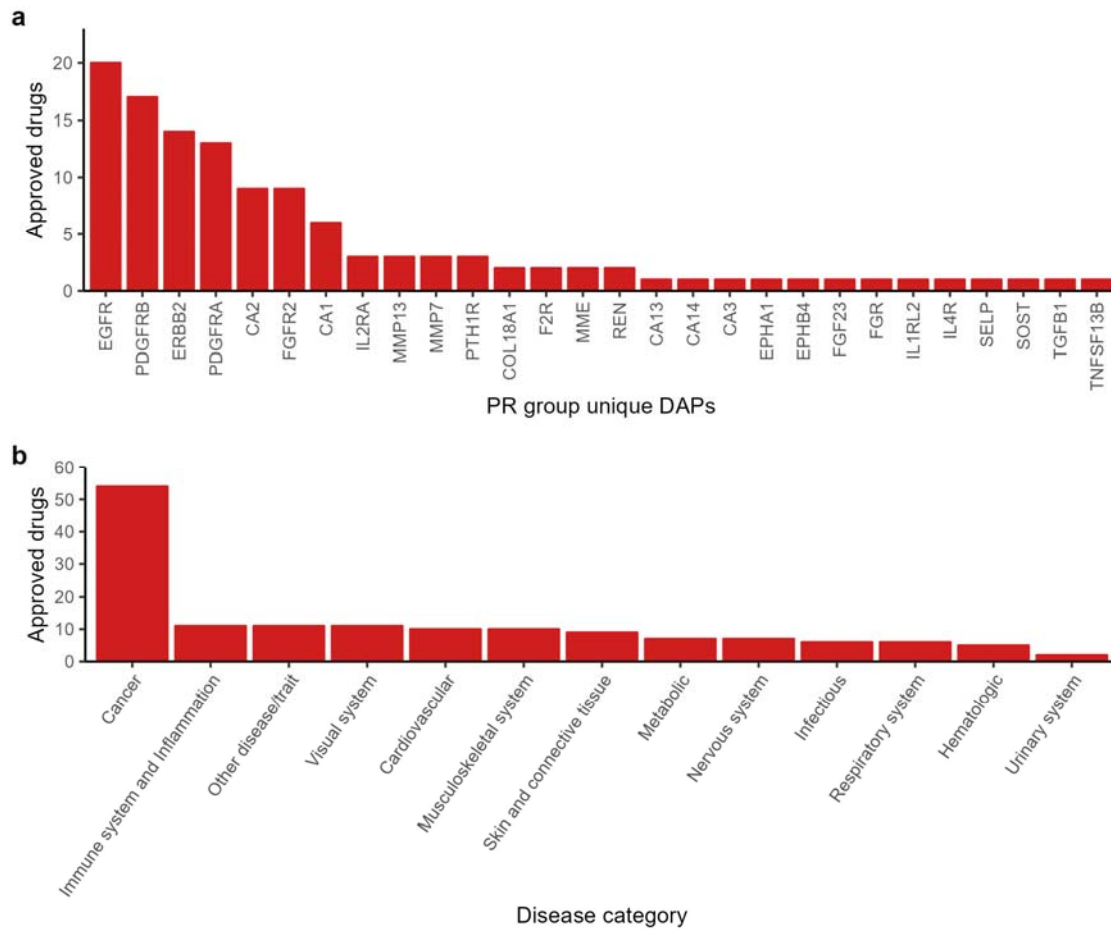


Fig. 5. PR-unique DAPs as targets of approved drugs and associated disease indications. **a**, Number of approved drugs (excluding withdrawn drugs) that target DAPs detected only in the PR group. **b**, Number of approved drugs (from above) per disease indication.

Table 1. Overview of differentially abundant metabolites (DAMs) and differentially abundant proteins (DAPs) between timepoints and dietary groups.

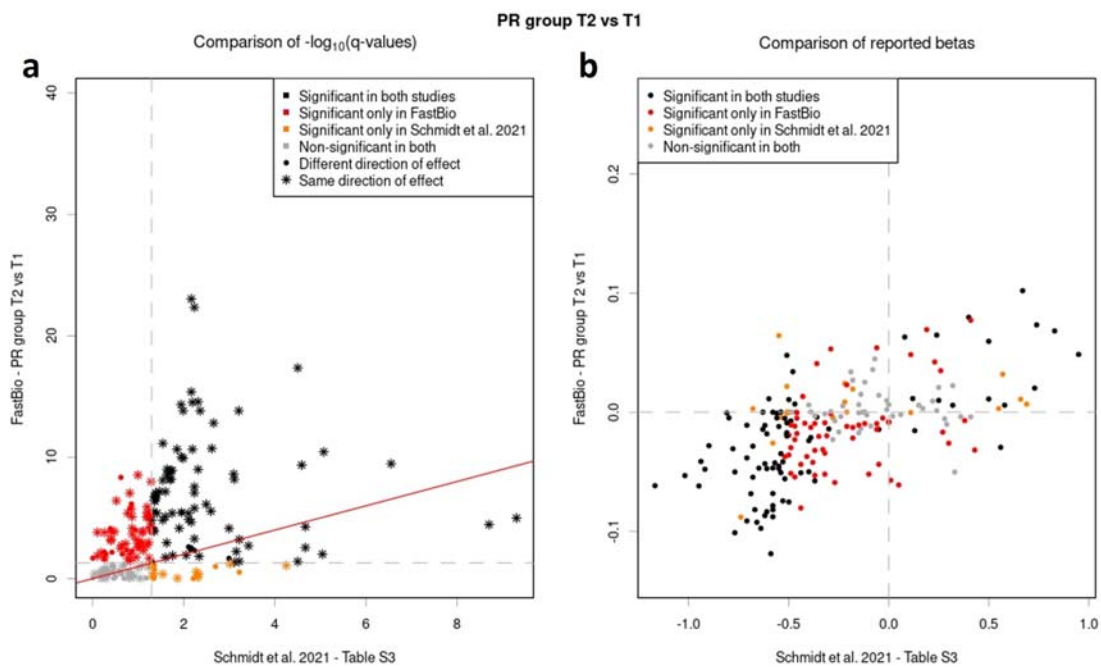
Comparison		Number of DAMs/DAPs			Most significant DAM/DAP		
		Unique	Shared	Total	Trait/Molecule	LogFC	q-value
PR T2 vs T1	DAMs	167	1	168	SFA_pct	-0.06	2.61E-40
	DAPs	264	146	410	FGF21	1.23	3.42E-34
NR T2 vs T1	DAMs	0	1	1	Pyruvate	0.01	0.04
	DAPs	55	146	201	MNDA	-0.60	1.54E-20
T1 PR vs NR	DAMs	0	0	0	-	-	-
	DAPs	8	10	18	ALPP	-0.79	3.74E-06
T2 PR vs NR	DAMs	102	0	102	SFA_pct	-0.05	6.50E-10
	DAPs	50	10	60	FGF21	1.11	7.53E-11

Table 2. Overview of eight proteins displaying the greatest magnitude of change linked to APR.

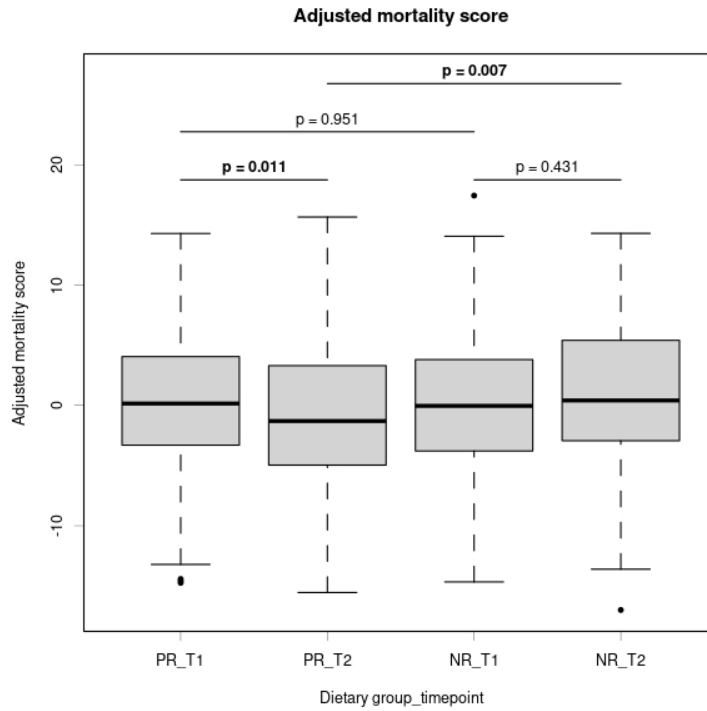
Protein	Direction of change	Correlations with metabolites		Clinical trials	
		Absolute levels	Ratios and percentages	No.	Indicative conditions
FGF21	↑	<u>VLDL</u> : S to XXL, <u>LDL</u> : S to M, <u>HDL</u> : L to XL, fatty acids, TG, Ala, Gln, Val, lactate, pyruvate, acetoacetate	<u>VLDL</u> : XS to XL, <u>LDL</u> : S to L, <u>HDL</u> : S to XL, fatty acids pct, TG by PG, ApoB by ApoA1	39	gestational and type 2 diabetes, insulin resistance, obesity, liver health
FOLR2	↑	<u>HDL</u> : S to M, sphingomyelins, ApoA1, PL, P		0	
SUMF2	↑	<u>VLDL</u> : L to XXL, <u>HDL</u> : M to XL, TG, ApoA1, fatty acids, Gly	<u>VLDL</u> : M and XL (C, CE, TG), <u>LDL</u> : S to L (FC, CE), <u>HDL</u> : M and XL (C, FC, TG, PL), fatty acids pct, ApoB by ApoA1, TG by PG	0	
HAVCR1	↓	<u>VLDL</u> : XS to L, <u>IDL</u> , <u>LDL</u> : S to L, <u>HDL</u> : S, fatty acids, C, TG, PL, CE, FC, L, P, Val, ApoB, phosphoglyc, cholines, phosphatidylc, sphingomyelins	<u>LDL</u> : L (PL), <u>HDL</u> : S (FC)	24	renal function
PLA2G1B	↓	Ala, lactate, creatinine		54	atherosclerosis, coronary disease, renal function, type 2 diabetes
OXT	↑	<u>HDL</u> : L to XL, Ala, Ile, pyruvate, unsaturation	<u>VLDL</u> : XS to XL, <u>HDL</u> : XL, MUFA, PUFA by MUFA, TG by PG	773	pregnancy, labour, infertility, bleeding, obesity, neurological disorders, substance dependence, pain, social cognition
HPGDS	↓			1	pulmonary health
SPP1	↑	Gln, Val		25	cancer, infant growth and development

Direction of change refers to the change in protein abundance from timepoint 1 to timepoint 2 for the PR group. Abbreviations: VLDL: very-low-density lipoprotein, LDL: low-density lipoprotein, HDL: high-density lipoprotein, IDL: intermediate-density lipoprotein, XS to XXL: particle sizes (extra-small to double extra-large), TG: triglycerides, PL: phospholipids, P: lipoprotein particle concentrations, C: cholesterol, CE: cholesteryl esters, FC: free cholesterol, L: lipids, PG: phosphoglycerides, Ala: Alanine, Gln: glutamine, Val: valine, Gly: glycine, Ile: isoleucine, ApoA1: apolipoprotein A1, ApoB: apolipoprotein B, phosphoglyc: phosphoglycerides, phosphatidylc: phosphatidylcholines, unsaturation: degree of unsaturation, MUFA: monounsaturated fatty acids, PUFA: polyunsaturated fatty acids, pct: percentage.

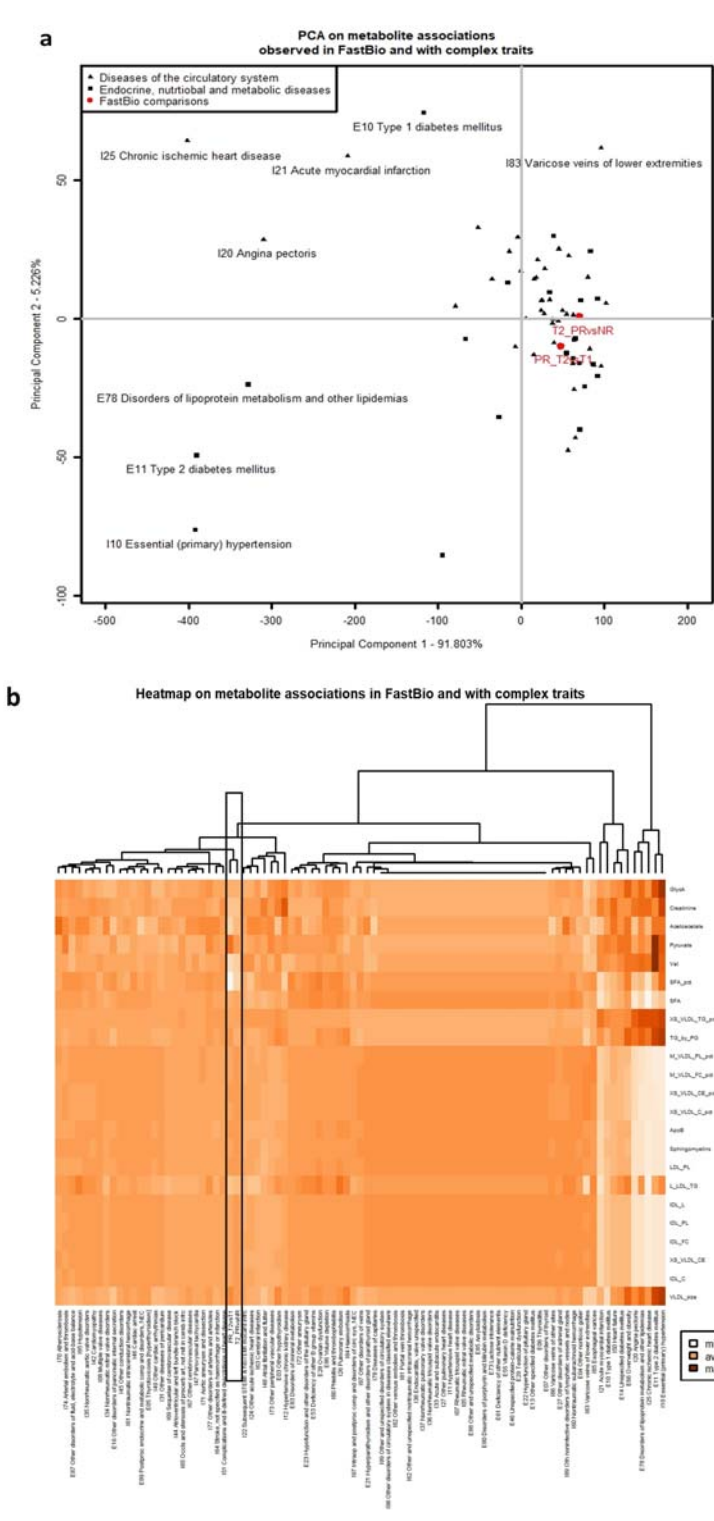
Extended data



Extended Data Fig. 1. Comparison of DAMs detected from T1 to T2 in the PR group, to metabolites with significantly different levels detected between vegan and meat-eating individuals. Associations between metabolite profiles and timepoints in the PR group are compared to associations from ref.²⁵, both in terms of p-values (panel **a**) and effect sizes (panel **b**). Metabolites are coloured according to their significance in the two studies. Star-shaped points in panel **a** represent a concordant direction of effect.



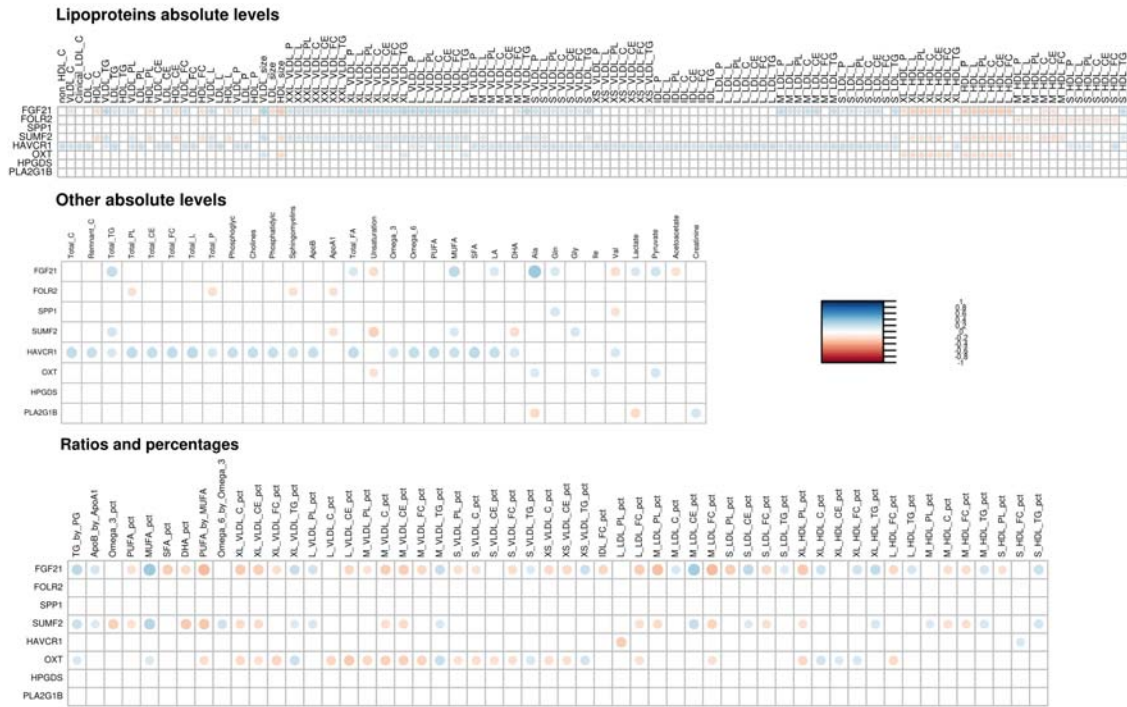
Extended Data Fig. 2. All-cause mortality score for each dietary group at each timepoint. The distributions of the 14-metabolite mortality score developed in ref.²⁶ are represented as boxplots and significant association p-values from a regression model of the scores against timepoints and dietary groups are shown in bold.



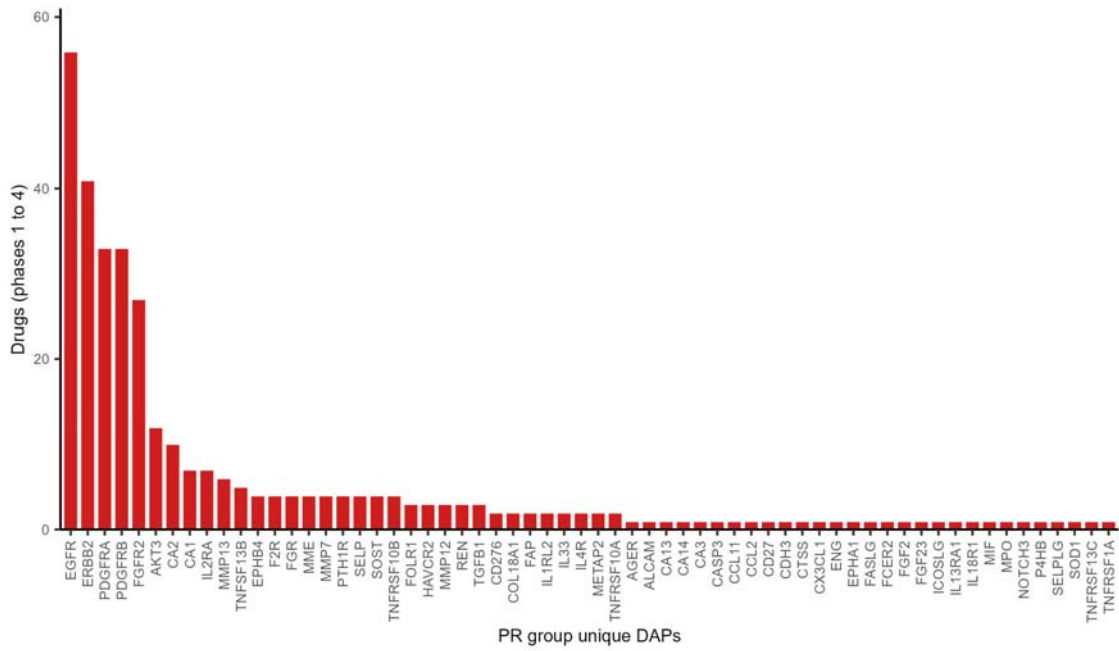
Extended Data Fig. 3. Principal component analysis (PCA) and heatmap of metabolite associations with complex diseases and in FastBio comparisons. **a**, PCA constructed on the metabolite associations (t-statistics) described in the PR group (T2 vs T1) and at T2 (PR vs NR), and reported with “diseases of the circulatory system” and “endocrine, nutritional and metabolic diseases” in the UK Biobank (ref.²⁷). **b**, Heatmap of the same associations where the most significant metabolite for each metabolite class has been selected based on the T2 vs T1 comparison in the PR group. PR and T2 comparisons are highlighted in this heatmap. In the PCA, the two first principal components are represented, and labels are reported for PR and T2 comparisons and for the diseases showing the most distinguishable pattern of associations. The PCA is mainly constructed on associations with complex diseases and driven by those showing the strongest associations with metabolites. From the heatmap, this corresponds to type 2 diabetes, chronic ischemic heart disease, essential hypertension, angina pectoris and disorders of lipoprotein metabolism which are strongly associated with lipoproteins. Other diseases, as well as PR and T2 associations, are close on the PCA as they show much lower magnitudes of associations with these metabolites. We can therefore

interpret comparisons within the PR group and at T2 with diseases the furthest away, for which APR seems to be protective. In the dendrogram, the PR and T1 comparisons are grouped together in a single cluster distinct from the other diseases, highlighting an overall specific pattern of associations different from the selected complex diseases.

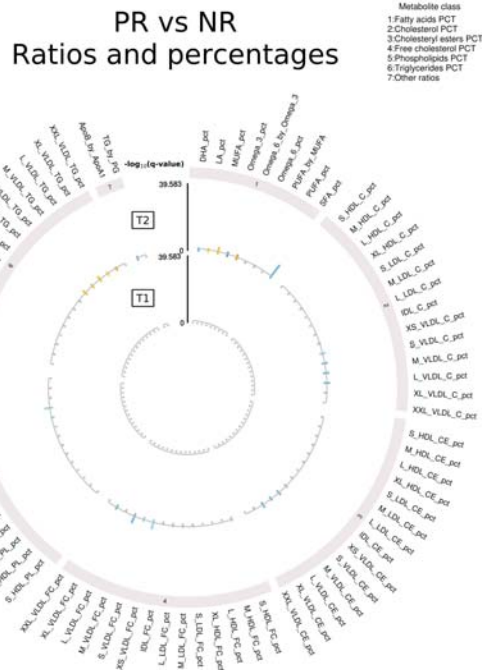
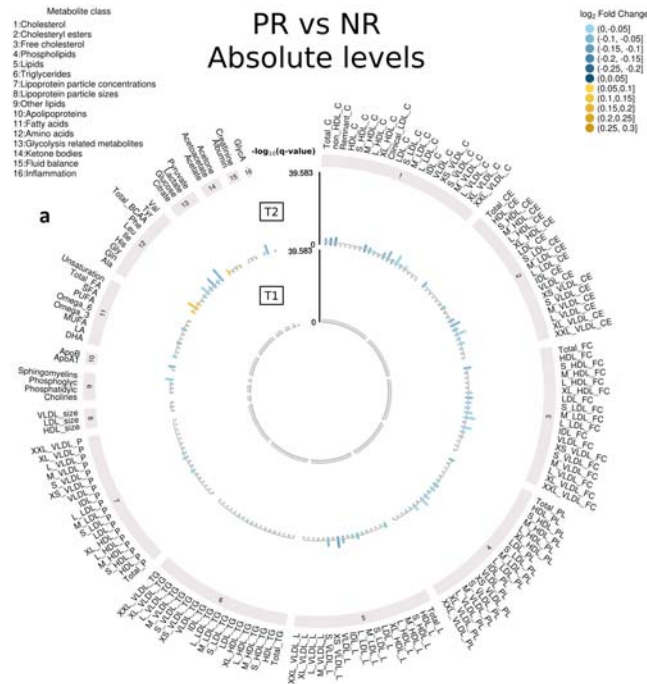
Correlations between metabolites and the 8 most heterogeneous DAPs



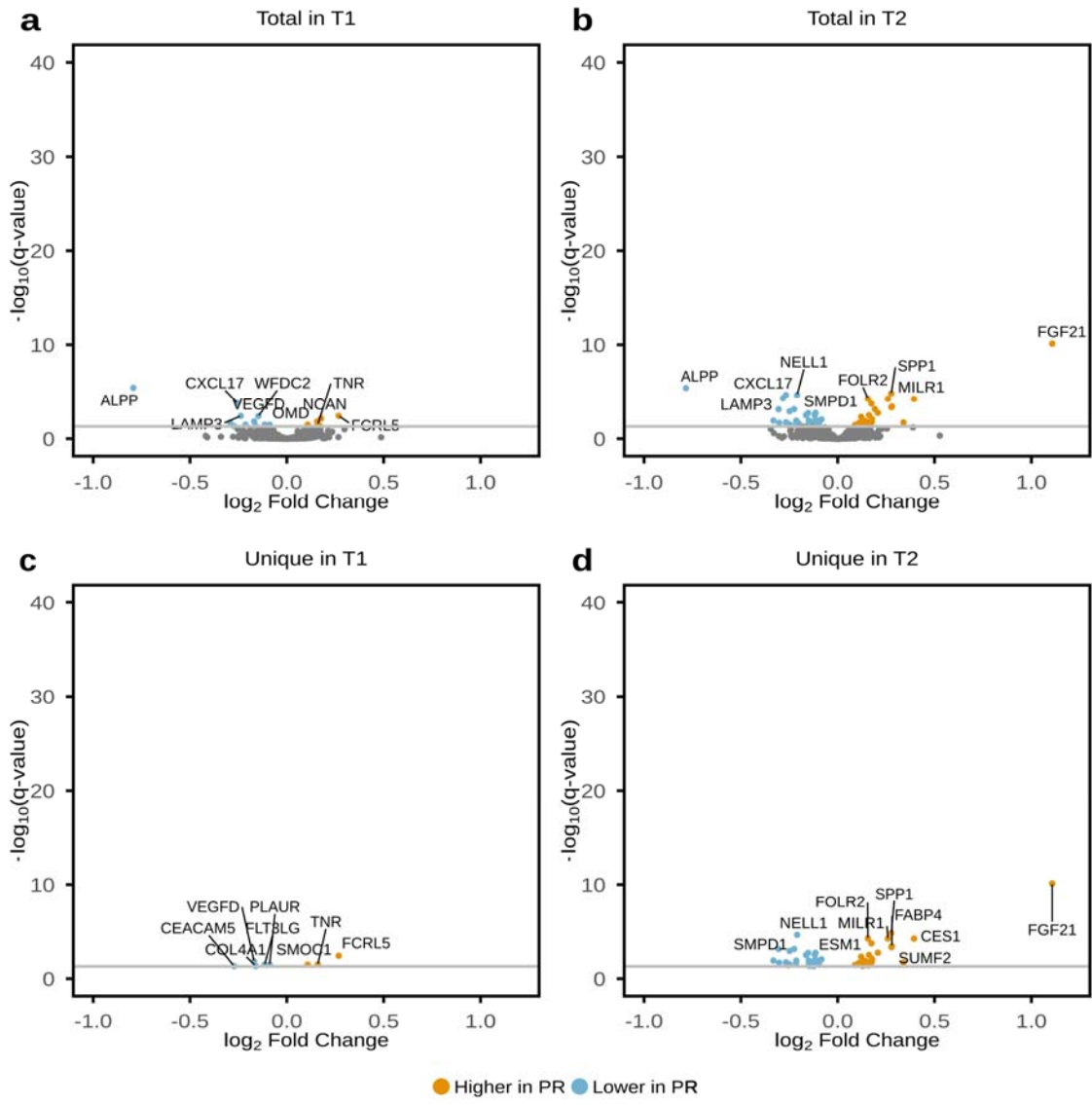
Extended Data Fig. 4. Correlations of metabolite levels with levels of eight proteins with greatest magnitude of APR-linked effects. Spearman correlations between all metabolite levels and the eight proteins highlighted through the heterogeneity analysis have been computed, along with corresponding p-values. Only metabolites with a significant (FDR-adjusted p-value <0.05) correlation with at least one of the eight proteins are shown. Positive correlations are represented in blue and negative ones in red. White squares represent non-significant correlations.



Extended Data Fig. 5. PR-unique DAPs as targets of phase 1-4 drugs. a, Number of phase 1-4 drugs (excluding clinical trials with withdrawn, unknown or terminated status) that target DAPs detected only in the PR group.



Extended Data Fig. 6. Differentially abundant metabolites (DAMs) detected between dietary groups at T1 and at T2. Differences in metabolite profiles between dietary groups are shown in the outer circle for T2 and in the inner circle for T1 (absolute values in panel **a**, ratios and percentages in panel **b**). The $-\log_{10}$ of the FDR-adjusted p-value (q-value) is represented in the y-axis. Yellow bars represent higher levels in the PR group whereas blue bars represent lower levels in the PR group at each timepoint. Metabolites shown in grey are not significant.



Extended Fig. 7. Differentially abundant proteins (DAPs) detected between dietary groups at T1 and at T2. Total DAPs detected at T1 (a) and at T2 (b). Unique DAPs detected at T1 (c) and at T2 (d). DAPs found in lower levels in the PR group are shown in blue whereas DAPs found in higher levels in the PR group are shown in yellow. Proteins shown in grey are not significant.