

1 **Sphincterotomy for Biliary Sphincter of Oddi Disorder and idiopathic Acute Recurrent**
2 **Pancreatitis: THE RESPOND LONGITUDINAL COHORT**
3

4 **Authors:** Gregory A. Coté, MD, MS¹, B. Joseph Elmunzer, MD, MSc², Haley Nitchie, MHA²,
5 Richard S. Kwon, MD³, Field F. Willingham, MD, MPH⁴, Sachin Wani, MD⁵, Vladimir Kushnir,
6 MD⁶, Amitabh Chak, MD⁷, Vikesh Singh, MD, MSc⁸, Georgios Papachristou, MD⁹, Adam
7 Slivka, MD, PhD¹⁰, Martin Freeman, MD¹¹, Srinivas Gaddam, MD¹², Priya Jamidar, MD¹³,
8 Paul Tarnasky, MD¹⁴, Shyam Varadarajulu, MD¹⁵, Lydia D. Foster, MS¹⁶, and Peter B. Cotton,
9 MD²

10
11 **Author affiliation:**

12 ¹ Department of Medicine, Division of Gastroenterology & Hepatology, Oregon Health &
13 Science University

14 ² Department of Medicine, Division of Gastroenterology & Hepatology, Medical University of
15 South Carolina, Charleston, USA

16 ³ Department of Internal Medicine, Division of Gastroenterology & Hepatology, University of
17 Michigan, Ann Arbor, MI

18 ⁴ Department of Medicine, Division of Digestive Diseases, School of Medicine, Emory
19 University, Atlanta, GA

20 ⁵ Department of Medicine, Division of Gastroenterology and Hepatology, University of
21 Colorado Anschutz Medical Campus, Aurora, Colorado, USA

22 ⁶ Department of Medicine, Division of Gastroenterology, Washington University in St. Louis
23 School of Medicine, St. Louis, MO

24 ⁷ Digestive Health Institute, Department of Medicine, Case Western Reserve University,
25 Cleveland, OH

26 ⁸ Division of Gastroenterology, Johns Hopkins Medical Institutions, Baltimore, MD

27 ⁹ Department of Medicine, Division of Gastroenterology & Hepatology, Ohio State University,
28 Columbus, OH

29 ¹⁰ Department of Medicine, University of Pittsburgh, Pittsburgh, PA

30 ¹¹ Department of Medicine, University of Minnesota, Minneapolis, MN

31 ¹² Department of Medicine, Cedars Sinai School of Medicine

32 ¹³ Department of Medicine, Yale University School of Medicine, New Haven, CT

33 ¹⁴ Methodist Digestive Institute, Dallas, TX

34 ¹⁵ Digestive Health Institute, Orlando Health, Orlando, FL

35 ¹⁶ Department of Public Health Science, Medical University of South Carolina, Charleston,
36 USA

37
38
39 **Authorship:**

40 Gregory A Cote, MD, MS (Conceptualization: Lead; Formal analysis: Supporting;
41 Funding acquisition: Lead; Investigation: Lead; Methodology: Lead; Writing – original
42 draft: Lead; Writing – review & editing: Equal)

43 B. Joseph Elmunzer (Investigation: Equal; Writing – review & editing: Equal)

44 Haley Nitchie (Project administration: Lead)

45 Richard S. Kwon (Investigation: Equal; Writing – review & editing: Equal)

46 Field F. Willingham (Investigation: Equal; Writing – review & editing: Equal)

47 Sachin Wani (Investigation: Equal; Writing – review & editing: Equal)

48 Vladimir Kushnir (Investigation: Equal; Writing – review & editing: Equal)

49 Amitabh Chak (Investigation: Equal; Writing – review & editing: Equal)

50 Vikesh Singh (Investigation: Equal; Writing – review & editing: Equal)

51 Georgios Papachristou (Investigation: Equal; Writing – review & editing: Equal)

52 Adam Slivka (Investigation: Equal; Writing – review & editing: Equal)
53 Shyam Varadarajulu (Investigation: Equal; Writing – review & editing: Equal)
54 Martin Freeman (Investigation: Equal; Writing – review & editing: Equal)
55 Srinivas Gaddam (Writing – review & editing: Equal)
56 Priya Jamidar (Writing – review & editing: Equal)
57 Paul Tarnasky (Investigation: Equal; Writing – review & editing: Equal)
58 Lydia D. Foster (Data curation: Lead; Formal analysis: Lead; Funding acquisition:
59 Supporting; Writing – review & editing: Equal)
60 Peter B. Cotton (Conceptualization: Supporting; Formal analysis: Supporting; Writing
61 – review & editing: Equal)
62

63 **Disclosure:** Research reported in this publication was supported by *the National Institute of*
64 *Diabetes and Digestive and Kidney Diseases (NIDDK)* of the National Institutes of Health
65 under award number R01DK115495 (Cote, Foster, Cotton). The content is solely the
66 responsibility of the authors and does not necessarily represent the official views of the
67 National Institutes of Health.
68

69 **Conflict of interest disclosure:** No authors have a relevant conflict of interest.
70

71 **Guarantor of the article:** **Gregory Cote** is accepting full responsibility for the conduct of the
72 study and has had access to the data and control of the decision to publish.
73

74 **Corresponding author contact information:**

75 Gregory Cote
76 3181 SW Sam Jackson Park Rd
77 Mail Code L461
78 Portland, OR 97239-3098
79 E: coteg@ohsu.edu
80 F: 503-494-8776
81

82 **Acronyms**

83

84 SOD Sphincter of Oddi disorders

85 DGBI Disorders of gut-brain interaction

86 CBD Common bile duct

87 iRAP Idiopathic recurrent acute pancreatitis

88 MASLD Metabolic dysfunction associated steatotic liver disease

89 RESPOnD Results of Ercp for SPHincter of Oddi Disorders

90 PROM Patient-reported outcome measures

91 SVI Stent vs. Indomethacin trial

92 IBS Irritable bowel syndrome

93 ULN Upper limit of normal

94 PGIC Patient Global Impression of Change

95 RAPID Recurrent Abdominal Pain Intensity and Disability

96 EPISOD Evaluating Predictors & Interventions in Sphincter of Oddi Dysfunction

97

98 **Abstract**

99 **Word count (limit 250): 249**

100 **Objective:** Sphincter of Oddi Disorders (SOD) are contentious conditions in patients whose
101 abdominal pain, idiopathic acute pancreatitis (iAP) might arise from pressurization at the
102 sphincter of Oddi. The present study aimed to measure the benefit of sphincterotomy for
103 suspected SOD.

104
105 **Design:** Prospective cohort conducted at 14 U.S. centers with 12 months follow-up. Patients
106 undergoing first-time ERCP with sphincterotomy for suspected SOD were eligible:
107 pancreatobiliary-type pain with or without iAP. The primary outcome was defined as the
108 composite of improvement by Patient Global Impression of Change (PGIC), no new or
109 increased opioids, and no repeat intervention. Missing data were addressed by hierarchal,
110 multiple imputation scheme.

111
112 **Results:** Of 316 screened, 213 were enrolled with 190 (89.2%) of these having a dilated bile
113 duct, abnormal labs, iAP, or some combination. By imputation, an average of 122/213 (57.4%
114 [95%CI 50.4-64.4]) improved; response rate was similar for those with complete follow-up
115 (99/161, 61.5%, [54.0-69.0]); of these, 118 (73.3%) improved by PGIC alone. Duct size,
116 elevated labs, and patient characteristics were not associated with response. AP occurred in
117 37/213 (17.4%) at a median of 6 months post-ERCP and was more likely in those with a history
118 of AP (30.9 vs. 2.9%, $p < 0.0001$).

119
120 **Conclusion:** Nearly 60% of patients undergoing ERCP for suspected SOD improve, although
121 the contribution of a placebo response is unknown. Contrary to prevailing belief, duct size and
122 labs are poor response predictors. AP recurrence was common and like observations from prior
123 non-intervention cohorts, suggesting no benefit of sphincterotomy in mitigating future AP
124 episodes.

125
126 **Keywords:** Sphincter of Oddi Dysfunction; Cholangiopancreatography, Endoscopic
127 Retrograde; abdominal pain; acute pancreatitis; Quality of Life; Sphincterotomy

Key Messages
WHAT IS ALREADY KNOWN ON THIS TOPIC
<ul style="list-style-type: none">• It is not clear if the sphincter of Oddi can cause abdominal pain (Functional Biliary Sphincter of Oddi Disorder) and idiopathic acute pancreatitis (Functional Pancreatic Sphincter of Oddi Disorder), and whether ERCP with sphincterotomy can ameliorate abdominal pain or pancreatitis.
WHAT THIS STUDY ADDS
<ul style="list-style-type: none">• Using multiple patient-reported outcome measures, most patients with suspected sphincter of Oddi disorder improve after ERCP with sphincterotomy.• Duct size, elevated pancreatobiliary labs, and baseline patient characteristics are not independently associated with response.• There is a high rate of recurrent acute pancreatitis within 12 months of sphincterotomy in those with a history of idiopathic acute pancreatitis.
HOW THIS STUDY MIGHT AFFECT RESEARCH, PRACTICE, OR POLICY
<ul style="list-style-type: none">• Since a discrete population with a high (> 80-90%) response rate to sphincterotomy for suspected pancreatobiliary pain could not be identified, there is a need for additional observational and interventional studies that include phenotyping of patients using novel imaging or biochemical biomarkers.• There remains a pressing need for quantitative nociceptive biomarkers to distinguish pancreatobiliary pain from other causes of abdominal pain or central sensitization.• Discovery of blood-, bile-, or imaging-based biomarkers for occult microlithiasis and pancreatitis may be helpful in predicting who is likely to benefit from sphincterotomy.

128

129 Introduction

130 Abdominal pain is common and often associated with overlapping disorders of gut-
131 brain interaction (DGBI). Functional sphincter of Oddi disorders (SOD) are defined by
132 episodic abdominal pain that bear a resemblance to discomfort originating from the biliary
133 tree, pancreas, or both,¹ but equating pain unequivocally with SOD is not possible.² Few
134 disorders incite more controversy than SOD since there is no diagnostic test to prove that the
135 sphincter is the source of pain and prospective studies evaluating the benefit of endoscopic
136 sphincterotomy have been inconsistent.³⁻⁶

137 Physician-defined characteristics of SOD include the presence of a dilated common
138 bile duct (CBD), elevated liver or pancreas chemistries associated with pain,⁷ and a more
139 discrete subtype which are those idiopathic recurrent acute pancreatitis (iRAP). The latter
140 represents a diagnostic spectrum ranging from radiographic changes definitive for acute
141 pancreatitis to only pain with elevated pancreas biochemistries.⁸ In fact, experts do not
142 consider pain associated with a dilated duct and abnormal biochemistries as SOD: this has
143 been renamed papillary stenosis and sphincterotomy is recommended based on historical
144 studies.⁵

145 Physician-defined characteristics of SOD are not as objective as originally conceived.
146 Duct dilation is an imperfect clinical biomarker given the prevalence of physiologic dilation
147 that occurs with cholecystectomy, aging, and opioid use.⁹ Similarly, the specificity of elevated
148 liver chemistries as an SOD indicator is compromised by the high baseline rate of metabolic
149 dysfunction associated steatotic liver disease (MASLD, estimated prevalence 10-35%)¹⁰ as
150 well as abnormal aminotransferase levels in the general population (estimated prevalence
151 10-30%).¹¹⁻¹³ Finally, iRAP is a subjective diagnosis since physicians commonly diagnose
152 acute pancreatitis in the absence of radiographic changes and deeming a case idiopathic
153 varies across clinical practices and individual cases.

154 Given inconsistent outcomes and variability in current clinical practice, the Results of

155 ERCP for SPhincter of Oddi Disorders (RESPOnD) was a multicenter, prospective cohort
156 study designed to measure the 12-month response to sphincterotomy, as defined by patient-
157 reported outcome measures (PROMs), among patients undergoing ERCP for suspected
158 SOD.
159

160 **Methods**

161 *Study Design, Setting, and Participants*

162 RESPOND was a prospective cohort study conducted at 14 U.S. medical centers. Eligible
163 patients included those age ≥ 18 years and offered ERCP with sphincterotomy for suspected
164 SOD and no history of endoscopic sphincterotomy between January 2018 and March 2022.
165 This included all SOD subtypes: 1) Biliary: pain with a dilated bile duct, elevated liver
166 chemistries, or both, 2) Pancreatic: idiopathic acute pancreatitis, diagnosed radiographically
167 or by elevated pancreas chemistries alone, and 3) Mixed type: characteristics of both Biliary
168 and Pancreatic. For centers participating in the Stent vs. Indomethacin trial (SVI),¹⁴ patients
169 could be enrolled after their ERCP and then followed prospectively to the primary endpoint.
170 Patients with chronic pancreatitis, pregnancy, or a psychiatric disorder that precluded
171 obtaining informed consent were excluded (***study protocol is available in supplemental***
172 ***materials***). A history of cholecystectomy was not required for participation if the treating
173 physician recommended ERCP as the initial intervention. Similarly, sphincter of Oddi
174 manometry was not required since most participating providers performed empiric
175 sphincterotomies and manometry's poor reproducibility and clinical utility.¹⁵ The study was
176 reviewed and approved by the Human Subjects Protection Office at each participating center
177 before commencement of enrollment.

178 After signing informed consent, patients completed a baseline assessment before the
179 ERCP procedure during which they completed a series of validated questionnaires designed
180 to characterize their pain, pain-related disability, relevant medical history, and factors such as
181 underlying somatization, depression, anxiety, expectation of response, and recent opioid
182 utilization (***supplementary table 1***). Bile duct diameter was recorded using magnetic
183 resonance cholangiopancreatography, computed tomography, and ERCP, with dilation being
184 defined as ≥ 12 mm on any.⁶ A less stringent definition for bile duct dilation was considered
185 but did not impact the results significantly (data not shown). Similarly, an abnormal

186 biochemistry was defined by a liver biochemistry (AST, ALT, or alkaline phosphatase) > 2x
187 upper limit of normal (ULN) or > 3x ULN for pancreas chemistry (amylase or lipase).

188 During ERCP, the treating physician performed biliary, pancreatic, or dual
189 sphincterotomies per their clinical judgement. Patients received periprocedural rectal
190 indomethacin and a prophylactic pancreatic duct stent was placed per clinical judgement or
191 per treatment allocation in the SVI trial if applicable.

192 Following ERCP, patients were followed quarterly in-person or by telephone for 12
193 months. During these visits, patients completed a series of validated, patient-reported
194 outcome measures, queried for recent opioid and other medication use for their abdominal
195 symptoms, hospitalizations for abdominal symptoms, and whether additional interventions
196 were performed for their symptoms.¹⁶

197

198 *Primary and secondary outcomes*

199 The primary outcome definition of success was determined at 12 months and was a
200 composite of the Patient Global Impression of Change (PGIC) rated as “much improved” or
201 “very much improved”, without the need for a repeat ERCP or other abdominal intervention,
202 and the same or less days of prescription opioid use during month 12 compared to the month
203 preceding the index ERCP. Secondary outcomes included the change (from baseline) in
204 pain-related disability measured by the Recurrent Abdominal Pain Intensity and Disability
205 (RAPID) instrument,¹⁷ physical and mental health summary scores as well as sub-scores
206 derived from PROMIS-29.¹⁸ Acute pancreatitis, defined by revised Atlanta criteria¹⁹, was
207 deemed non-iatrogenic unless it occurred within 30 days of the index or a follow-up ERCP.

208

209 *Statistical analysis*

210 The original sample size estimate was 360 subjects enrolled at sites participating in the SVI
211 trial. This was based on SVI’s original sample size and rate of treatment naïve subjects

212 enrolled in SVI at the time of this study's inception (33%); RESPOND enrollment began 28
213 months after SVI. A sample size of 360 would have resulted in a confidence interval width on
214 our estimated proportion of success to be approximately $10\pm 5\%$. Enrollment in RESPOND
215 was lower than anticipated because of a smaller proportion of eligible subjects in SVI (24%
216 after commencement of RESPOND) and the COVID-19 pandemic. Recruitment was
217 terminated early due to funding expiration and analysis demonstrating a confidence interval
218 width like our original estimate.

219 The prespecified primary analysis was an unadjusted primary outcome success
220 proportion with a two-sided 95% confidence interval. Secondary outcomes were assessed for
221 association with the primary outcome via a generalized linear model with log link and Poisson
222 distribution, with the primary outcome as the dependent variable and the secondary outcome
223 as the independent variable. Models were adjusted for the baseline value of the secondary
224 outcome. The Poisson distribution was used due to convergence issues with the prespecified
225 binomial distribution. For safety outcomes, the unadjusted proportion and two-sided 95%
226 confidence interval was estimated.

227 For subjects missing primary outcome data, we followed a hierarchical imputation
228 scheme, which included multiple imputation. Multiple imputation assumed data were missing
229 at random and a sensitivity analysis was conducted to assess the impact of missing data;
230 multiple imputation allows for the uncertainty of missing data by creating several different
231 plausible imputed data sets and appropriately combining results obtained from each of
232 them.²⁰

233 Two multivariate logistic models associated with the imputed primary outcome were
234 constructed. The first model considered physician-defined characteristics of SOD: elevated
235 liver chemistry $>2x$ ULN, bile duct diameter $\geq 12\text{mm}$, and history of idiopathic acute
236 pancreatitis. The second model considered baseline patient characteristics suspected to
237 have an association with the primary outcome by univariate testing ($p \leq 0.10$).

238 Results

239 *Enrollment and follow-up*

240 During the study period, 316 patients were screened for eligibility and 216 were consented to
241 participate. Three were excluded due to inability to complete ERCP (2) or missing informed
242 consent documentation (1). Of the remaining 213 subjects, 179 (84.0%) were enrolled prior to
243 their index ERCP and 34 (16.0%) after ERCP but prior to their assessment of the primary
244 outcome (**figure 1**). The baseline demographics of these two subgroups were similar (data
245 not shown). A total of 169 (79.3%) completed 12-month follow-up, 36 (16.9%) were lost to
246 follow-up, 5 (2.3%) withdrew consent, and 3 (1.4%) died.

247

248 *Baseline characteristics*

249 The cohort was predominantly female sex (80.8%), non-Hispanic White (82.6%), and middle
250 aged (50.6 ± 14.9 years, **table 1**). 110/213 (51.6%) had a history of at least one episode of
251 acute pancreatitis in their lifetime, 99 (46.5%) within 12 months of their ERCP. The majority
252 had previously undergone a cholecystectomy, were nonsmokers at the time of enrollment,
253 and drank little to no alcohol. A substantial number of patients had concomitant comorbidities
254 suspected to confound their clinical presentation with abdominal pain, abnormal liver
255 chemistries, or both, including irritable bowel syndrome (41.8%), MASLD (19.7%),
256 fibromyalgia (14.1%), and gastroparesis (8.0%). Most (190/213, 89.2%) subjects presented
257 with one or more physician-defined characteristics of SOD (duct dilation, abnormal
258 pancreatobiliary biochemistries, and/or acute pancreatitis history), leaving 23 (10.8%) with
259 none of these features, suggestive of type III SOD using the Rome III definition.

260 The majority (143/169, 84.6%) had some degree of abdominal pain within 7 days of
261 their index ERCP (**table 2**); the median number of pain days was 30 in the last 90, rated as a
262 median of 7/10 and resulting in a median pain burden of 180 (interquartile range: 60, 495).
263 Most patients characterized their pain as nociceptive (112/168, 66.7%). Approximately 1/3rd

264 of patients had low physical or mental health, whereas nearly half of participants had a high
265 likelihood of somatization. Opioids were used within 30 days of ERCP in 62/171 (36.3%). The
266 majority (90/166, 54.2%) expected their pain to be very much better or completely gone to
267 consider the procedure as successful.

268

269 *Procedure characteristics*

270 During ERCP, only 2/212 (0.9%) of patients underwent sphincter of Oddi manometry.
271 However, most patients underwent a biliary sphincterotomy (204/213, 95.8%), pancreatic
272 sphincterotomy (26/213, 12.2%), or both (20, 9.4%); 2 (0.9%) underwent a precut
273 sphincterotomy alone and 1 (0.5%) did not have any sphincterotomy performed. A serious
274 adverse event developed within 30 days of the index ERCP in 68/213, (31.9%); 22/213
275 (10.3%) developed post-ERCP pancreatitis and 1/213 (0.5%) perforation (**supplementary**
276 **table 2**).

277

278 *Primary outcome: improvement following ERCP*

279 Among 213 patients who underwent ERCP, an average of 122 (57.4% [95%CI 50.4-64.4])
280 met the imputed primary outcome for success at 12-month follow-up. The response rate
281 changed minimally using the partial hierarchal imputation method: 103/179 (57.5% [50.3-
282 64.8]). In a sensitivity analysis restricted to patients with complete follow-up data (n=161), the
283 response rate was similar (99/161, 61.5%, [54.0-69.0]). Of those with complete follow-up
284 data, 118 (73.3%) met the primary success by PGIC alone but 19 failed due to the need for
285 additional procedures (n=15), new or increased need for opioids (n=3), or both (n=1).

286

287 *Secondary outcome: development of acute pancreatitis > 30 days after ERCP*

288 During 12-month follow-up, 37/213 (17.4%) developed at least one episode of non-iatrogenic
289 acute pancreatitis at a median of 6 months after the index ERCP. Non-iatrogenic acute

290 pancreatitis was more likely if the patient had a history of acute pancreatitis prior to the index
291 ERCP (30.9%, $p < 0.0001$, **figure 2**), but some events occurred in those with no prior history of
292 acute pancreatitis (2.9%).

293

294 *Relationship between physician defined SOD, patient characteristics, and outcome*

295 There were no significant differences in success rates when patients were classified using
296 the physician-defined criteria for SOD, with success rates in biliary type I (51.3%), type II
297 (51.6%), type III (53.6%), pancreatic (56.1%), and mixed type (67.5%) being similar
298 ($p = 0.4152$) (**table 3**). Similarly, a history of acute pancreatitis (60.7 vs. 53.8%, $p = 0.3560$), an
299 elevated liver chemistry $> 2x$ ULN (60.4 vs. 56.1%, $p = 0.5627$), and bile duct dilation ≥ 12 mm
300 (56.8 vs. 57.6%, $p = 0.8062$) did not correspond with a higher likelihood of success. Multiple
301 patient characteristics potentially associated with response to sphincterotomy were evaluated
302 by univariate analysis, with key comparisons summarized in **table 4**. The most significant
303 negative associations with the primary outcome were prescription opioid use in the last 30
304 days (46.8 vs. 66.3%, $p = 0.0236$), low baseline physical health (50.0 vs. 66.2%, $p = 0.0512$),
305 and high likelihood of somatization at the time of index ERCP (52.6 vs. 67.0%, $p = 0.0750$).
306 There was no association between response to ERCP and a past medical history of irritable
307 bowel syndrome, MASLD, gastroparesis, smoking, and pain subtype (nociceptive or
308 neuropathic).

309

310 *Multivariate analysis*

311 Physician-defined characteristics of SOD were not associated with a higher likelihood of
312 response to ERCP with sphincterotomy (**table 5**). In a regression model which considered
313 patient characteristics associated univariately ($p \leq 0.10$) with response, none of these factors
314 proved to be independently associated with improvement. Recent opioid use (multivariate
315 odds ratio 0.53 [0.26 – 1.08], $p = 0.0810$) appeared to be the most important patient factor but

316 did not remain statistically significant in the final model.

317

318 *Secondary outcomes*

319 Success defined using the prespecified primary outcome corresponded with change in pain-
320 related disability (mean change in RAPID score from baseline, -41.2 vs. -28.6 for those who
321 failed the primary outcome, $p = 0.0127$). There was no association between change in RAPID
322 score and bile duct diameter in the complete case population: consistent with the analysis of
323 outcome according to Rome III SOD subtype, there was no correlation between increasing
324 bile duct diameter and reduction in RAPID score ($p=0.6303$, *supplemental figure 1*).
325 Summary physical (6.0 vs. 2.8, $p = 0.0294$) and mental (7.6 vs. 3.2, $p=0.0140$) health scores
326 improved significantly among patients meeting the study's primary outcome for success. In
327 the complete case population and except for anxiety, change in PROMIS-29 sub-scores was
328 significantly associated with the study's primary outcome (*supplementary table 3*). At the
329 12-month visit, the number of patients who required opioids for abdominal pain in the past 30
330 days decreased from 62/171 (36.5%) to 24/169 (14.2%).

331

332

333

334 Discussion

335 *Sphincterotomy for suspected pancreatobiliary pain*

336 Is SOD a fabricated etiology for abdominal pain? Many clinicians do not believe SOD is real,
337 and even fewer admit to performing ERCP to ameliorate it (at least by coding data).^{21, 22} The
338 RESPOnD cohort represents a population who share a common characteristic: their treating
339 physician interpreted their abdominal pain and other signs as concerning for SOD and
340 recommended an ERCP with sphincterotomy to address them. This is a common problem,
341 especially in the U.S. where > 1 million cholecystectomies are performed annually and a
342 growing proportion return for a first-time ERCP > 1 year postoperatively; these individuals
343 have higher rates of morbidity following these delayed ERCPs, likely because many have
344 SOD-like characteristics.²³ Clinicians have the daunting task of trying to determine the
345 etiology of a patient's abdominal pain when it is clear that pain may manifest similarly yet
346 originate from multiple organs and is often confounded by overlapping disorders of gut brain
347 interaction.^{2, 24-26} This issue of cross-sensitization imposes a substantial challenge in
348 differentiating pain originating from the pancreas, biliary tree, or another organ. A reliable
349 blood or imaging test to confirm that pain is originating in the gallbladder, sphincter of Oddi,
350 or pancreas is lacking, and RESPOnD confirms that standard pancreatobiliary chemistries
351 and duct size are inadequate prognosticators. Last, patients with abdominal pain severe or
352 sustained enough to prompt referral to RESPOnD providers are at-risk for central
353 sensitization;²⁷ this results in heightened pain signaling anywhere along the nervous system
354 and probably influences response to local interventions such as sphincterotomy. Despite
355 these challenges, most patients improved after 12 months of follow-up using RESPOnD's
356 primary outcome definition and numerous secondary outcomes derived from PROMs.

357 The present study attempts to address the hypothesis that SOD is a cause of
358 abdominal pain by showing that ERCP with sphincterotomy can ameliorate these symptoms.
359 Is the observed response rate – 57% using the pre-defined primary outcome and as high as

360 73% when using the PGIC alone – too high for a placebo? The placebo response is greatest
361 for patients suffering from the most severe pain and interventions (as opposed to drugs) have
362 a greater placebo effect, especially when offered as pain treatments.²⁸⁻³¹ In the “Evaluating
363 Predictors & Interventions in Sphincter of Oddi Dysfunction” (EPISOD) study which enrolled
364 patients with pain suspicious to their clinician for SOD pain but normal ducts, no pancreatitis,
365 and few with limited elevation in biochemistries, the placebo response was 37%; this might
366 have been higher using the PGIC as part of EPISOD’s composite primary outcome.³ The
367 observed outcomes are similar to: 1) the placebo response in a randomized trial of a
368 protease inhibitor for painful chronic pancreatitis, and 2) the response to endoscopic therapy
369 in an open-label randomized trial compared to surgery.^{32, 33} Other factors which may increase
370 the placebo response include the patient’s expectation of how much the intervention will help
371 and confidence with which the clinician explains the efficacy of their intervention.^{28, 29, 34, 35} We
372 did not measure the white coat effect, but more than half of patients expected complete or
373 near complete resolution of their symptoms. The magnitude of the intervention (ERCP and its
374 known risks) and the patient’s high expectation imply a substantial placebo response. An
375 optimist could reasonably argue that a helpful placebo is still helpful... It is reassuring that
376 despite the rate of serious adverse events within 30 days of ERCP, very few patients (< 6%)
377 believed they were worse 12 months later. Another placebo-controlled randomized trial would
378 be necessary to differentiate the sphincterotomy response from the placebo response.

379

380 *Physician-defined characteristics of SOD correlate poorly with response*

381 For decades, physicians have used duct dilation and biochemistries as objective markers for
382 impaired drainage through the sphincter of Oddi. In contrast to historic trials of SOD,^{5, 6} the
383 present study demonstrates that physician-defined characteristics of SOD correlate poorly
384 with response to sphincterotomy and is consistent with prior observations.³⁶ The reasons are
385 undoubtedly multifactorial. First, the more widespread use of MRCP and endoscopic

386 ultrasound means RESPOND excluded patients with choledocholithiasis who might have
387 been classified as SOD in older cohorts. Second, it is more common for gastroenterologists
388 to consult on patients with abdominal pain who are already prescribed opioids for
389 nonmalignant indications – abdominal pain or otherwise.³⁷ Opioids are a major confounder
390 since they cause bile duct dilation, elevated liver chemistries, and even acute pancreatitis;
391 44% of recent opioid users had a bile duct ≥ 12 mm, as compared to 31% for those without.
392 Furthermore, recent opioids are more likely to associate with opioid-induced central
393 sensitization, disruption to the gut microbiome, and their GI side effects overlap with the
394 symptoms that mimic SOD; none of these are likely to help the chance of benefiting from
395 sphincterotomy.

396

397 *The importance of pain characteristics in response*

398 Nearly half of RESPOND participants met criteria for underlying somatization at the time of
399 enrollment. This likely represents a combination of individuals with a primary functional
400 somatic syndrome and those who have developed central sensitization due to their chronic
401 abdominal pain.²⁷ Differentiating these pain subtypes is beyond the scope of this study, but
402 the finding that 72% of individuals without somatization improved is important because a
403 placebo response is unlikely to explain this completely. Similarly, patients least impacted by
404 their pain, defined by normal mental and physical health, and who did not require opioids to
405 manage their pain experienced response rates $> 70\%$. These are populations who seem best
406 to consider offering a high-risk intervention such as ERCP.

407

408 *Acute pancreatitis*

409 Approximately half of RESPOND participants presented with a history of acute pancreatitis
410 prior to their index ERCP. While a natural history group is lacking in RESPOND, the high
411 (31%) recurrence rate of pancreatitis at a median of 6 months after ERCP suggests

412 sphincterotomy is ineffective in reducing the rate of acute pancreatitis in this population. The
413 observed recurrence rate is remarkably like an earlier randomized trial comparing biliary and
414 pancreatic sphincterotomy for patients with iRAP⁴ and worse than the reported recurrence
415 rate (15.1%) from a meta-analysis of 17 studies and 4,754 individuals classified as idiopathic
416 acute pancreatitis.³⁸ Having acute pancreatitis prior to the index ERCP was clearly associated
417 with a higher likelihood of developing acute pancreatitis during follow-up and even
418 comparable to patients whose pancreatitis is attributed to alcohol misuse and fail to quit.³⁹⁻⁴²
419 RESPOnd's prospective study design with scheduled research follow-up assessments might
420 have caused an inflation of the observed rate of AP when compared to studies whose
421 approach to follow-up is more passive (e.g., a measurement bias). It is also noteworthy that
422 3% of individuals with no prior history of acute pancreatitis developed an attack during the
423 first 12 months of follow-up. All of this is in addition to a significant risk of post-ERCP
424 pancreatitis (10.3%). For patients with iRAP, these data argue against a short-term benefit of
425 ameliorating subsequent pancreatitis episodes.

426

427 *Limitations*

428 The principal strengths of RESPOnd include its multicenter and prospective study design
429 with use of validated questionnaires to define baseline patient characteristics and PROMs.
430 Although some patients were lost to follow-up before reaching the 12-month primary
431 outcome, the success rate was similar in a sensitivity analysis restricted to patients with
432 complete follow-up data. Additionally, the success rate did not change substantially when
433 considering alternatives to the PGIC, including a reduction in pain-related disability using the
434 same definition from the EPISOD trial (RAPID score of < 6). These observations reassure
435 that the imputation method did not introduce bias and that the study's primary outcome was
436 reproducible using other PROMs. The use of neuromodulators and antispasmodics within 30
437 days of enrollment was low (49% and 28%, respectively). While this is likely due to these

438 agents' lack of efficacy when used earlier in their clinical course (thus prompting consultation
439 at an endoscopy referral center), the overall rate of pharmacotherapy failure at the time of
440 enrollment was not queried due to concerns about recall bias. Another limitation is the
441 heterogeneity of the patient cohort, including some patients who did not have a history of
442 cholecystectomy and a mixture of patients with biliary, pancreatic, or both subtypes of SOD.
443 Although SOD is classically defined as a post-cholecystectomy syndrome, the study team
444 elected to include these cases to maximize the study's generalizability since the decision to
445 perform ERCP was left to the discretion of the patient and treating physician based on the
446 suspicion that their abdominal pain was originating in the biliary tree, pancreas, or both. Our
447 subgroup analyses do not suggest that classically defined SOD subtypes perform differently.
448 A history of cholecystectomy was not associated with a difference in success following the
449 index ERCP (data not shown); 6 patients proceeded to cholecystectomy during follow-up,
450 and all 4 who completed follow up at 12 months reported improvement. Similarly, patients
451 with a history of acute pancreatitis as part of their SOD phenotype experienced similar
452 response rates (by PROMs) to those with classically defined biliary SOD. Last, there is a real
453 possibility of referral bias in this cohort. Patients referred to tertiary centers for suspected
454 SOD may represent those with the most severe phenotype – and thus most susceptible to
455 central sensitization and cross-sensitization. It is possible that there are unmeasured
456 confounders which influenced the response rate. Despite its multicenter design and 4 years
457 of recruitment, the final cohort was smaller than originally anticipated due to changes in
458 practice patterns at participating centers and other unmeasured factors, raising the possibility
459 of type II statistical error.

460

461 *Conclusion*

462 RESPOnD demonstrates that nearly 60% patients who undergo ERCP for suspected SOD
463 feel better after 12 months of follow-up, although the component attributable to a placebo

464 response is unclear. Physician-defined characteristics such as duct size, lab tests, and an
465 objective history of acute pancreatitis correlate poorly with a person’s likelihood of benefiting
466 from the procedure, meaning the traditional Rome III classification system is a poor guide to
467 deciding who should be offered ERCP. Despite high technical success rates of ERCP with
468 sphincterotomy, patients with antecedent acute pancreatitis are still likely to develop a
469 recurrent attack. The most important prognostic factors for response to ERCP are determined
470 by the patient, more nuanced, and many are difficult to precisely diagnose in the clinic: those
471 without underlying somatization – a surrogate measure of disordered pain processing and/or
472 central sensitization – no recent use of opioids, and least disabled by their symptoms stand
473 the greatest odds of improvement. Those who are least desperate for intervention seem to
474 stand the best chance of improvement. RESPOND highlights the importance of a careful
475 history, the need for more objective pain biomarkers, and additional research into the placebo
476 response of ERCP when performed for pain. In the meantime, clinicians should continue to
477 tread cautiously and avoid the temptation to offer ERCP enthusiastically when “objective”
478 features of SOD are present: they may open the door to a slippery slope.
479

480 References

- 481 1. Cotton PB, Elta GH, Carter CR, et al. Rome IV. Gallbladder and Sphincter of Oddi
482 Disorders. *Gastroenterology* 2016;150:1420-1429.
- 483 2. Hreinsson JP, Tornblom H, Tack J, et al. Factor Analysis of the Rome IV Criteria for
484 Major Disorders of Gut-Brain Interaction (DGBI) Globally and Across Geographical, Sex,
485 and Age Groups. *Gastroenterology* 2023;164:1211-1222.
- 486 3. Cotton PB, Durkalski V, Romagnuolo J, et al. Effect of endoscopic sphincterotomy for
487 suspected sphincter of Oddi dysfunction on pain-related disability following
488 cholecystectomy: the EPISOD randomized clinical trial. *JAMA* 2014;311:2101-9.
- 489 4. Cote GA, Imperiale TF, Schmidt SE, et al. Similar efficacies of biliary, with or without
490 pancreatic, sphincterotomy in treatment of idiopathic recurrent acute pancreatitis.
491 *Gastroenterology* 2012;143:1502-1509 e1.
- 492 5. Toouli J, Roberts-Thomson IC, Kellow J, et al. Manometry based randomised trial of
493 endoscopic sphincterotomy for sphincter of Oddi dysfunction. *Gut* 2000;46:98-102.
- 494 6. Geenen JE, Hogan WJ, Dodds WJ, et al. The efficacy of endoscopic sphincterotomy
495 after cholecystectomy in patients with sphincter-of-Oddi dysfunction. *N Engl J Med*
496 1989;320:82-7.
- 497 7. Behar J, Corazziari E, Guelrud M, et al. Functional gallbladder and sphincter of oddi
498 disorders. *Gastroenterology* 2006;130:1498-509.
- 499 8. Guda NM, Trikudanathan G, Freeman ML. Idiopathic recurrent acute pancreatitis.
500 *Lancet Gastroenterol Hepatol* 2018;3:720-728.
- 501 9. Barakat MT, Banerjee S. Incidental biliary dilation in the era of the opiate epidemic: High
502 prevalence of biliary dilation in opiate users evaluated in the Emergency Department.
503 *World J Hepatol* 2020;12:1289-1298.
- 504 10. Powell EE, Wong VW, Rinella M. Non-alcoholic fatty liver disease. *Lancet*
505 2021;397:2212-2224.
- 506 11. Ruhl CE, Everhart JE. Upper limits of normal for alanine aminotransferase activity in the
507 United States population. *Hepatology* 2012;55:447-54.
- 508 12. Clark JM, Brancati FL, Diehl AM. The prevalence and etiology of elevated
509 aminotransferase levels in the United States. *Am J Gastroenterol* 2003;98:960-7.
- 510 13. Ioannou GN, Boyko EJ, Lee SP. The prevalence and predictors of elevated serum
511 aminotransferase activity in the United States in 1999-2002. *Am J Gastroenterol*
512 2006;101:76-82.
- 513 14. Elmunzer BJ, Foster LD, Serrano J, et al. Indomethacin with or without prophylactic
514 pancreatic stent placement to prevent pancreatitis after ERCP: a randomised non-
515 inferiority trial. *Lancet* 2024;403:450-458.
- 516 15. Suarez AL, Pauls Q, Durkalski-Mauldin V, Cotton PB. Sphincter of Oddi Manometry:
517 Reproducibility of Measurements and Effect of Sphincterotomy in the EPISOD Study. *J*
518 *Neurogastroenterol Motil* 2016;22:477-82.
- 519 16. Cote GA, Nitchie H, Elmunzer BJ, et al. Characteristics of Patients Undergoing
520 Endoscopic Retrograde Cholangiopancreatography for Sphincter of Oddi Disorders. *Clin*
521 *Gastroenterol Hepatol* 2022;20:e627-e634.
- 522 17. Durkalski V, Stewart W, MacDougall P, et al. Measuring episodic abdominal pain and
523 disability in suspected sphincter of Oddi dysfunction. *World J Gastroenterol*
524 2010;16:4416-21.
- 525 18. Hays RD, Spritzer KL, Schalet BD, Cella D. PROMIS((R))-29 v2.0 profile physical and
526 mental health summary scores. *Qual Life Res* 2018;27:1885-1891.
- 527 19. Banks PA, Bollen TL, Dervenis C, et al. Classification of acute pancreatitis--2012:
528 revision of the Atlanta classification and definitions by international consensus. *Gut*
529 2013;62:102-11.

- 530 20. Li P, Stuart EA, Allison DB. Multiple Imputation: A Flexible Tool for Handling Missing
531 Data. *JAMA* 2015;314:1966-7.
- 532 21. Smith ZL, Shah R, Elmunzer BJ, Chak A. The Next EPISOD: Trends in Utilization of
533 Endoscopic Sphincterotomy for Sphincter of Oddi Dysfunction from 2010-2019. *Clin*
534 *Gastroenterol Hepatol* 2022;20:e600-e609.
- 535 22. Watson RR, Klapman J, Komanduri S, et al. Wide disparities in attitudes and practices
536 regarding Type II sphincter of Oddi dysfunction: a survey of expert U.S. endoscopists.
537 *Endosc Int Open* 2016;4:E941-6.
- 538 23. Thiruvengadam NR, Saumoy M, Schaubel DE, et al. Rise In First-Time ERCP For
539 Benign Indications >1 Year After Cholecystectomy Is Associated With Worse Outcomes.
540 *Clin Gastroenterol Hepatol* 2024.
- 541 24. Doran FS. The sites to which pain is referred from the common bile-duct in man and its
542 implication for the theory of referred pain. *Br J Surg* 1967;54:599-606.
- 543 25. Kingham JG, Dawson AM. Origin of chronic right upper quadrant pain. *Gut* 1985;26:783-
544 8.
- 545 26. Chapman WP, Herrera R, Jones CM. A comparison of pain produced experimentally in
546 lower esophagus, common bile duct, and upper small intestine with pain experienced by
547 patients with diseases of biliary tract and pancreas. *Surg Gynecol Obstet* 1949;89:573-
548 82.
- 549 27. Bourke JH, Langford RM, White PD. The common link between functional somatic
550 syndromes may be central sensitisation. *J Psychosom Res* 2015;78:228-36.
- 551 28. Dettori JR, Norvell DC, Chapman JR. The Art of Surgery: The Strange World of the
552 Placebo Response. *Global Spine J* 2019;9:680-683.
- 553 29. Doherty M, Dieppe P. The "placebo" response in osteoarthritis and its implications for
554 clinical practice. *Osteoarthritis Cartilage* 2009;17:1255-62.
- 555 30. Gu AP, Gu CN, Ahmed AT, et al. Sham surgical procedures for pain intervention result
556 in significant improvements in pain: systematic review and meta-analysis. *J Clin*
557 *Epidemiol* 2017;83:18-23.
- 558 31. Jonas WB, Crawford C, Colloca L, et al. To what extent are surgery and invasive
559 procedures effective beyond a placebo response? A systematic review with meta-
560 analysis of randomised, sham controlled trials. *BMJ Open* 2015;5:e009655.
- 561 32. Hart PA, Osypchuk Y, Hovbakh I, et al. A Randomized Controlled Phase 2 Dose-Finding
562 Trial to Evaluate the Efficacy and Safety of Camostat in the Treatment of Painful Chronic
563 Pancreatitis: The TACTIC Study. *Gastroenterology* 2023.
- 564 33. Issa Y, Kempeneers MA, Bruno MJ, et al. Effect of Early Surgery vs Endoscopy-First
565 Approach on Pain in Patients With Chronic Pancreatitis: The ESCAPE Randomized
566 Clinical Trial. *JAMA* 2020;323:237-247.
- 567 34. Rossettini G, Campaci F, Bialosky J, et al. The Biology of Placebo and Nocebo Effects
568 on Experimental and Chronic Pain: State of the Art. *J Clin Med* 2023;12.
- 569 35. Jones MP, Guthrie-Lyons L, Sato YA, Talley NJ. Factors Associated With Placebo
570 Treatment Response in Functional Dyspepsia Clinical Trials. *Am J Gastroenterol*
571 2023;118:685-691.
- 572 36. Freeman ML, Gill M, Overby C, Cen YY. Predictors of outcomes after biliary and
573 pancreatic sphincterotomy for sphincter of oddi dysfunction. *J Clin Gastroenterol*
574 2007;41:94-102.
- 575 37. Keyes KM, Rutherford C, Hamilton A, et al. What is the prevalence of and trend in opioid
576 use disorder in the United States from 2010 to 2019? Using multiplier approaches to
577 estimate prevalence for an unknown population size. *Drug Alcohol Depend Rep* 2022;3.
- 578 38. Hajibandeh S, Jurdon R, Heaton E, et al. The risk of recurrent pancreatitis after first
579 episode of acute pancreatitis in relation to etiology and severity of disease: A systematic

- 580 review, meta-analysis and meta-regression analysis. *J Gastroenterol Hepatol*
581 2023;38:1718-1733.
- 582 39. Lankisch PG, Breuer N, Bruns A, et al. Natural history of acute pancreatitis: a long-term
583 population-based study. *Am J Gastroenterol* 2009;104:2797-805; quiz 2806.
- 584 40. Yadav D, O'Connell M, Papachristou GI. Natural history following the first attack of acute
585 pancreatitis. *Am J Gastroenterol* 2012;107:1096-103.
- 586 41. Ahmed Ali U, Issa Y, Hagensars JC, et al. Risk of Recurrent Pancreatitis and
587 Progression to Chronic Pancreatitis After a First Episode of Acute Pancreatitis. *Clin*
588 *Gastroenterol Hepatol* 2016;14:738-46.
- 589 42. Das R, Clarke B, Tang G, et al. Endoscopic sphincterotomy (ES) may not alter the
590 natural history of idiopathic recurrent acute pancreatitis (IRAP). *Pancreatology*
591 2016;16:770-7.
592

Figure 1. Screening and enrollment

Summary of enrollment and retention in RESPOnD. Some patients (n=37) were enrolled after their ERCP but before the 12-month primary outcome assessment. In these cases, the baseline assessment did not include completion of validated instruments characterizing their pain or psychosocial comorbidity. These subjects completed all other baseline and follow-up assessments per protocol.

Figure 2. Development of acute pancreatitis following ERCP for suspected SOD

Time to acute pancreatitis after the index ERCP with sphincterotomy. Episodes which occurred within 30 days of the index or follow-up ERCP are not represented.

Table 1. Patient characteristics

Patient characteristic	Total N=213
Age, Mean (SD)	50.6 (14.9)
Female sex, n (%)	172 (80.8)
Body mass index (kg/m ²), mean (SD)	27.8 (6.4)
Ethnicity, n (%)	
• Hispanic or Latino	10 (4.7)
• Not Hispanic or Latino	203 (95.3)
Race, n (%)	
• White	186 (87.3)
• Black/African American	18 (8.5)
• Other or Multiple	6 (3.8)
• American Indian/Alaska Native	1 (0.5)
• Asian	1 (0.5)
• Native Hawaiian/Other Pacific Islander	1 (0.5)
Smoking history, n (%)	
• Never	120 (56.3)
• Ever	61 (28.6)
• Current	32 (15.0)
Usual intake of alcohol during the past six months (drinks/week), n (%)	
• < 1 drink/week	177 (83.1)
• 2-6 drinks/week	35 (16.4)
• > 6 drinks/week	1 (0.5)
Prior Cholecystectomy, n (%)	169 (79.3)
Relevant past medical history, n (%)	
• Acute pancreatitis	110 (51.6)
• Irritable bowel syndrome ^α	71 (41.8)
• MASLD	42 (19.7)
• Fibromyalgia	30 (14.1)
• Gastroparesis	17 (8.0)
Physician-defined characteristics of SOD, n (%)[†]	
• Bile duct diameter ≥ 12 mm	73/201 (36.3)
• Pancreatic duct diameter ≥ 4 mm	39/121 (32.2)
• Elevated liver chemistry ≥ 2x ULN	91/199 (45.7)
• Elevated pancreatic chemistry ≥ 3x ULN	49/165 (29.7)

IBS = irritable bowel syndrome; SD = standard deviation; MASLD = metabolic dysfunction associated liver disease; ULN = upper limit of normal

^α 170/213 (79.8%) of subjects with data available (i.e., completed the Rome IBS questionnaire)

[†] Denominator for each biochemical and duct variable represents subjects with available data.

Table 2. Pre-procedure pain characteristics, analgesic use, and psychiatric comorbidities

Characteristic	Denominator	
Pain characteristic		
Response to cholecystectomy, n (%)		
• Complete response	161	67/161 (41.6)
• Partial response		36/161 (22.4)
• No response		58/161 (36.0)
Current pain like before cholecystectomy, n (%)		
• Days of pain episodes in past 90 days, median (IQR) (<i>n</i> =169)	162	94/162 (58.0)
• Any abdominal pain in the last 7 days, n (%)	169	143 (84.6)
• Pain intensity (0-10) in past 90 days, median (IQR)	168	7 (6, 9)
• Pain burden (frequency x intensity product) in past 90 days, median (IQR)	168	180 (60, 495)
• Neuropathic pain, n (%)	167	32 (19.2)
• Nociceptive pain, n (%)	168	112 (66.7)
Psychosocial characteristic		
• High likelihood of depression [*] , n (%)	167	21 (12.6)
• High likelihood of anxiety ^ψ , n (%)	167	35 (21.0)
• High likelihood of somatization, n (%)	167	76 (45.5)
• Low physical health [†] , n (%)	165	60 (36.4)
• Low mental health [‡] , n (%)	165	52 (31.5)
Medication use in the 30 days prior to ERCP		
• Opioid, n (%)	171	62 (36.3)
• NSAIDs, n (%)	171	74 (43.3)
• Antispasmodics, n (%)	171	48 (28.1)
• Neuromodulators, n (%)	171	83 (48.5)

^{*} High likelihood of depression defined by a BSI-18 Depression T score ≥ 65

^ψ High likelihood of anxiety defined by BSI-18 Anxiety T score ≥ 65

[†] Low physical health defined as a PROMIS-29 Physical Health Summary T score ≤ 40

[‡] Low mental health defined as a PROMIS-29 Mental Health Summary T score ≤ 4

Table 3. Physician defined characteristics of SOD and response to ERCP treatment

	Physician-defined characteristic		Denominator	Success, n (%) [‡]	p-value
SOD Subtype	Biliary SOD alone <ul style="list-style-type: none"> • Elevated liver chemistry > 2x ULN • Bile duct diameter ≥ 12 mm 	Both (type I)	19	9.8 (51.3)	0.4152
		Either (type II)	54	27.9 (51.6)	
		Neither (type III)	25	13.4 (53.6)	
	Pancreatic SOD alone	59	33.1 (56.1)		
	Mixed type[†]	55	37.1 (67.5)		
Any history of acute pancreatitis	No	103	55.4 (53.8)	0.3560	
	Yes	110	66.8 (60.7)		
Elevated liver chemistry > 2x ULN	No	108	60.6 (56.1)	0.5627	
	Yes	91	55.0 (60.4)		
Bile duct diameter ≥ 12mm	No	128	73.7 (57.6)	0.8062	
	Yes	73	41.5 (56.8)		
SOD = Sphincter of Oddi Disorder; ULN = upper limit of normal [†] Patients having characteristics of biliary type I or II and pancreatic SOD (acute pancreatitis history with or without elevated pancreas chemistry > 3x ULN) [‡] These data represent a composite of 20 imputed datasets, resulting in a reported “n” that is the average of the primary outcome.					

Table 4. Relationship between patient characteristics and response to ERCP (odds ratio)

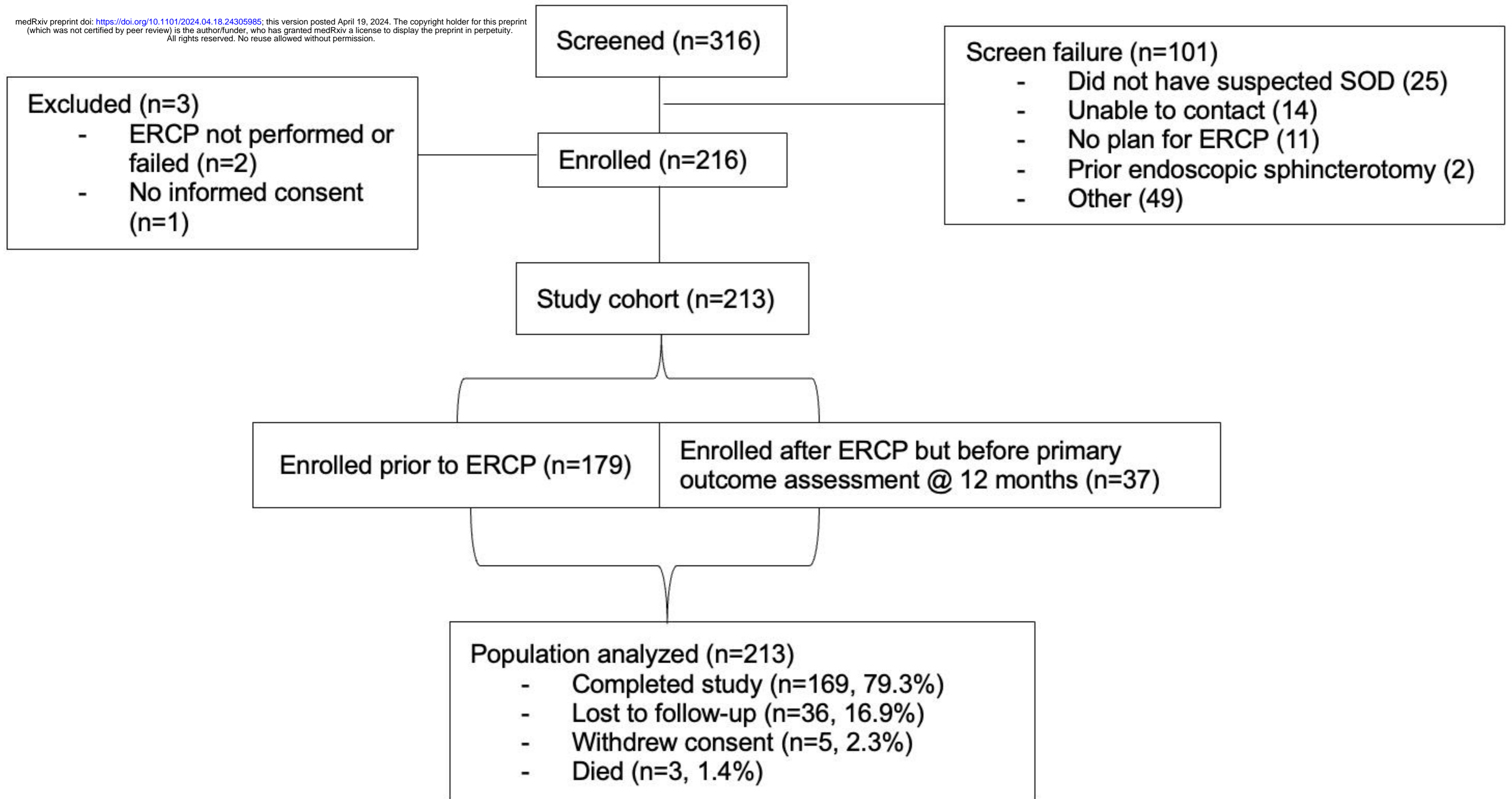
Patient Characteristic		Denominator	Primary Outcome Success, n (%)	p-value
Age, median (IQR)		213	48.9 (39.8 - 60)	0.6570
Sex at birth	Female	172	99.3 (57.7)	0.6735
	Male	41	22.9 (55.9)	
Smoking history	Current Smoker	32	14.6 (45.6)	0.3516
	Never Smoked	120	71.3 (59.4)	
	Past Smoker	61	36.4 (59.6)	
Prescription opioid use in last 30 days	No	109	72.8 (66.7)	0.0276
	Yes	62	30.2 (48.7)	
High likelihood of depression	No	146	91.7 (62.8)	0.1230
	Yes	21	9.3 (44.3)	
High likelihood of anxiety	No	132	82.1 (62.2)	0.4118
	Yes	35	18.9 (53.9)	
High likelihood of somatization	No	91	61 (67)	0.0750
	Yes	76	40 (52.6)	
Low physical health	No	105	69.6 (66.2)	0.0512
	Yes	60	30 (50)	
Low mental health	No	113	72.5 (64.1)	0.1565
	Yes	52	27.1 (52.1)	
Neuropathic pain	No	135	83.4 (61.8)	0.4980
	Yes	32	17.6 (54.8)	
Nociceptive pain	No	56	35.7 (63.8)	0.4984

Patient Characteristic		Denominator	Primary Outcome Success, n (%)	p-value
Gastroparesis	Yes	112	65.3 (58.3)	0.6814
	No	196	113.2 (57.8)	
MASLD	Yes	17	9 (52.9)	0.4359
	No	171	95.8 (56)	
Irritable Bowel Syndrome	No	99	64.9 (65.5)	0.1384
	Yes	71	38.1 (53.7)	

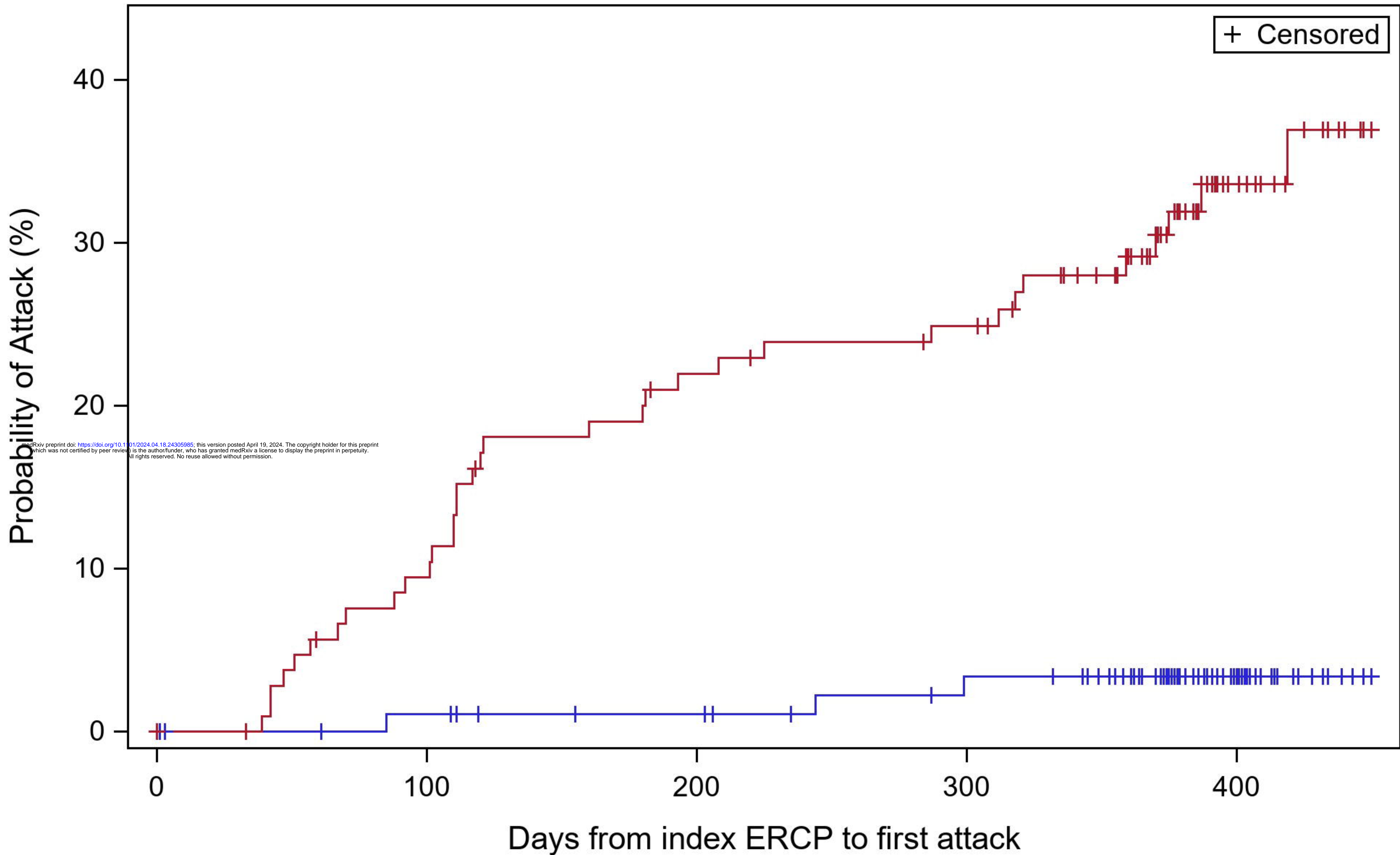
High likelihood of depression defined by BSI-18 Depression T score ≥ 65 ; High likelihood of anxiety defined by BSI-18 Anxiety T score ≥ 65 ; High likelihood of somatization defined by BSI-18 Somatization T score ≥ 65 ; Low physical and mental health defined by respective PROMIS-29 Summary T score ≤ 40 . Statistics were calculated for each of the multiple imputed datasets and combined using SAS PROC MIANALYZE to obtain the single statistic presented in these tables.

Table 5. Factors associated with response to ERCP

Parameter	Univariate odds ratio (95% CI)	Univariate p value	Multivariate odds ratio (95% CI)	Multivariate p value
Physician-defined characteristics of SOD model				
Dilated bile duct \geq 12 mm	0.97 (0.53, 1.78)	0.9229	1.18 (0.60, 2.30)	0.6299
Elevated liver chemistry > 2x ULN	1.19 (0.65, 2.19)	0.5688	1.21 (0.64, 2.29)	0.5499
History of acute pancreatitis	1.33 (0.74, 2.4)	0.3459	1.38 (0.71, 2.69)	0.3428
Baseline patient characteristics model				
Prescription opioid use within 30 days of ERCP	0.47 (0.24, 0.93)	0.0304	0.53 (0.26, 1.08)	0.0810
High likelihood of somatization	0.54 (0.28, 1.07)	0.0787	0.70 (0.33, 1.47)	0.3432
Low physical health	0.51 (0.26, 1.01)	0.0549	0.64 (0.30, 1.37)	0.2500



Acute Pancreatitis >30 days after an ERCP



History of Acute Pancreatitis — No — Yes

No	103	95	93	89	88	84	82	77	36	13
Yes	110	102	95	85	80	77	75	65	28	9