

1
2
3
4
5
6
7
8
9
10
11
12
13
14
15
16
17
18
19
20
21
22
23
24
25

Antiretroviral therapy retention, adherence, and clinical outcomes
among postpartum women with HIV in Nigeria

Clara M. Young^{1,#a}, Charlotte A. Chang², Atiene S. Sagay³, Godwin Imade³, Olabanjo O. Ogunsola⁴, Prosper Okonkwo⁴, Phyllis J. Kanki^{2*}

¹ College of Public Health, The University of Iowa, Iowa City, Iowa, United States of America

² Department of Immunology and Infectious Diseases, Harvard T.H. Chan School of Public Health, Boston, Massachusetts, United States of America

³ Jos University Teaching Hospital, University of Jos, Jos, Nigeria

⁴ APIN Public Health Initiatives, Abuja, Nigeria

^{#a}Current Address: University of California San Diego, San Diego, California, United States of America

Short title: Clinical outcomes among postpartum women with HIV

* Corresponding author: Phyllis J. Kanki

E-mail: pkanki@hsph.harvard.edu (PK)

1 **Abstract**

2 While research involving pregnant women with HIV has largely focused on the antepartum
3 and intrapartum periods, few studies in Nigeria have examined the clinical outcomes of these
4 women postpartum. This study aimed to evaluate antiretroviral therapy retention, adherence, and
5 viral suppression among postpartum women in Nigeria. This retrospective clinical data analysis
6 included women with a delivery record at the antenatal HIV clinic at Jos University Teaching
7 Hospital between 2013 and 2017. Descriptive statistics quantified proportions retained, adherent
8 ($\geq 95\%$ medication possession ratio), and virally suppressed up to 24 months postpartum. Among
9 1535 included women, 1497 met the triple antiretroviral therapy eligibility criteria. At 24 months,
10 1342 (89.6%) women remained in care, 51 (3.4%) reported transferring, and 104 (7.0%) were lost
11 to follow-up. The proportion of patients with $\geq 95\%$ medication possession ratio decreased from
12 79.0% to 69.1% over the 24 months. Viral suppression among those with results was 88.7% at 24
13 months, but $< 62\%$ of those retained had viral load results at each time point. In multiple logistic
14 regression, predictors of loss to follow-up included having a more recent HIV diagnosis, higher
15 gravidity, fewer antenatal care visits, and a non-hospital delivery. Predictors of viral non-
16 suppression included poorer adherence, unsuppressed/missing baseline viral load, lower baseline
17 CD4+ T-cell count, and higher gravidity. Loss to follow-up rates were lower and antiretroviral
18 therapy adherence rates similar among postpartum women at our study hospital compared with
19 other sub-Saharan countries. Longer follow-up time and inclusion of multiple facilities for a
20 nationally representative sample would be beneficial in future studies.

21 **Introduction**

22 Since the human immunodeficiency virus (HIV) epidemic's peak in 1995, new infections
23 have decreased by 59% to 1.3 million in 2022 [1]. This wane can be widely attributed to the
24 accessibility and evolution of antiretroviral therapy (ART), which has positively shifted patient
25 prognosis and decreased transmission risk. Nonetheless, HIV persists as a leading cause of death
26 in low-income countries—remaining a global health priority [2].

27
28 Disproportionately affected by the disease, sub-Saharan Africa constituted 60% of global
29 HIV infections in 2020 [3]. Within the central-west subregion, Nigeria bears the greatest disease
30 burden, ranking fourth in the world [4]. The prioritization of HIV programming in the country has
31 resulted in attenuated incidence and HIV-related morbidity and mortality; however challenges
32 persist [5]. New infections continue to be fueled through mother-to-child transmission (MTCT)
33 during gestation, delivery, and breastfeeding, with 21,000 newly infected children in Nigeria in
34 2020 [3]. ART coverage among pregnant and breastfeeding women with HIV in Nigeria was
35 estimated at 44%, with a 25% vertical transmission rate in 2020 [3].

36
37 While MTCT research has historically centered on ART uptake and viral suppression
38 among pregnant women with HIV through delivery and diagnostic outcomes among their neonates
39 after delivery, less coverage has been given to ART continuation and clinical outcomes among
40 these women postpartum [6]. Postnatal continuation of maternal ART can reduce MTCT rates to
41 less than 2% in resource-limited countries [7–9]. However, ART adherence declines dramatically
42 in mothers with HIV up to 18 months postpartum [10], and new mothers have increased risks of
43 becoming lost to follow-up (LTFU) in HIV care and having viremia, increasing risk of
44 transmission to infants [11,12]. Suboptimal adherence or discontinuation of ART endangers

45 maternal health, even increasing the odds of death [13,14]; with mothers often the primary familial
46 caregivers, poor maternal health, in turn, endangers their children's health.

47
48 To achieve the United Nations Programme on HIV/AIDS (UNAIDS) 95-95-95 goals for
49 the year 2030—that 95% of those living with HIV know their status, have ART, and be virally
50 suppressed—it is crucial to assess ART retention, adherence, and viral suppression among all key
51 populations, including postnatal women [15,16]. We retrospectively measured postpartum
52 retention, ART adherence, and viral suppression in an HIV care program in Nigeria. We
53 additionally identified demographic and clinical risk factors for postpartum LTFU and
54 unsuppressed viral load.

55

56

57 **Materials and methods**

58 **Patient population**

59 The study population included 1535 HIV-1-positive pregnant women ≥ 18 years of age
60 attending the antenatal HIV clinic at Jos University Teaching Hospital (JUTH), north-central
61 Nigeria, with a recorded delivery between 2013 and 2017. Demographic and clinical data were
62 extracted from the clinical databases at enrollment in the HIV program, ART initiation, antenatal
63 booking, delivery, and up to 24 months after delivery, with data censored on 31 December 2019.
64 The data were collected for routine clinical management as part of the APIN Public Health
65 Initiatives HIV program at JUTH, supported by the President's Emergency Plan for AIDS Relief
66 (PEPFAR).

67

68 Per routine care, patients enrolled in the adult HIV clinic at JUTH had scheduled medical
69 examinations with CD4+ T-cell counts every six months, and viral load enumeration every 12
70 months (with enhanced adherence counseling and additional viral load monitoring if viremic). If
71 a patient with HIV became pregnant or a pregnant woman newly tested HIV-positive, they were
72 enrolled in the antenatal HIV clinic at JUTH. After delivery, they transferred back to the general
73 adult HIV clinic for routine HIV care. If a woman receiving antenatal HIV care at JUTH
74 delivered outside of JUTH, their delivery information was recorded when they returned to the
75 clinic with their newborn. All clinical, laboratory, and pharmacy data collected in medical record
76 forms at the adult and antenatal HIV clinics were routinely entered into electronic databases.

77
78 ART eligibility conformed to the Nigerian National Guidelines for HIV Prevention and
79 Care, which were revised over the study years [17–19]. Between 2013 and 2014, all adults with
80 WHO clinical stage III or IV or CD4+ T-cell counts less than 350 cells/mm³ were triple ART-
81 eligible. Ineligible pregnant women received zidovudine and lamivudine during pregnancy with
82 single-dose nevirapine at delivery as prophylaxis. In 2014, Nigerian ART eligibility guidelines
83 were revised to include adults with CD4+ T-cell counts less than 500 cells/mm³; to allow for
84 program implementation delays, we considered women meeting these criteria ART-eligible
85 starting 1 January 2015. In 2016, Nigeria expanded eligibility to all pregnant women with HIV
86 per the WHO Option B+ guideline; to allow time for implementation, we considered all women
87 ART-eligible by 1 January 2017.

88
89 This project was approved by the APIN Public Health Initiatives and Harvard T.H. Chan School
90 of Public Health Institutional Review Boards. Data used were from patients who provided
91 written informed consent for the use of their data for secondary research at the time of

92 enrollment in the HIV program. The clinical records, which included identifiable information,
93 were accessed on June 17, 2020 by the data manager, who assembled the dataset and removed all
94 identifiers before statistical analyses.

95

96 **Measurement and definitions of outcomes**

97 **ART adherence**

98 ART adherence was measured using pharmacy refill data [20]. Medication possession
99 ratios (MPR) were calculated as the percentage of all days supplied with ART over the total days
100 in each 6-month postpartum time interval, and were categorized as <80%, 80%-94.9%, and \geq 95%.
101 New patients picked up ART monthly during their first year; if adherent and virally suppressed,
102 they could pick up a two-month supply bimonthly. Patients were excluded from the adherence
103 analysis if they were receiving ART prophylactically. Patients who became LTFU during the study
104 period were included in the analysis up to the time interval during which their last clinic visit was
105 recorded.

106

107 **Loss to follow-up**

108 While LTFU definitions vary by program and over the years, overlapping with current
109 definitions of interruption in treatment, we defined LTFU conservatively as a sustained absence of
110 \geq 180 days since the last clinical and pharmacy visits, assessed at 24 months postpartum [21].
111 Patients who were ART-ineligible or reported transferring to alternate clinics during the analyzed
112 period were removed from evaluation of this outcome.

113

114 **Unsuppressed viral load**

115 Following program cut-offs, an unsuppressed viral load was defined as a viral load
116 measurement of ≥ 1000 viral copies/mL. Since laboratory tests were not always performed
117 precisely at the study time points, we used the viral load results within the following timeframes
118 that were closest to baseline, month 12, and month 24: 6 months before delivery to 15 days
119 postpartum, 6-18 months postpartum, and 18-30 months postpartum, respectively.

120

121 **Independent variables**

122 Baseline age, HIV clinical (prior years of ART, years since HIV diagnosis, delivery year,
123 ART regimen, viral load, CD4+ T-cell count, and ART adherence between 0-6 months
124 postpartum), and antenatal (surviving children, gestational age at antenatal booking, total antenatal
125 visits, delivery site, delivery year, delivery type, term delivery, infant birthweight, and infant
126 feeding method) factors were evaluated for associations with outcomes, with baseline defined as
127 at or closest to the time of delivery. Other demographic information (marital status, education, and
128 occupation) and previous ART experience were only collected in the ART enrollment record,
129 which was completed whenever the patient initiated ART in the PEPFAR program.

130

131 **Statistical analysis**

132 Continuous variables were converted to ordinal by interquartile range (IQR) and clinical
133 categories. Retention, ART adherence, and viral suppression were measured using simple
134 descriptive statistics. Bivariate analyses were performed to identify potential associations between
135 the independent variables and the following outcomes: LTFU and unsuppressed viral load.

136 Exposure variables with a chi-square p-value <0.2 (or Fisher’s exact for frequencies ≤ 5) were
137 evaluated in a multiple logistic regression model and retained in the final model if $p \leq 0.05$, after
138 backwards elimination. To account for significant missing viral load data, missing baseline viral
139 load results were coded as a separate category, and a sensitivity analysis was performed to compare
140 those with versus those missing postpartum viral load results using bivariate analyses and multiple
141 logistic regression as above. Analysis was conducted with SAS Studio 2020.1.2.

142

143 **Results**

144 **Patient population characteristics**

145 1535 women with delivery records at the JUTH antenatal HIV clinic were included in the
146 analyses (Table 1). The median age at delivery was 33 years (IQR: 29-36). The majority of women
147 were married (66.8%), achieved primary or secondary education (61.7%), held non-income
148 generating occupations (46.2%), and lacked previous ART experience (88.7%) at the time of ART
149 enrollment in the PEPFAR HIV program. Most women were ART-eligible (90.6%) at the time of
150 delivery. The median time since HIV diagnosis was 6.3 years (IQR: 3.3-8.4) and the median
151 duration on ART was 5.6 years (IQR: 2.9-8.1). Most patients (91.1%) were receiving an ART
152 regimen without a protease inhibitor at delivery. At delivery, the majority of patients (87.2%) had
153 ≥ 200 CD4+ T-cells/mm³ and 51.9% of patients were virally suppressed, with 38.6% of patients
154 missing a viral load result.

155

156 **Table 1. Baseline Characteristics of Study Population**

Demographic	Number	%
Age at Delivery	Missing Data	1

	≤29 years	395	25.75
	30-33 years	458	29.86
	34-36 years	326	21.25
	≥37 years	355	23.14
Marital Status ^a	Missing Data	39	.
	Single/Separated/Divorced	496	33.16
	Married	1000	66.84
Education Status ^a	Missing Data	42	.
	No Formal	130	8.71
	Primary/Secondary	921	61.69
	Tertiary	442	29.6
Occupation Status ^a	Missing Data	45	.
	Non-income Generating	688	46.17
	Professional/Manager	356	23.89
	Labor/Service	446	29.93
Clinical HIV/ART^b		Number	%
Previous ART Experience ^a	Missing Data	39	.
	ART Naive	1327	88.7
	ART Experienced	169	11.3
Time since HIV Diagnosis	Missing Data	55	.
	Diagnosis during Pregnancy/Delivery	144	9.73
	≤3 years Prepartum	198	13.38
	3.1-6 years Prepartum	367	24.8
	6.1-8 years Prepartum	337	22.77
	>8 years Prepartum	434	29.32
Duration on ART prior to Delivery	Missing Data	95	.
	<4 years	487	33.82
	4-8 years	586	40.69
	>8 years	367	25.49
Drug Regimen at Delivery	Missing Data	30	.
	Regimens without a Protease Inhibitor	1371	91.1
	Regimens with a Protease Inhibitor	134	8.9
Viral Load at Delivery	Missing Data	592	38.57
	Suppressed (<1000 copies/mL)	797	51.92
	Unsuppressed (≥1000 copies/mL)	146	9.51
CD4 Cell Count at Delivery	Missing Data	147	.
	<200 cells/mm ³	178	12.82
	200-349 cells/mm ³	402	28.96
	350-500 cells/mm ³	421	30.33

	>500 cells/mm ³	387	27.88
Antenatal		Number	%
Plurality	Missing Data	175	.
	1	1338	98.38
	2-3	22	1.62
Gravidity	Missing Data	95	.
	1	96	6.67
	2-3	523	36.32
	≥4	821	57.01
Previous Live Births	Missing Data	147	.
	0	198	14.27
	1	301	21.69
	≥2	889	64.05
Surviving Children	Missing Data	149	.
	0	239	17.24
	1-2	725	52.31
	>2	422	30.45
Previous Abortion	Missing Data	198	.
	0	797	59.61
	≥1	540	40.39
Trimester at First Antenatal Care Visit	Missing Data	11	.
	1st (≤12 weeks)	113	7.41
	2nd (13-26 weeks)	989	64.9
	3rd (≥27 weeks)	422	27.69
Total Antenatal Care Visits	1-2	329	21.43
	3-4	606	39.48
	>4	600	39.09
Delivery		Number	%
Year of Delivery	2013-2014	745	48.53
	2015-2017	790	51.47
Delivery Site	Missing Data	14	.
	Jos University Teaching Hospital	276	18.15
	Other Clinic/Home/Road	1245	81.85
Delivery Type	Missing Data	108	.
	Vaginal/Assisted	1086	76.1
	Emergency/Elective C-Section	341	23.9
Gestational Age at Delivery	Missing Data	127	.
	Pre-term (<37 weeks)	64	4.55
	Full-term (≥37 weeks)	1344	95.45

Infant Birthweight	Missing Data	132	.
	Low (≤ 2.5 kg)	375	26.73
	Normal/High (> 2.5 kg)	1028	73.27
Infant Feed Method at Delivery	Missing Data	33	.
	Exclusive Breast Feeding	1345	89.55
	Breast Milk Substitute Supplement	157	10.45

157 ^aDenotes variables collected from the ART enrollment record, which was completed when the
 158 patient initiated ART in the APIN PEPFAR program. All other variables collected at antenatal
 159 booking or at delivery, as indicated.

160 ^bART, antiretroviral therapy.

161

162

163 **ART retention**

164 Among 1497 ART-eligible women at delivery, 1342 (89.6%) were retained in care at 24
 165 months postpartum (Fig 1). Cumulatively, 51 (3.4%) women reported transferring to another
 166 clinic, and 104 (7.0%) were LTFU.

167

168 **Fig 1. Study Population Flowchart.**

169 Abbreviations: JUTH, Jos University Teaching Hospital; LTFU, lost to follow-up.

170

171 **ART adherence over time**

172 Among ART-eligible women retained in each period, mean MPR over time was 95.5%
 173 (95% CI 95.0%–96.1%) between 0-6 months, 93.9% (95% CI 93.1%–94.6%) between 6-12
 174 months, 92.0% (95% CI 91.0%–92.9%) between 12-18 months, and 91.0% (95% CI 90.0%–
 175 91.9%) between 18-24 months postpartum. The proportion of postpartum patients with $\geq 95\%$
 176 MPR decreased from 79.0% to 69.1% while the proportion of patients with $< 80\%$ MPR
 177 increased from 7.4% to 15.7% over the study period (Fig 2).

178

179 **Fig 2. Medication Possession Ratio.** The proportion of patients with <80%, 80%-94.9%, and
180 $\geq 95\%$ MPR between 0-6, 6-12, 12-18, and 18-24 months after delivery among ART-eligible
181 patients retained in each period.

182 Abbreviations: MPR, medication possession ratio; n, number of patients retained.

183

184 **Viral load suppression**

185 Among all 1497 ART-eligible patients, 926 (61.9%) had a baseline viral load result, 688
186 (50.0%) had a viral load result at 12 months postpartum, and 858 (57.3%) had a viral load result
187 at 24 months postpartum. Mean viral loads were 26,993 viral copies/mL (95% CI 12,551–
188 41,435) at delivery, 9206 viral copies/mL (95% CI 2107-16,305) at 12 months, and 5796 viral
189 copies/mL (95% CI 3256-8336) at 24 months. Among those with VL results, the proportion of
190 patients with a suppressed viral load was 84.9% (786/926) at delivery, 85.8% (590/688) at 12
191 months, and 88.7% (761/858) at 24 months.

192

193 **Risk factors for LTFU**

194 In chi-square bivariate analysis (Table 2), LTFU was potentially associated with the
195 following variables: maternal age, previous ART experience, years since HIV diagnosis, duration
196 on ART, viral load at delivery, CD4+ T-cell count at delivery, total antenatal care visits, abortion
197 history, gravidity, total surviving children, and delivery site.

198

199 **Table 2. Bivariate Analysis of Loss to Follow Up**

	Retained		Loss to Follow Up		Total	chi-square test
	Number	%	Number	%	Number	p-value
Demographic						
Age at Delivery						
≤29 years	311	88.6%	40	11.4%	351	0.0044
30-33 years	412	93.4%	29	6.6%	441	
34-36 years	298	95.2%	15	4.8%	313	
≥37 years	320	94.1%	20	5.9%	340	
Marital Status ^a						
Single/Separated/Divorced	441	93.2%	32	6.8%	473	0.6998
Married	873	92.7%	69	7.3%	942	
Education Status ^a						
No Formal	107	90.7%	11	9.3%	118	0.3037
Primary/Secondary	808	92.4%	66	7.6%	874	
Tertiary	397	94.3%	24	5.7%	421	
Occupation Status ^a						
Non-income Generating	607	93.0%	46	7.0%	653	0.3927
Professional/Manager	314	94.3%	19	5.7%	333	
Labor/Service	388	91.7%	35	8.3%	423	
Clinical HIV/ART^b						
Previous ART Experience ^a						
ART Naive	1167	92.5%	94	7.5%	1261	0.1856
ART Experienced	147	95.5%	7	4.5%	154	
Time since HIV Diagnosis						
Diagnosis during Pregnancy/Delivery	111	88.1%	15	11.9%	126	0.0215
≤3 years Prepartum	163	90.1%	18	9.9%	181	
3.1-6 years Prepartum	324	92.3%	27	7.7%	351	
6.1-8 years Prepartum	303	93.8%	20	6.2%	323	
>8 years Prepartum	401	95.5%	19	4.5%	420	
Duration on ART prior to Delivery						
<4 years	406	90.0%	45	10.0%	451	0.0052
4-8 years	532	94.0%	34	6.0%	566	
>8 years	340	95.5%	16	4.5%	356	
Drug Regimen at Delivery						
Regimens without a Protease Inhibitor	1226	93.7%	82	6.3%	1308	0.4657

Regimens with a Protease Inhibitor	116	92.1%	10	7.9%	126	
Viral Load at Delivery						
Suppressed (<1000 copies/mL)	724	95.1%	37	4.9%	761	0.0011
Unsuppressed (\geq 1000 copies/mL)	121	91.7%	11	8.3%	132	
Missing Data	497	89.9%	56	10.1%	553	
CD4 Cell Count at Delivery						
<200 cells/mm ³	153	89.0%	19	11.0%	172	0.012
200-349 cells/mm ³	359	93.2%	26	6.8%	385	
350-500 cells/mm ³	386	95.8%	17	4.2%	403	
>500 cells/mm ³	342	95.0%	18	5.0%	360	
Antenatal						
Plurality						
1	1169	92.7%	92	7.3%	1261	1 ^c
2-3	19	95.0%	1	5.0%	20	
Gravidity						
1	83	96.5%	3	3.5%	86	0.0527 ^c
2-3	457	94.4%	27	5.6%	484	
\geq 4	717	91.3%	68	8.7%	785	
Previous Live Births						
0	166	92.2%	14	7.8%	180	0.2881
1	267	95.0%	14	5.0%	281	
\geq 2	779	92.3%	65	7.7%	844	
Surviving Children						
0	201	93.5%	14	6.5%	215	0.1455
1-2	645	93.9%	42	6.1%	687	
>2	364	90.8%	37	9.2%	401	
Previous Abortion						
0	696	93.9%	45	6.1%	741	0.0764
\geq 1	473	91.3%	45	8.7%	518	
Trimester at First Antenatal Care Visit						
1st (\leq 12 weeks)	99	94.3%	6	5.7%	105	0.0705
2nd (13-26 weeks)	872	93.7%	59	6.3%	931	
3rd (\geq 27 weeks)	360	90.2%	39	9.8%	399	
Total Antenatal Care Visits						
1-2	273	88.3%	36	11.7%	309	<.0001
3-4	529	92.0%	46	8.0%	575	
>4	540	96.1%	22	3.9%	562	

Delivery						
Year of Delivery						
2013-2014	637	92.6%	51	7.4%	688	0.7571
2015-2017	705	93.0%	53	7.0%	758	
Delivery Site						
Jos University Teaching Hospital	254	96.6%	9	3.4%	263	0.0122
Other Clinic/Home/Road	1079	92.2%	91	7.8%	1170	
Delivery Type						
Vaginal/Assisted	943	92.1%	81	7.9%	1024	0.0855
Emergency/Elective C-Section	301	95.0%	16	5.0%	317	
Gestational Age at Delivery						
Pre-term (<37 weeks)	57	95.0%	3	5.0%	60	0.7952 ^c
Full-term (≥37 weeks)	1174	92.8%	91	7.2%	1265	
Infant Birthweight						
Low (≤2.5 kg)	320	90.9%	32	9.1%	352	0.0791
Normal/High (>2.5 kg)	908	93.7%	61	6.3%	969	
Infant Feed Method at Delivery						
Exclusive Breast Feeding	1180	93.1%	87	6.9%	1267	0.7975
Breast Milk Substitute Supplement	137	92.6%	11	7.4%	148	

200 ^aDenotes variables collected from the ART enrollment record, which was completed when the
 201 patient initiated ART in the APIN PEPFAR program. All other variables collected at antenatal
 202 booking or at delivery, as indicated.

203 ^bART, antiretroviral therapy.

204 ^cFisher's exact test p-values reported when contingency table observations were less than or
 205 equal to five.

206

207 1303 patients were retained in the final multiple logistic regression model for risk factors
 208 associated with LTFU (Fig 3). A longer time since HIV diagnosis (3.1-6 years, aOR=0.421, 95%
 209 CI 0.202-0.876; 6.1-8 years, aOR=0.347, 95% CI 0.161-0.745; >8 years, aOR=0.231, 95% CI
 210 0.106-0.502) and having attended >4 antenatal care visits (aOR=0.312, 95% CI 0.171-0.568)
 211 significantly decreased risk of becoming LTFU. Alternatively, having gravidity of ≥4
 212 pregnancies (aOR=3.733, 95% CI 1.095-12.73) and delivering outside of JUTH (aOR=2.752,
 213 95% CI 1.166-6.497) significantly increased risk for becoming LTFU.

214

215 **Fig 3. Risk Factors for Postpartum Loss to Follow-Up.** Final multiple logistic regression
 216 model shows significant risk factors for women becoming lost to follow-up from the Jos
 217 University Teaching Hospital HIV clinic after delivery up to 24 months postpartum.
 218 Abbreviations: aOR, adjusted odds ratio; CI, confidence interval; ref, reference group.

219

220 Risk factors for unsuppressed viral load

221 In chi-square bivariate analysis (Table 3), unsuppressed viral load was potentially
 222 associated with the following variables : marital status, education level, occupation, previous
 223 ART experience, delivery site, total antenatal care visits, gestational age at antenatal booking,
 224 previous live births, surviving children, abortion history, drug regimen, and infant feeding
 225 method.

226 **Table 3. Bivariate Analysis of Unsuppressed Viral Load**

	Suppressed Viral Load		Unsuppressed Viral Load		Total Number	chi-square test p-value
	Number	%	Number	%		
Demographic						
Age at Delivery						
≤29 years	189	85.5%	32	14.5%	221	0.4123
30-33 years	263	83.2%	53	16.8%	316	
34-36 years	182	81.6%	41	18.4%	223	
≥37 years	228	86.7%	35	13.3%	263	
Marital Status ^a						
Single/Separated/Divorced	305	86.9%	46	13.1%	351	0.0663
Married	535	82.4%	114	17.6%	649	
Education Status ^a						
No Formal	50	67.6%	24	32.4%	74	0.0002
Primary/Secondary	522	84.9%	93	15.1%	615	

Tertiary	267	86.4%	42	13.6%	309	
Occupation Status ^a						
Non-income Generating	370	81.5%	84	18.5%	454	0.1074
Professional/Manager	217	87.5%	31	12.5%	248	
Labor/Service	249	84.7%	45	15.3%	294	
Clinical HIV/ART^b						
Previous ART Experience ^a						
ART Naive	749	84.7%	135	15.3%	884	0.0828
ART Experienced	91	78.4%	25	21.6%	116	
Time since HIV Diagnosis						
Diagnosis during						
Pregnancy/Delivery	61	83.6%	12	16.4%	73	0.3027
≤3 years Prepartum	104	86.7%	16	13.3%	120	
3.1-6 years Prepartum	199	84.7%	36	15.3%	235	
6.1-8 years Prepartum	169	79.7%	43	20.3%	212	
>8 years Prepartum	305	86.2%	49	13.8%	354	
Duration on ART prior to						
Delivery						
<4 years	243	85.3%	42	14.7%	285	0.2335
4-8 years	310	81.6%	70	18.4%	380	
>8 years	264	86.0%	43	14.0%	307	
Drug Regimen at Delivery						
Regimens without a						
Protease Inhibitor	788	85.2%	137	14.8%	925	0.0143
Regimens with a Protease						
Inhibitor	75	75.8%	24	24.2%	99	
Viral Load at Delivery						
Suppressed (<1000						
copies/mL)	509	91.7%	46	8.3%	555	<.0001
Unsuppressed (≥1000						
copies/mL)	30	39.0%	47	61.0%	77	
Missing Data	324	82.7%	68	17.3%	392	
CD4 Cell Count at Delivery						
<200 cells/mm ³	64	61.0%	41	39.0%	105	<.0001
200-349 cells/mm ³	210	80.5%	51	19.5%	261	
350-500 cells/mm ³	263	88.9%	33	11.1%	296	
>500 cells/mm ³	248	90.8%	25	9.2%	273	
Adherence 0-6 Months						
Postpartum						
<95% Medication						
Possession Ratio	160	76.2%	50	23.8%	210	0.0003

≥95% Medication Possession Ratio	703	86.4%	111	13.6%	814	
Antenatal						
Plurality						
1	735	83.0%	151	17.0%	886	0.4878 ^c
2-3	14	93.3%	1	6.7%	15	
Gravidity						
1	59	89.4%	7	10.6%	66	0.0751
2-3	295	87.0%	44	13.0%	339	
≥4	450	82.1%	98	17.9%	548	
Previous Live Births						
0	121	90.3%	13	9.7%	134	0.0226
1	172	88.2%	23	11.8%	195	
≥2	486	82.4%	104	17.6%	590	
Surviving Children						
0	133	85.8%	22	14.2%	155	0.0232
1-2	417	87.2%	61	12.8%	478	
>2	227	79.9%	57	20.1%	284	
Previous Abortion						
0	436	82.4%	93	17.6%	529	0.0101
≥1	315	88.7%	40	11.3%	355	
Trimester at First Antenatal Care Visit						
1st (≤12 weeks)	67	80.7%	16	19.3%	83	0.0513
2nd (13-26 weeks)	565	86.7%	87	13.3%	652	
3rd (≥27 weeks)	225	80.9%	53	19.1%	278	
Total Antenatal Care Visits						
1-2	176	80.4%	43	19.6%	219	0.1798
3-4	354	85.9%	58	14.1%	412	
>4	333	84.7%	60	15.3%	393	
Delivery						
Year of Delivery						
2013-2014	285	84.1%	54	15.9%	339	0.8984
2015-2017	578	84.4%	107	15.6%	685	
Delivery Site						
Jos University Teaching Hospital	148	80.9%	35	19.1%	183	0.1797
Other Clinic/Home/Road	707	84.9%	126	15.1%	833	
Delivery Type						
Vaginal/Assisted	585	83.7%	114	16.3%	699	0.2351

Emergency/Elective C-Section	206	86.9%	31	13.1%	237	
Gestational Age at Delivery						
Pre-term (<37 weeks)	35	79.5%	9	20.5%	44	0.3832
Full-term (≥37 weeks)	739	84.5%	136	15.5%	875	
Infant Birthweight						
Low (≤2.5 kg)	193	82.8%	40	17.2%	233	0.5975
Normal/High (>2.5 kg)	580	84.3%	108	15.7%	688	
Infant Feed Method at Delivery						
Exclusive Breast Feeding	774	85.3%	133	14.7%	907	0.0069
Breast Milk Substitute Supplement	71	74.7%	24	25.3%	95	

227 ^aDenotes variables collected from the ART enrollment record, which was completed when the
 228 patient initiated ART in the APIN PEPFAR program. All other variables collected at antenatal
 229 booking or at delivery, as indicated.

230 ^bART, antiretroviral therapy.

231 ^cFisher's exact test p-values reported when contingency table observations were less than or
 232 equal to five.

233

234 The final multiple logistic regression model for unsuppressed viral load retained 866
 235 patients (Fig 4). Having ≥95% ART adherence (aOR=0.51, 95% CI 0.319-0.816) and higher
 236 CD4+ T-cell counts at delivery (200-349 cells/mm³, aOR=0.453, 95%CI 0.252-0.814; 350-500
 237 cells/mm³, aOR=0.284, 95% CI 0.152-0.528; >500 cells/mm³, aOR=0.235, 95% CI 0.121-0.456)
 238 were significantly protective against experiencing unsuppressed viral load postpartum.
 239 Significant risk factors for this adverse outcome were having an unsuppressed or missing viral
 240 load at delivery (aOR=13.128, 95% CI 7.147-24.115 and aOR=2.402, 95% CI 1.534-3.761,
 241 respectively) and having gravidity of ≥4 pregnancies (aOR=2.716, 95% CI 1.052-7.015).

242

243 **Fig 4. Risk Factors for Postpartum Unsuppressed Viral Load.** Final multiple logistic

244 regression model shows significant risk factors for viral load non-suppression after delivery up to

245 24 months postpartum. Abbreviations: aOR, adjusted odds ratio; CI, confidence interval; ref,
246 reference group.

247
248 Our sensitivity analysis compared 422 women missing vs. 1024 women not missing
249 postpartum viral load data (Table 4). Maternal age, marital status, time since HIV diagnosis,
250 ART adherence, ART duration, viral load at delivery, CD4+ T-cell count at delivery, delivery
251 year, and delivery type were potentially associated with missing data in bivariate analyses. The
252 final multiple logistic regression model indicated that missing postpartum viral load data had
253 significant inverse associations with having been on ART >8 years, $\geq 95\%$ MPR, and delivery
254 year after 2014.

255

256 **Table 4. Sensitivity Analysis – Patients with Postpartum Viral Load Data vs. Patients**
257 **Missing Data**

	Viral Load Recorded	Viral Load Missing	chi-square test	Multiple Logistic Regression	
	Number (%)	Number (%)	p-value	aOR^a (95% CI^b)	p-value
Demographic					
Age at Delivery					
≤29 years	221 (63.0%)	130 (37.0%)	0.0005		
30-33 years	316 (71.7%)	125 (28.3%)			
34-36 years	223 (71.2%)	90 (28.8%)			
≥37 years	263 (77.4%)	77 (22.6%)			
Marital Status ^c					
Single/Separated/Divorced	351 (74.2%)	122 (25.8%)	0.0384		
Married	649 (68.9%)	293 (31.1%)			
Education Status ^c					
No Formal	74 (62.7%)	44 (37.3%)	0.0762		
Primary/Secondary	615 (70.4%)	259 (29.6%)			
Tertiary	309 (73.4%)	112 (26.6%)			
Occupation Status ^c					
Non-income Generating	454 (69.5%)	199 (30.5%)	0.2213		

Professional/Manager	248 (74.5%)	85 (25.5%)			
Labor/Service	294 (69.5%)	129 (30.5%)			
Clinical HIV/ART^d					
Previous ART Experience ^c					
ART Naive	884 (70.1%)	377 (29.9%)	0.1791		
ART Experienced	116 (75.3%)	38 (24.7%)			
Time since HIV Diagnosis					
Diagnosis during Pregnancy/Delivery	73 (57.9%)	53 (42.1%)	<.0001		
≤3 years Prepartum	120 (66.3%)	61 (33.7%)			
3.1-6 years Prepartum	235 (67.0%)	116 (33.0%)			
6.1-8 years Prepartum	212 (65.6%)	111 (34.4%)			
>8 years Prepartum	354 (84.3%)	66 (15.7%)			
Duration on ART prior to Delivery					
<4 years	285 (63.2%)	166 (36.8%)	<.0001	Ref ^e	Ref
4-8 years	380 (67.1%)	186 (32.9%)		0.88 (0.66-1.18)	0.3935
>8 years	307 (86.2%)	49 (13.8%)		0.47 (0.32-0.70)	0.0002
Drug Regimen at Delivery					
Regimens without a Protease Inhibitor	925 (70.7%)	383 (29.3%)	0.0624		
Regimens with a Protease Inhibitor	99 (78.6%)	27 (21.4%)			
Viral Load at Delivery					
Suppressed (<1000 copies/mL)	555 (72.9%)	206 (27.1%)	0.0030		
Unsuppressed (≥1000 copies/mL)	77 (58.3%)	55 (41.7%)			
Missing Data	392 (70.9%)	161 (29.1%)			
CD4 Cell Count at Delivery					
<200 cells/mm ³	105 (61.0%)	67 (39.0%)	0.0015		
200-349 cells/mm ³	261 (67.8%)	124 (32.2%)			
350-500 cells/mm ³	296 (73.4%)	107 (26.6%)			
>500 cells/mm ³	273 (75.8%)	87 (24.2%)			
Adherence 0-6 Months Postpartum					
<95% Medication Possession Ratio	210 (64.2%)	117 (35.8%)	0.0023	Ref	Ref
≥95% Medication Possession Ratio	814 (72.9%)	302 (27.1%)		0.40 (0.28-0.56)	<0.001
Antenatal					
Plurality					

1	886 (70.3%)	375 (29.7%)	0.8069 ^f		
2-3	15 (75.0%)	5 (25.0%)			
Gravidity					
1	66 (76.7%)	20 (23.3%)	0.4031		
2-3	339 (70.0%)	145 (30.0%)			
≥4	548 (69.8%)	237 (30.2%)			
Previous Live Births					
0	134 (74.4%)	46 (25.6%)	0.4385		
1	195 (69.4%)	86 (30.6%)			
≥2	590 (69.9%)	254 (30.1%)			
Surviving Children					
0	155 (72.1%)	60 (27.9%)	0.7587		
1-2	478 (69.6%)	209 (30.4%)			
>2	284 (70.8%)	117 (29.2%)			
Previous Abortion					
0	529 (71.4%)	212 (28.6%)	0.2753		
≥1	355 (68.5%)	163 (31.5%)			
Trimester at First Antenatal Care Visit					
1st (≤12 weeks)	83 (79.0%)	22 (21.0%)	0.1409		
2nd (13-26 weeks)	652 (70.0%)	279 (30.0%)			
3rd (≥27 weeks)	278 (69.7%)	121 (30.3%)			
Total Antenatal Care Visits					
1-2	219 (70.9%)	90 (29.1%)	0.815		
3-4	412 (71.7%)	163 (28.3%)			
>4	393 (69.9%)	169 (30.1%)			
Delivery					
Year of Delivery					
2013-2014	339 (49.3%)	349 (50.7%)	<.0001	Ref	Ref
2015-2017	685 (90.4%)	73 (9.6%)		0.10 (0.07-0.13)	<0.001
Delivery Site					
Jos University Teaching Hospital	183 (69.6%)	80 (30.4%)	0.6024		
Other Clinic/Home/Road	833 (71.2%)	337 (28.8%)			
Delivery Type					
Vaginal/Assisted	699 (68.3%)	325 (31.7%)	0.0276		
Emergency/Elective C-Section	237 (74.8%)	80 (25.2%)			
Gestational Age at Delivery					
Pre-term (<37 weeks)	44 (73.3%)	16 (26.7%)	0.4943		
Full-term (≥37 weeks)	875 (69.2%)	390 (30.8%)			

Infant Birthweight

Low (≤ 2.5 kg)	233 (66.2%)	119 (33.8%)	0.0927
Normal/High (> 2.5 kg)	688 (71.0%)	281 (29.0%)	

Infant Feed Method at Delivery

Exclusive Breast Feeding	907 (71.6%)	360 (28.4%)	0.0611
Breast Milk Substitute Supplement	95 (64.2%)	53 (35.8%)	

258 ^aaOR, adjusted odds ratio.

259 ^bCI, confidence interval.

260 ^cDenotes variables collected from the ART enrollment record, which was completed when the
261 patient initiated ART in the APIN PEPFAR program. All other variables collected at antenatal
262 booking or at delivery, as indicated.

263 ^dART, antiretroviral therapy.

264 ^eref, reference category.

265 ^fFisher's exact test p-values reported when contingency table observations were less than or
266 equal to five.

267

268 Discussion

269 To our knowledge, this retrospective analysis is the first to quantify both ART adherence
270 and viral suppression up to 24 months postpartum and identify risk factors for LTFU and
271 unsuppressed viral load in postpartum women with HIV in Nigeria.

272

273 In this study, 69.1% of patients had $\geq 95\%$ MPR by 24 months postpartum—a proportion
274 comparable to numbers observed in other sub-Saharan countries. Studies in Malawi using
275 prescription pick-up data and South Africa and Zambia using self-reported adherence found 67%,
276 63.9%, and 70.5% of postpartum women with optimal adherence, respectively [22–24].
277 Definitions for optimal adherence varied slightly between 90% in the Malawi study and 100% in
278 the South Africa and Zambia studies. We found a lower proportion of adherent postpartum women
279 than a study in Abuja, Nigeria which found 82.9% adherent women using pill count [25].

280

281 Lower adherence rates in postpartum women compared with pregnant women with HIV
282 have been documented [26]. We found a downward trend in ART adherence over the 24 months
283 postpartum, from 79.0% of women with $\geq 95\%$ MPR between months 0-6 to 69.1% of women with
284 $\geq 95\%$ MPR between months 18-24 postpartum. This postpartum decline again mimics the
285 longitudinal trends of other sub-Saharan countries and identifies a crucial time period for
286 intervention [10,23,24,27].

287
288 The cumulative percentage of patients LTFU at 24 months postpartum in this study was
289 6.9%. This proportion is significantly lower than rates in other sub-Saharan countries such as
290 Ethiopia and Malawi, where LTFU has ranged from 23%-24.5% [23,24,28]. The proportion LTFU
291 in the general adult population with HIV in Nigeria has likewise been reported to be much higher,
292 at 28% [29]. The focus on MTCT prevention at JUTH, through the APIN Public Health Initiatives,
293 may have contributed to this improved retention among postpartum patients. Postpartum women
294 with HIV may also be more motivated to continue ART (despite the difficulty in maintaining
295 optimal adherence) during the first 24 months postpartum, while their infants are still being
296 monitored for HIV infection; because our data were censored at 24 months, we could not assess
297 outcomes afterward.

298
299 This study established risk factors for postpartum women becoming LTFU, previously
300 unidentified in this patient population. Past studies have identified demographic determinants (i.e.,
301 younger age) and clinical determinants (i.e., viremia and missing CD4+ T-cell counts at delivery)
302 as risk factors for pregnant women becoming LTFU after birth [30,31]. Our study found the most
303 significant risk factors for LTFU among postpartum patients were related to a patient's

304 engagement and amount of contact time with the HIV clinic and antenatal care before delivery.
305 Having a more recent HIV diagnosis, fewer antenatal care visits, and a delivery outside of JUTH
306 increased the risk of LTFU. Higher gravidity also increased the risk of LTFU; women with prior
307 pregnancies likely have children to care for at home, and less time to care for their own health.
308 Strategies for retaining the postpartum population in HIV care should, therefore, identify and
309 engage these high-risk patients with enhanced adherence counseling during pregnancy and in the
310 first postpartum year. While costly, studies indicate that patient tracing and repeated home visits
311 are successful methods for reconnecting with patients after becoming LTFU [32,33].

312
313 Our study found 85.8% viral suppression at month 12 and 88.7% viral suppression at month
314 24 postpartum among those with viral load results. These numbers fall short of the 95% UNAIDS
315 target for viral suppression. In comparison, South African studies found 14.7%–14.8% postpartum
316 viral non-suppression [34,35]. Importantly, in our study, of the 1497 ART-eligible, only 50.0%
317 had viral load results at month 12, and 57.3% had viral load results at month 24. Viral load
318 monitoring is a challenge in many resource-limited settings. A South African study found only
319 12.6% of women had a viral load test by 9 months postpartum [34]. In our sensitivity analysis,
320 patients missing postpartum viral load results were more likely to have shorter duration on ART
321 and poorer adherence; therefore, our viral suppression rates in the postpartum population are likely
322 overestimates. This may also explain why the proportion of patients with viral suppression did not
323 decrease over the 24 months despite declining adherence. The 2018 Nigerian HIV/AIDS Indicator
324 and Impact Survey found 77.1% viral suppression among adults on ART, which may be closer to
325 what we might have observed in our study if viral load results were not missing [36].

326

327 Previous studies have identified younger age, shorter ART duration, and unsuppressed viral
328 load at delivery as risk factors for unsuppressed viral load postpartum [12,37,38]. Our study
329 similarly found unsuppressed viral load at delivery as a predictor of unsuppressed postpartum viral
330 load; as unsuppressed viral load may indicate drug resistance, closer monitoring of these patients
331 is needed. We additionally identified having poorer adherence, lower baseline CD4+ T-cell count,
332 and more prior pregnancies as risk factors for unsuppressed postpartum viral load. Higher gravidity
333 was a significant risk factor for both LTFU and unsuppressed viral load, and women with more
334 children at home should be targeted for enhanced adherence counseling and supportive services.

335

336 While our study confirmed gaps in postpartum retention and adherence, solutions are not
337 straightforward. Results of trials implementing phone calls or text message reminders to improve
338 postpartum retention have been mixed [39–41]. Integrated care where mothers and infants are seen
339 together at the PMTCT clinic postpartum has shown some promise. One study found 90% median
340 ART adherence postpartum with 91% viral suppression in Uganda, where care was integrated,
341 compared with 40% adherence postpartum with 57% viral suppression in South Africa, where
342 women transferred to general ART services immediately after delivery [42]. A clinical trial found
343 that integration of postpartum maternal and infant HIV care improved both retention and viral
344 suppression at 12 months postpartum, but benefits did not continue after transfer to general ART
345 services [43,44]. Trials implementing ‘mentor mothers’ and community-based ‘adherence clubs’
346 have demonstrated improvements in viral suppression up to 24 months postpartum [45,46].

347

348 While the large study population size and 24-month duration of individual postpartum
349 follow-up strengthened this study, limitations remained. Our major limitation was missing data,
350 with around 40% of viral load results missing at delivery and month 24, and 50% at month 12.

351 Although viral load is the gold standard measure of ART effectiveness, it was not performed
352 following the 12-monthly schedule. To accommodate for missing viral load data, missing baseline
353 values were categorized separately and postpartum viral load time points were combined for the
354 analyses, and a sensitivity analysis was performed to compare those with and without postpartum
355 viral load results. Additionally, while MPR was used as a proxy measurement for ART adherence,
356 without direct observation, it is possible that some patients picked up medication but did not adhere
357 to their prescribed regimen. This study also exclusively focused on JUTH, a large urban tertiary
358 hospital with an established HIV clinic since 2004, which may not be representative of Nigeria.

359
360 Finally, the impact of this study is limited by a lack of qualitative data. In addition to
361 demographic and clinical barriers to ART retention and adherence like the ones we identified,
362 significant individual (i.e., depression, understanding of ART), sociocultural (i.e., stigma, non-
363 disclosure of HIV status), economic (i.e., financial resources, transportation), and structural (i.e.,
364 health worker attitudes) barriers persist for many people living with HIV in Nigeria and globally
365 [25,47–49]. Solutions to these long-standing barriers are elusive, as a Nigerian study that attempted
366 a “continuous quality improvement” intervention found.[50] But so long as these barriers exist,
367 any interventions may prove ultimately ineffective.

368

369 **Conclusions**

370 As the risks for MTCT and adverse maternal health outcomes remain after birth, evaluation
371 of retention, ART adherence, and viral suppression among postpartum mothers is critical. The
372 cumulative percent of patients LTFU two years postpartum was lower for this Nigerian study
373 population compared with postpartum patients in other sub-Saharan countries. As engagement

374 with HIV and antenatal care decreases the risk of becoming LTFU, efforts to increase contact time
375 among higher-risk patients should be initiated early in pregnancy. ART adherence among our
376 postpartum population correlates with adherence rates in other sub-Saharan countries. The decline
377 in adherence over the 24 months postpartum highlights the critical need for innovative adherence
378 intervention strategies during this period. Viral suppression was considerably lower than the 95%
379 UNAIDS target, and, importantly, the large percentage of missing viral load results was
380 concerning. The causes of low viral load testing, whether policy-, funding-, and/or program-related
381 must be addressed; point-of-care viral load monitoring should be considered.

382
383 For future studies, we recommend a longer follow-up time past 24 months to evaluate
384 maternal retention, adherence, and viral load suppression after most infants have completed
385 breastfeeding and HIV diagnostic testing. We also recommend including other urban and rural
386 clinics in other regions for a more representative sample of postpartum women with HIV in
387 Nigeria. Finally, we suggest surveys be administered throughout the MTCT prevention cascade to
388 assess barriers to ART adherence and retention in care in this population as a start to understanding
389 needs and considering interventions.

390

391 **Acknowledgments**

392 The authors acknowledge with sincere gratitude the leadership, laboratory and data staff,
393 clinicians, and patients of the APIN PEPFAR HIV program at the Jos University Teaching
394 Hospital. We also thank the APIN Public Health Initiatives for providing the data used for the
395 analyses.

396

397 **References**

- 398 1. Joint United Nations Programme on HIV/AIDS (UNAIDS). UNAIDS Fact sheet - Latest
399 global and regional statistics on the status of the AIDS epidemic. [Internet]. 2023 [cited
400 2023 Dec 22]. Available from:
401 https://www.unaids.org/sites/default/files/media_asset/UNAIDS_FactSheet_en.pdf
- 402 2. World Health Organization. The top 10 causes of death (Fact sheet) [Internet]. 2020 [cited
403 2023 Dec 22]. Available from: [https://www.who.int/news-room/fact-sheets/detail/the-top-](https://www.who.int/news-room/fact-sheets/detail/the-top-10-causes-of-death)
404 [10-causes-of-death](https://www.who.int/news-room/fact-sheets/detail/the-top-10-causes-of-death)
- 405 3. Joint United Nations Programme on HIV/AIDS (UNAIDS). UNAIDS Data 2021 - AIDS
406 Data book [Internet]. 2021 [cited 2023 Dec 22]. Available from:
407 [https://www.unaids.org/sites/default/files/media_asset/JC3032_AIDS_Data_book_2021_En](https://www.unaids.org/sites/default/files/media_asset/JC3032_AIDS_Data_book_2021_En.pdf)
408 [.pdf](https://www.unaids.org/sites/default/files/media_asset/JC3032_AIDS_Data_book_2021_En.pdf)
- 409 4. Country progress report - Nigeria. Global AIDS Monitoring 2020 [Internet]. Joint United
410 Nations Programme on HIV/AIDS (UNAIDS). 2020 [cited 2023 Dec 22]. Available from:
411 [https://www.unaids.org/sites/default/files/country/documents/NGA_2020_countryreport.pd](https://www.unaids.org/sites/default/files/country/documents/NGA_2020_countryreport.pdf)
412 [f](https://www.unaids.org/sites/default/files/country/documents/NGA_2020_countryreport.pdf)
- 413 5. Bassey AE, Miteu GD. A review of current trends in HIV epidemiology, surveillance, and
414 control in Nigeria. *Ann Med Surg* 2012. 2023 May;85(5):1790–5.
- 415 6. Chen JS, Pence BW, Rahangdale L, Patterson KB, Farel CE, Durr AL, et al. Postpartum HIV
416 care continuum outcomes in the southeastern USA. *AIDS Lond Engl*. 2019 Mar
417 15;33(4):637–44.
- 418 7. Mugwaneza P, Lyambabaje A, Umubyeyi A, Humuza J, Tsague L, Mwanyumba F, et al.
419 Impact of maternal ART on mother-to-child transmission (MTCT) of HIV at six weeks
420 postpartum in Rwanda. *BMC Public Health*. 2018 Nov 12;18(1):1248.
- 421 8. Agabu A, Baughman AL, Fischer-Walker C, de Klerk M, Mutenda N, Rusberg F, et al.
422 National-level effectiveness of ART to prevent early mother to child transmission of HIV in
423 Namibia. *PloS One*. 2020;15(11):e0233341.
- 424 9. Zijenah LS, Bandason T, Bara W, Chipiti MM, Katzenstein DA. Impact of Option B+
425 Combination Antiretroviral Therapy on Mother-to-Child Transmission of HIV-1, Maternal
426 and Infant Virologic Responses to Combination Antiretroviral Therapy, and Maternal and
427 Infant Mortality Rates: A 24-Month Prospective Follow-Up Study at a Primary Health Care
428 Clinic, in Harare, Zimbabwe. *AIDS Patient Care STDs*. 2022 Apr;36(4):145–52.
- 429 10. Larsen A, Magasana V, Dinh TH, Ngandu N, Lombard C, Cheyip M, et al. Longitudinal
430 adherence to maternal antiretroviral therapy and infant Nevirapine prophylaxis from
431 6 weeks to 18 months postpartum amongst a cohort of mothers and infants in South Africa.
432 *BMC Infect Dis*. 2019 Sep 16;19(Suppl 1):789.
- 433 11. Woelk GB, Ndatimana D, Behan S, Mukaminega M, Nyirabahizi E, Hoffman HJ, et al.
434 Retention of mothers and infants in the prevention of mother-to-child transmission of HIV
435 programme is associated with individual and facility-level factors in Rwanda. *J Int AIDS*
436 *Soc*. 2016;19(5 Suppl 4):20837.
- 437 12. Schrubbe LA, Stöckl H, Hatcher AM, Marston M, Kuchukhidze S, Calvert C. Prevalence
438 and risk factors of unsuppressed viral load among pregnant and breastfeeding women in

- 439 sub-Saharan Africa: analysis from population-based surveys. *AIDS Lond Engl*. 2023 Mar
440 15;37(4):659–69.
- 441 13. Rai S, Mahapatra B, Sircar S, Raj PY, Venkatesh S, Shaikat M, et al. Adherence to
442 Antiretroviral Therapy and Its Effect on Survival of HIV-Infected Individuals in Jharkhand,
443 India. *PloS One*. 2013;8(6):e66860.
- 444 14. Kiragga AN, Twinomuhwezi E, Banturaki G, Achieng M, Nampala J, Bagaya I, et al.
445 Outcomes of retained and disengaged pregnant women living with HIV in Uganda. *PloS*
446 *One*. 2021;16(5):e0251413.
- 447 15. Frescura L, Godfrey-Faussett P, Feizzadeh A A, El-Sadr W, Syarif O, Ghys PD, et al.
448 Achieving the 95 95 95 targets for all: A pathway to ending AIDS. *PloS One*.
449 2022;17(8):e0272405.
- 450 16. Joint United Nations Programme on HIV/AIDS (UNAIDS). Understanding Fast-Track:
451 Accelerating Action to End the AIDS Epidemic by 2030 [Internet]. 2015 [cited 2023 Dec
452 22]. Available from:
453 [https://www.unaids.org/sites/default/files/media_asset/201506_JC2743_Understanding_Fas](https://www.unaids.org/sites/default/files/media_asset/201506_JC2743_Understanding_FastTrack_en.pdf)
454 [tTrack_en.pdf](https://www.unaids.org/sites/default/files/media_asset/201506_JC2743_Understanding_FastTrack_en.pdf)
- 455 17. Federal Ministry of Health, Nigeria. National Guidelines for HIV and AIDS Treatment and
456 Care in Adolescents and Adults [Internet]. 2010 [cited 2023 Dec 22]. Available from:
457 [https://hivpolicywatch.org/duremaps/data/guidelines-](https://hivpolicywatch.org/duremaps/data/guidelines-rename/NigeriaAdultARTguidelines2010.pdf)
458 [rename/NigeriaAdultARTguidelines2010.pdf](https://hivpolicywatch.org/duremaps/data/guidelines-rename/NigeriaAdultARTguidelines2010.pdf)
- 459 18. National AIDS/STIs Control Programme, Federal Ministry of Health, Nigeria. Integrated
460 National Guidelines for HIV Prevention Treatment and Care [Internet]. 2014 [cited 2023
461 Dec 22]. Available from: [https://www.childrenandaids.org/sites/default/files/2017-](https://www.childrenandaids.org/sites/default/files/2017-05/Nigeria-Integrated-National-Guidelines-For-HIV-Prevention-treatment-and-care-2014.pdf)
462 [05/Nigeria-Integrated-National-Guidelines-For-HIV-Prevention-treatment-and-care-](https://www.childrenandaids.org/sites/default/files/2017-05/Nigeria-Integrated-National-Guidelines-For-HIV-Prevention-treatment-and-care-2014.pdf)
463 [2014.pdf](https://www.childrenandaids.org/sites/default/files/2017-05/Nigeria-Integrated-National-Guidelines-For-HIV-Prevention-treatment-and-care-2014.pdf)
- 464 19. National AIDS and STI's Control Programme, Federal Ministry of Health, Nigeria. National
465 Guidelines for HIV Prevention Treatment and Care [Internet]. 2016 [cited 2023 Dec 22].
466 Available from: [https://www.prepwatch.org/wp-](https://www.prepwatch.org/wp-content/uploads/2017/08/nigeria_national_guidelines_2016.pdf)
467 [content/uploads/2017/08/nigeria_national_guidelines_2016.pdf](https://www.prepwatch.org/wp-content/uploads/2017/08/nigeria_national_guidelines_2016.pdf)
- 468 20. Sangeda RZ, Mosha F, Prosperi M, Aboud S, Vercauteren J, Camacho RJ, et al. Pharmacy
469 refill adherence outperforms self-reported methods in predicting HIV therapy outcome in
470 resource-limited settings. *BMC Public Health*. 2014 Oct 4;14:1035.
- 471 21. Chi BH, Yiannoutsos CT, Westfall AO, Newman JE, Zhou J, Cesar C, et al. Universal
472 definition of loss to follow-up in HIV treatment programs: a statistical analysis of 111
473 facilities in Africa, Asia, and Latin America. *PLoS Med*. 2011 Oct;8(10):e1001111.
- 474 22. Adeniyi OV, Ajayi AI. Level and determinants of postpartum adherence to antiretroviral
475 therapy in the Eastern Cape, South Africa. *PloS One*. 2020;15(2):e0229592.
- 476 23. Haas AD, Msukwa MT, Egger M, Tenthani L, Tweya H, Jahn A, et al. Adherence to
477 Antiretroviral Therapy During and After Pregnancy: Cohort Study on Women Receiving
478 Care in Malawi's Option B+ Program. *Clin Infect Dis Off Publ Infect Dis Soc Am*. 2016
479 Nov 1;63(9):1227–35.
- 480 24. Okawa S, Chirwa M, Ishikawa N, Kapyata H, Msiska CY, Syakantu G, et al. Longitudinal
481 adherence to antiretroviral drugs for preventing mother-to-child transmission of HIV in
482 Zambia. *BMC Pregnancy Childbirth*. 2015 Oct 12;15:258.

- 483 25. Dada AO, Abubakar A, Bashorun A, Nguku P, Oladimeji A. Predictors of adherence to
484 option B+ approach for the prevention of mother to child transmission of human
485 immunodeficiency virus in Abuja, 2017. *Pan Afr Med J.* 2021;38:54.
- 486 26. Nachega JB, Uthman OA, Anderson J, Peltzer K, Wampold S, Cotton MF, et al. Adherence
487 to antiretroviral therapy during and after pregnancy in low-income, middle-income, and
488 high-income countries: a systematic review and meta-analysis. *AIDS Lond Engl.* 2012 Oct
489 23;26(16):2039–52.
- 490 27. Decker S, Rempis E, Schnack A, Braun V, Rubaihayo J, Busingye P, et al. Prevention of
491 mother-to-child transmission of HIV: Postpartum adherence to Option B+ until 18 months
492 in Western Uganda. *PloS One.* 2017;12(6):e0179448.
- 493 28. Gumede-Moyo S, Filteau S, Munthali T, Todd J, Musonda P. Implementation effectiveness
494 of revised (post-2010) World Health Organization guidelines on prevention of mother-to-
495 child transmission of HIV using routinely collected data in sub-Saharan Africa: A
496 systematic literature review. *Medicine (Baltimore).* 2017 Oct;96(40):e8055.
- 497 29. Meloni ST, Chang C, Chaplin B, Rawizza H, Jolayemi O, Banigbe B, et al. Time-Dependent
498 Predictors of Loss to Follow-Up in a Large HIV Treatment Cohort in Nigeria. *Open Forum
499 Infect Dis.* 2014 Sep;1(2):ofu055.
- 500 30. Mitiku I, Arefayne M, Mesfin Y, Gizaw M. Factors associated with loss to follow-up among
501 women in Option B+ PMTCT programme in northeast Ethiopia: a retrospective cohort
502 study. *J Int AIDS Soc.* 2016;19(1):20662.
- 503 31. Adhikari EH, Yule CS, Roberts SW, Rogers VL, Sheffield JS, Kelly MA, et al. Factors
504 Associated with Postpartum Loss to Follow-Up and Detectable Viremia After Delivery
505 Among Pregnant Women Living with HIV. *AIDS Patient Care STDs.* 2019 Jan;33(1):14–
506 20.
- 507 32. Fuente-Soro L, López-Varela E, Augusto O, Bernardo EL, Saco C, Nhacolo A, et al. Loss
508 to follow-up and opportunities for reengagement in HIV care in rural Mozambique: A
509 prospective cohort study. *Medicine (Baltimore).* 2020 May;99(20):e20236.
- 510 33. Zürcher K, Mooser A, Anderegg N, Tymejczyk O, Couvillon MJ, Nash D, et al. Outcomes
511 of HIV-positive patients lost to follow-up in African treatment programmes. *Trop Med Int
512 Health TM IH.* 2017 Apr;22(4):375–87.
- 513 34. Moyo F, Mazanderani AH, Kufa T, Sherman GG. Maternal HIV viral load testing during
514 pregnancy and postpartum care in Gauteng Province, South Africa. *South Afr Med J Suid-
515 Afr Tydskr Vir Geneesk.* 2021 Apr 30;111(5):469–73.
- 516 35. Ngandu NK, Lombard CJ, Mbira TE, Puren A, Waitt C, Prendergast AJ, et al. HIV viral load
517 non-suppression and associated factors among pregnant and postpartum women in rural
518 northeastern South Africa: a cross-sectional survey. *BMJ Open.* 2022 Mar
519 10;12(3):e058347.
- 520 36. Federal Ministry of Health, Nigeria. Nigeria HIV/AIDS Indicator and Impact Survey
521 (NAIIS) 2018: Technical Report [Internet]. Abuja, Nigeria: Federal Ministry of Health;
522 2019 [cited 2023 Dec 22]. Available from:
523 <https://www.ciheb.org/media/som/microsites/ciheb/documents/NAIIS-Report-2018.pdf>
- 524 37. Hoffman RM, Warshaw MG, Amico KR, Pilotto J, Masheto G, Achalapong J, et al.
525 Predictors of Viremia in Postpartum Women on Antiretroviral Therapy. *J Acquir Immune
526 Defic Syndr* 1999. 2020 Jan 1;83(1):72–80.
- 527 38. Landes M, van Lettow M, van Oosterhout JJ, Schouten E, Auld A, Kalua T, et al. Early post-
528 partum viremia predicts long-term non-suppression of viral load in HIV-positive women on

- 529 ART in Malawi: Implications for the elimination of infant transmission. *PloS One*.
530 2021;16(3):e0248559.
- 531 39. Geldsetzer P, Yapa HMN, Vaikath M, Ogbuoji O, Fox MP, Essajee SM, et al. A systematic
532 review of interventions to improve postpartum retention of women in PMTCT and ART
533 care. *J Int AIDS Soc*. 2016;19(1):20679.
- 534 40. Sabin LL, Halim N, Hamer DH, Simmons EM, Jonnalagadda S, Larson Williams A, et al.
535 Retention in HIV Care Among HIV-Seropositive Pregnant and Postpartum Women in
536 Uganda: Results of a Randomized Controlled Trial. *AIDS Behav*. 2020 Nov;24(11):3164–
537 75.
- 538 41. Abuogi LL, Onono M, Odeny TA, Owuor K, Helova A, Hampanda K, et al. Effects of
539 behavioural interventions on postpartum retention and adherence among women with HIV
540 on lifelong ART: the results of a cluster randomized trial in Kenya (the MOTIVATE trial).
541 *J Int AIDS Soc*. 2022 Jan;25(1):e25852.
- 542 42. Matthews LT, Orrell C, Bwana MB, Tsai AC, Psaros C, Asiimwe S, et al. Adherence to HIV
543 antiretroviral therapy among pregnant and postpartum women during the Option B+ era:
544 12-month cohort study in urban South Africa and rural Uganda. *J Int AIDS Soc*. 2020
545 Aug;23(8):e25586.
- 546 43. Myer L, Phillips TK, Zerbe A, Brittain K, Lesosky M, Hsiao NY, et al. Integration of
547 postpartum healthcare services for HIV-infected women and their infants in South Africa:
548 A randomised controlled trial. *PLoS Med*. 2018 Mar;15(3):e1002547.
- 549 44. Phillips TK, Mogoba P, Brittain K, Gomba Y, Zerbe A, Myer L, et al. Long-Term Outcomes
550 of HIV-Infected Women Receiving Antiretroviral Therapy After Transferring Out of an
551 Integrated Maternal and Child Health Service in South Africa. *J Acquir Immune Defic*
552 *Syndr 1999*. 2020 Mar 1;83(3):202–9.
- 553 45. Myer L, Odayar J, Malaba TR, Allerton J, Kabanda S, Hu NC, et al. Improved virologic
554 outcomes in postpartum women living with HIV referred to differentiated models of care.
555 *AIDS Lond Engl*. 2022 Dec 1;36(15):2203–11.
- 556 46. Sam-Agudu NA, Ramadhani HO, Isah C, Ereka S, Fan-Osuala C, Anaba U, et al. The
557 Impact of Structured Mentor Mother Programs on Presentation for Early Infant Diagnosis
558 Testing in Rural North-Central Nigeria: A Prospective Paired Cohort Study. *J Acquir*
559 *Immune Defic Syndr 1999*. 2017 Jun 1;75 Suppl 2:S182–9.
- 560 47. Vitalis D. Factors affecting antiretroviral therapy adherence among HIV-positive pregnant
561 and postpartum women: an adapted systematic review. *Int J STD AIDS*. 2013
562 Jun;24(6):427–32.
- 563 48. Hodgson I, Plummer ML, Konopka SN, Colvin CJ, Jonas E, Albertini J, et al. A systematic
564 review of individual and contextual factors affecting ART initiation, adherence, and
565 retention for HIV-infected pregnant and postpartum women. *PloS One*.
566 2014;9(11):e111421.
- 567 49. Sakyi KS, Lartey MY, Kennedy CE, Dension JA, Mullany LC, Owusu PG, et al. Barriers to
568 maternal retention in HIV care in Ghana: key differences during pregnancy and the
569 postpartum period. *BMC Pregnancy Childbirth*. 2020 Jul 17;20(1):398.
- 570 50. Oyeledun B, Phillips A, Oronsaye F, Alo OD, Shaffer N, Osibo B, et al. The Effect of a
571 Continuous Quality Improvement Intervention on Retention-In-Care at 6 Months
572 Postpartum in a PMTCT Program in Northern Nigeria: Results of a Cluster Randomized
573 Controlled Study. *J Acquir Immune Defic Syndr 1999*. 2017 Jun 1;75 Suppl 2:S156–64.

574

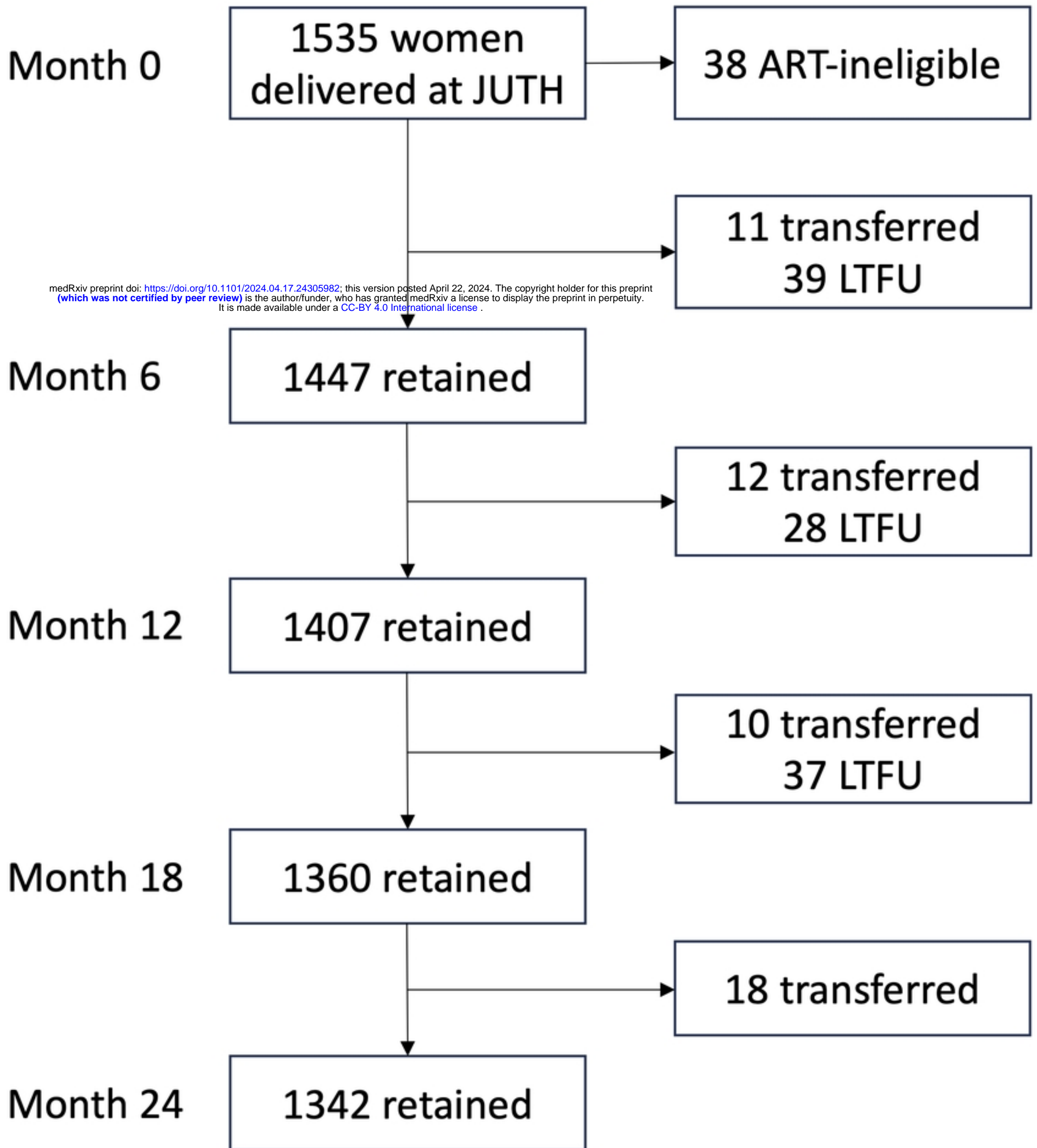


Figure 1

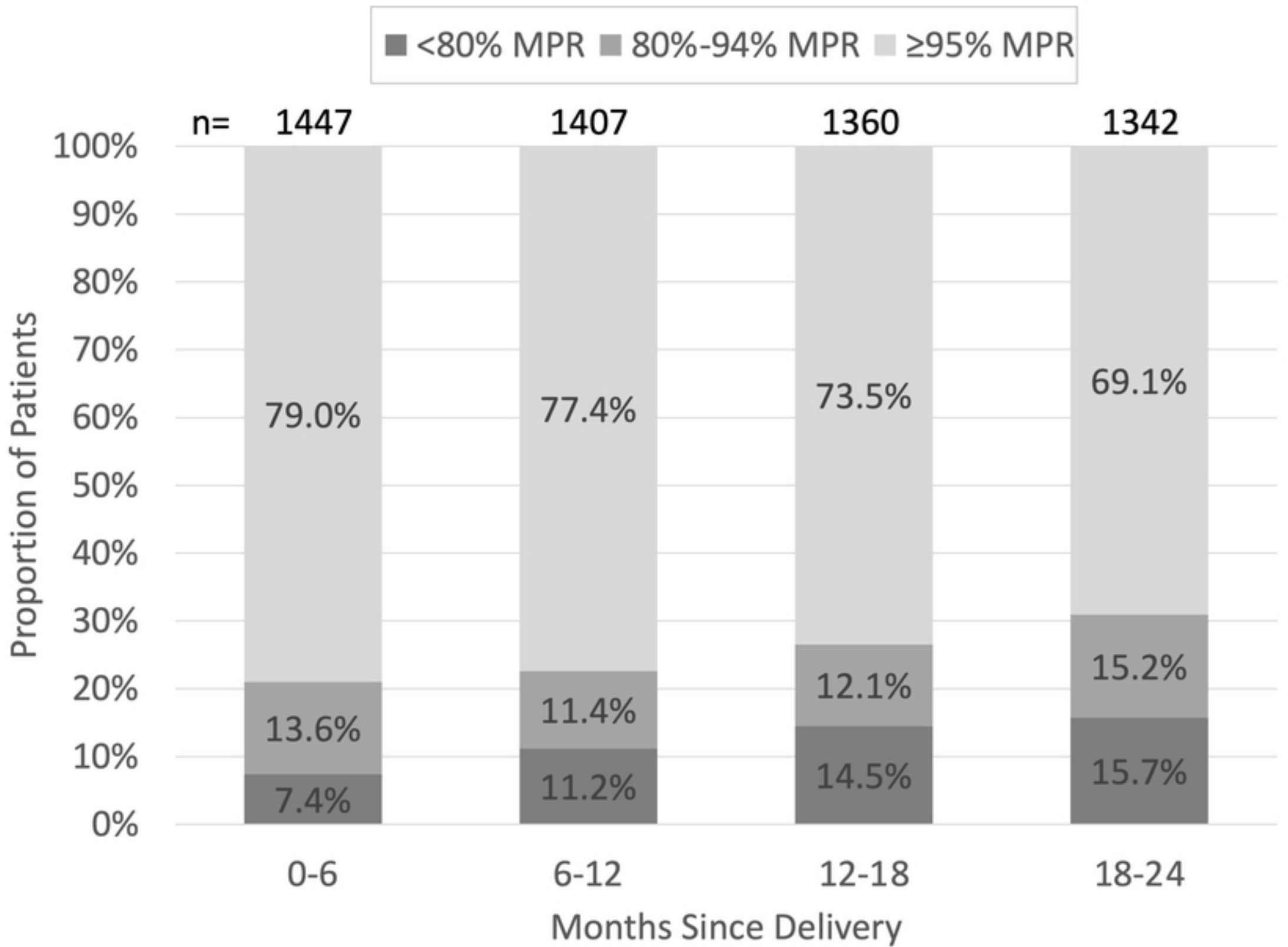


Figure 2

Variable	aOR (95% CI)	p-value
Time since HIV Diagnosis		
Diagnosis during Pregnancy/Delivery	Ref	-
≤3 years Prepartum	0.677 (0.307-1.492)	0.3334
3.1-6 years Prepartum	0.421 (0.202-0.876)	0.0206
6.1-8 years Prepartum	0.347 (0.161-0.745)	0.0066
>8 years Prepartum	0.231 (0.106-0.502)	0.0002
Gravidity		
1	Ref	-
2-3	1.981 (0.559-7.022)	0.2898
≥4	3.733 (1.095-12.73)	0.0353
Total Antenatal Care Visits		
1-2	Ref	-
3-4	0.631 (0.382-1.045)	0.0734
>4	0.312 (0.171-0.568)	0.0001
Delivery Site		
JUTH	Ref	-
Other Clinic/Home/Road	2.752 (1.166-6.497)	0.0209

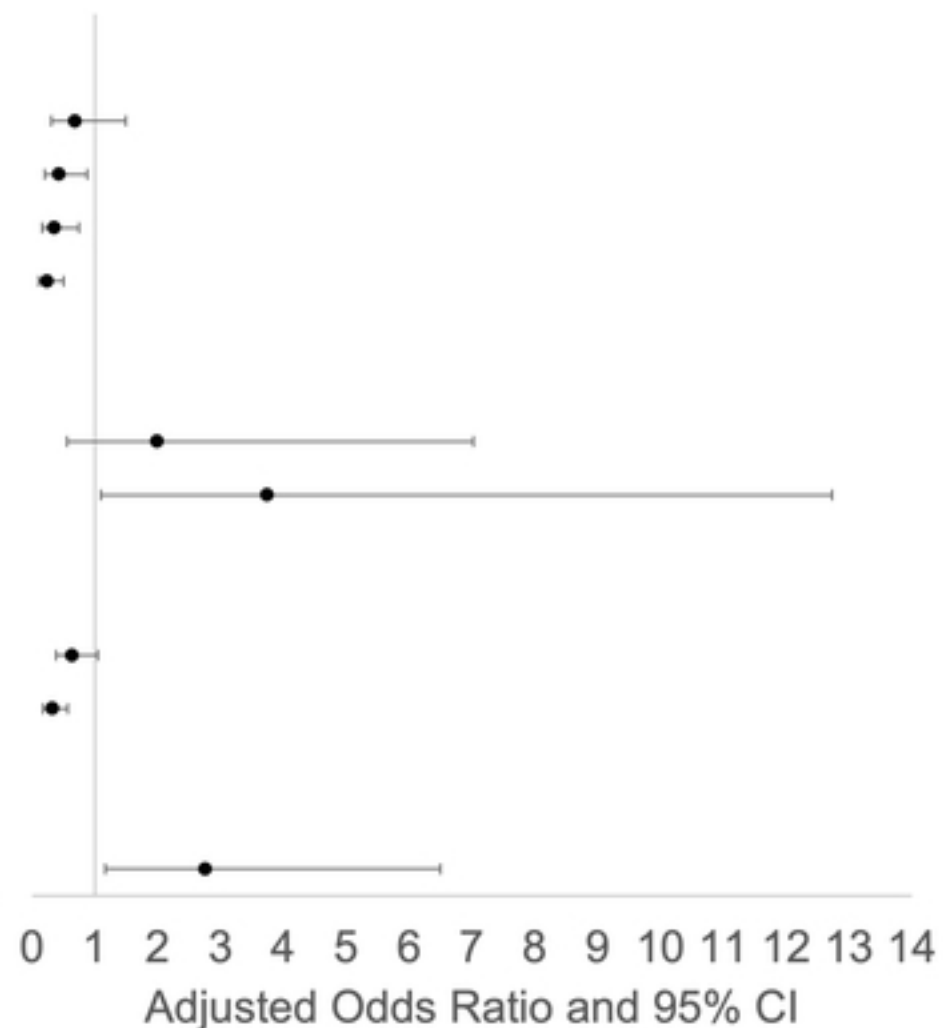


Figure 3

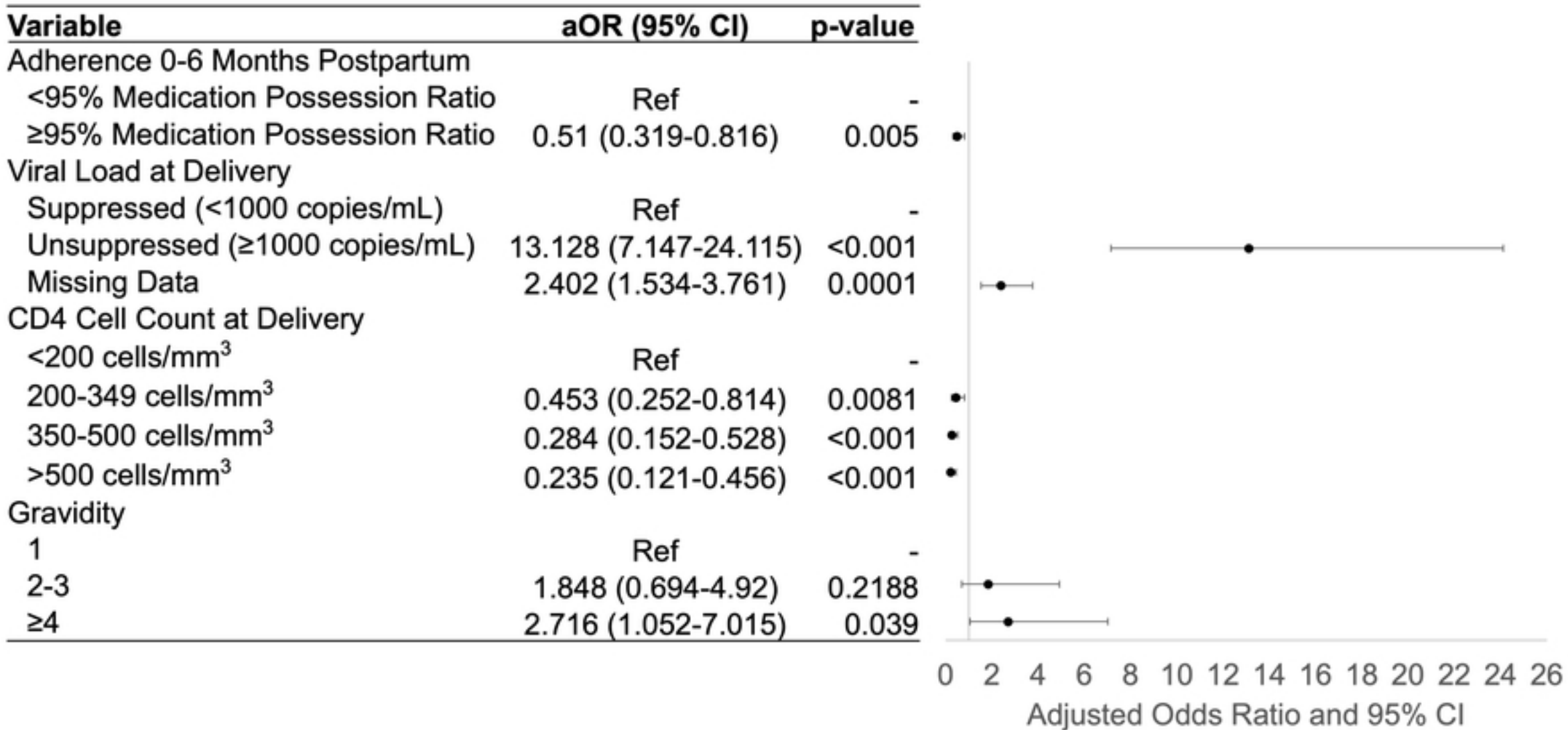


Figure 4