

1     **Antihypertensive Medication Adherence and Medical Costs, Health Care Utilization, and**  
2                     **Labor Productivity among Persons with Hypertension**

3  
4     Jun Soo Lee, PhD<sup>1</sup>, Raul Segura Escano, PhD<sup>2</sup>, Nicole L. Therrien, PharmD, MPH<sup>1</sup>, Ashutosh  
5     Kumar, PhD, MS, MS<sup>1,3</sup>, Ami Bhatt, MPH, DrPH<sup>1,4</sup>, Lisa M. Pollack, PhD, MPH, MPT<sup>1</sup>, Sandra  
6                     L. Jackson, PhD<sup>1\*</sup>, Feijun Luo, PhD<sup>1\*</sup>

7  
8     <sup>1</sup> Division for Heart Disease and Stroke Prevention, Centers for Disease Control and Prevention,  
9     Atlanta, GA, USA

10    <sup>2</sup> Division of Workforce Development, Centers for Disease Control and Prevention, Atlanta, GA,  
11    USA

12    <sup>3</sup> Bizzell US, New Carrollton, MD, USA

13    <sup>4</sup> Applied Science, Research, and Technology Inc. (ASRT Inc.), Atlanta, Georgia, USA

14  
15    \* Sandra L. Jackson and Feijun Luo are co-senior authors

16  
17    Keywords: antihypertensives, medication adherence, medical costs, productivity loss,  
18    hypertension.

19  
20    Word count: 3,212.

21    Abstract: 248; Figures: 1; Tables: 4; Appendix Tables: 12; Appendix Figures: 4; References: 55.

22    Corresponding author:

23    Jun Soo Lee, PhD

24    Division for Heart Disease and Stroke Prevention

25    Centers for Disease Control and Prevention

26    4770 Buford Hwy, Building 107

27    Atlanta, GA 30341

28    Tel: 770-488-8978

29    Email: PQA2@cdc.gov

30  
31    The findings and conclusions in this article are those of the authors and do not necessarily  
32    represent the official position of the Centers for Disease Control and Prevention. Use of trade  
33    names and commercial sources is for identification only and does not imply endorsement by the  
34    U.S. Department of Health and Human Services.

35  
36    There is no potential conflict of interest related to any part of this article.

37  
38    Sources of funding: The authors received no financial support for the research, authorship,  
39    and/or publication of this article.

40 **Abstract**

41  
42 **Background:** Hypertension affects nearly half of U.S. adults, yet remains inadequately  
43 controlled in over three-quarters of these cases. This study aims to assess the association between  
44 adherence to antihypertensive medications and total medical costs, health care utilization, and  
45 productivity-related outcomes.

46  
47 **Methods:** We conducted a retrospective cohort study using MarketScan databases, which  
48 included individuals aged 18–64 with non-capitated health insurance plans in 2019. Adherence  
49 was defined as  $\geq 80\%$  Medication Possession Ratio (MPR) for prescribed antihypertensive  
50 medications. We used a generalized linear model to estimate total medical costs, a negative  
51 binomial model to estimate health care utilization (emergency department visits and inpatient  
52 admissions), an exponential hurdle model to estimate productivity-related outcomes (number of  
53 sick absences, short-term disability [STD], long-term disability [LTD]), and a two-part model to  
54 estimate productivity-related costs in 2019 U.S. dollars. All models were adjusted for age, sex,  
55 urbanicity, census region, and comorbidities. We reported average marginal effects for outcomes  
56 related to antihypertensive medication adherence.

57  
58 **Results:** Among 379,503 individuals with hypertension in 2019, 54.4% adhered to  
59 antihypertensives. Per-person, antihypertensive medication adherence was associated with  
60 \$1,441 lower total medical costs, \$11 lower sick absence costs, \$291 lower STD costs, and \$69  
61 lower LTD costs. Per 1,000 individuals, medication adherence was associated with lower  
62 healthcare utilization, including 200 fewer ED visits and 90 fewer inpatient admissions, and  
63 productivity-related outcomes, including 20 fewer sick absence days and 442 fewer STD days.

64  
65 **Conclusions:** Adherence to antihypertensives was consistently associated with lower total  
66 medical costs, reduced healthcare utilization, and improved productivity-related outcomes.

## 67 INTRODUCTION

68 Hypertension elevates the risk for heart disease and stroke, two leading causes of death  
69 for people in the U.S.<sup>1</sup> Almost half of U.S. adults have hypertension, and over three-quarters of  
70 these individuals do not have their blood pressure controlled to <130/80 mmHg.<sup>2</sup> Prescription  
71 medication is recommended, along with lifestyle modifications, for nearly 80% of those with  
72 hypertension to achieve blood pressure control.<sup>2</sup> Adherence to antihypertensive medications, i.e.  
73 consistent use as prescribed, plays a critical role in hypertension control.<sup>3-6</sup> Medication adherence  
74 is multifactorial and may be influenced by socioeconomic and demographic, health care system,  
75 therapeutic, and patient-related factors.<sup>4</sup> Improving adherence to antihypertensive medications  
76 among people with hypertension is crucial for improving national hypertension control rates.<sup>5,6</sup>

77 In addition to improved hypertension control, adherence to antihypertensive medications  
78 is associated with reduced risk of stroke, fewer hospitalizations, and decreased cardiovascular  
79 morbidity and mortality.<sup>7-14</sup> Despite its importance, rates of adherence to antihypertensive  
80 medications are suboptimal, though estimates vary by method of measurement and population  
81 characteristics.<sup>4</sup> Chang et al. 2015<sup>15</sup> found that nearly two-thirds of U.S. adults with hypertension  
82 were considered adherent to their antihypertensive medications, with lower adherence rates  
83 observed among Medicare beneficiaries, women, and younger adults. Improving medication  
84 adherence may impact economic outcomes, including total medical costs,<sup>16-18</sup> hospitalization and  
85 emergency department (ED) visits,<sup>11,19-21</sup> and other indirect outcomes such as work  
86 productivity<sup>22,23</sup> and mortality rates.<sup>24,25</sup> Lost work productivity, attributed to chronic conditions  
87 and resulting in absenteeism or disability leave, imposes an economic burden on the patient,  
88 employers, and healthcare systems.<sup>26,27</sup> Enhanced medication adherence among employees with  
89 hypertension may lead to fewer days of absence and health care utilization savings.<sup>27-29</sup> Although

90 some studies have documented costs and health care utilization associated with adherence to  
91 antihypertensive medications,<sup>11,16-19</sup> none have investigated productivity-related outcomes—  
92 indirect benefits—associated with such adherence.

93 This study aims to investigate the economic burden associated with adherence to  
94 antihypertensive medications, including total medical costs, health care utilization, and labor  
95 productivity. Administrative commercial claims linked with employer-provided payroll  
96 databases from 2019 were utilized to examine both medical costs and productivity-related costs  
97 associated with medication adherence.

## 98 **METHODS**

### 99 *Data*

100 We used the 2019 MarketScan Commercial Claims and Encounters (CCAЕ) and Health  
101 and Productivity Management (HPM) databases.<sup>30</sup> The CCAЕ database contains claims for  
102 inpatient, emergency department (ED), outpatient, and prescription drugs from enrollees and  
103 their dependents covered by employer-sponsored commercial health insurance plans. This  
104 database aggregates data from over 300 employers, more than 30 health plans, and over 500  
105 hospitals across the U.S. The HPM database is derived from a subset of employers' payroll  
106 database, including information on recreational, sick, and other absences, as well as absences  
107 related to short-term disability (STD) and long-term disability (LTD). Linking the HPM database  
108 to commercial claims information in the CCAЕ database enables researchers to analyze  
109 associations between medical conditions, medication adherence, total medical costs, health care  
110 utilization, and labor productivity outcomes. This study involved secondary data analysis using  
111 de-identified information and was categorized as non-research and thus exempt from  
112 Institutional Review Board review.

113

### 114 *Identification of individuals with hypertension*

115 We included individuals aged 18–64 years, continuously enrolled in the 2019  
116 MarketScan CCAЕ and HPM databases. Within this group, individuals with hypertension were  
117 defined if they had at least one hypertension diagnosis (International Classification of Diseases,  
118 Tenth Revision, Clinical Modification [ICD-10-CM]=I10–I15) and at least one antihypertensive  
119 drug claim in 2019 (Appendix Table 1). We excluded individuals with a history of pregnancy  
120 (Appendix Table 2) and/or those covered under capitated insurance.

121

## 122 *Identification of adherence to antihypertensive medications*

123 Antihypertensive medications (antihypertensives) were identified using generic names  
124 and categorized by therapeutic class (ACE inhibitors, angiotensin receptor blockers, beta-  
125 blockers, calcium channel blockers, diuretics, other antihypertensives, and renin-angiotensin  
126 system antagonists [ACE inhibitors, angiotensin receptor blockers, and direct renin inhibitors])  
127 (Appendix Table 1). The average medication possession ratio (MPR) for antihypertensives by  
128 therapeutic class in 2019 was calculated as the ratio of the sum of the days' supply for all drug  
129 fills to the number of days in the study period.<sup>31</sup> For individuals taking multiple  
130 antihypertensives, the MPR was calculated as an average of the MPR for each therapeutic class.  
131 Adherence was defined as an average MPR greater than or equal to 80%, while non-adherence  
132 was indicated by an average MPR below 80%.<sup>31</sup> A dummy indicator of adherence to  
133 antihypertensives was created, with a value of one for adherent individuals and zero for non-  
134 adherent individuals.

135

## 136 *Outcome variables*

137 Dependent variables included 1) total all-cause medical costs (the sum of individuals'  
138 out-of-pocket costs and insurance payments), 2) health care utilization measured by the number  
139 of ED visits and inpatient admissions, and 3) productivity-related outcomes quantified by the  
140 number of sick absences and absences related to STD and LTD. Our focus was on sick absences  
141 rather than other types, such as recreational, jury duty, military leave, or plant shutdowns, which  
142 may not be directly affected by medication adherence. Productivity-related costs were calculated  
143 by multiplying absence hours by average hourly wages in 2019<sup>32</sup>, with adjustments: 100% for

144 absences, 70% for STD-related absences, and 60% for LTD-related absences.<sup>32,33</sup> Average  
145 hourly wages in 2019 U.S. dollars (\$27.99) were sourced from the U.S. Bureau of Labor  
146 Statistics (BLS) for all employees on private nonfarm payrolls.

147

### 148 *Statistical analysis*

149 We categorized individuals into age groups (18-34 [reference], 35-44, 45-54, and 55-64),  
150 sex (male [reference] and female), urbanicity (rural [reference] and urban), census regions  
151 (Northeast [reference], Midwest, South, and West), and comorbidities, specifically the Quan 17  
152 Charlson Comorbidities.<sup>34</sup> Comorbidities were defined if individuals had at least one inpatient  
153 admission or two outpatient visits with a 30-day interval.

154 Summary statistics were documented for age, sex, urbanicity and census region of  
155 residence, and comorbidities. Differences in average values by medication adherence status were  
156 tested using the Wilcoxon rank-sum test for continuous variables and Pearson's Chi-square test  
157 for categorical variables.

158 For total medical costs, a generalized linear model with a log link and gamma distribution  
159 was used. For costs associated with productivity-related outcomes, we utilized a two-part model.  
160 The first part was a logit model, and the second part was a generalized linear model with a log  
161 link and gamma distribution. For health care utilization (number of ED visits and inpatient  
162 admissions), a negative binomial model was used. For productivity-related outcomes, where they  
163 contained excess zeros, we employed an exponential hurdle model.

164 All models were adjusted for individuals' age, sex, urbanicity, census regions, and dummy  
165 indicators for the 17 Charlson comorbidities. Average marginal effects of outcomes associated  
166 with adherence to antihypertensives were reported.

167 For the sensitivity analysis, we employed the overlap weighting method so measured  
168 confounders were equally distributed between the adherence and non-adherence groups.<sup>35-38</sup> The  
169 overlap weighting method mimics random assignment by creating a pseudo-population through  
170 weighting so that measured confounders are equally distributed between adherence and non-  
171 adherence groups.<sup>36,37</sup> We calculated overlap weights that were proportional to the probability of  
172 individuals belonging to the opposite group. Weights were obtained from propensity scores,  
173 estimated by logistic regression with medication adherence as the outcome. We used the iterative  
174 method to estimate propensity scores proposed by Imbens and Rubin.<sup>39,40</sup> This method involved  
175 utilizing baseline covariates, as reported in the main model, to perform higher-order interactions  
176 for covariate selection in logistic regression, maximizing the likelihood function. Estimates of  
177 logistic regression, assessment of covariate balance, and probability distributions for weighted  
178 samples for overall and by sex, age group and urbanicity are presented in Appendix Tables 4-6  
179 and Appendix Figures 1-4. *P*-values less than 0.05 were considered statistically significant. All  
180 analyses were conducted by using Stata SE version 17 (StataCorp, College Station, TX) in 2023.



## 181 **RESULTS**

182 A total of 379,503 individuals with hypertension were identified who had availability of  
183 absence, STD, or LTD information (Figure 1). All 379,503 individuals had information on  
184 medical costs, health care utilization, and drug claims. Among these individuals, 54,608 (14%)  
185 had absence information, 328,073 (86%) had STD information, and 323,445 (85%) had LTD  
186 information.

187 Out of the 379,503 individuals, 206,310 (54.4%) individuals adhered to antihypertensives  
188 (Table 1). Those who adhered (mean [SD] age, 52.5 [7.7] years) were older than those who did  
189 not (mean [SD] age, 49.4 [8.9];  $P<0.001$ ). Adherent individuals were less likely to be female  
190 (31.35% vs. 36.70%;  $P<0.001$ ). Medication adherence rates were also lower for females than  
191 males (50.43% vs 56.37%;  $P<0.001$ ), and for individuals living in urban areas compared to those  
192 in rural areas (54.20% vs 55.83%;  $P<0.001$ ) (Appendix Table 7). Adjusted results showed that  
193 females were 5.83% (95% CI, 6.16 to 5.50;  $P<0.001$ ) less likely to adhere to medications than  
194 males, and urban residents were 1.38% (95% CI, -1.89 to -0.86;  $P<0.001$ ) less likely to adhere to  
195 medications than those residing in rural areas (Appendix Table 8).

196 Table 2 presents the total medical costs associated with adherence to antihypertensives.  
197 The predicted total medical cost for individuals who adhered to antihypertensives was \$17,770  
198 (95% CI, 17,238 to 18,301), while for those who did not adhere, the predicted total medical cost  
199 was \$19,210 (95% CI, 18,643 to 19,778). Thus, compared to individuals who did not adhere,  
200 those who adhered had a \$1,441 per individual lower total medical costs (95% CI, -1,709 to -  
201 1,172;  $P<0.001$ ). The association of medication adherence with total medical costs was more  
202 pronounced for individuals residing in urban areas, showing an additional decrease of \$855 (95%  
203 CI, -1,633 to -77;  $P<0.05$ ), compared with those living in rural areas.

204 Table 3 documents the number of ED visits and inpatient admissions per 1,000  
205 individuals associated with adherence, both overall and stratified by sex and urbanicity of  
206 residence. Adherence to antihypertensives was associated with 200 fewer ED visits per 1,000  
207 individuals (95% CI, -206 to -194;  $P<0.001$ ) and 89.6 fewer inpatient admissions per 1,000  
208 individuals (95% CI, -95.5 to -83.7;  $P<0.001$ ). Women experienced an additional 113 fewer ED  
209 visits (95% CI, -126 to -99.5;  $P<0.001$ ) associated with medication adherence compared to men,  
210 while men had an additional 26.6 fewer inpatient admissions (95% CI, 17.9 to 25.3;  $P<0.001$ )  
211 associated with medication adherence compared to women. Individuals living in urban areas had  
212 fewer inpatient admissions associated with medication adherence than those living in rural areas  
213 by 35.5 (95% CI, -46.8 to -24.2;  $P<0.001$ ).

214 Table 4 presents productivity losses per 1,000 individuals associated with medication  
215 adherence. Individuals adhering to antihypertensives had fewer sick absences (-19.8 days per  
216 1,000 individuals, 95% CI, -28.0 to -11.6;  $P<0.001$ ) and STD days (-442 days, 95% CI, -548 to -  
217 335;  $P<0.001$ ). The association between medication adherence and the number of sick absences  
218 was more pronounced for individuals living in rural areas, showing a stronger association in sick  
219 absences by 46.6 days (95% CI, 11.3 to 81.9;  $P<0.001$ ) than those living in urban areas.

220 Appendix Table 3 presents the productivity costs per individual associated with  
221 medication adherence. Individuals adhering to antihypertensives had \$11 lower costs associated  
222 with sick absences (95% CI, -16 to -6;  $P<0.001$ ), \$291 lower costs associated with STD (95% CI,  
223 -315 to -268;  $P<0.001$ ), and \$69 lower costs associated with LTD (95% CI, -97 to -41;  $P<0.001$ )  
224 compared to those who did not adhere. Women experienced a stronger association between STD  
225 costs and medication adherence (\$72, 95% CI, -121 to -22;  $P<0.01$ ) than men, and individuals

226 living in urban areas had a stronger association in costs associated with STD (-\$173, 95% CI, -  
227 249 to -97;  $P < 0.001$ ) than those living in rural areas.

228 Sensitivity analyses using overlap-weighted model showed overall results similar to the  
229 main results (Appendix Tables 9-12). Specifically, compared with those who did not adhere,  
230 individuals adhering to antihypertensives had a \$1,378 lower total medical costs per individual  
231 (95% CI, -1,628 to -1,128;  $P < 0.001$ ) and 82 fewer inpatient admissions per 1,000 individuals (95%  
232 CI, -87 to -77;  $P < 0.001$ ) (Appendix Tables 9 and 10). Appendix Tables 11 and 12 present  
233 productivity-related outcomes, demonstrating consistent results.

## 234 **DISCUSSION**

235           Using administrative linked commercial claims and employer-provided payroll databases,  
236 we examined total medical costs, health care utilization, and labor productivity associated with  
237 adherence to antihypertensives. Individuals with higher adherence rates had significantly lower  
238 total medical costs (\$1,441 per individual), along with fewer ED visits (200 fewer visits per  
239 1,000 individuals per year) and fewer inpatient admissions (89.6 fewer admissions per 1,000  
240 individuals per year) compared with their non-adherent counterparts. For productivity-related  
241 outcomes, individuals who adhered to antihypertensives had fewer sick absences, STD, and LTD,  
242 as well as lower related costs, compared with those who did not adhere. When analyzing the  
243 association of medication adherence among population subgroups, we observed differences by  
244 sex and urbanicity of residence.

245           Our findings align with existing literature on the association between medication  
246 adherence and reduced preventable health care utilization, decreased total medical costs, and  
247 improved productivity-related outcomes<sup>22,23,29</sup>. In a 2018 systematic review, Cutler et al.<sup>16</sup>  
248 identified 12 studies focused on cardiovascular disease and total healthcare costs, revealing  
249 adjusted annual economic costs of non-adherence for cardiovascular disease ranged from \$3,347  
250 to \$19,472 per person. Baker-Goering et al. in 2019<sup>18</sup> found predicted expenditures to be \$610  
251 lower among individuals who were adherent to antihypertensives compared with those who were  
252 not adherent. While our findings indicate more modest savings, variations in the formula used to  
253 calculate medication adherence and the medication non-adherence cut-off points, as well as our  
254 focus on hypertension, likely contribute to these differences. With regard to productivity, Gifford  
255 et al. systematic review in 2018<sup>41</sup> on adherence to antihypertensives demonstrated that employee  
256 populations with chronic conditions can generate productivity and health care utilization savings

257 at the organization level as adherence increases. Our analysis aligns with these findings in  
258 productivity and health care utilization savings. However, differences in indicators, outcome  
259 measures, and chronic conditions may have influenced the magnitude of estimated savings.

260 Describing the economic costs of uncontrolled hypertension has been recognized as a  
261 strategic approach to elevate hypertension control to a national priority and improve  
262 hypertension control across the U.S.<sup>5</sup> The association between medication adherence and total  
263 medical costs, health care utilization, and productivity-related outcomes can be explained  
264 through various potential mechanisms. Individuals who adhere to medications typically exhibit  
265 better control of chronic disease and health outcomes,<sup>7-10,12-14,42</sup> leading to lower number of ED  
266 visits and inpatient admissions related to costly acute events, subsequently lowering total  
267 medical costs. Moreover, individuals with improved health outcomes tend to experience fewer  
268 sick absences<sup>41</sup> and rely less on disability-related insurance, contributing to increased  
269 productivity and reduced costs to employers. However, it is crucial to acknowledge the potential  
270 influence of unmeasured social determinants of health (SDOH), especially economic factors such  
271 as poverty, unstable housing, food insecurity, lack of transportation, and lack of social support.  
272 These factors may have affected both lower medication adherence and medical costs, ED visits,  
273 sick absences, etc.<sup>43-45</sup> While our study controlled for many confounding variables, the potential  
274 impact of these unmeasured SDOH indicators cannot be ignored and may represent an important  
275 area for future research.

276 Prior studies have highlighted variations in medication adherence based by sex.<sup>46</sup> Women,  
277 while more likely to use medication annually than their male counterparts, were less likely to  
278 adhere to prescribed medication.<sup>47</sup> This difference might be attributable to women more  
279 frequently experiencing side effects<sup>48,49</sup> and managing complex regimens,<sup>50</sup> despite their higher

280 likelihood of seeking preventive care.<sup>51</sup> A separate study found that, although men demonstrated  
281 higher rates of adherence than women in the age range of 20-40 years, this trend reversed later in  
282 life (50-70 years).<sup>52</sup> Further research could help elucidate the reasons behind sex-based  
283 differences.

284         The Surgeon General's Call to Action to Control Hypertension recognizes the  
285 prioritization of medication adherence as an evidence-based strategy to achieve improvements in  
286 hypertension control.<sup>5</sup> Moreover, the Call to Action highlights several interventions designed to  
287 empower and equip patients for better medication adherence. These interventions include self-  
288 measured blood pressure monitoring, tailored interventions by pharmacists, shared decision-  
289 making and motivational interviewing, reducing or eliminating cost sharing for medications,  
290 simplifying medication regimens, including the use of fixed-dose combination antihypertensives,  
291 and synchronizing refills for multiple medications to a single date.<sup>4,5,53</sup> Clinicians can implement  
292 or expand these interventions to support medication adherence in hypertension care.<sup>4,5</sup>  
293 Employers can play a pivotal role by supporting coverage of these interventions in employer-  
294 sponsored health plans or implementing medication adherence support services in the workplace.  
295 Employers may find that the reductions in costs due to averted health care utilization and  
296 productivity losses may exceed program costs.<sup>5,54</sup>

297         This study has several limitations. First, the MarketScan CCAE database is not a random  
298 sample, and the results may not be fully generalizable to all individuals with commercial  
299 insurance. Second, our results excluded individuals without insurance or those publicly insured,  
300 such as Medicare and Medicaid beneficiaries. If individuals with public insurance or without  
301 insurance exhibit different patterns in medication adherence, our results may not be universally  
302 applicable. Additionally, our study was restricted to individuals aged 18-64, limiting

303 generalizability to older ( $\geq 65$ ) or younger ( $\leq 17$ ) individuals. Third, our inclusion criteria required  
304 continuous enrollment, and individuals with gaps in insurance coverage or job disruptions during  
305 the period were not captured in our analysis. Fourth, while the MPR is a widely used method for  
306 measuring medication adherence, it may overestimate adherence for individuals who routinely  
307 refill medications early. MPR, based on drug claims data, captures prescription filling behavior  
308 but does not directly measure individuals' medication-taking behavior. Fifth, our study focused  
309 exclusively on adherence to antihypertensives, and did not capture adherence to medications for  
310 other conditions that may impact health, and subsequent health care utilization and labor  
311 productivity. Sixth, although we conducted a sensitivity analysis using the propensity score  
312 overlap weighting method, with all results remaining consistent, due to the limited information  
313 available in the claims database, we were unable to include other potential confounding factors  
314 such as individuals' education level, income, race, and poverty level. Seventh, the cross-sectional  
315 nature of our study may not capture longer-term effects of medication adherence. The observed  
316 higher associations on STD compared to LTD may be attributed to cross-sectional data;  
317 examining longitudinal data might reveal different associations with LTD. Seventh, STD costs  
318 were calculated using the same average hourly wages for working adults in the U.S. The  
319 decrease in the STD and LTD costs associated with medication adherence was notably higher for  
320 men and those living in urban areas. Given the higher hourly wages for men and urban residents,  
321 our estimates of productivity-related costs might be underestimated. As our estimates are derived  
322 from interactions of medication adherence, sex, and urban indicators, we could not account for  
323 different hourly wages by sex and urbanicity of residence.

324 Our study focused on outcomes available from administrative claims data and employer-  
325 provided payroll system; consequently, we could not look at individuals' health outcomes.

326 Future research endeavors could delve into the association of medication adherence with health  
327 outcomes, productivity-related outcomes, and other non-medical costs for individuals who are  
328 uninsured or publicly insured, extending the analysis over a longer time horizon. Additionally,  
329 our study focused solely on pre-COVID-19 pandemic periods, while future studies might  
330 broaden the scope to include pandemic periods when medication adherence may have been  
331 impacted by interruptions and delays in healthcare services.<sup>55</sup>

332

### 333 **CONCLUSIONS**

334 Our study identified the associations of antihypertensive medication adherence with total  
335 medical costs, health care utilization, and labor productivity, including number of sick absences,  
336 STD, and LTD. Medication adherence was associated with fewer ED visits and inpatient  
337 admissions, lower total medical costs, and fewer sick absences, STD, and LTD. These findings  
338 highlighting not only the potential benefits of medication adherence in reducing medical costs  
339 but also improving productivity-related outcomes. The results emphasize the potential for  
340 implementing and expanding programs to support medication adherence among individuals with  
341 hypertension covered by commercial insurance.



342 **REFERENCES**

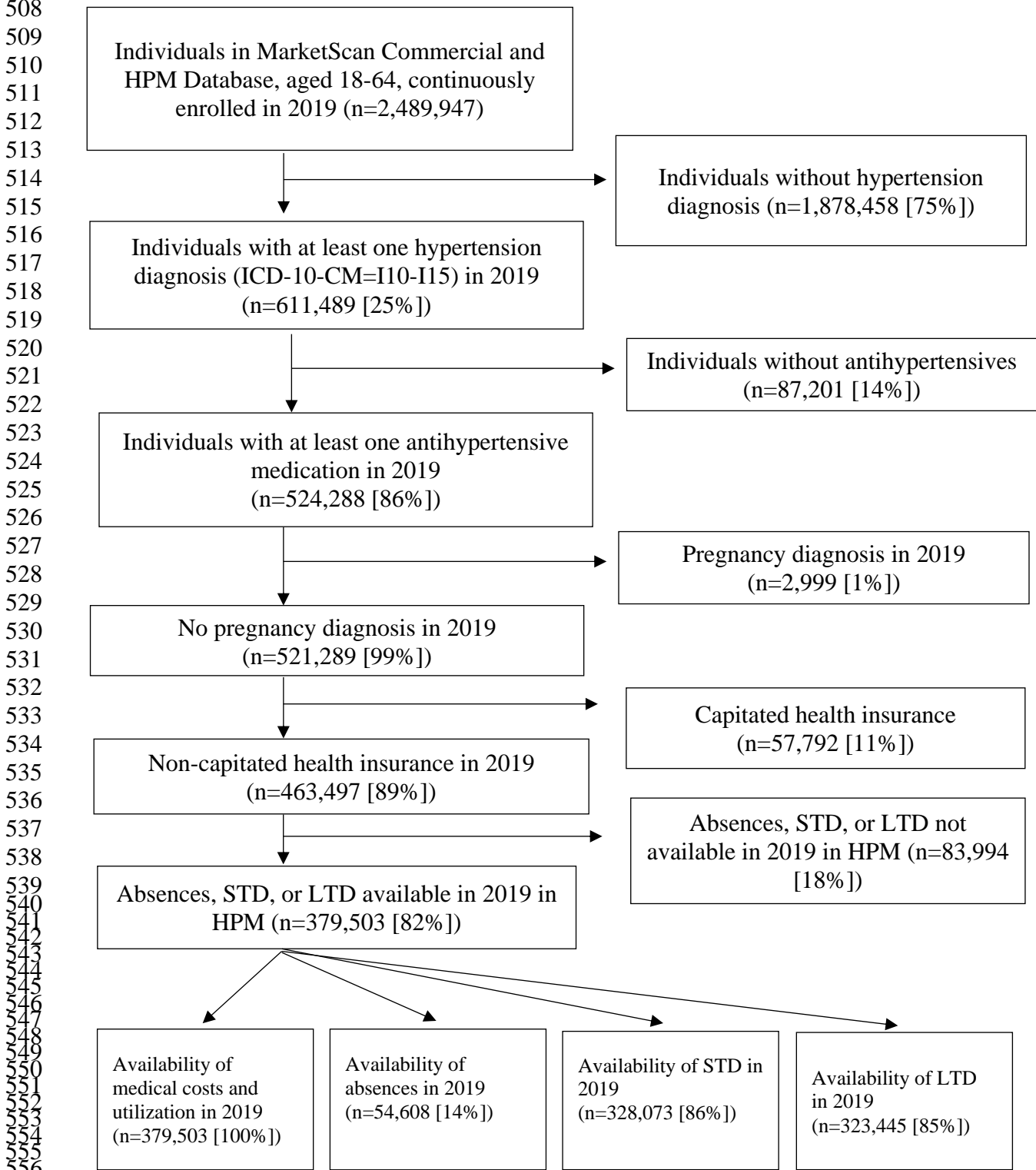
- 343
- 344 1. National Center for Health Statistics. Multiple Cause of Death 2018-2021 on CDC  
345 WONDER Database. Accessed June 2, 2023. <https://wonder.cdc.gov/mcd.html>
  - 346 2. Centers for Disease Control and Prevention. Hypertension Cascade: Hypertension  
347 Prevalence, Treatment and Control Estimates Among US Adults Aged 18 Years and Older  
348 Applying the Criteria From the American College of Cardiology and American Heart  
349 Association's 2017 Hypertension Guideline—NHANES 2017–2020. Centers for Disease Control  
350 and Prevention. Updated May 12, 2023. Accessed June 2, 2023.  
351 <https://millionhearts.hhs.gov/data-reports/hypertension-prevalence.html>
  - 352 3. Ho PM, Bryson CL, Rumsfeld JS. Medication adherence: its importance in  
353 cardiovascular outcomes. *Circulation*. Jun 16 2009;119(23):3028-35.  
354 doi:10.1161/CIRCULATIONAHA.108.768986
  - 355 4. Choudhry NK, Kronish IM, Vongpatanasin W, et al. Medication Adherence and Blood  
356 Pressure Control: A Scientific Statement From the American Heart Association. *Hypertension*.  
357 Jan 2022;79(1):e1-e14. doi:10.1161/HYP.000000000000203
  - 358 5. U.S. Department of Health and Human Services. *The Surgeon General's Call to Action to*  
359 *Control Hypertension*. U.S. Department of Health and Human Services, Office of the Surgeon  
360 General; 2020.
  - 361 6. Pina IL, Di Palo KE, Brown MT, et al. Medication adherence: Importance, issues and  
362 policy: A policy statement from the American Heart Association. *Prog Cardiovasc Dis*. Jan-Feb  
363 2021;64:111-120. doi:10.1016/j.pcad.2020.08.003
  - 364 7. Lee HJ, Jang SI, Park EC. Effect of adherence to antihypertensive medication on stroke  
365 incidence in patients with hypertension: a population-based retrospective cohort study. *BMJ*  
366 *Open*. Jul 2 2017;7(6):e014486. doi:10.1136/bmjopen-2016-014486
  - 367 8. Herttua K, Tabak AG, Martikainen P, Vahtera J, Kivimaki M. Adherence to  
368 antihypertensive therapy prior to the first presentation of stroke in hypertensive adults:  
369 population-based study. *Eur Heart J*. Oct 2013;34(38):2933-9. doi:10.1093/eurheartj/eh219
  - 370 9. Kettani FZ, Dragomir A, Cote R, et al. Impact of a better adherence to antihypertensive  
371 agents on cerebrovascular disease for primary prevention. *Stroke*. Jan 2009;40(1):213-20.  
372 doi:10.1161/STROKEAHA.108.522193
  - 373 10. Bailey JE, Wan JY, Tang J, Ghani MA, Cushman WC. Antihypertensive Medication  
374 Adherence, Ambulatory Visits, and Risk of Stroke and Death. *Journal of General Internal*  
375 *Medicine*. 2010;25(6):495-503. doi:10.1007/s11606-009-1240-1
  - 376 11. Shin S, Song H, Oh S-K, Choi KE, Kim H, Jang S. Effect of antihypertensive medication  
377 adherence on hospitalization for cardiovascular disease and mortality in hypertensive patients.  
378 *Hypertension Research*. 2013/11/01 2013;36(11):1000-1005. doi:10.1038/hr.2013.85
  - 379 12. Degli Esposti L. Adherence to antihypertensive medications and health outcomes among  
380 newly treated hypertensive patients. *ClinicoEconomics and Outcomes Research*.  
381 2011;doi:10.2147/ceor.S15619
  - 382 13. Wu PH, Yang CY, Yao ZL, Lin WZ, Wu LW, Chang CC. Relationship of Blood  
383 Pressure Control and Hospitalization Risk to Medication Adherence Among Patients With  
384 Hypertension in Taiwan. *American Journal of Hypertension*. 2010;23(2):155-160.  
385 doi:10.1038/ajh.2009.210

- 386 14. Mazzaglia G, Ambrosioni E, Alacqua M, et al. Adherence to Antihypertensive  
387 Medications and Cardiovascular Morbidity Among Newly Diagnosed Hypertensive Patients.  
388 *Circulation*. 2009;120(16):1598-1605. doi:10.1161/circulationaha.108.830299
- 389 15. Chang TE, Ritchey MD, Park S, et al. National Rates of Nonadherence to  
390 Antihypertensive Medications Among Insured Adults With Hypertension, 2015. *Hypertension*.  
391 12 2019;74(6):1324-1332. doi:<https://dx.doi.org/10.1161/HYPERTENSIONAHA.119.13616>
- 392 16. Cutler RL, Fernandez-Llimos F, Frommer M, Benrimoj C, Garcia-Cardenas V. Economic  
393 impact of medication non-adherence by disease groups: a systematic review. *BMJ Open*. Jan 21  
394 2018;8(1):e016982. doi:10.1136/bmjopen-2017-016982
- 395 17. Yang Z, Howard DH, Will J, Loustalot F, Ritchey M, Roy K. Association of  
396 antihypertensive medication adherence with healthcare use and Medicaid expenditures for acute  
397 cardiovascular events. *Med Care*. 2016;54(5):504-511.
- 398 18. Baker-Goering MM, Howard DH, Will JC, Beeler Asay GR, Roy K. Association  
399 Between Self-Reported Hypertension and Antihypertensive Medication Use and Cardiovascular  
400 Disease-Related Events and Expenditures Among Patients Diagnosed With Hypertension. *Public*  
401 *Health Rep*. Sep/Oct 2019;134(5):493-501. doi:10.1177/0033354919864363
- 402 19. Pittman DG, Tao Z, Chen W, Stettin GD. Antihypertensive medication adherence and  
403 subsequent healthcare utilization and costs. *The American journal of managed care*. 2010/08//  
404 2010;16(8):568-576.
- 405 20. Roebuck MC, Kaestner RJ, Dougherty JS. Impact of Medication Adherence on Health  
406 Services Utilization in Medicaid. Research Support, Non-U.S. Gov't. *Med Care*. 03  
407 2018;56(3):266-273. doi:<https://dx.doi.org/10.1097/MLR.0000000000000870>
- 408 21. Dillon P, Smith SM, Gallagher P, Cousins G. The association between pharmacy refill-  
409 adherence metrics and healthcare utilisation: a prospective cohort study of older hypertensive  
410 adults. *Int J Pharm Pract*. 2019;27(5):459-467. doi:10.1111/ijpp.12539
- 411 22. Lu ZK, Xiong X, Brown J, Horras A, Yuan J, Li M. Impact of cost-related medication  
412 nonadherence on economic burdens, productivity loss, and functional abilities: management of  
413 cancer survivors in Medicare. *Front Pharmacol*. 2021;12:706289.
- 414 23. Joshi AV, Madhavan SS, Ambegaonkar A, Smith M, Scott V, Dedhia H. Association of  
415 medication adherence with workplace productivity and health-related quality of life in patients  
416 with asthma. *J Asthma*. 2006;43(7):521-526.
- 417 24. Ruppap TM, Cooper PS, Mehr DR, Delgado JM, Dunbar-Jacob JM. Medication  
418 adherence interventions improve heart failure mortality and readmission rates: systematic review  
419 and meta-analysis of controlled trials. *J Am Heart Assoc*. 2016;5(6):e002606.
- 420 25. Kim S, Shin DW, Yun JM, et al. Medication adherence and the risk of cardiovascular  
421 mortality and hospitalization among patients with newly prescribed antihypertensive medications.  
422 *Hypertension*. 2016;67(3):506-512.
- 423 26. MacLeod KE, Ye Z, Donald B, Wang G. A literature review of productivity loss  
424 associated with hypertension in the United States. *Population Health Management*.  
425 2022;25(3):297-308.
- 426 27. Carls GS, Roebuck MC, Brennan TA, Slezak JA, Matlin OS, Gibson TB. Impact of  
427 medication adherence on absenteeism and short-term disability for five chronic diseases.  
428 Research Support, Non-U.S. Gov't. *J Occup Environ Med*. Jul 2012;54(7):792-805.  
429 doi:<https://dx.doi.org/10.1097/JOM.0b013e31825463e9>

- 430 28. Unmuessig V, Fishman PA, Vrijhoef HJ, Elissen AM, Grossman DC. Association of  
431 controlled and uncontrolled hypertension with workplace productivity. *The Journal of Clinical*  
432 *Hypertension*. 2016;18(3):217-222.
- 433 29. Wagner S, Lau H, Frech-Tamas F, Gupta S. Impact of medication adherence on work  
434 productivity in hypertension. *Am J Pharm Benefits*. 2012;4(4):e88-e96.
- 435 30. Data from: Truven Health MarketScan® Research Databases.  
436 <https://marketscan.truvenhealth.com/marketscanportal> Accessed March 9, 2023.
- 437 31. Canfield SL, Zuckerman A, Anguiano RH, et al. Navigating the wild west of medication  
438 adherence reporting in specialty pharmacy. *J Manag Care Spec Pharm*. 2019;25(10):1073-1077.
- 439 32. Park J, Bigman E, Zhang P. Productivity Loss and Medical Costs Associated With Type  
440 2 Diabetes Among Employees Aged 18–64 Years With Large Employer-Sponsored Insurance.  
441 *Diabetes Care*. 2022;45(11):2553-2560.
- 442 33. Settupane RA, Kreindler JL, Chung Y, Tkacz J. Evaluating direct costs and productivity  
443 losses of patients with asthma receiving GINA 4/5 therapy in the United States. *Annals of*  
444 *Allergy, Asthma & Immunology*. 2019;123(6):564-572. e3.
- 445 34. Quan H, Sundararajan V, Halfon P, et al. Coding algorithms for defining comorbidities in  
446 ICD-9-CM and ICD-10 administrative data. *Med Care*. 2005:1130-1139.
- 447 35. Thomas LE, Li F, Pencina MJ. Overlap weighting: A propensity score method that  
448 mimics attributes of a randomized clinical trial. *Jama*. Jun 16 2020;323(23):2417-2418.  
449 doi:10.1001/jama.2020.7819
- 450 36. Li F, Thomas LE, Li F. Addressing extreme propensity scores via the overlap weights.  
451 *Am J Epidemiol*. Jan 1 2019;188(1):250-257. doi:10.1093/aje/kwy201
- 452 37. Li F, Morgan KL, Zaslavsky AM. Balancing covariates via propensity score weighting.  
453 *Journal of the American Statistical Association*. 2018-01-02 2018;113(521):390-400.  
454 doi:10.1080/01621459.2016.1260466
- 455 38. Mehta N, Kalra A, Nowacki AS, et al. Association of use of Angiotensin-Converting  
456 Enzyme Inhibitors and Angiotensin II Receptor Blockers with testing positive for Coronavirus  
457 disease 2019 (COVID-19). *JAMA Cardiol*. Sep 1 2020;5(9):1020-1026.  
458 doi:10.1001/jamacardio.2020.1855
- 459 39. Imbens GW, Rubin DB. *Causal inference in statistics, social, and biomedical sciences*.  
460 Cambridge University Press; 2015.
- 461 40. Moore R, Brand JE, Shinkre T. ITPSCORE: Stata module to implement iterative  
462 propensity score logistic regression model search procedure. 2021;
- 463 41. Gifford B, Geppert P, Zayance R, Lin R. The Impact Of Medication Adherence On  
464 Workplace Productivity Outcomes: A Review Of The Scientific Evidence And Example For  
465 Calculating Savings From Improved Adherence. Integrated Benefits Institute. Aug 2018.  
466 [https://f.hubspotusercontent10.net/hubfs/8926463/Resource%20Assets/Research/Medication-](https://f.hubspotusercontent10.net/hubfs/8926463/Resource%20Assets/Research/Medication-Aherence-Productivity.pdf)  
467 [Aherence-Productivity.pdf](https://f.hubspotusercontent10.net/hubfs/8926463/Resource%20Assets/Research/Medication-Aherence-Productivity.pdf) Accessed September 14, 2023.
- 468 42. Terman SW, Burke JF. Use of item response theory to investigate disability-related  
469 questions in the National Health and Nutrition Examination Survey. *SAGE Open Med*. 2021;9(no  
470 pagination)doi:<https://dx.doi.org/10.1177/20503121211012253>
- 471 43. Wilder ME, Kulie P, Jensen C, et al. The impact of social determinants of health on  
472 medication adherence: a systematic review and meta-analysis. *Journal of general internal*  
473 *medicine*. 2021;36:1359-1370.
- 474 44. Hensley C, Heaton PC, Kahn RS, Luder HR, Frede SM, Beck AF. Poverty, transportation  
475 access, and medication nonadherence. *Pediatrics*. 2018;141(4)

- 476 45. Davis CI, Montgomery AE, Dichter ME, Taylor LD, Blosnich JR. Social determinants  
477 and emergency department utilization: findings from the veterans health administration. *The*  
478 *American Journal of Emergency Medicine*. 2020;38(9):1904-1909.
- 479 46. Manteuffel M, Williams S, Chen W, Verbrugge RR, Pittman DG, Steinkellner A.  
480 Influence of patient sex and gender on medication use, adherence, and prescribing alignment  
481 with guidelines. *J Womens Health (Larchmt)*. 2014;23(2):112-119.
- 482 47. Venditti V, Bleve E, Morano S, Filardi T. Gender-related factors in medication adherence  
483 for metabolic and cardiovascular health. *Metabolites*. 2023;13(10):1087.
- 484 48. Whitley HP, Lindsey W. Sex-based differences in drug activity. *American family*  
485 *physician*. 2009;80(11):1254-1258.
- 486 49. Zucker I, Prendergast BJ. Sex differences in pharmacokinetics predict adverse drug  
487 reactions in women. *Biology of sex differences*. 2020;11(1):1-14.
- 488 50. Weeks DL, Willson MN, Greer CL. Differences in complexity of discharge medication  
489 regimens between men and women discharged from acute care to home following total joint  
490 arthroplasty. *Hospital Pharmacy*. 2012;47(3):197-205.
- 491 51. Brett KM, Burt CW. Utilization of ambulatory medical care by women: United States,  
492 1997-1998. 2001;
- 493 52. Krivoy A, Balicer RD, Feldman B, et al. The impact of age and gender on adherence to  
494 antidepressants: a 4-year population-based cohort study. *Psychopharmacology*. 2015;232:3385-  
495 3390.
- 496 53. Jacob V, Reynolds JA, Chattopadhyay SK, et al. Pharmacist Interventions for Medication  
497 Adherence: Community Guide Economic Reviews for Cardiovascular Disease. *Am J Prev Med*.  
498 Mar 2022;62(3):e202-e222. doi:10.1016/j.amepre.2021.08.021
- 499 54. Centers for Disease Control and Prevention. *How to Promote Heart Disease and Stroke*  
500 *Prevention in the Workplace: A Guide for Employers, Program Coordinators, and Health*  
501 *Benefit Designers*. 2022.
- 502 55. Czeisler MÉ, Marynak K, Clarke KE, et al. Delay or avoidance of medical care because  
503 of COVID-19–related concerns—United States, June 2020. *Morbidity and mortality weekly*  
504 *report*. 2020;69(36):1250.
- 505

506 **Figure 1. Study sample selection of individuals diagnosed with hypertension,**  
 507 **MarketScan® Commercial and Health and Product Management Database, 2019.**



558



559 **Table 1. Summary statistics of individuals with hypertension by medication adherence**  
 560 **status, MarketScan® Commercial Insurance, 2019<sup>a</sup>**

	All	Medication Adherence <sup>b</sup>	Medication Non-adherence	P-value
	N=379,503 (100%)	N=206,310 (54.4%)	N=173,193 (45.6%)	
Age, mean (SD)	51.1 (8.4)	52.5 (7.7)	49.4 (8.9)	<0.001
<b>Age groups, n (%)</b>				
18-34	18,480 (4.87%)	5,808 (2.82%)	12,672 (7.32%)	<0.001
35-44	61,732 (16.27%)	26,358 (12.78%)	35,374 (20.42%)	<0.001
45-54	142,361 (37.51%)	76,387 (37.03%)	65,974 (38.09%)	<0.001
55-64	156,930 (41.35%)	97,757 (47.38%)	59,173 (34.17%)	<0.001
Female, n (%)	128,245 (33.79%)	64,679 (31.35%)	63,566 (36.70%)	<0.001
Urban Residency, n (%)	341,292 (89.93%)	184,978 (89.66%)	156,314 (90.25%)	<0.001
<b>Census Region, n (%)</b>				
Northeast	52,646 (13.87%)	31,090 (15.07%)	21,556 (12.45%)	<0.001
Midwest	96,314 (25.38%)	54,545 (26.44%)	41,769 (24.12%)	<0.001
South	182,220 (48.02%)	94,087 (45.60%)	88,133 (50.89%)	<0.001
West	47,611 (12.55%)	26,286 (12.74%)	21,325 (12.31%)	<0.001
<b>Comorbidities, n (%)</b>				
Myocardial infarction	6,951 (1.83%)	3,468 (1.68%)	3,483 (2.01%)	<0.001
Congestive heart failure	7,549 (1.99%)	3,547 (1.72%)	4,002 (2.31%)	<0.001
Peripheral vascular disease	5,493 (1.45%)	2,980 (1.44%)	2,513 (1.45%)	0.87
Cerebrovascular disease	1,775 (0.47%)	749 (0.36%)	1,026 (0.59%)	<0.001
Dementia	49 (0.01%)	19 (0.01%)	30 (0.02%)	0.028
Chronic pulmonary disease	16,189 (4.27%)	8,117 (3.93%)	8,072 (4.66%)	<0.001
Rheumatic disease	3,981 (1.05%)	2,116 (1.03%)	1,865 (1.08%)	0.12
Peptic ulcer disease	719 (0.19%)	324 (0.16%)	395 (0.23%)	<0.001
Mild liver disease	6,196 (1.63%)	3,079 (1.49%)	3,117 (1.80%)	<0.001
Diabetes without chronic complication	69,362 (18.28%)	40,754 (19.75%)	28,608 (16.52%)	<0.001
Diabetes with chronic complication	15,073 (3.97%)	8,584 (4.16%)	6,489 (3.75%)	<0.001
Hemiplegia or paraplegia	802 (0.21%)	270 (0.13%)	532 (0.31%)	<0.001
Renal disease	9,818 (2.59%)	5,210 (2.53%)	4,608 (2.66%)	0.009
Any malignancy	10,373 (2.73%)	5,972 (2.89%)	4,401 (2.54%)	<0.001
Moderate or severe liver disease	468 (0.12%)	182 (0.09%)	286 (0.17%)	<0.001
Metastatic solid tumor	1,379 (0.36%)	657 (0.32%)	722 (0.42%)	<0.001
AIDS/HIV	1,256 (0.33%)	694 (0.34%)	562 (0.32%)	0.53
<b>Outcomes, mean (SD), \$</b>				
Total medical costs	14081.8 (40871.8)	12882.2 (32497.4)	15510.7 (48976.3)	<0.001
Total insurance medical payments	12425.0 (40176.8)	11250.1 (31776.9)	13824.5 (48275.8)	<0.001
Total individuals' out-of-pocket medical costs	1656.8 (1932.0)	1632.1 (1756.2)	1686.3 (2122.2)	<0.001
Sick absence costs	76.6 (807.9)	70.6 (754.9)	83.9 (866.9)	<0.001
STD costs	686.5 (3676.0)	533.8 (3143.7)	868.5 (4216.3)	<0.001
LTD costs	159.9 (4232.6)	120.3 (2766.5)	207.1 (5489.5)	<0.001
Num. of emergency department visits	0.34 (0.99)	0.25 (0.78)	0.46 (1.18)	<0.001
Num. of inpatient admissions	0.09 (0.41)	0.06 (0.32)	0.12 (0.49)	<0.001

Num. of outpatient visits	12.90 (16.05)	12.73 (15.29)	13.11 (16.90)	<0.001
Num. of pharmacy prescriptions	25.21 (20.05)	28.30 (20.78)	21.53 (18.49)	<0.001
Num. of sick absences	2.38 (9.25)	2.22 (8.70)	2.57 (9.85)	<0.001
Num. of STD	5.07 (25.15)	3.93 (21.49)	6.43 (28.88)	<0.001
Num. of LTD	1.40 (34.12)	1.06 (22.36)	1.80 (44.12)	<0.001
Num. of antihypertensive prescriptions	7.93 (6.42)	9.43 (6.80)	6.14 (5.42)	<0.001

561 Abbreviations: ED, emergency department; LTD, long-term disability; STD, short-term disability.

562 <sup>a</sup> The Wilcoxon nonparametric rank-sum test was used to test the differences in means for continuous variables, and  
563 the Pearson's Chi-square test was used to test differences in proportions for categorical variables by medication non-  
564 adherence to antihypertensives status.

565 <sup>b</sup> Adherence to antihypertensives if the average medication possession ratio (MPR) of the 7 Therapeutic Classes was  
566 greater than equal to 80%; otherwise, medication non-adherence.

567 **Table 2. Total medical costs (per individual) associated with adherence to antihypertensives in 2019<sup>a</sup>**

	All	Women	Men	Women vs. Men <sup>b</sup>	Urban	Rural	Urban vs. Rural <sup>b</sup>
<b>Total Medical Costs, \$</b>							
Medication non-adherence	19,210	20,488	18,558	1,930***	19,498	16,641	2,857***
	(18,643 - 19,778)	(19,870 - 21,107)	(17,957 - 19,160)	(1,474 - 2,386)	(18,907 - 20,089)	(15,977 - 17,306)	(2,221 - 3,493)
Medication adherence	17,770	18,837	17,225	1,611***	17,971	15,970	2,002***
	(17,238 - 18,301)	(18,265 - 19,408)	(16,663 - 17,787)	(1,205 - 2,017)	(17,419 - 18,523)	(15,373 - 16,566)	(1,454 - 2,550)
Difference	-1,441***	-1,652***	-1,333***	-319	-1,527***	-671.7	-855*
	(-1,709 - -1,172)	(-2,131 - -1,172)	(-1,650 - -1,016)	(-886 - 249)	(-1,813 - -1,241)	(-1,399 - 55.76)	(-1,633 - -77)
Observation	379,503	128,245	251,258	379,503	341,292	38,211	379,503

568 <sup>a</sup> A generalized linear model with a gamma distribution and log link was used. The average marginal effects with 95% confidence intervals (CI) were reported.  
 569 All models were adjusted for the patient's age, sex, urbanicity of residence, Census regions, and comorbidities. The differences and the 95% CI of the predicted  
 570 and average marginal effects by sex and urbanicity were calculated. All the outcomes are per individual.

571 <sup>b</sup> The differences with 95% CI in the predicted values and average marginal effects by sex (Women – Men) and urbanicity (Urban – Rural) were reported.  
 572 \*\*\* p<0.001, \*\* p<0.01, \* p<0.05



573 **Table 3. Health care utilization (per 1,000 individuals) associated with adherence to antihypertensives in 2019<sup>a</sup>**

	All	Women	Men	Women vs. Men <sup>b</sup>	Urban	Rural	Urban vs. Rural <sup>b</sup>
<b>Emergency Department Visits</b>							
Medication non-adherence	456	580	393	187***	457	449	7.6
	(451 - 462)	(570 - 591)	(387 - 399)	(176 - 199)	(451 - 463)	(433 - 465)	(-9.2 - 24.4)
Medication adherence	256	306	231	74.4***	255	266	-10.9*
	(253 - 260)	(299 - 312)	(228 - 235)	(67.4 - 81.3)	(252 - 259)	(257 - 276)	(-21.0 - -0.1)
Difference	-200***	-275***	-162***	-113***	-202***	-183***	-18.5
	(-206 - -194)	(-287 - -263)	(-168 - -155)	(-126 - -99.5)	(-208 - -195)	(-202 - -165)	(-38.1 - 1.1)
Observation	379,503	128,245	251,258	379,503	341,292	38,211	379,503
<b>Inpatient Admissions</b>							
Medication non-adherence	210	177	226	-49.5***	216	149	67.6***
	(199 - 220)	(169 - 185)	(214 - 239)	(-58.8 - -40.3)	(205 - 227)	(140 - 158)	(56.4 - 78.7)
Medication adherence	120	105	128	-22.9***	123	91.1	32.0***
	(114 - 126)	(99.6 - 110)	(120 - 135)	(-28.7 - -17.1)	(117 - 129)	(84.9 - 97.2)	(25.0 - 39.1)
Difference	-89.6***	-72.0***	-98.6***	26.6***	-93.2***	-57.7***	-35.5***
	(-95.5 - -83.7)	(-78.5 - -65.5)	(-106 - -91.1)	(17.9 - 35.3)	(-99.6 - -86.9)	(-67.7 - -47.7)	(-46.8 - -24.2)
Observation	379,503	128,245	251,258	379,503	341,292	38,211	379,503

574 Abbreviations: ED, emergency department.

575 <sup>a</sup> A negative binomial regression was used. All models were adjusted for the patient's age, sex, urbanicity of residence, Census regions, and comorbidities. We  
 576 reported the average marginal effects with a 95% confidence interval. The differences and the 95% CI of the predicted and average marginal effects by sex and  
 577 urbanicity were calculated. All the outcomes are per 1,000 individuals.

578 <sup>b</sup> The differences with 95% CI in the predicted values and average marginal effects by sex (Women – Men) and urbanicity (Urban – Rural) were reported.

579 **Table 4. Productivity losses (per 1,000 individuals) associated with adherence to antihypertensives in 2019<sup>a</sup>**

	All	Women	Men	Women vs. Men <sup>b</sup>	Urban	Rural	Urban vs. Rural <sup>b</sup>
<b>Number of Sick Absences</b>							
Medication non-adherence	308	329	297	-31.6***	299	385	-86.0***
	(300 - 316)	(316 - 341)	(288 - 306)	(-44.8 - -18.3)	(291 - 307)	(357 - 413)	(-114 - -57.9)
Medication adherence	288	306	279	-26.8***	284	323	-39.4***
	(281 - 295)	(294 - 318)	(271 - 286)	(-39.2 - -14.4)	(277 - 291)	(302 - 345)	(-61 - -17.8)
Difference	-19.8***	-22.9**	-18.2***	4.75	-15.1***	-61.7***	46.6**
	(-28.0 - -11.6)	(-38.7 - -7.2)	(-27.4 - -8.9)	(-13.3 - 22.8)	(-23.3 - -6.9)	(-96.1 - -27.3)	(11.3 - 81.9)
Observation	54,608	13,346	41,262	54,608	49,125	5,483	54,608
<b>Number of STD</b>							
Medication non-adherence	4,514	4,354	4,596	241**	4,548	4,211	337**
	(4,414 - 4,615)	(4,230 - 4,479)	(4,475 - 4,716)	(96.7 - 386)	(4,444 - 4,652)	(3,976 - 4,446)	(96.8 - 577)
Medication adherence	4,072	3,925	4,147	222**	4,086	3,950	137
	(3,978 - 4,166)	(3,799 - 4,052)	(4,036 - 4,259)	(75 - 369)	(3,988 - 4,184)	(3,731 - 4,168)	(-88.7 - 362)
Difference	-442***	-429***	-448***	-19.2	-462***	-262	-200
	(-548 - -335)	(-585 - -273)	(-586 - -311)	(-224 - 186)	(-575 - -349)	(-572 - 48.5)	(-529 - 128)
Observation	328,073	111,160	216,913	328,073	295,104	32,969	328,073
<b>Number of LTD</b>							
Medication non-adherence	1,508	1,233	1,648	415***	1,479	1,761	-281
	(1,319 - 1,697)	(1,045 - 1,421)	(1,412 - 1,884)	(173 - 657)	(1,289 - 1,669)	(1,243 - 2,278)	(-794 - 232)
Medication adherence	1,624	1,445	1,715	269	1,596	1,870	-274
	(1,414 - 1,833)	(1,187 - 1,704)	(1,460 - 1,970)	(-43.4 - 582)	(1,382 - 1,810)	(1,314 - 2,427)	(-836 - 287)
Difference	116	212	66.8	-146	117	110	6.8
	(-94.2 - 326)	(-64.2 - 489)	(-215 - 348)	(-537 - 245)	(-102 - 335)	(-618 - 838)	(-752 - 766)
Observation	323,445	110,894	212,551	323,445	290,853	32,592	323,445

580 Abbreviations: LTD, long-term disability; STD, short-term disability.

581 <sup>a</sup> An exponential hurdle model was used. All models were adjusted for the patient's age, sex, urbanicity of residence, Census regions, and comorbidities. We  
 582 reported the average marginal effects with a 95% confidence interval. The differences and the 95% CI of the predicted and average marginal effects by sex and  
 583 urbanicity were calculated. All the outcomes are per 1,000 individuals.

584 <sup>b</sup> The differences with 95% CI in the predicted values and average marginal effects by sex (Women – Men) and urbanicity (Urban – Rural) were reported.

585 **Supplemental materials**

586 **Appendix Table 1. Antihypertensives by therapeutic class**

Therapeutic Class	Antihypertensive Medications
ACE inhibitor	Benazepril Bepridil Captopril Enalapril Fosinopril Lisinopril Moexipril Perindopril Quinapril Ramipril Trandolapril
Angiotensin receptor blocker	Azilsartan Candesartan Eprosartan Irbesartan Losartan Olmesartan Telmisartan Valsartan
Beta blocker	Acebutolol Atenolol Betaxolol Bisoprolol Carvedilol Labetalol Metoprolol succinate Metoprolol tartrate Nadolol Nebivolol Pindolol Propranolol
Calcium channel blocker	Amlodipine Diltiazem Felodipine Isradipine Levamlodipine Nicardipine Nifedipine Nisoldipine Verapamil
Diuretic	Amiloride Bumetanide Chlorothiazide

	Chlorthalidone Furosemide Hydrochlorothiazide Indapamide Methyclothiazide Metolazone Torsemide Triamterene
Other antihypertensives	Clonidine Doxazosin Eplerenone Guanabenz Guanfacine Hydralazine Methyldopa Minoxidil Prazosin Spironolactone Terazosin
Renin-angiotensin system antagonists*	Aliskiren Azilsartan Benazepril Bepidil Candesartan Captopril Enalapril Eprosartan Fosinopril Irbesartan Lisinopril Losartan Moexipril Olmesartan Perindopril Quinapril Ramipril Telmisartan Trandolapril Valsartan

587 **Appendix Table 2. The ICD-10-CM, DRG, and ICD-10-PCS Procedure codes for pregnancy**

	ICD-10-CM	DRG	ICD-10-PCS Procedure
Pregnancy	O00-O99, O9A1-O9A5, Z33, Z34, Z36, Z37, Z3201, Z322, Z39, F53, A34	765, 766, 767, 768, 769, 770, 771, 772, 773, 775, 776, 777, 779, 780, 781, 782	10A0, 10D00Z0, 10D00Z1, 10D00Z2, 10D07Z3, 10D07Z4, 10D07Z5, 10D07Z6, 10D07Z7, 10D07Z8, 10E0XZZ

588

589 **Appendix Table 3. Productivity costs (per individual) associated with adherence to antihypertensives in 2019.<sup>a</sup>**

	All	Women	Men	Women vs. Men <sup>b</sup>	Urban	Rural	Urban vs. Rural <sup>b</sup>
<b>Sick Absence Costs, \$</b>							
Medication non-adherence	83.08	76.23	86.57	-10.34**	82.14	91.40	-9.261
	(79.11 - 87.05)	(69.97 - 82.49)	(81.64 - 91.50)	(-18.13 - -2.55)	(78.11 - 86.17)	(76.01 - 106.80)	(-25.09 - 6.57)
Medication adherence	71.92	63.93	75.99	-12.06***	71.76	73.35	-1.589
	(68.51 - 75.33)	(58.39 - 69.48)	(71.85 - 80.14)	(-18.79 - -5.33)	(68.23 - 75.29)	(62.09 - 84.61)	(-13.28 - 10.10)
Difference	-11.16***	-12.29**	-10.58***	-1.718	-10.38***	-18.06	7.67
	(-16.13 - -6.18)	(-20.49 - -4.10)	(-16.81 - -4.35)	(-12.00 - 8.57)	(-15.48 - -5.29)	(-37.06 - 0.95)	(-12.00 - 27.34)
Observation	54,608	13,346	41,262	54,608	49,125	5,483	54,608
<b>STD Costs, \$</b>							
Medication non-adherence	842.9	953.1	786.6	166.5***	854.7	737.0	117.7***
	(823.8 - 861.9)	(921.0 - 985.3)	(763.1 - 810.1)	(126.8 - 206.2)	(834.5 - 875.0)	(681.3 - 792.7)	(58.52 - 176.9)
Medication adherence	551.8	614.5	519.7	94.80***	546.2	601.3	-55.04*
	(537.8 - 565.7)	(589.7 - 639.4)	(503.1 - 536.4)	(65.13 - 124.5)	(531.6 - 560.8)	(556.0 - 646.5)	(-102.4 - -7.653)
Difference	-291.1***	-338.6***	-266.9***	-71.70**	-308.5***	-135.8***	-172.8***
	(-314.6 - -267.7)	(-379.1 - -298.1)	(-295.6 - -238.2)	(-121.2 - -22.17)	(-333.3 - -283.7)	(-207.5 - -64.03)	(-248.6 - -96.93)
Observation	328,073	111,160	216,913	328,073	295,104	32,969	328,073
<b>LTD Costs, \$</b>							
Medication non-adherence	195.7	243.5	171.2	72.31**	199.4	162.1	37.29
	(174.1 - 217.2)	(204.3 - 282.8)	(145.6 - 196.9)	(25.41 - 119.2)	(176.4 - 222.4)	(101.0 - 223.2)	(-27.93 - 102.5)
Medication adherence	126.3	143.5	117.6	25.87	123.1	155.7	-32.61
	(109.9 - 142.7)	(113.6 - 173.3)	(98.12 - 137.1)	(-9.763 - 61.50)	(106.1 - 140.1)	(96.99 - 214.3)	(-93.71 - 28.49)
Difference	-69.32***	-100.1***	-53.63**	-46.45	-76.36***	-6.459	-69.90
	(-96.51 - -42.13)	(-149.4 - -50.72)	(-85.94 - -21.32)	(-105.3 - 12.41)	(-105.0 - 47.69)	(-91.34 - 78.43)	(-159.4 - 19.60)

Observation	323,445	110,894	212,551	323,445	290,853	32,592	323,445
-------------	---------	---------	---------	---------	---------	--------	---------

590 <sup>a</sup> A two-part model was used. The first part was a logit model, and the second part was a generalized linear model with a gamma distribution and log link. The  
591 average marginal effects with a 95% confidence interval were reported. All models were adjusted for the patient's age, sex, urbanicity of residence, Census  
592 regions, and comorbidities. The differences and the 95% CI of the predicted and average marginal effects by sex and urbanicity were calculated. Productivity  
593 costs were calculated by multiplying the number of hours absences, obtained from the number of days absences times 8 hours, and absences related to STD and  
594 LTD by the average hourly wage. Adjustments for absences associated with short-term (70% of hourly wage) and long-term disability (60% of hourly wage)  
595 were made. All the outcomes are per individual.

596 <sup>b</sup> The differences with 95% CI in the predicted values and average marginal effects by sex (Women – Men) and urbanicity (Urban – Rural) were reported.  
597 \*\*\* p<0.001, \*\* p<0.01, \* p<0.05

598 **Appendix Table 4. Logistic regression estimates for all covariates used to calculate propensity scores<sup>a</sup>**

VARIABLES	Coefficient	Std. err.	z	P>z	[95% conf. interval]	
Age 55–64	1.24	0.02	68.96	<0.001	1.21	1.28
Age 45–54	0.90	0.02	50.48	<0.001	0.87	0.94
Female	-0.27	0.03	-9.25	<0.001	-0.32	-0.21
Age 35–44	0.49	0.02	27.07	<0.001	0.45	0.52
South	-0.32	0.02	-13.78	<0.001	-0.37	-0.28
Congestive heart failure	-0.26	0.03	-9.23	<0.001	-0.32	-0.21
Diabetes without chronic complications	0.20	0.01	21.27	<0.001	0.18	0.22
Hemiplegia or paraplegia	-0.70	0.08	-8.76	<0.001	-0.86	-0.55
Myocardial infarction	-0.16	0.03	-4.67	<0.001	-0.22	-0.09
Chronic pulmonary disease	-0.22	0.02	-10.10	<0.001	-0.27	-0.18
West	-0.16	0.02	-9.21	<0.001	-0.19	-0.13
Cerebrovascular disease	-0.44	0.05	-8.03	<0.001	-0.54	-0.33
Mild liver disease	-0.09	0.03	-2.69	0.01	-0.15	-0.02
Metastatic solid tumor	-0.37	0.06	-6.18	<0.001	-0.48	-0.25
Moderate or severe liver disease	0.31	0.36	0.87	0.39	-0.39	1.01
Midwest	-0.07	0.01	-5.78	<0.001	-0.09	-0.04
Urban	-0.09	0.02	-4.94	<0.001	-0.12	-0.05
Peptic ulcer	0.35	0.25	1.36	0.17	-0.15	0.84
Renal disease	-0.12	0.04	-3.52	<0.001	-0.19	-0.05
Any malignancy	0.08	0.04	2.10	0.04	0.01	0.16
Diabetes with chronic complications	0.22	0.04	6.03	<0.001	0.15	0.29
HIV/AIDS	0.22	0.07	3.23	<0.001	0.09	0.36
Auto Interaction: diabetes without chronic complications*diabetes with chronic complications	-0.38	0.04	-9.18	<0.001	-0.46	-0.30
Auto Interaction: females*west region	0.13	0.02	5.50	<0.001	0.08	0.17
Auto Interaction: females*age group 55	0.12	0.02	6.44	<0.001	0.09	0.16
Auto Interaction: females*any malignancy	0.15	0.04	3.64	<0.001	0.07	0.24
Auto Interaction: south*urban	0.09	0.02	4.23	<0.001	0.05	0.14



Auto Interaction: south*chronic pulmonary disease	0.14	0.03	4.08	<0.001	0.07	0.20
Auto Interaction: female*south	-0.05	0.02	-3.33	<0.001	-0.08	-0.02
Auto Interaction: congestive heart failure*renal disease	-0.22	0.07	-3.26	<0.001	-0.36	-0.09
Auto Interaction: congestive heart failure*myocardial infarction	-0.22	0.07	-3.35	<0.001	-0.35	-0.09
Auto Interaction: mild liver disease*any malignancy	-0.30	0.09	-3.18	<0.001	-0.48	-0.11
Auto Interaction: west*diabetes with complications	0.18	0.05	3.56	<0.001	0.08	0.28
Auto Interaction: age group 45*female	0.06	0.02	2.99	<0.001	0.02	0.10
Auto Interaction: urban*peptic ulcer	-0.73	0.27	-2.73	0.01	-1.25	-0.21
Auto Interaction: age group 35*diabetes with complications	-0.18	0.06	-3.26	0.00	-0.29	-0.07
Auto Interaction: age group 55*west region	-0.06	0.02	-2.83	0.01	-0.10	-0.02
Auto Interaction: female*HIV/AIDS	-0.48	0.17	-2.74	0.01	-0.82	-0.14
Auto Interaction: mild liver disease*midwest region	-0.15	0.06	-2.51	0.01	-0.27	-0.03
Auto Interaction: moderate or severe liver disease*urban	-0.90	0.37	-2.43	0.02	-1.63	-0.17
Auto Interaction: south*renal disease	0.10	0.04	2.39	0.02	0.02	0.18
Auto Interaction: renal disease*any malignancy	-0.19	0.09	-2.18	0.03	-0.35	-0.02
Auto Interaction: age group 35*cerebrovascular disease	0.39	0.17	2.28	0.02	0.05	0.72
Auto Interaction: female*renal disease	0.11	0.05	2.32	0.02	0.02	0.20
Auto Interaction: diabetes without complications*myocardial infarction	-0.18	0.06	-2.89	<0.001	-0.29	-0.06
Auto Interaction: myocardial infarction*diabetes with complications	0.24	0.09	2.52	0.01	0.05	0.42
Auto Interaction: age group 35* HIV/AIDS	-0.32	0.15	-2.14	0.03	-0.61	-0.03
Auto Interaction: age group 35*renal disease	0.13	0.06	2.11	0.04	0.01	0.26
Auto Interaction: female*myocardial infarction	-0.13	0.06	-2.06	0.04	-0.25	-0.01
Auto Interaction: age group 55*any malignancy	-0.09	0.04	-2.03	0.04	-0.17	0.00
Auto Interaction: female*urban	-0.05	0.02	-1.96	0.05	-0.10	0.00
Constant	-0.45	0.03	-17.86	<0.001	-0.50	-0.40

599 <sup>a</sup> This table shows logistic regression coefficients, standard error, z score, P-values, and confidence intervals for all covariates used in the final model obtained by  
600 applying iterative propensity score calculation method suggested by Imbens and Rubin, 2015.

601 **Appendix Table 5. Propensity score estimated from logistic regression and calculated overlap weights for samples with**  
 602 **medication adherence and medication non-adherence<sup>a</sup>**

	N	Q1	Q2 (median)	Q3	Inter quartile range (IQR)	Mean	SD	Min	Max
<i>Propensity score</i>									
Medication non-adherence	173189	0.457	0.535	0.611	0.154	0.522	0.105	0.079	0.757
Medication adherence	206310	0.518	0.575	0.620	0.102	0.562	0.090	0.117	0.758
Total	379499	0.472	0.559	0.618	0.146	0.544	0.099	0.079	0.758
<i>Overlap weights</i>									
Medication non-adherence	173189	0.457	0.535	0.611	0.154	0.522	0.105	0.079	0.757
Medication adherence	206310	0.380	0.425	0.482	0.102	0.438	0.090	0.242	0.883
Total	379499	0.389	0.465	0.559	0.171	0.477	0.106	0.079	0.883

603 <sup>a</sup> This table shows the estimated propensity scores (logit) obtained from the logistic regression (shown in Appendix Table 4) and  
 604 corresponding overlap weights for overall sample and for samples with medication adherence and non-adherence.

605 **Appendix Table 6. Comparing unweighted and overlap-weighted samples to assess balance on covariates used in the main**  
 606 **model<sup>a</sup>**

	Unweighted/Original Sample				Weighted Sample			
	Medication adherence	Medication non-adherence	Standardized diff.	P value	Medication adherence	Medication non-adherence	Standardized diff.	P value
<b>Age groups</b>								
18-34	2.80%	7.30%	-20.6%	<0.001	4.4%	4.4%	0.0%	1
35-44	12.80%	20.40%	-20.7%	<0.001	16.5%	16.5%	0.0%	1
45-54	37.00%	38.10%	-2.2%	<0.001	38.7%	38.7%	0.0%	1
55-64	47.40%	34.20%	27.1%	<0.001	40.4%	40.4%	0.0%	1
<b>Female</b>	31.40%	36.70%	-11.3%	<0.001	34.0%	34.0%	0.0%	1
<b>Urban Residency</b>	89.70%	90.30%	-2.0%	<0.001	90.0%	90.0%	0.0%	1
Northeast	15.10%	12.40%	7.6%	<0.001	13.7%	13.6%	0.3%	0.311
Midwest	26.40%	24.10%	5.3%	<0.001	25.2%	25.2%	0.0%	1
South	45.60%	50.90%	-10.6%	<0.001	48.3%	48.3%	0.0%	1
West	12.70%	12.30%	1.3%	<0.001	12.6%	12.6%	0.0%	1
<b>Comorbidities</b>								
Myocardial infarction	2.0%	2.0%	-2.5%	<0.001	2.0%	2.0%	0.0%	1
Congestive heart failure	2.0%	2.0%	-4.2%	<0.001	2.0%	2.0%	0.0%	1
Peripheral vascular disease	1.0%	1.0%	-0.1%	0.866	1.0%	1.0%	-0.1%	0.66
Cerebrovascular disease	0.0%	1.0%	-3.3%	<0.001	0.0%	0.0%	0.0%	1
Dementia	0.0%	0.0%	-0.7%	0.028	0.0%	0.0%	-0.8%	0.016
Chronic pulmonary disease	4.0%	5.0%	-3.6%	<0.001	4.0%	4.0%	0.0%	1
Rheumatic disease	1.0%	1.0%	-0.5%	0.123	1.0%	1.0%	0.0%	0.932
Peptic ulcer disease	0.0%	0.0%	-1.6%	<0.001	0.0%	0.0%	0.0%	1
Mild liver disease	1.0%	2.0%	-2.4%	<0.001	2.0%	2.0%	0.0%	1
Diabetes without chronic complication	20.0%	17.0%	8.4%	<0.001	18.0%	18.0%	0.0%	1
Diabetes with chronic complication	4.0%	4.0%	2.1%	<0.001	4.0%	4.0%	0.0%	1

Hemiplegia or paraplegia	0.0%	0.0%	-3.8%	<0.001	0.0%	0.0%	0.0%	1
Renal disease	3.0%	3.0%	-0.9%	0.009	3.0%	3.0%	0.0%	1
Any malignancy	3.0%	3.0%	2.2%	<0.001	3.0%	3.0%	0.0%	1
Moderate or severe liver disease	0.0%	0.0%	-2.2%	<0.001	0.0%	0.0%	0.0%	1
Metastatic solid tumor	0.0%	0.0%	-1.6%	<0.001	0.0%	0.0%	0.0%	1
HIV/AIDS	0.0%	0.0%	0.2%	0.525	0.0%	0.0%	0.0%	1

607 <sup>a</sup> This table shows standardized difference for means in unweighted (original) and overlap-weighted samples to assess balance between population with and  
608 without medication adherence. The associated standardized difference and p-values for overlap-weighted samples suggest that the sample is balanced on all  
609 covariates used in the model and indicate validity of overlap-weighting model to adjust for measured confounders.

610 **Appendix Table 7. Underlying medication adherence rates by sex and urbanicity (Unadjusted)<sup>a</sup>**

	<b>Male</b>	<b>Female</b>	<b><i>P-values</i></b>
	N=251,258	N=128,245	
<b>Medication adherence<sup>b</sup>, N (%)</b>	141,631 (56.37%)	64,679 (50.43%)	<0.001
	<b>Rural</b>	<b>Urban</b>	
	N=38,211	N=341,292	
<b>Medication adherence, N (%)</b>	21,332 (55.83%)	184,978 (54.20%)	<0.001

611

612 <sup>a</sup> The Pearson's Chi-square test was used to test differences in proportions for medication adherence by sex (male vs. female) and urbanicity (rural vs. urban) of  
 613 residence.

614 <sup>b</sup> Adherence to antihypertensives if the average medication possession ratio (MPR) of the 7 Therapeutic Classes was greater than equal to 80%; otherwise,  
 615 medication non-adherence.

616 **Appendix Table 8. Association of individuals' demographics and comorbidities with medication adherence (Adjusted)<sup>a</sup>**

Models	OLS	Logit	Probit
Dependent variable	Medication adherence <sup>b</sup>	Medication adherence	Medication adherence
Sex			
Male (reference)			
<b>Female</b>	<b>-0.0583***</b>	<b>-0.0583***</b>	<b>-0.0583***</b>
	<b>(-0.0616 - - 0.0550)</b>	<b>(-0.0616 - - 0.0550)</b>	<b>(-0.0616 - - 0.0550)</b>
Urbanicity of residence			
Rural (reference)			
<b>Urban</b>	<b>-0.0138***</b>	<b>-0.0138***</b>	<b>-0.0138***</b>
	<b>(-0.0189 - - 0.00856)</b>	<b>(-0.0189 - - 0.00857)</b>	<b>(-0.0190 - - 0.00858)</b>
Age groups			
Aged 18-34 (reference)			
Aged 35-44	0.112***	0.116***	0.115***
	(0.104 - 0.120)	(0.107 - 0.124)	(0.107 - 0.123)
Aged 45-54	0.219***	0.220***	0.220***
	(0.212 - 0.227)	(0.212 - 0.227)	(0.212 - 0.227)
Aged 55-64	0.305***	0.305***	0.305***
	(0.298 - 0.313)	(0.297 - 0.313)	(0.298 - 0.313)
Regions			
Northeast (Reference)			
Midwest	-0.0154***	-0.0155***	-0.0155***
	(-0.0206 - - 0.0102)	(-0.0208 - - 0.0103)	(-0.0207 - - 0.0103)
South	-0.0584***	-0.0585***	-0.0585***
	(-0.0632 - - 0.0537)	(-0.0632 - - 0.0537)	(-0.0632 - - 0.0537)
West	-0.0310***	-0.0312***	-0.0312***
	(-0.0370 - - )	(-0.0372 - - )	(-0.0373 - - )

	0.0249)	0.0251)	0.0252)
Comorbidities			
Myocardial infarction	-0.0619***	-0.0615***	-0.0616***
	(-0.0738 - - 0.0500)	(-0.0733 - - 0.0497)	(-0.0734 - - 0.0497)
Congestive heart failure	-0.0802***	-0.0799***	-0.0799***
	(-0.0919 - - 0.0686)	(-0.0915 - - 0.0682)	(-0.0916 - - 0.0683)
Peripheral vascular disease	-0.00574	-0.00566	-0.00571
	(-0.0191 - 0.00765)	(-0.0191 - 0.00775)	(-0.0191 - 0.00768)
Cerebrovascular disease	-0.0969***	-0.0973***	-0.0967***
	(-0.121 - - 0.0727)	(-0.122 - - 0.0729)	(-0.121 - - 0.0725)
Dementia	-0.171*	-0.170*	-0.172*
	(-0.308 - - 0.0339)	(-0.310 - - 0.0312)	(-0.310 - - 0.0325)
Chronic pulmonary disease	-0.0393***	-0.0391***	-0.0392***
	(-0.0470 - - 0.0315)	(-0.0468 - - 0.0314)	(-0.0469 - - 0.0315)
Rheumatic disease	0.00177	0.00167	0.00164
	(-0.0135 - 0.0171)	(-0.0136 - 0.0170)	(-0.0137 - 0.0169)
Peptic ulcer disease	-0.0762***	-0.0759***	-0.0759***
	(-0.112 - - 0.0404)	(-0.112 - - 0.0400)	(-0.112 - - 0.0400)
Mild liver disease	-0.0360***	-0.0358***	-0.0360***
	(-0.0487 - - 0.0234)	(-0.0485 - - 0.0232)	(-0.0486 - - 0.0233)
Diabetes without chronic complication	0.0422***	0.0424***	0.0424***
	(0.0380 - 0.0464)	(0.0382 - 0.0467)	(0.0381 - 0.0467)
Diabetes with chronic complication	-0.0110*	-0.0110*	-0.0110*

	(-0.0195 - - 0.00240)	(-0.0196 - - 0.00239)	(-0.0196 - - 0.00241)
Hemiplegia or paraplegia	-0.162***	-0.167***	-0.166***
	(-0.198 - -0.126)	(-0.205 - -0.130)	(-0.203 - -0.129)
Renal disease	-0.0148**	-0.0149**	-0.0149**
	(-0.0249 - - 0.00467)	(-0.0250 - - 0.00480)	(-0.0250 - - 0.00480)
Any malignancy	0.0161**	0.0163**	0.0161**
	(0.00591 - 0.0263)	(0.00604 - 0.0265)	(0.00589 - 0.0263)
Moderate or severe liver disease	-0.128***	-0.129***	-0.130***
	(-0.174 - - 0.0824)	(-0.176 - - 0.0828)	(-0.176 - - 0.0835)
Metastatic solid tumor	-0.0949***	-0.0941***	-0.0940***
	(-0.122 - - 0.0674)	(-0.122 - - 0.0667)	(-0.121 - - 0.0667)
HIV/AIDS	0.0219	0.0219	0.0219
	(-0.00516 - 0.0490)	(-0.00524 - 0.0491)	(-0.00530 - 0.0492)
Observations	379,503	379,503	379,503

617

618 <sup>a</sup> This table presents the association of individuals' demographics and comorbidities with medication adherence. We provided the average marginal effects with  
619 95% confidence intervals from linear regression, logit, and probit models.

620 <sup>b</sup> Adherence to antihypertensives if the average medication possession ratio (MPR) of the 7 Therapeutic Classes was greater than equal to 80%; otherwise,  
621 medication non-adherence.

622 \*\*\*  $P < 0.001$ , \*\*  $P < 0.01$ , \*  $P < 0.05$



623 **Appendix Table 9. Sensitivity analysis using propensity score based overlap-weighting: total medical costs (per individual)**  
 624 **associated with adherence to antihypertensives in 2019<sup>a</sup>**

	All	Women	Men	Urban	Rural
<b>Total Medical Costs, \$</b>					
Medication non-adherence	18,696	19,795	18,131	18,933	16,562
	(18,290 - 19,103)	(19,330 - 20,259)	(17,692 - 18,570)	(18,509 - 19,358)	(16,000 - 17,125)
Medication adherence	17,318	18,666	16,625	17,508	15,612
	(16,938 - 17,698)	(18,229 - 19,103)	(16,220 - 17,029)	(17,112 - 17,903)	(15,117 - 16,108)
Difference	-1,378***	-1,129***	-1,506***	-1,426***	-949.7**
	(-1,628 - - 1,128)	(-1,543 - - 714.5)	(-1,818 - - 1,194)	(-1,693 - - 1,158)	(-1,618 - - 281.8)
Observation	379,503	128,245	251,258	341,292	38,211

625 <sup>a</sup> We applied the overlap weighting method, calculating weights derived from logistic regression, with adherence to antihypertensives as the outcome. A  
 626 generalized linear model with a gamma distribution and log link was used. The average marginal effects with 95% confidence intervals (CI) were reported. All  
 627 models were adjusted for the patient's age, sex, urbanicity of residence, Census regions, and comorbidities. The differences and the 95% CI of the predicted and  
 628 average marginal effects by sex and urbanicity were calculated. All the outcomes are per individual.

629 **Appendix Table 10. Sensitivity analysis using propensity score based overlap-weighting model: health care utilization (per**  
 630 **1,000 individuals) associated with adherence to antihypertensives in 2019<sup>a</sup>**

	All	Women	Men	Urban	Rural
<b>Emergency Department Visits</b>					
Medication non-adherence	433	539	379	434	431
	(428 - 439)	(529 - 549)	(373 - 385)	(428 - 439)	(416 - 446)
Medication adherence	264	316	238	263	273
	(261 - 268)	(309 - 323)	(234 - 242)	(260 - 267)	(263 - 283)
Difference	-169***	-223***	-141***	-170***	-158***
	(-175 - -163)	(-234 - -211)	(-148 - -134)	(-177 - -164)	(-176 - -139)
Observation	379,503	128,245	251,258	341,292	38,211
<b>Inpatient Admissions</b>					
Medication non-adherence	190	160	206	195	147
	(182 - 199)	(153 - 167)	(195 - 216)	(186 - 204)	(137 - 156)
Medication adherence	108	97	114	110	88
	(103 - 113)	(92 - 102)	(108 - 120)	(105 - 116)	(82 - 94)
Difference	-82***	-63***	-92***	-85***	-59***
	(-87 - -77)	(-69 - -57)	(-99 - -85)	(-90 - -79)	(-69 - -49)
Observation	379,503	128,245	251,258	341,292	38,211

631 Abbreviations: ED, emergency department.

632 <sup>a</sup> We applied the overlap weighting method, calculating weights derived from logistic regression, with adherence to antihypertensives as the outcome. A negative  
 633 binomial regression was used. All models were adjusted for the patient's age, sex, urbanicity of residence, Census regions, and comorbidities. We reported the  
 634 average marginal effects with a 95% confidence interval. The differences and the 95% CI of the predicted and average marginal effects by sex and urbanicity  
 635 were calculated. All the outcomes are per 1,000 individuals.

636 **Appendix Table 11. Sensitivity analysis using propensity score based overlap-weighting model: productivity losses (per 1,000**  
 637 **individuals) associated with adherence to antihypertensives in 2019<sup>a</sup>**

	All	Women	Men	Urban	Rural
<b>Number of Sick Absences</b>					
Medication non-adherence	308	327	299	300	387
	(299 - 317)	(314 - 340)	(289 - 308)	(291 - 308)	(353 - 420)
Medication adherence	289	305	281	285	329
	(281 - 297)	(293 - 318)	(272 - 289)	(276 - 293)	(303 - 354)
Difference	-19***	-22**	-18***	-15***	-58**
	(-28 - -11)	(-38 - -6)	(-28 - -8)	(-23 - -7)	(-98 - -19)
Observation	54,608	13,346	41,262	49,125	5,483
<b>Number of STD</b>					
Medication non-adherence	4,530	4,335	4,631	4,563	4,237
	(4,431 - 4,629)	(4,212 - 4,457)	(4,509 - 4,752)	(4,459 - 4,666)	(3,975 - 4,499)
Medication adherence	4,087	3,944	4,160	4,098	3,985
	(3,994 - 4,180)	(3,823 - 4,066)	(4,048 - 4,273)	(4,002 - 4,195)	(3,741 - 4,228)
Difference	-443***	-390***	-470***	-464***	-252
	(-550 - -336)	(-0,542 - -0,239)	(-612 - -328)	(-577 - -351)	(-603 - 99)
Observation	328,073	111,160	216,913	295,104	32,969
<b>Number of LTD</b>					
Medication non-adherence	1,519	1,239	1,664	1,497	1,722
	(1,343 - 1,696)	(1,043 - 1,434)	(1,443 - 1,884)	(1,317 - 1,677)	(1,304 - 2,140)
Medication adherence	1,637	1,481	1,716	1,603	1,939
	(1,438 - 1,835)	(1,228 - 1,734)	(1,476 - 1,957)	(1,400 - 1,806)	(1,428 - 2,450)
Difference	117	243	53	106	217
	(-85 - 319)	(-38 - 523)	(-216 - 321)	(-107 - 319)	(-404 - 838)
Observation	323,445	110,894	212,551	290,853	32,592

638 Abbreviations: LTD, long-term disability; STD, short-term disability.

639 <sup>a</sup> We applied the overlap weighting method, calculating weights derived from logistic regression, with adherence to antihypertensives as the outcome variable.

640 An exponential hurdle model was used. All models were adjusted for the patient's age, sex, urbanicity of residence, Census regions, and comorbidities. We

641 reported the average marginal effects with a 95% confidence interval. The differences and the 95% CI of the predicted and average marginal effects by sex and

642 urbanicity were calculated. All the outcomes are per 1,000 individuals.

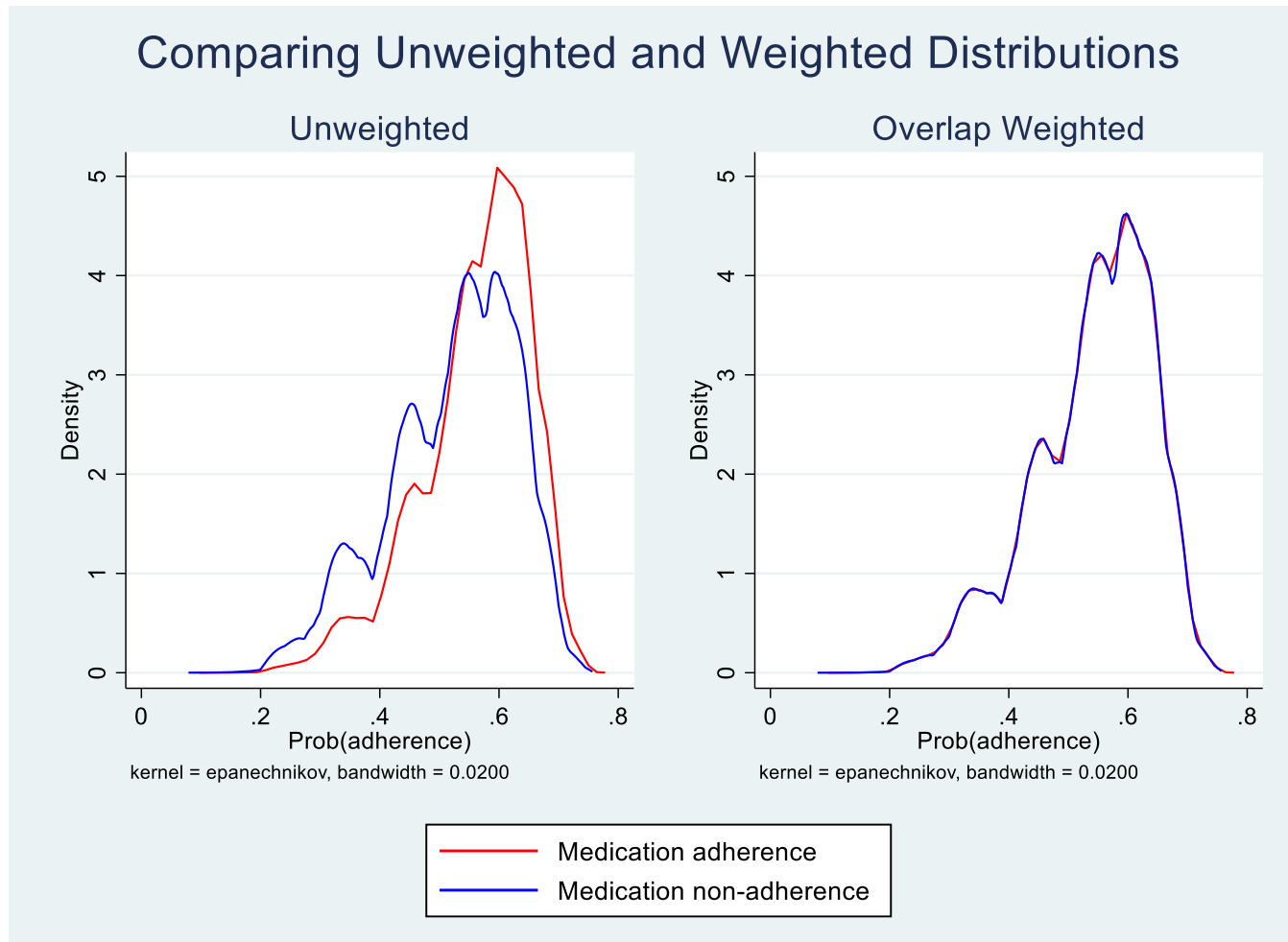
643 **Appendix Table 12. Sensitivity analysis using propensity score based overlap-weighting: productivity costs (per individual)**  
 644 **associated with adherence to antihypertensives in 2019.<sup>a</sup>**

	All	Women	Men	Urban	Rural
<b>Sick Absence Costs, \$</b>					
Medication non-adherence	84.58	73.52	90.22	83.12	97.64
	(80.50 - 88.65)	(67.55 - 79.48)	(85.21 - 95.24)	(79.04 - 87.19)	(81.85 - 113.4)
Medication adherence	70.97	59.67	76.74	69.70	82.35
	(67.78 - 74.16)	(55.23 - 64.11)	(72.64 - 80.83)	(66.49 - 72.90)	(70.21 - 94.50)
Difference	-13.61***	-13.85***	-13.49***	-13.42***	-15.28
	(-18.35 - -8.871)	(-21.14 - -6.557)	(-19.57 - -7.408)	(-18.21 - -8.630)	(-35.00 - 4.433)
Observation	54,608	13,346	41,262	49,125	5,483
<b>STD Costs, \$</b>					
Medication non-adherence	839.3	940.9	787.4	848.6	755.7
	(819.9 - 858.6)	(909.1 - 972.8)	(763.4 - 811.4)	(828.2 - 869.1)	(695.9 - 815.4)
Medication adherence	547.5	619.4	510.8	543.8	580.8
	(533.6 - 561.4)	(595.1 - 643.7)	(494.0 - 527.6)	(529.2 - 558.4)	(536.0 - 625.6)
Difference	-291.8***	-321.5***	-276.6***	-304.8***	-174.8***
	(-315.4 - -268.1)	(-361.4 - -281.6)	(-305.8 - -247.4)	(-329.7 - -279.9)	(-249.5 - -100.1)
Observation	328,073	111,160	216,913	295,104	32,969
<b>LTD Costs, \$</b>					
Medication non-adherence	195.6	238.3	173.8	199.8	157.4
	(173.8 - 217.4)	(193.9 - 282.6)	(150.1 - 197.4)	(176.2 - 223.5)	(117.1 - 197.6)
Medication adherence	126.2	142.0	118.1	122.8	156.3
	(113.4 - 139.0)	(121.1 - 163.0)	(101.8 - 134.4)	(109.2 - 136.4)	(117.2 - 195.4)
Difference	-69.39***	-96.22***	-55.69***	-77.04***	-1.056
	(-94.27 - -44.51)	(-145.2 - -47.28)	(-83.98 - -27.40)	(-103.9 - -50.18)	(-57.10 - 54.98)
Observation	323,445	110,894	212,551	290,853	32,592

645 <sup>a</sup> We applied the overlap weighting method, calculating weights derived from logistic regression, with adherence to antihypertensives as the outcome variable. A  
 646 two-part model was used. The first part was a logit model, and the second part was a generalized linear model with a gamma distribution and log link. The  
 647 average marginal effects with a 95% confidence interval were reported. All models were adjusted for the patient's age, sex, urbanicity of residence, Census  
 648 regions, and comorbidities. The differences and the 95% CI of the predicted and average marginal effects by sex and urbanicity were calculated. Productivity  
 649 costs were calculated by multiplying the number of hours absences, obtained from the number of days absences times 8 hours, and absences related to STD and  
 650 LTD by the average hourly wage. Adjustments for absences associated with short-term (70% of hourly wage) and long-term disability (60% of hourly wage)  
 651 were made. All the outcomes are per individual.

652

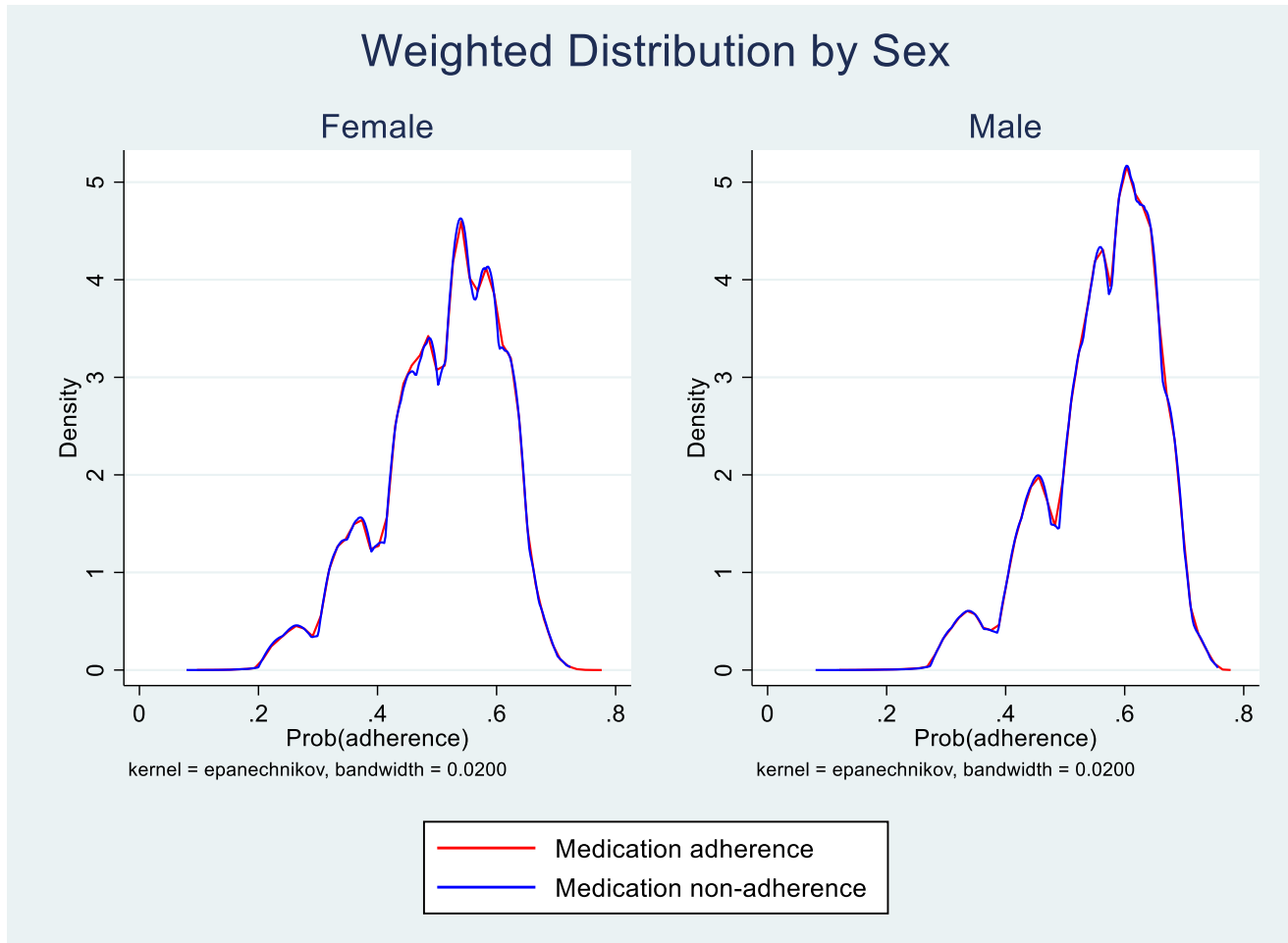
653 **Appendix Figure1: Difference in distribution of probability of adherence estimated from logistic regression in unweighted**  
654 **(original) and overlap-weighted samples<sup>a</sup>**



655

656 <sup>a</sup>This figure shows the difference in probability distribution for unweighted and weighted samples among individuals with and without medication adherence.  
657 The distributions for overlap-weighted samples of the population with and without medication adherence suggest the validity of the overlap-weighting model for  
658 adjusting for measured confounders.

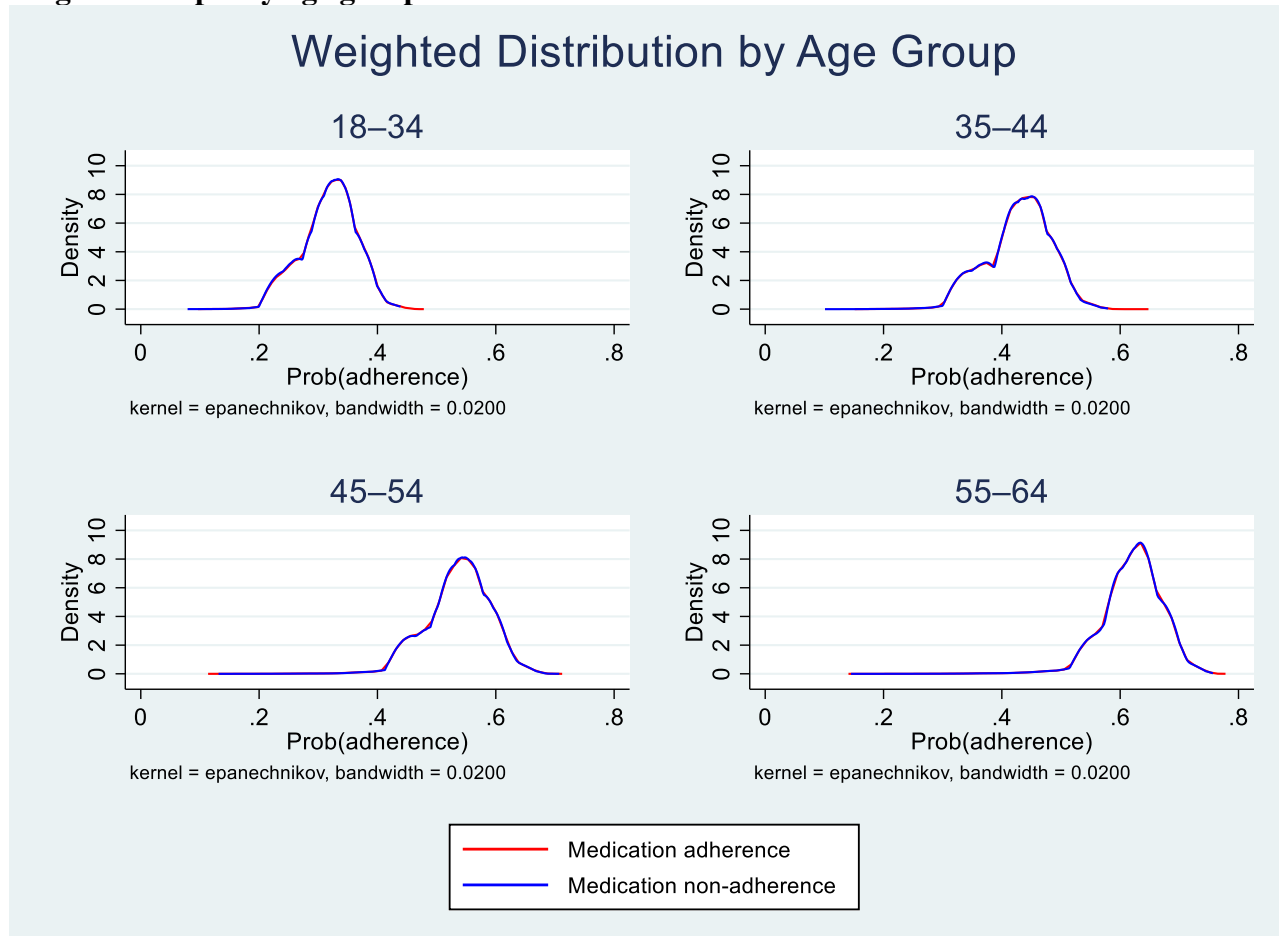
659 **Appendix Figure 2: Difference in distribution of probability of adherence estimated from logistic regression in the overlap-**  
660 **weighted sample by sex<sup>a</sup>**



661

662 <sup>a</sup>This figure shows the difference in probability distribution for overlap-weighted samples by sex among individuals with and without medication adherence. The  
663 distributions for overlap-weighted samples of the population with and without medication adherence suggest the validity of the overlap-weighting model for  
664 adjusting for measured confounders.

665 **Appendix Figure 3: Difference in distribution of probability of adherence estimated from logistic regression in the overlap-**  
666 **weighted sample by age group<sup>a</sup>**

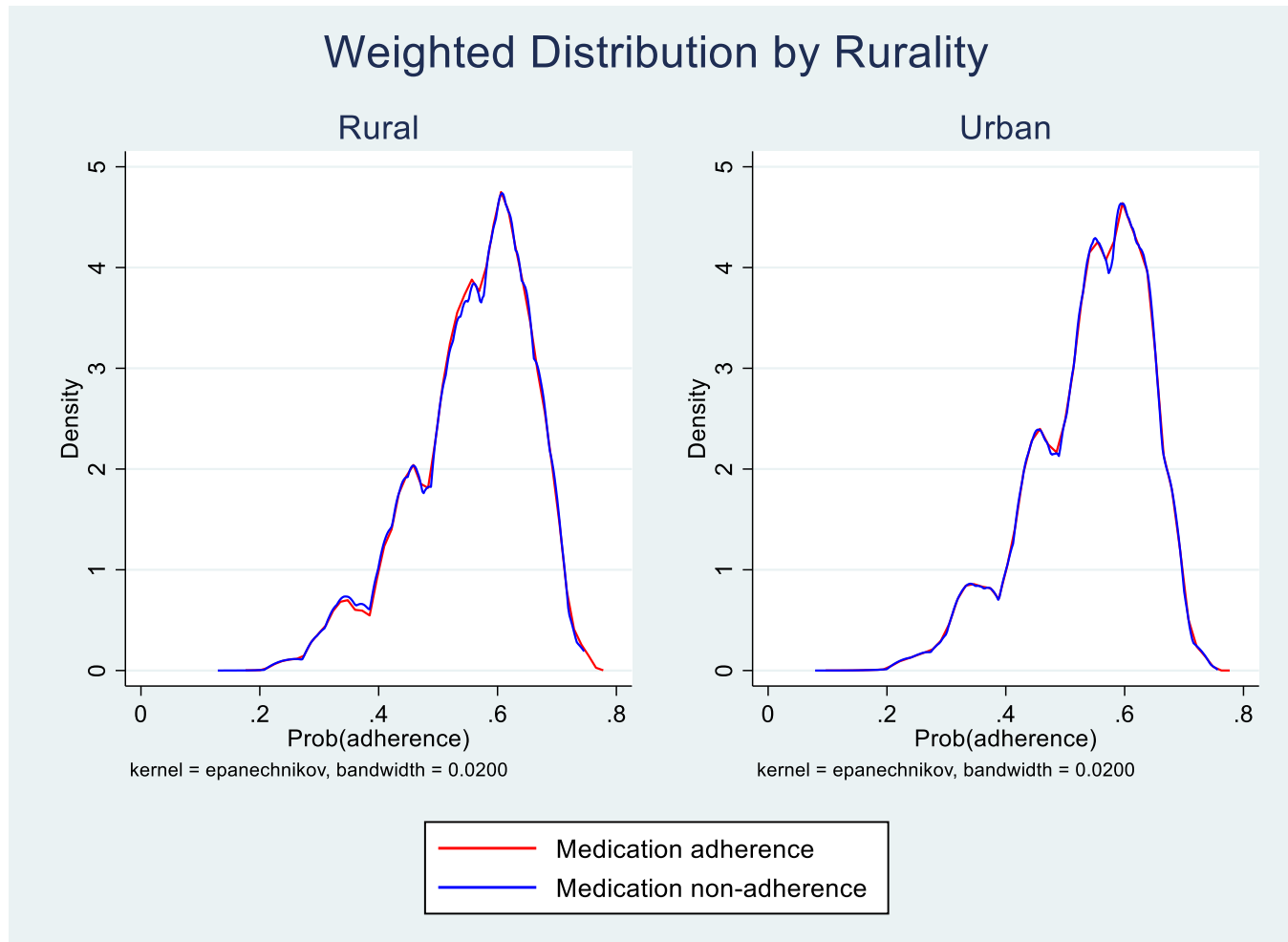


667

668 <sup>a</sup>This figure shows the difference in probability distribution for overlap-weighted samples by age group among individuals with and without medication  
669 adherence. The distributions for overlap-weighted samples of the population with and without medication adherence suggest the validity of the overlap-weighting  
670 model for adjusting for measured confounders.

671

672 **Appendix Figure 4: Difference in distribution of probability of adherence estimated from logistic regression in e-weighted**  
673 **sample by rurality of residence<sup>a</sup>**



674

675 <sup>a</sup>This figure shows the difference in probability distribution for overlap-weighted samples by rurality among those with and without medication adherence. The  
676 distributions for overlap-weighted samples of population with and without medication adherence suggest validity of overlap-weighting model to adjust for  
677 measured confounders.